

CUSTOMER TERMINAL	RoHS	LEAD(Pb)-FREE
Sn96%, Ag4%	Yes	Yes



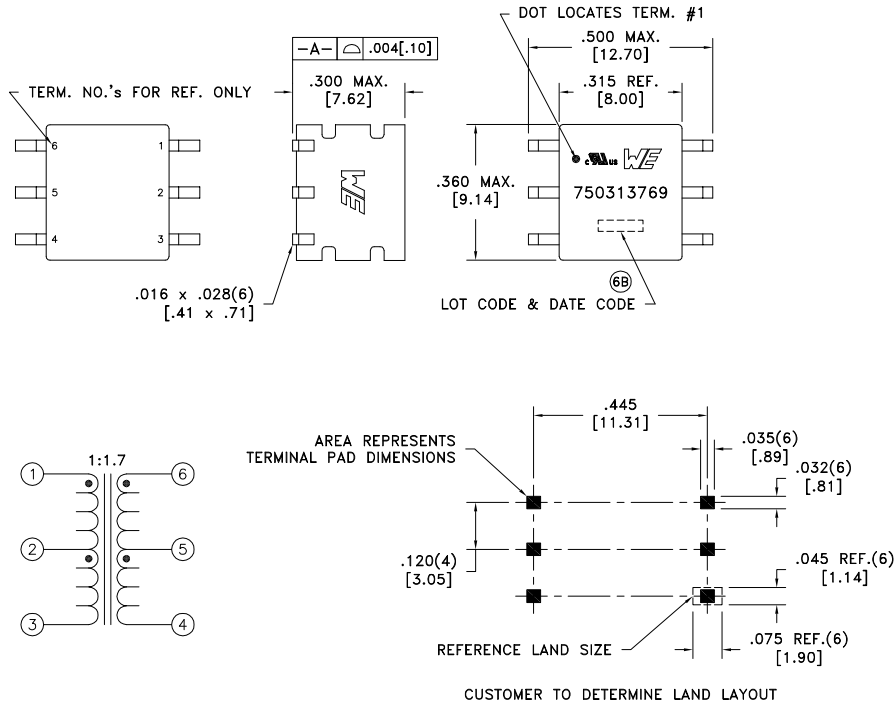
ELECTRICAL SPECIFICATIONS @ 25°C unless otherwise noted:

PARAMETER	TEST CONDITIONS	VALUE
D.C. RESISTANCE	1-3 @20°C	0.426 ohms max.
D.C. RESISTANCE	6-4 @20°C	0.481 ohms max.
INDUCTANCE	1-3 100kHz, 10mVAC, Ls	340uH min.
DIELECTRIC	1-6 6250Vrms, 1 second	5000Vrms, 1 minute
URNS RATIO	(6-4):(1-3)	1.7:1, ±2%

GENERAL SPECIFICATIONS:

OPERATING TEMPERATURE RANGE: -40°C to +125°C including temp rise.

- 6E CURRENT RATING: 350mAAC
- VOLTAGE-TIME: 11VuS
- 6C Complies with the following requirements as defined by IEC60601-1(ed); am1:
 - Providing two means of Patient Protection up to a working voltage of 250VAC.
- 6C 8mm minimum creepage & clearance distance between PRI & SEC.
- 6C Complies with the following requirements as defined by IEC60950-1, EN60950-1, UL60950-1/CSA-60950-1 and AS/NZS60950-1:
 - Reinforced insulation for a primary circuit at a working voltage of 250VAC, Overvoltage Category II, Pollution Degree 2, up to 2km above sea level.
- 6C Designed to comply with the following requirements as defined by IEC60664-1:
 - Reinforced insulation for a primary circuit at a working voltage of 400VAC up to 2km above sea level.
- COPLANARITY: All 6 terminals must lie on a plane within .004 [.10] of Surface A after lead tinning.
- 6D Qualified to AEC-Q200.



Wire insulation & RoHS status not affected by wire color.
Wire insulation color may vary depending on availability.

6B

AGENCY NUMBER	
UL60950-1	E205930
UL60601-1	E358628

REV.	DATE	Packaging Specifications	CONVENTION PLACEMENT
6E	6/18	Method: Tape & Reel	
6D	4/16	PKG-0948	
6C	3/15	www.we-online.com/midcom	
6B	1/15	SEE REVISION SHEET FOR REVISION LEVEL	

Tolerances unless otherwise specified:
 Angles: ±1° Decimals: ±.005 [.13]
 Fractions: ±1/64 Footprint: ±.005 [.13]

This drawing is dual dimensioned. Dimensions in brackets are in millimeters.

DRAWING TITLE
TRANSFORMER

eiSos p/n: 750313769

PART NO.
750313769

SPECIFICATION SHEET 1 OF 1

Mouser Electronics

Authorized Distributor

Click to View Pricing, Inventory, Delivery & Lifecycle Information:

[Wurth Electronics:](#)

[750313769](#)