

# Thermofit® Molded Parts Specification Control Drawing

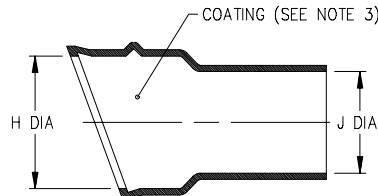
Part Number : 222F232-X-02

Description : Boot, 90°  
With Lip

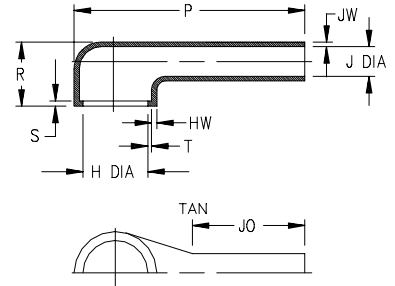
LIMITED DISTRIBUTION

## NOTES

1. All dimensions are in inches.
2. Dimensions appearing in table are as follows:  
a - As Supplied  
b - After Unrestricted Recovery
3. Coating is optional. As supplied dimensions appearing in table are for uncoated parts. When coating is added, entry diameters will be reduced by .06 max.
4. "S" & "T" dimensions apply to a minimum of 240° of the circumference.



AS SUPPLIED



AFTER UNRESTRICTED RECOVERY

TABLE OF DIMENSIONS

PART NUMBER	H		J		P	R	JO	HW	JW	S	T
	Min a	Max b	Min a	Max b	±10% b	±10% b	±10% b	+ .06 / - .03 b	± .03 b	+ .06 / - .03 b	± .03 b
222F232-X-02	1.22	.73	.96	.35	3.55	.82	2.29	.07	.06	.07	.05

**Raychem**

RAYCHEM CORPORATION  
300 CONSTITUTION DRIVE  
MENLO PARK, CALIFORNIA 94025  
(415) 361-6055

Revision : B

Date : 9/27/90

Part Number : 222F232-X-02

Description : Boot, 90°  
With Lip

CAD FILE MP90260

# Thermofit® Molded Parts Specification Control Drawing

LIMITED DISTRIBUTION

Part Number : 222F232-X-02

Description : Boot, 90°  
With Lip

COMPATABILITY CHART

MATERIAL DASH NO.	MATERIAL DESCRIPTION	RT SPEC	COATING SLASH NO.	COATING S NO.	COATING DESCRIPTION
-51	Flexible EPB	RT-1321	/164	S-1124	Adhesive

## ORDERING INFORMATION

Base part number 222F232 -51 -02 /XX

Material dash number                       
(See Compatibility Chart)

Modification number                       
(If necessary, see front of scd binder  
for a complete list)

Adhesive slash number                       
(If necessary, see Compatibility Chart)

THIS DRAWING IS SUBJECT TO CHANGE WITHOUT NOTICE; CONSULT YOUR  
NEAREST FIELD REPRESENTATIVE FOR CURRENT REVISION

If this document is printed it becomes uncontrolled.  
Check for the latest revision.

**Raychem**

RAYCHEM CORPORATION  
300 CONSTITUTION DRIVE  
MENLO PARK, CALIFORNIA 94025  
(415) 361-6055

Revision : B

Date : 9/27/90

Part Number : 222F232-X-02

Description : Boot, 90°  
With Lip

# Mouser Electronics

Authorized Distributor

Click to View Pricing, Inventory, Delivery & Lifecycle Information:

[TE Connectivity:](#)

[222F232-51-02/164-0](#)