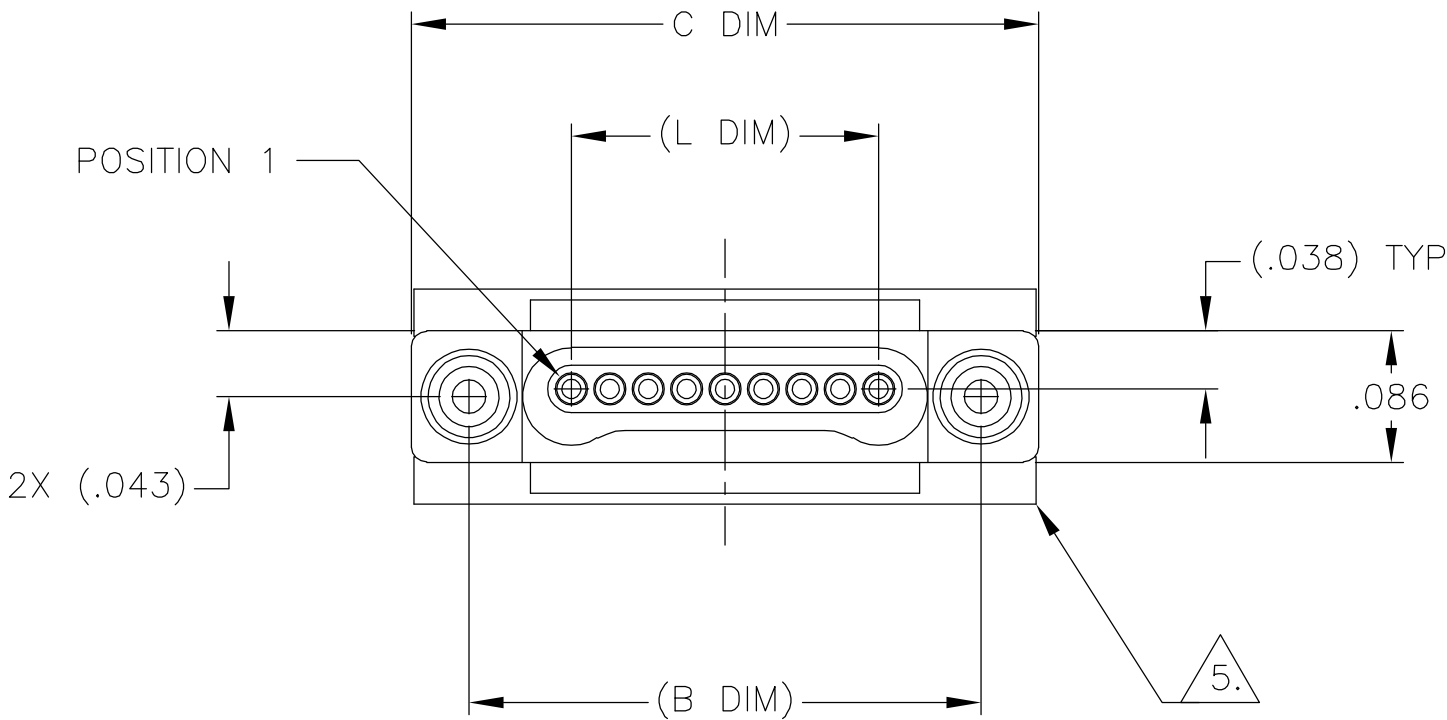
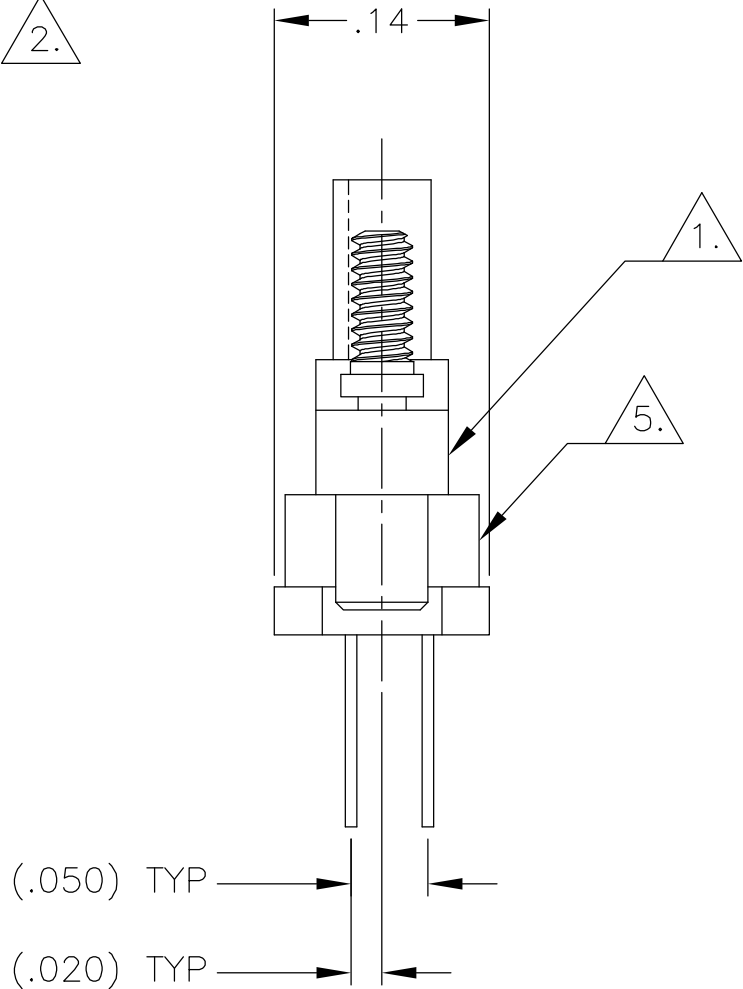
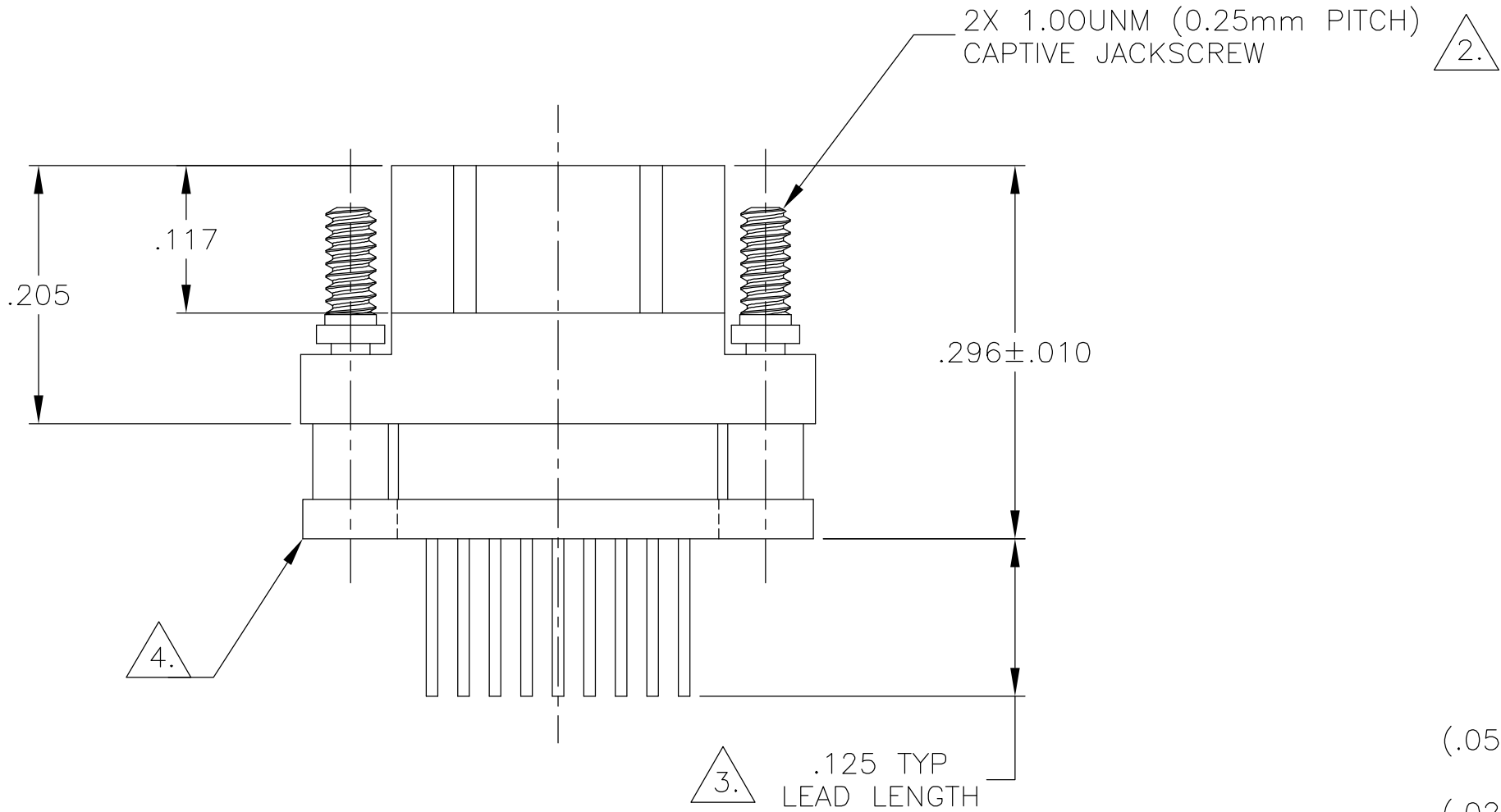


LOC	DIST	REVISIONS					
		P	LTR	DESCRIPTION	DATE	DWN	APVD
DF	D0		B	UPDATE PER 0H2Y-0322-04	27 OCT 04	CAS	MKS



SIZE	(B DIM)	C DIM ±.0050	(L DIM)
05	(.233)	.3085	(.100)
09	(.333)	.4085	(.200)
15	(.483)	.5585	(.350)
25	(.733)	.8085	(.600)
37	(1.033)	1.1085	(.900)
51	(1.383)	1.4585	(1.250)

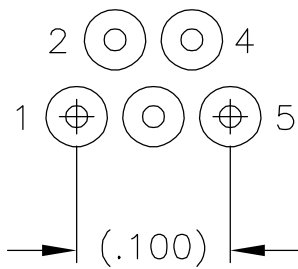


1. SHELL OPTIONS (TO BE SPECIFIED IN NANONICS PART NUMBER):
METAL: 6061-T6 ALUMINUM, ELECTROLESS NICKEL PLATED PER MIL-C-26074 (STANDARD) OR GOLD PLATED PER MIL-G-45204
303 STAINLESS STEEL, PASSIVATED PER SAE-AMS-QQ-P-35
INSULATOR MATERIAL FOR ALL METAL SHELLS IS LIQUID CRYSTAL POLYMER (LCP) PER MIL-M-24519 OR PER ASTM D5138
PLASTIC: LIQUID CRYSTAL POLYMER (LCP) PER MIL-M-24519 OR PER ASTM D5138
2. STANDARD 1.00UNM CAPTIVE JACKSCREWS ARE SHOWN FOR REFERENCE ONLY AND MUST BE SPECIFIED IN THE NANONICS PART NUMBER WHEN REQUIRED. JACKSCREW MATERIAL IS 303 STAINLESS STEEL, PASSIVATED PER SAE-AMS-QQ-P-35, AND DRY LUBED PER DOD-L-85645. RETAINING RING IS 17-4 STAINLESS STEEL, PASSIVATED PER SAE-AMS-QQ-P-35. JACKSCREWS HAVE A .9mm HEX SOCKET HEAD. 1.20UNM JACKSCREWS ALSO AVAILABLE.
3. LEAD MATERIAL: HH BRASS, TIN LEAD PLATED 60/40 COMPOSITION PER SAE-AMS-P-81728
4. INSULATOR BOARD MATERIAL: G10 OR EQUIVALENT
5. EPOXY ENCAPSULATION
6. NANONICS TERMINATION CODE: C51
7. THIS DRAWING PREVIOUSLY IDENTIFIED AS NANONICS N10138/128

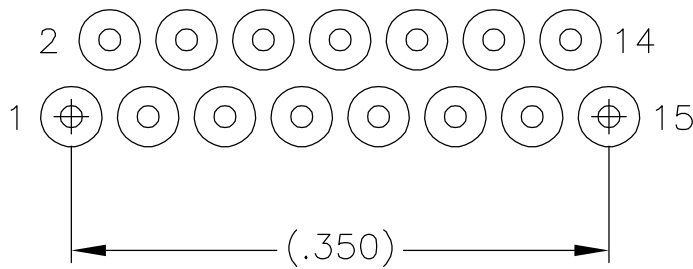
THIS DRAWING IS A CONTROLLED DOCUMENT.		DWN C SCHOLL	9 JUN 04	<div><div><div><div><div></div><div>tyco</div></div><div>Electronics</div></div><div>Tyco Electronics Corporation Harrisburg, PA 17105</div></div></div>						
		CHK M STORRY	9 JUN 04							
DIMENSIONS: INCHES		TOLERANCES UNLESS OTHERWISE SPECIFIED:		APVD —	NAME					
		0 PLC ± —		PRODUCT SPEC						
		1 PLC ± —		—						
		2 PLC ± .010		APPLICATION SPEC						
		3 PLC ± .005		—						
		4 PLC ± —		—						
MATERIAL		FINISH		WEIGHT —	SIZE A2	CAGE CODE 00779	DRAWING NO C=1589882	RESTRICTED TO —		
SEE NOTES		SEE NOTES		CUSTOMER DRAWING				SCALE 8:1	SHEET 1 OF 2	REV B

LOC	DIST	REVISIONS				
		P	LTR	DESCRIPTION	DATE	DWN
DF	D0		—	SEE SHEET 1	—	—

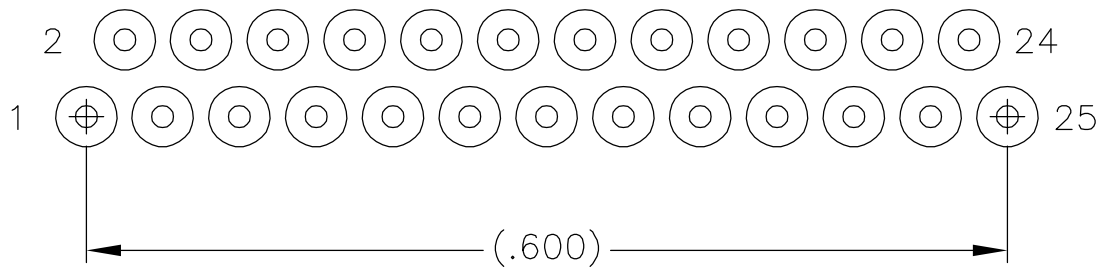
D



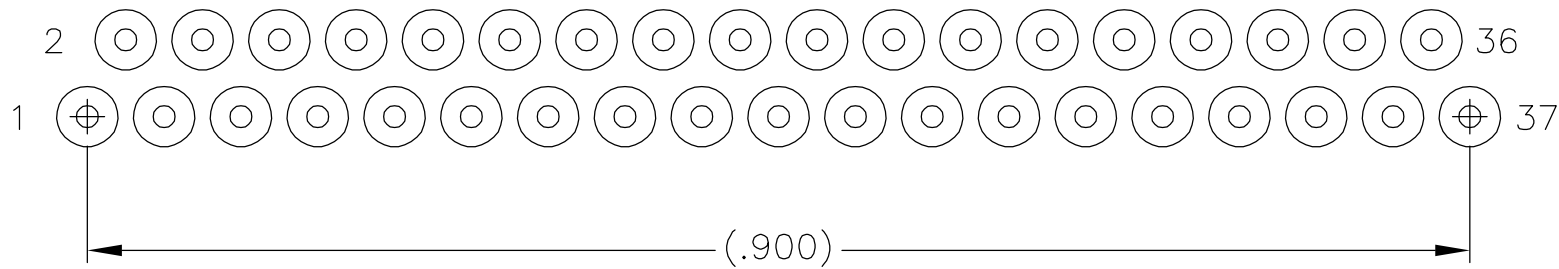
5 POSITION



15 POSITION

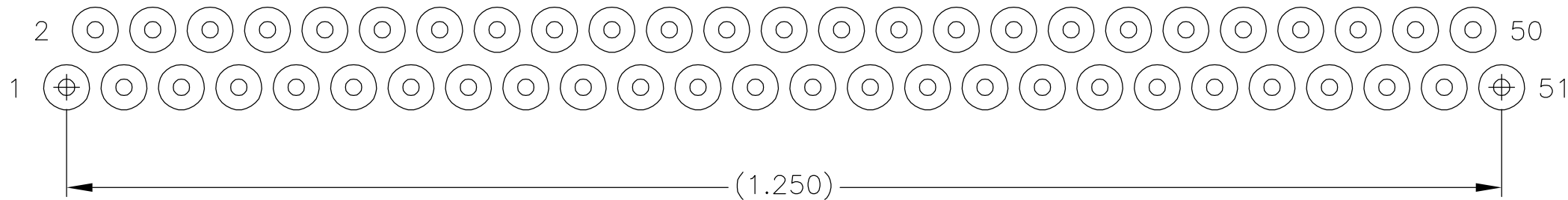


25 POSITION



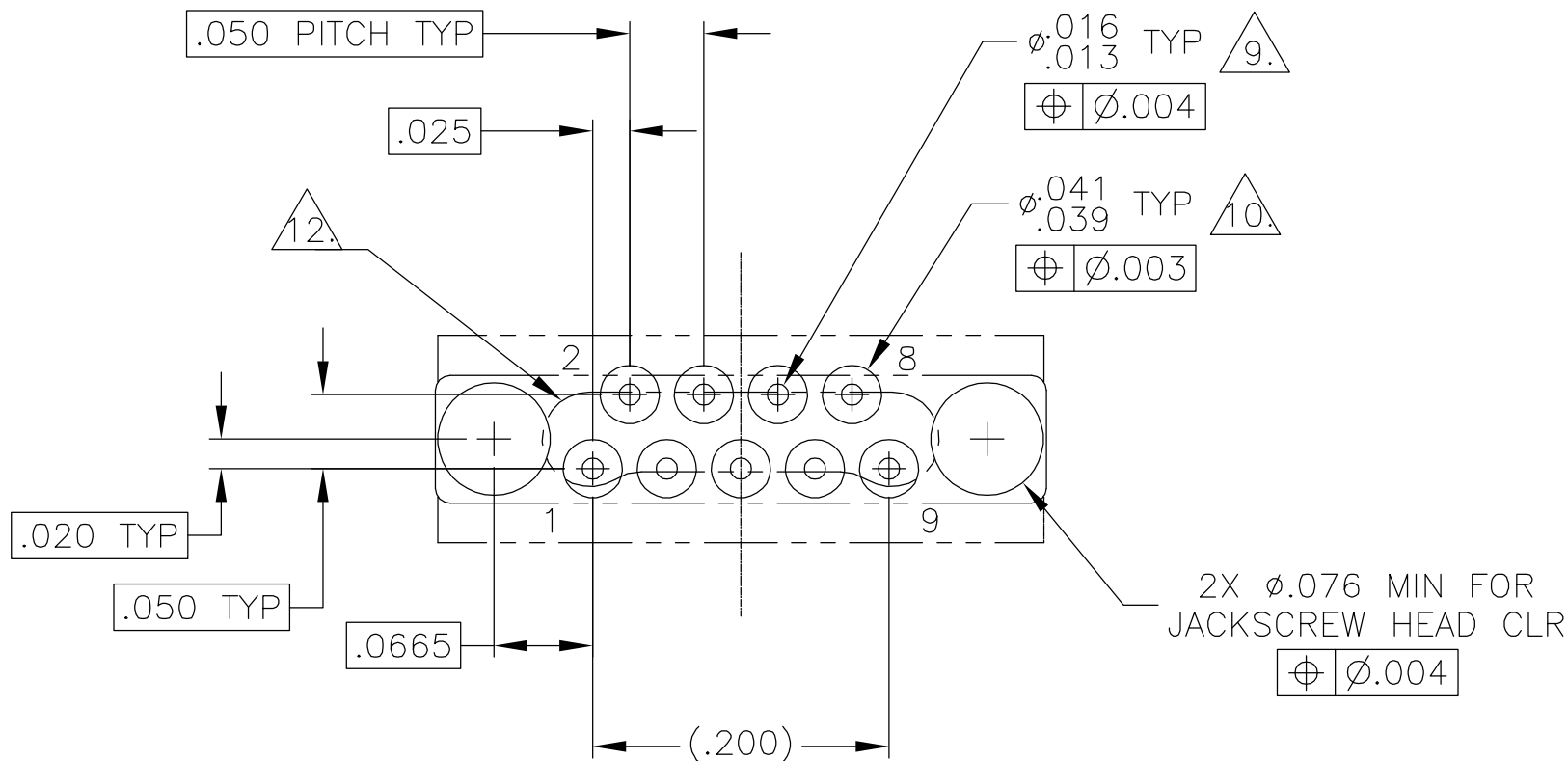
37 POSITION

C

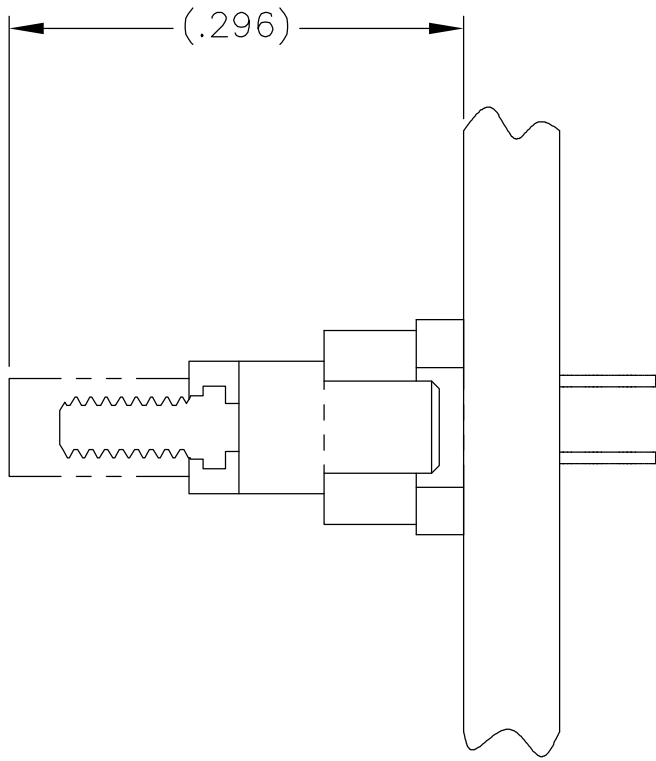


51 POSITION

B



TYPICAL PCB LAYOUT
SIZE 09 SHOWN FOR REFERENCE



A

8.

POSITIONAL TOLERANCES FOR BASIC DIMENSIONED FEATURES ARE RELATIVE TO FIDUCIALS OR SOME SIMILAR DATUM REFERENCES DEFINED BY PCB DESIGNER.
9.

PLATED THROUGH HOLES
10.

SOLDER PADS
11.

ALL THROUGH HOLE LAYOUTS ARE AS VIEWED FROM TOP OF PCB.
12.

CONNECTOR ORIENTATION

THIS DRAWING IS A CONTROLLED DOCUMENT.		DWN C SCHOLL 9 JUN 04	tyco Electronics Tyco Electronics Corporation Harrisburg, PA 17105			
		CHK M STORRY 9 JUN 04				
DIMENSIONS: INCHES	TOLERANCES UNLESS OTHERWISE SPECIFIED:	APVD —	NAME PLUG ASSEMBLY, VERTICAL MOUNT, THROUGH HOLE, 1 TO 2 ROW, .050 SPACING, .125 LEAD LENGTH, PLASTIC OR METAL			
	0 PLC ± —	PRODUCT SPEC —				
	1 PLC ± —	APPLICATION SPEC —				
	2 PLC ± .010					
	3 PLC ± .005	—	SIZE A2	CAGE CODE 00779	DRAWING NO C=1589882	RESTRICTED TO —
	4 PLC ± —					
MATERIAL SEE NOTES	FINISH SEE NOTES	WEIGHT —				
		CUSTOMER DRAWING	SCALE 8:1	SHEET 2	OF 2	REV B

B

A

Mouser Electronics

Authorized Distributor

Click to View Pricing, Inventory, Delivery & Lifecycle Information:

[TE Connectivity:](#)

[1589882-2](#)