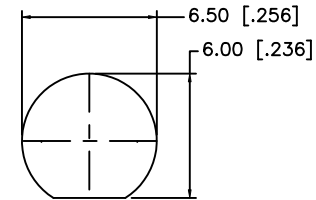
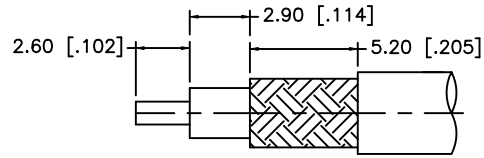


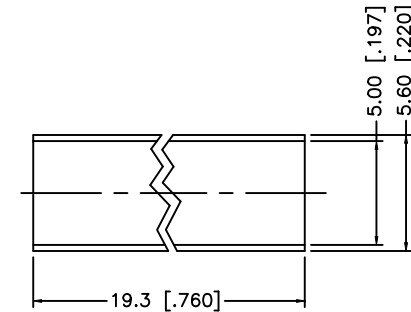
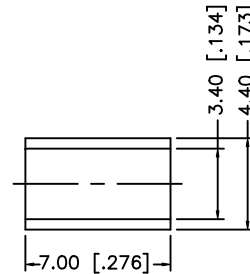
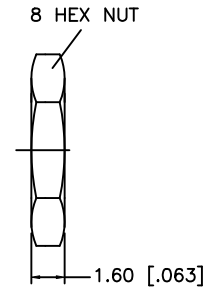
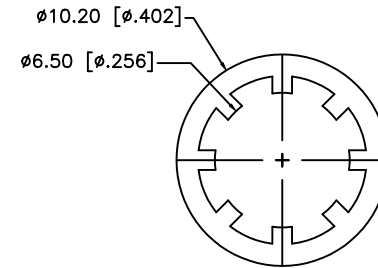
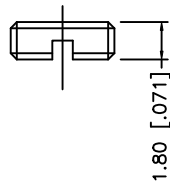
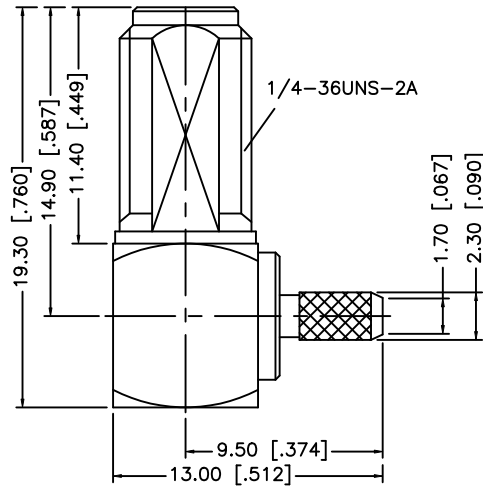
REV.	DATE	DESCRIPTION
NC	04/29/99	INITIAL RELEASE
A	04/02/08	UPDATE DRAWING FORMAT



RECOMMENDED
MOUNTING HOLE



RECOMMENDED CABLE
STRIPPING DIM'S



NOTE:

1. CRIMPED FERRULE HEX CRIMP SIZE .151"
2. CONTACT PIN TO SOLDER
3. MAX. PANEL THICKNESS = 3.2mm

					<div>UNLESS OTHERWISE SPECIFIED DIMENSIONS ARE IN MILLIMETERS. DIMENSIONS IN [] ARE IN INCHES AND FOR CUSTOMER REFERENCE ONLY.</div> <div>UNLESS OTHERWISE SPECIFIED TOLERANCES FOR MILLIMETERS ARE: 0.5 – 8mm ± 0.20mm 8 – 30mm ± 0.40mm 30 – 120mm ± 0.50mm</div> <div>UNLESS OTHERWISE SPECIFIED TOLERANCES FOR INCHES ARE: .020 – .315 = ± 0.007” .315 – 1.180 = ± 0.015” 1.180 – 4.724 = ± 0.020”</div> <div>DO NOT SCALE DRAWING</div>	APPROVALS		DATE		<div>Amphenol Connex</div>									
8						DRAWN	G.R.S.	04/02/08											
7	HEAT SHRINK TUBE			1		CHECKED													
6	FERRULE	COPPER	GOLD	1						PART DESCRIPTION									
5	HEX NUT	BRASS	GOLD	1						SMA R/A BULKHEAD JACK (FOR RG316 DOUBLE BRAID CABLE)									
4	LOCK WASHER	BRASS	GOLD	1															
3	CONTACT PIN	BER. COPPER	GOLD	1				1 OF 1		PART NO.									
2	INSULATOR	PTFE	NATURAL	1						132259									
1	BODY	BRASS	GOLD	1					CAD FILE		DWG. NO.		132259.DWG	REV.	A	SIZE	A	SCALE	NA
DESCRIPTION					MATERIAL	FINISH	QTY	C:/132/132259.DWG											

Mouser Electronics

Authorized Distributor

Click to View Pricing, Inventory, Delivery & Lifecycle Information:

[Amphenol:](#)

[132259](#)