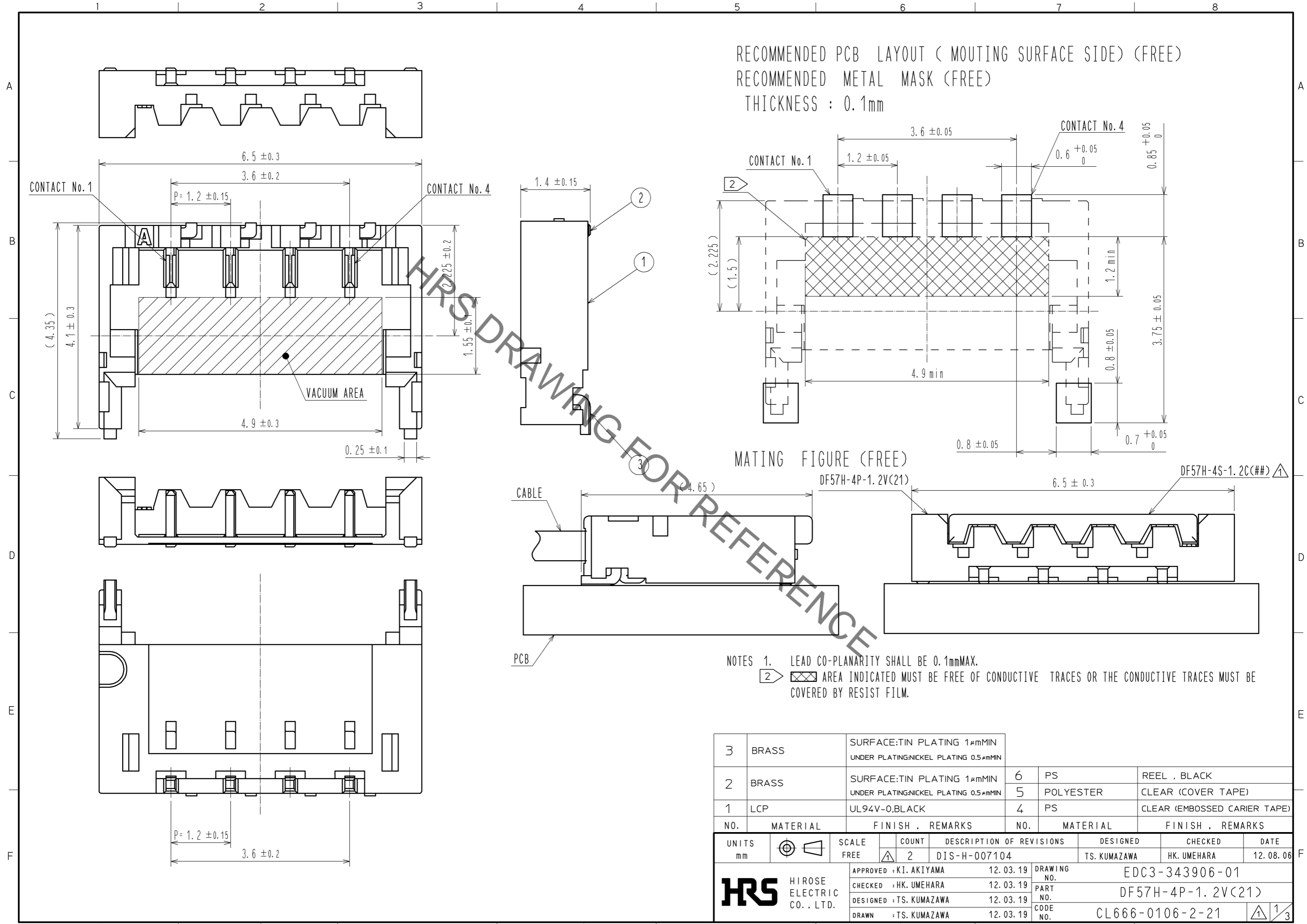


Sep.1.2020 Copyright 2020 HIROSE ELECTRIC CO., LTD. All Rights Reserved.  
In case of consideration for using Automotive equipment / device which demand high reliability, kindly contact our sales window correspondents.



RECOMMENDED PCB LAYOUT ( MOUNTING SURFACE SIDE ) (FREE)  
RECOMMENDED METAL MASK (FREE)  
THICKNESS : 0.1mm

MATING FIGURE (FREE)

- NOTES 1. LEAD CO-PLANARITY SHALL BE 0.1mmMAX.  
2. AREA INDICATED MUST BE FREE OF CONDUCTIVE TRACES OR THE CONDUCTIVE TRACES MUST BE COVERED BY RESIST FILM.

NO.	MATERIAL	FINISH . REMARKS	NO.	MATERIAL	FINISH . REMARKS
3	BRASS	SURFACE:TIN PLATING 1μmMIN UNDER PLATING:NICKEL PLATING 0.5μmMIN	6	PS	REEL , BLACK
2	BRASS	SURFACE:TIN PLATING 1μmMIN UNDER PLATING:NICKEL PLATING 0.5μmMIN	5	POLYESTER	CLEAR (COVER TAPE)
1	LCP	UL94V-0,BLACK	4	PS	CLEAR (EMBOSSD CARRIER TAPE)

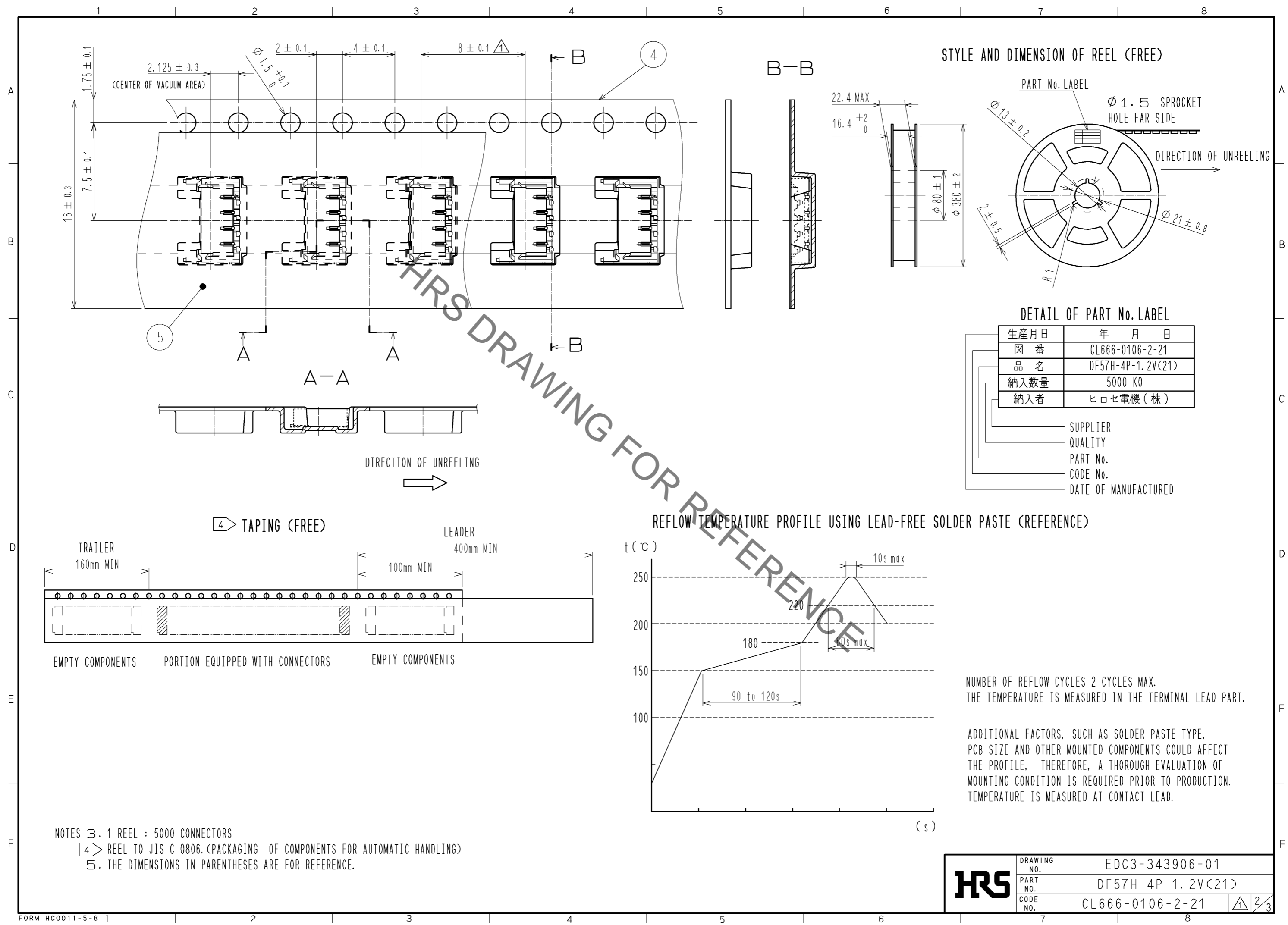
  

UNITS	SCALE	COUNT	DESCRIPTION OF REVISIONS	DESIGNED	CHECKED	DATE
mm	FREE	2	DIS-H-007104	TS. KUMAZAWA	HK. UMEHARA	12. 08. 06

APPROVED	DATE	DRAWING NO.
KI. AKIYAMA	12. 03. 19	EDC3-343906-01
CHECKED	DATE	PART NO.
HK. UMEHARA	12. 03. 19	DF57H-4P-1. 2V(21)
DESIGNED	DATE	CODE NO.
TS. KUMAZAWA	12. 03. 19	CL666-0106-2-21
DRAWN	DATE	
TS. KUMAZAWA	12. 03. 19	

Sep.1.2020 Copyright 2020 HIROSE ELECTRIC CO., LTD. All Rights Reserved.  
 In case of consideration for using Automotive equipment / device which demand high reliability, kindly contact our sales window correspondents.



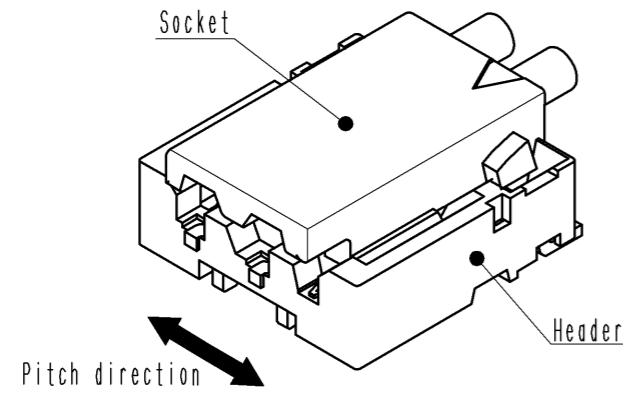
NOTES 3. 1 REEL : 5000 CONNECTORS  
 4 REEL TO JIS C 0806. (PACKAGING OF COMPONENTS FOR AUTOMATIC HANDLING)  
 5. THE DIMENSIONS IN PARENTHESES ARE FOR REFERENCE.

<b>HRS</b>	DRAWING NO.	EDC3-343906-01
	PART NO.	DF57H-4P-1.2V(21)
	CODE NO.	CL666-0106-2-21
		2/3

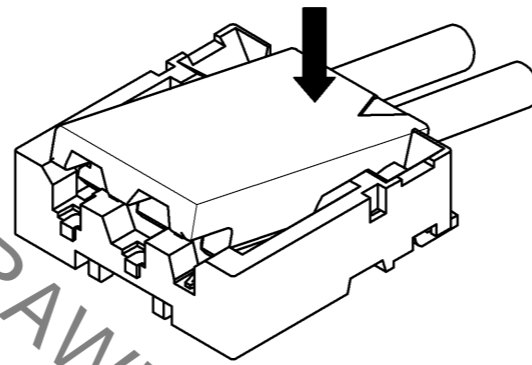
# DF57 Series Mating / Unmating Operation Instruction

## Mating

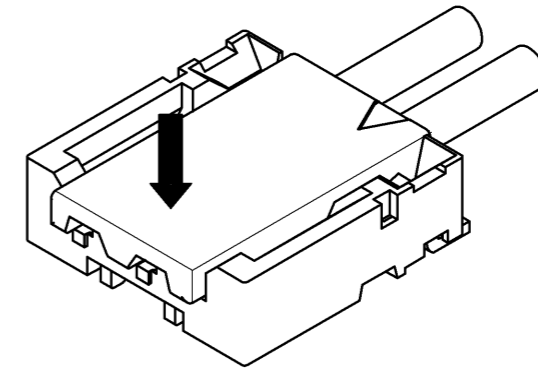
① By positioning the convexity of the socket sides to the header concavity, align the centers of the socket and the header in pitch direction.



② Slightly press the socket down at cable side to tilted angle.

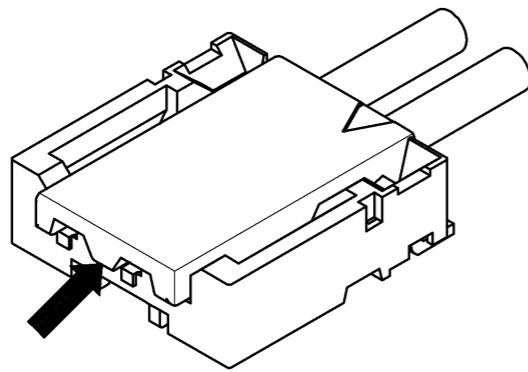


③ Press down at the lever side with stabilizing the cable side to insert. Mating completes.

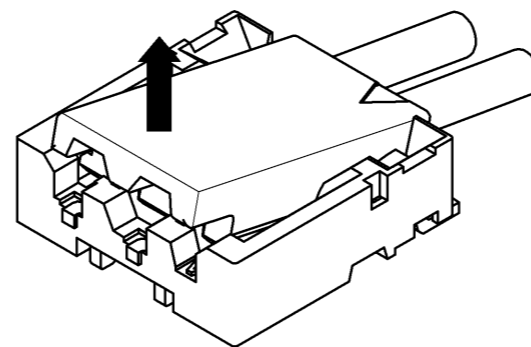


## Unmating

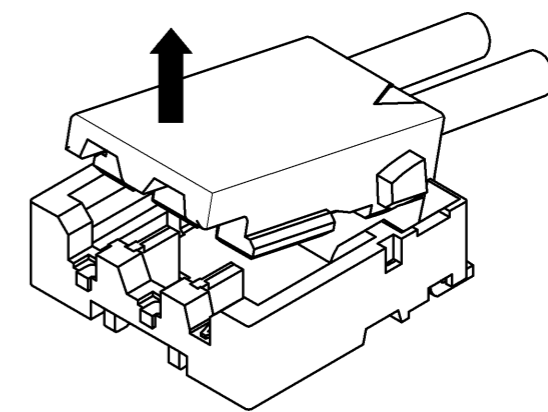
① Hook the lever with finger nail.



② Lift up to the upper direction and friction lock is released.



③ Lift up to the upper direction and positive lock is released. Removal completes.



HRS DRAWING FOR REFERENCE

<b>HRS</b>	DRAWING NO.	EDC3-343906-01
	PART NO.	DF57H-4P-1.2V<21>
	CODE NO.	CL666-0106-2-21
		3/3

Sep.1.2020 Copyright 2020 HIROSE ELECTRIC CO., LTD. All Rights Reserved. In case of consideration for using Automotive equipment / device which demand high reliability, kindly contact our sales window correspondents.