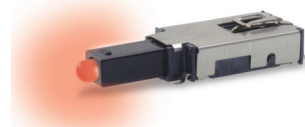




**LEAD FREE  
COMPATIBLE OPTION**

Patent Numbers  
6,974,924 B2 US  
EP1583118B1 Europe

- **Telecom network equipment**
- **Automotive electronics**
- **Consumer electronics**
- **Computer, server, modem, data storage**
- **Professional instrumentation, medical**



OPERATING TEMPERATURE: -40°C TO 80°C.  
STORAGE TEMPERATURE: -40°C TO 80°C.  
RELATIVE HUMIDITY: 90% R.H. @ 80°C.  
OPERATING LIFE: 30,000 Cycles.  
VIBRATION: Per EIA 186-E Method  
MECHANICAL SHOCK: Per EIA 186-E Method 12.  
OVERLOAD: Withstands 40 N for 1 minute without damage

SOLDERABILITY: According to Mil STD 202F Method 208D or EIA RS-186E Method 9.

LEAD FREE PROCESS COMPATIBLE: 260°C peak, 10 seconds Max. above 250° C.

WASHING PROCESS: No clean process compatible (SMT)  
Bottom wash compatible (Thru-hole)

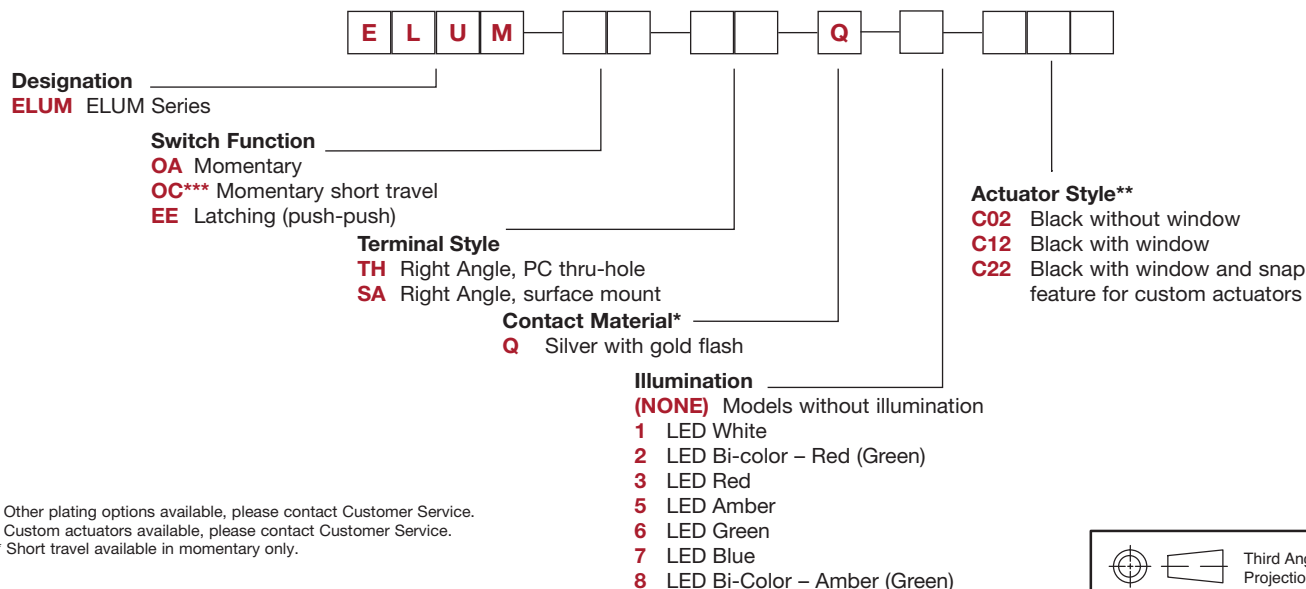
SHEAR TEST (SWITCH/PCB): > 40 N

“SA” Terminal Style SMT: Tape and reel per EIA 481-2 (450/reel)  
 “TH” Terminal Style PC: Tray (60/tray)

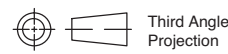
NOTE: Any models supplied with Q, contact material are RoHS compliant.

NOTE: Specifications and materials listed above are for switches with standard options. For information on specific and custom switches, please contact Customer Service.

To order, simply select desired option from each category and place in the appropriate box.



\* Other plating options available, please contact Customer Service.  
 \*\* Custom actuators available, please contact Customer Service.  
 \*\*\* Short travel available in momentary only.



Dimensions are shown: Inches (mm)  
Specifications and dimensions subject to change

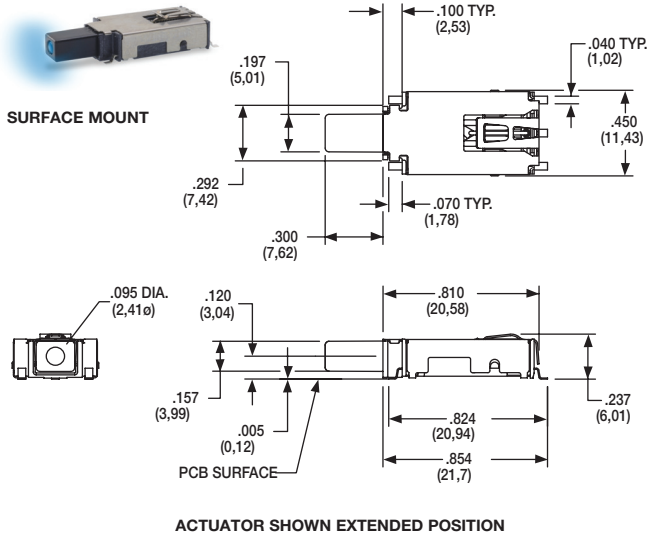
# ELUM™ Series Right Angle Illuminated Latching Pushbutton



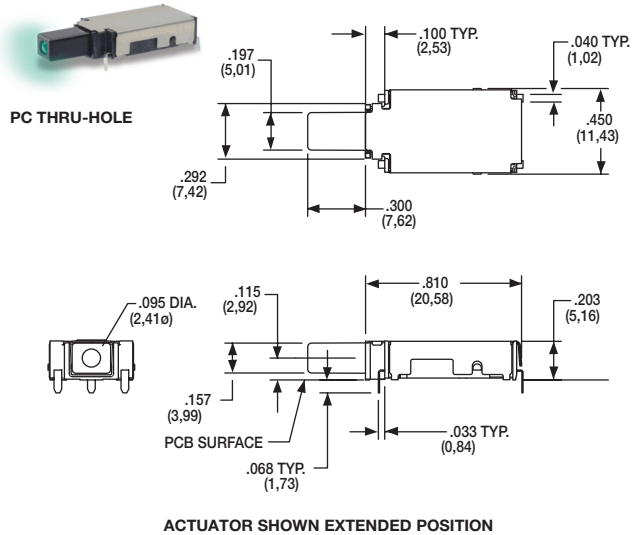
A  
Pushbutton

## STANDARD OPTIONS

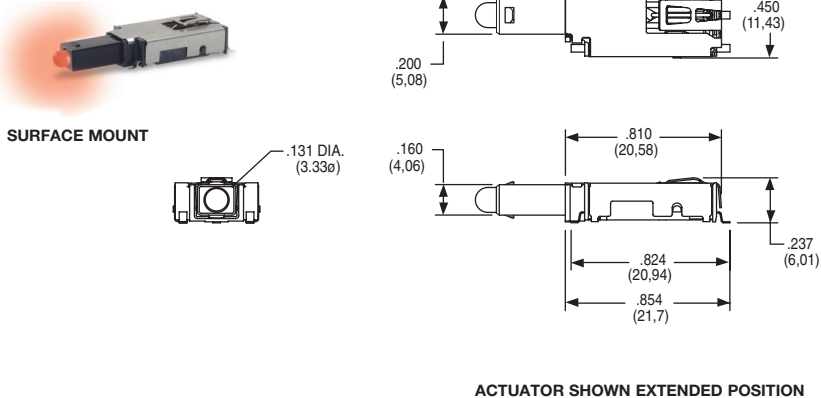
### ELUMEEAQA7C12



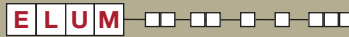
### ELUMOATHQ6C12



### ELUMEEAQA3C22



## DESIGNATION



**ELUM** ELUM SERIES, Illuminated Latching Pushbutton

## SWITCH FUNCTION

OPTION CODE	NO. OF POLES	POSITION 1		POSITION 2		SCHEMATIC
		SWITCH FUNCTION	CONNECTED TERMINALS	SWITCH FUNCTION	CONNECTED TERMINALS	
<b>OA / OC</b>	SP Momentary	ON	3 - 4	ON (Mom.)	3 - 2	<p>SPDT</p> <p>4 NC 3 C NO 2</p> <p>5 1</p> <p>+ Anode - Cathode</p>
<b>EE</b>	SP Latching (Push-Push)	ON	3 - 4	ON	3 - 2	

For SPST N.O. function, only terminals 3 & 2 are used.

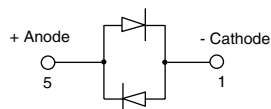
For SPST N.C. function, only terminals 3 & 4 are used.

Circuit: Make before break

LED pins 1 & 5 are independent of switch function.

NOTE:

For bi-color LED's the polarity must be reversed to alternate the color



Third Angle  
Projection

**C&K**

Dimensions are shown: Inches (mm)  
Specifications and dimensions subject to change



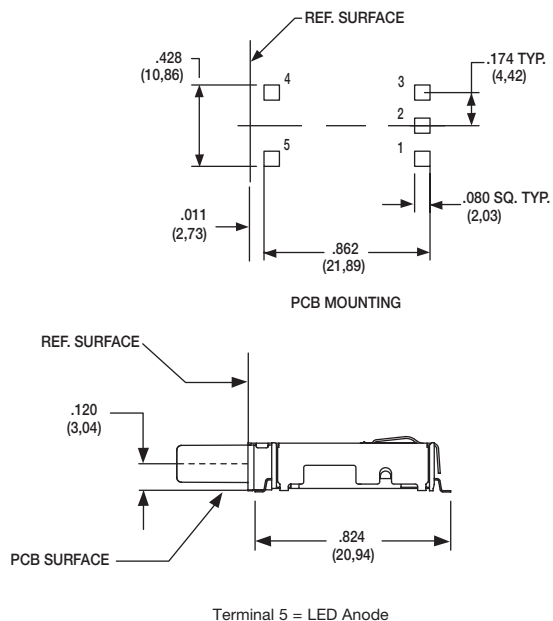
# ELUM™ Series Right Angle Illuminated Latching Pushbutton

## TERMINAL STYLE

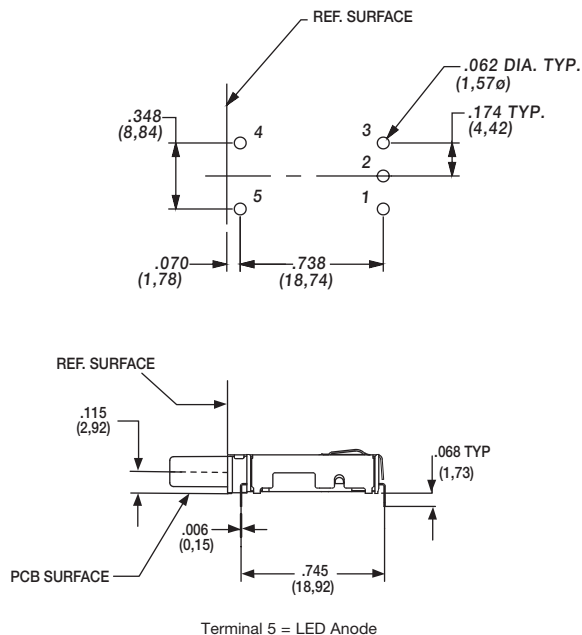
A

Pushbutton

### SA RIGHT ANGLE, SURFACE MOUNT



### TH RIGHT ANGLE, PC THRU-HOLE



## CONTACT MATERIAL

OPTION CODE	CONTACT MATERIAL	TERMINAL PLATING	RATINGS
Q	SILVER WITH GOLD FLASH	SILVER	250 mA

\* Note: See Technical Data section of this catalog for RoHS compliant and compatible definitions and specifications.

FIXED CONTACTS AND TERMINALS: Stainless steel, silver plated with gold flash

MOVABLE CONTACTS: Copper alloy, silver plated with gold flash

NOTE: Any models supplied with Q, contact material are RoHS compliant.

## ILLUMINATION

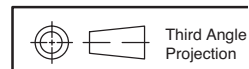
OPTION CODE	ILLUMINATION TYPE	TYPICAL INTENSITY* MIN MAX	PEAK WAVELENGTH	Vf Forward Voltage
		(mcd)	(nm)	
0	Model without illumination	N/A	N/A	
1	LED Super White	4,000 5,000	N/A	3.5
2	LED Bi-Color – Red (Green)	10 20	635/565	2.0
3	LED Red	4 8	700	2.0
5	LED Amber	35 50	610	2.0
6	LED Green	35 50	565	2.0
7	LED Super Blue	800 1,500	470	3.8
8	LED Bi-Color – Amber (Green)	10 10	585/565	2.0

\*LED FORWARD CURRENT: 20 mA

LED FORWARD VOLTAGE: see chart above

LED REVERSE VOLTAGE: 5.0 V MAX

\* For information on specific and custom LED, please contact Customer Service.



# ELUM™ Series Right Angle Illuminated Latching Pushbutton

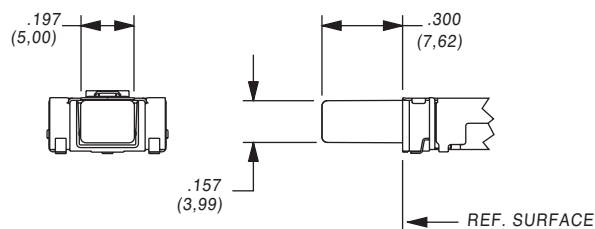


A

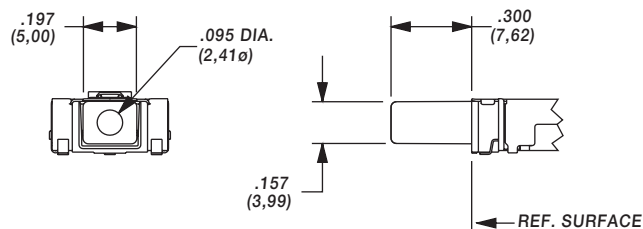
Pushbutton

## ACTUATOR STYLE\*

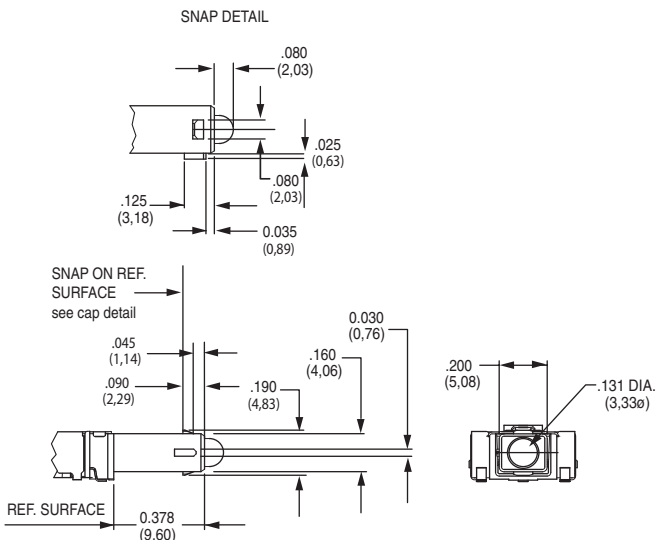
### C02 BLACK WITHOUT WINDOW



### C12 BLACK WITH WINDOW

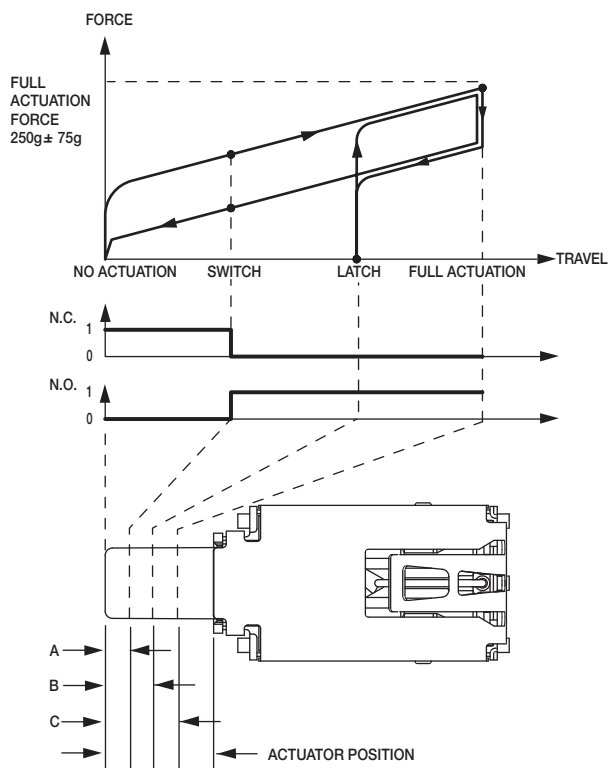


### C22 BLACK WITH WINDOW AND SNAP FEATURE TO ACCEPT CUSTOM CAP



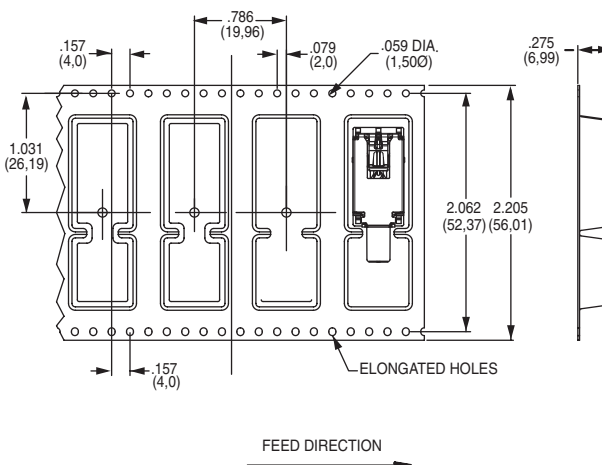
\* Custom actuators available, please contact Customer Service.

## FORCE TRAVEL DIAGRAM



OA, EE ACTUATOR POSITION			
A	SWITCH POINT	.067 ± .020	1,7 ± 0.5mm
B	LATCH	.131 ± .020	3,3 ± 0.5mm
C	FULL ACTUATION	.200 ± .020	5,1 ± 0.5mm
OC ACTUATOR POSITION			
A	SWITCH POINT	.067 ± .020	1,7 ± 0.5mm
C	FULL ACTUATION	.098 ± .020	2,5 ± 0.5mm

## TAPE & REEL



Dimensions are shown: Inches (mm)  
Specifications and dimensions subject to change

**C&K**



# ELUM™ Series Right Angle Illuminated Latching Pushbutton

## AVAILABLE HARDWARE

Cap



**PART NO.**

**957C00000** High temperature black cap with universal standby symbol

**956C02000** High temperature black cap with no symbol

Material: 4/6 Nylon SMT compatible

Cap



**PART NO.**

**181D01000** Paint and Laser Etched with black paint and universal standby symbol

Material: Clear polycarbonate

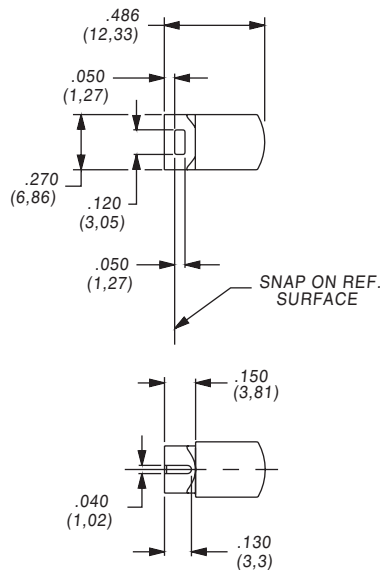
Cap



**PART NO.**

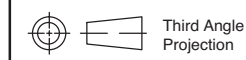
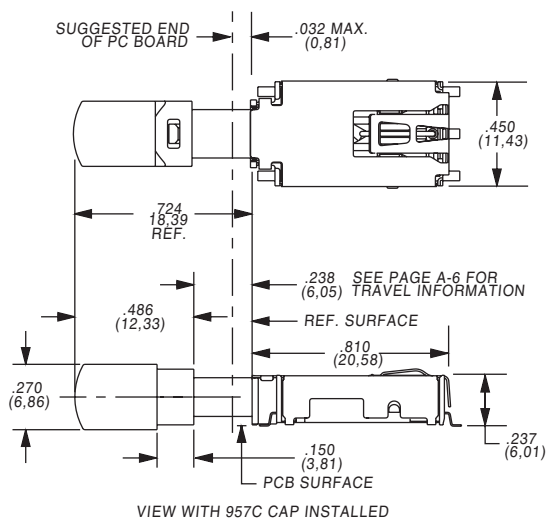
**181D00000** Paint and laser etched with white paint underlay and black paint with universal standby symbol.

Material: Clear polycarbonate



NOTE: Caps are for use with the C22 actuator style. Other colors and symbols available, consult Customer Service Center.

## CAP INSTALLATION



Third Angle  
Projection

# Mouser Electronics

Authorized Distributor

Click to View Pricing, Inventory, Delivery & Lifecycle Information:

## C&K Switches:

[ELUMEETHQ3C22](#) [ELUMOASAQ3C22](#) [ELUMEESAQ5C22](#)