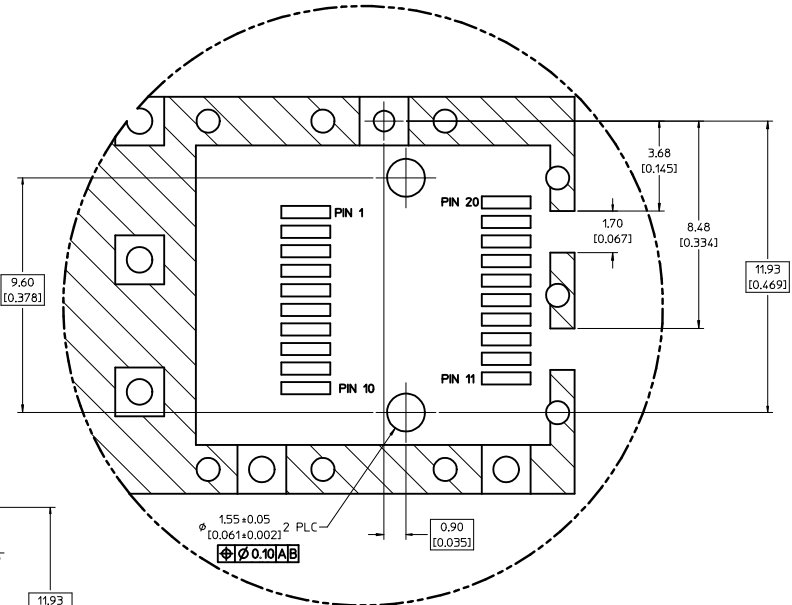
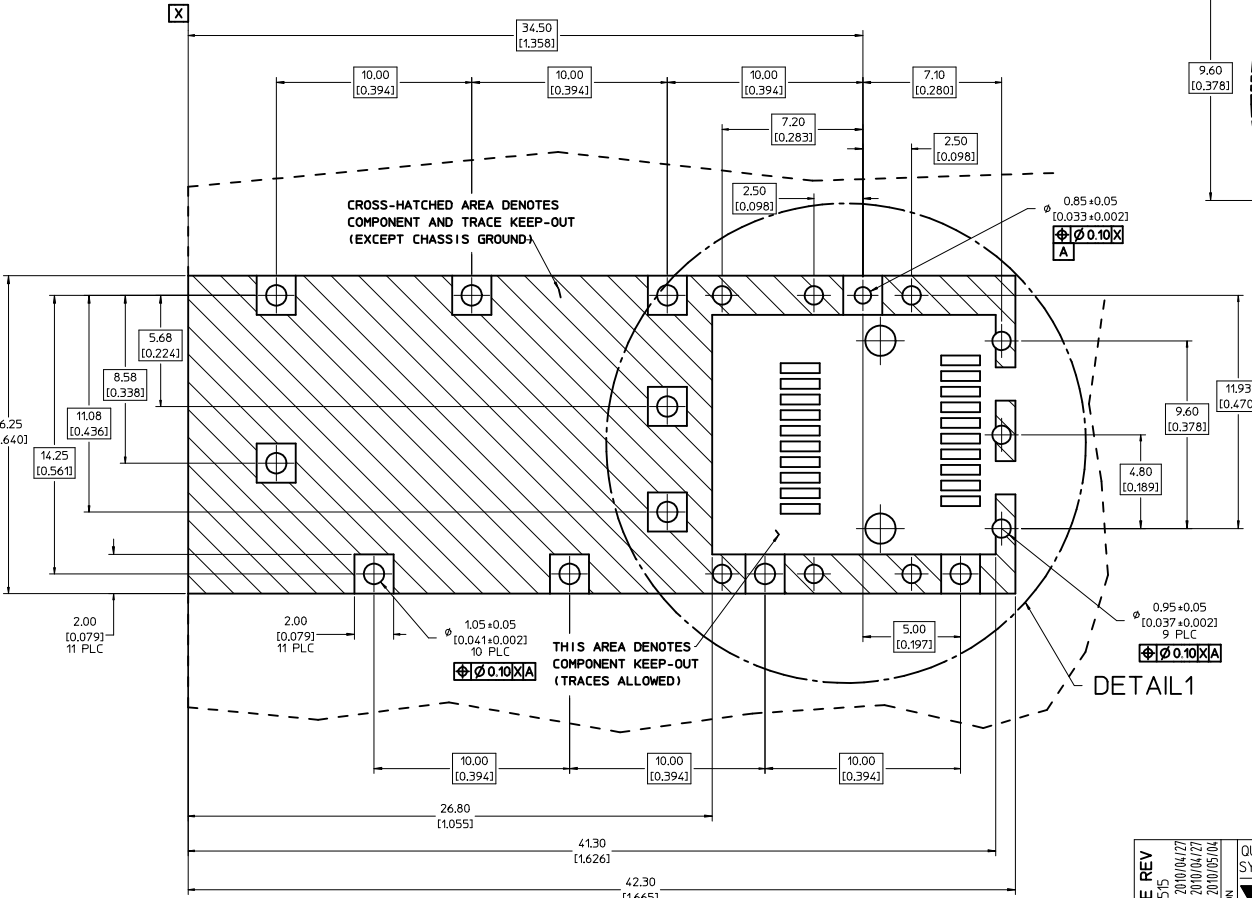


NOTES:

- PRESS FIT LEGS, 0.120 INCHES LONG.
1.57 [0.062] MINIMUM PCB THICKNESS.
- THIS CAGE IS FOR SINGLE SIDED USE ONLY.
- CAN BE USED WITH THE FOLLOWING LIGHT PIPE PART NUMBERS:
747260001 - LIGHT PIPE FROM BACK TO TOP
(REFER TO DOCUMENT SD-74726-001)
747260002 - LIGHT PIPE FROM SIDE TO TOP
(REFER TO DOCUMENT SD-74726-002)
- MATERIAL: COPPER ALLOY
PLATING: PRE-PLATED WITH NICKEL
- THIS PART MEETS THE RESTRICTION OF HAZARDOUS SUBSTANCES IN ELECTRICAL AND ELECTRONIC EQUIPMENT (ROHS) DIRECTIVE (2002/95/EC).

REV DIMS-CAGE REV EC NO: USY2010-0515 DRAWN BY: CHYOKI JANOTA APPROV: K JANOTA 2010/05/04	QUALITY SYMBOLS ▽=0 ▽=0	GENERAL TOLERANCES (UNLESS SPECIFIED): mm INCH 4 PLACES +--- +--- 3 PLACES +--- +0.005 2 PLACES ±0.13 ±0.01 1 PLACE ±0.25 ±--- ANGULAR ± 1°		DIMENSION STYLE MM/IN		SCALE 5:1	DESIGN UNITS METRIC	THIRD ANGLE PROJECTION
		DRAWN BY: JRESENDE DATE: 2009/09/28 CHECKED BY: JRESENDE DATE: 2009/09/28 APPROVED BY: JRESENDE DATE: 2009/09/28		TITLE SFP ONE PIECE CAGE PRESS-FIT (0.120 LEGS) W/ MODIFIED LATCH TANG		MOLEX INCORPORATED		
DRAFT WHERE APPLICABLE MUST REMAIN WITHIN DIMENSIONS		MATERIAL NO. 747370033		DOCUMENT NO. SD-74737-0033		SHEET NO. 1 OF 3		

1. PADS AND VIAS ARE CHASSIS GROUND.
2. HOLE LAYOUT SHOWN IS FOR SINGLE SIDED MOUNTING ONLY.
3. CONNECTOR PAD LAYOUT PER SFP MSA, WILL ACCOMMODATE MOLEX CONNECTOR SERIES 74441 OR EQUIVALENT.

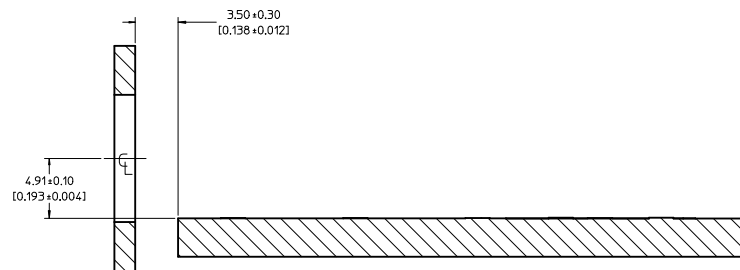
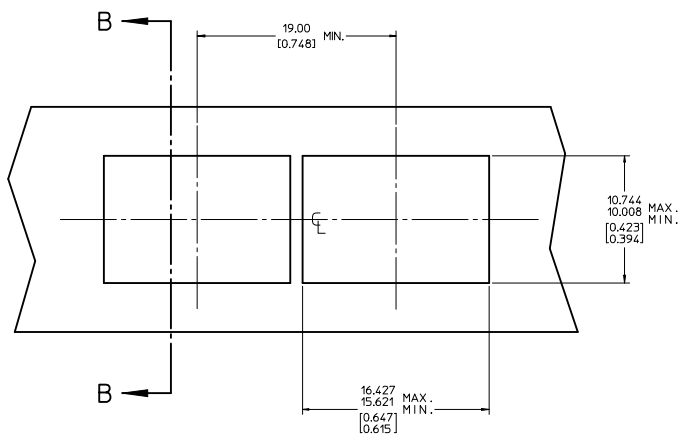
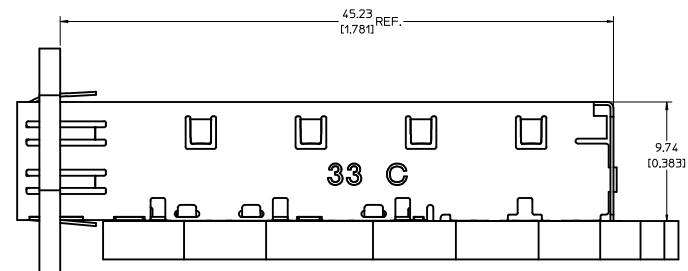


DETAIL 1
SCALE 10:1

DETAIL 1

REV DIMS-CAGE REV IEC NO: USY2010-0515 DRAWN BY: CHYK-K LANITA CHECKED BY: APPR-K LANITA DATE: 2010/04/27 DATE: 2010/05/04	QUALITY SYMBOLS ▽=0 ▽=0	GENERAL TOLERANCES (UNLESS SPECIFIED)		DIMENSION STYLE MM/IN	SCALE 8:1	DESIGN UNITS METRIC	THIRD ANGLE PROJECTION		
		4 PLACES ±--- ±---	3 PLACES ±--- ±0.005	2 PLACES ±0.13 ±0.01	1 PLACE ±0.25 ±---	ANGULAR ± 1 °	DRAFT WHERE APPLICABLE MUST REMAIN WITHIN DIMENSIONS	DRAWN BY: JRESENDE CHECKED BY: JRESENDE APPROVED BY: JRESENDE DATE: 2009/09/28 DATE: 2009/09/28 DATE: 2009/09/28	TITLE SFP ONE PIECE CAGE PRESS-FIT (0.120 LEGS) W/ MODIFIED LATCH TANG
		MATERIAL NO: 747370033		DOCUMENT NO: SD-74737-0033		SHEET NO: 2 OF 3			
		THIS DRAWING CONTAINS INFORMATION THAT IS PROPRIETARY TO MOLEX INCORPORATED AND SHOULD NOT BE USED WITHOUT WRITTEN PERMISSION							

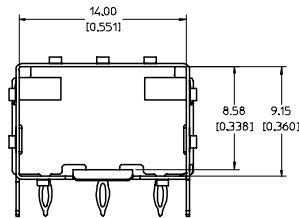
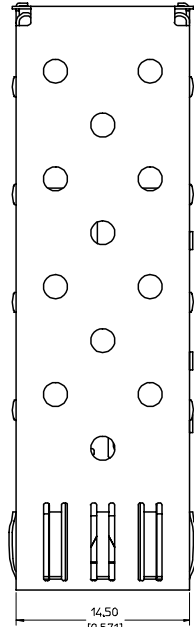
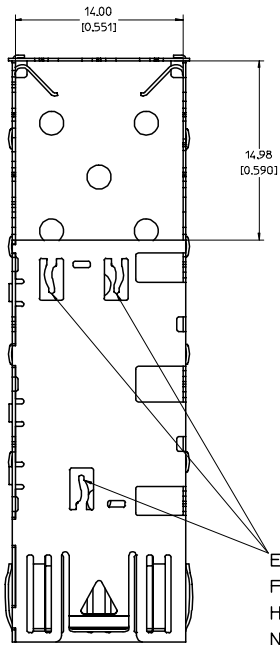
20 19 18 17 16 15 14 13 12 11 10 9 8 7 6 5 4 3 2 1



SECTION B-B

REV DIMS-CAGE REV IEC NO: USY2010-0515 DRAWN/SECRET 2010/04/27 CHKD/K.JANOTA 2010/04/27 APPR/K.JANOTA 2010/05/04	QUALITY SYMBOLS	GENERAL TOLERANCES (UNLESS SPECIFIED)		DIMENSION STYLE	SCALE	DESIGN UNITS	THIRD ANGLE PROJECTION	
	▽=0 ▽=0	mm	INCH	MM/IN	5:1	METRIC		
		4 PLACES ± --- ± ---	3 PLACES ± --- ± 0.005	JRESENDE 2009/09/28	DATE	TITLE		
		2 PLACES ± 0.13 ± 0.01	1 PLACE ± 0.25 ± ---	JRESENDE 2009/09/28	DATE	SFP ONE PIECE CAGE PRESS-FIT (0.120 LEGS) W/ MODIFIED LATCH TANG		
	ANGULAR ± 1 °		APPROVED BY		MATERIAL NO.		DOCUMENT NO.	
	DRAFT WHERE APPLICABLE MUST REMAIN WITHIN DIMENSIONS		JRESENDE 2009/09/28		747370033		SD-74737-0033	
			DATE		MOLEX INCORPORATED		SHEET NO.	
			2009/09/28				3 OF 3	
					THIS DRAWING CONTAINS INFORMATION THAT IS PROPRIETARY TO MOLEX INCORPORATED AND SHOULD NOT BE USED WITHOUT WRITTEN PERMISSION			

19 18 17 16 15 14 13 12 11 10 9 8 7 6 5 4 3 2 1

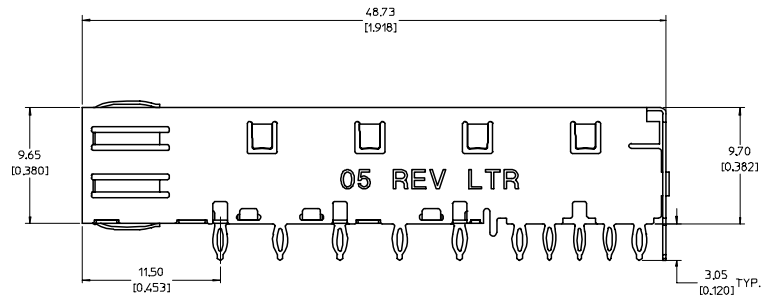
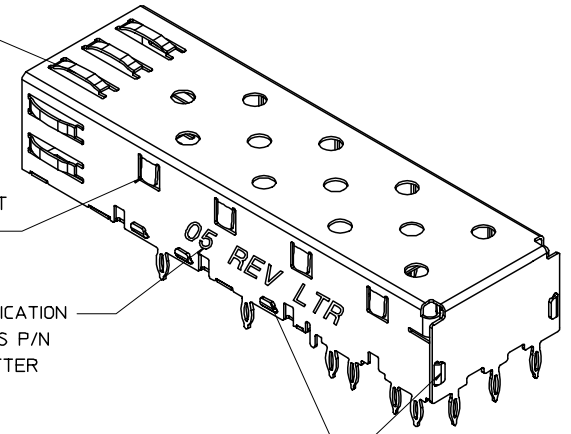


SPRING FINGER GASKET WITH TWO POINTS OF CONTACT. COMPLIES WITH (SFP) MSA BOARD AND BEZEL LOCATIONS.

TABS USED TO MOUNT LIGHT PIPE COVER

CAGE IDENTIFICATION LAST 2 DIGITS P/N AND REV LETTER (ex: 05 X)

ONE PIECE DESIGN SECURELY FASTENED



NOTES:

- PRESS FIT LEGS, 0.120 INCHES LONG. 157 [0.062] MINIMUM PCB THICKNESS.
- THIS CAGE IS FOR SINGLE SIDED USE ONLY.
- CAN BE USED WITH THE FOLLOWING LIGHT PIPE PART NUMBERS:

747260001 - LIGHT PIPE FROM BACK TO TOP
(REFER TO DOCUMENT SD-74726-001)

747260002 - LIGHT PIPE FROM SIDE TO TOP
(REFER TO DOCUMENT SD-74726-002)

4. MATERIAL: COPPER ALLOY
PLATING: PRE-PLATED WITH NICKEL

5. THIS PART MEETS THE RESTRICTION OF HAZARDOUS SUBSTANCES IN ELECTRICAL AND ELECTRONIC EQUIPMENT (ROHS) DIRECTIVE (2002/95/EC).

UPDATED 3D MODELS EC NO: USY2008-0860 DRAWN BY: 2007/10/05 CHECKED: 2007/10/09 APPROVED: 2007/10/23 DESCRIPTION:	QUALITY SYMBOLS ▽=0 ▽=0	GENERAL TOLERANCES (UNLESS SPECIFIED) <table border="1"> <tr> <th></th> <th>mm</th> <th>INCH</th> </tr> <tr> <td>4 PLACES ±</td> <td>0.13</td> <td>±.005</td> </tr> <tr> <td>3 PLACES ±</td> <td>0.25</td> <td>±.01</td> </tr> <tr> <td>2 PLACES ±</td> <td>0.25</td> <td>±.01</td> </tr> <tr> <td>1 PLACE ±</td> <td>0.25</td> <td>±.01</td> </tr> <tr> <td>ANGULAR</td> <td colspan="2">± 1°</td> </tr> </table>		mm	INCH	4 PLACES ±	0.13	±.005	3 PLACES ±	0.25	±.01	2 PLACES ±	0.25	±.01	1 PLACE ±	0.25	±.01	ANGULAR	± 1°		DIMENSION STYLE MM/IN	SCALE 5:1	DESIGN UNITS METRIC	THIRD ANGLE PROJECTION
		mm	INCH																					
4 PLACES ±	0.13	±.005																						
3 PLACES ±	0.25	±.01																						
2 PLACES ±	0.25	±.01																						
1 PLACE ±	0.25	±.01																						
ANGULAR	± 1°																							
DRAWN BY: KS IMONSO CHECKED BY: RMAHMOOD APPROVED BY: RMAHMOOD DATE: 2005/09/12 DATE: 2006/12/20 DATE: 2006/12/20	MATERIAL NO: 747370005	DOCUMENT NO: SD-74737-005	TITLE SFP ONE PIECE CAGE PRESS-FIT (0.120 LEGS) NO EMI PINS MOLEX INCORPORATED	SHEET NO: 1 OF 4																				

DRAFT WHERE APPLICABLE MUST REMAIN WITHIN DIMENSIONS

THIS DRAWING CONTAINS INFORMATION THAT IS PROPRIETARY TO MOLEX INCORPORATED AND SHOULD NOT BE USED WITHOUT WRITTEN PERMISSION

20 19 18 17 16 15 14 13 12 11 10 9 8 7 6 5 4 3 2 1

M

L

K

J

I

H

G

F

E

D

C

B

A

M

L

K

J

I

H

G

F

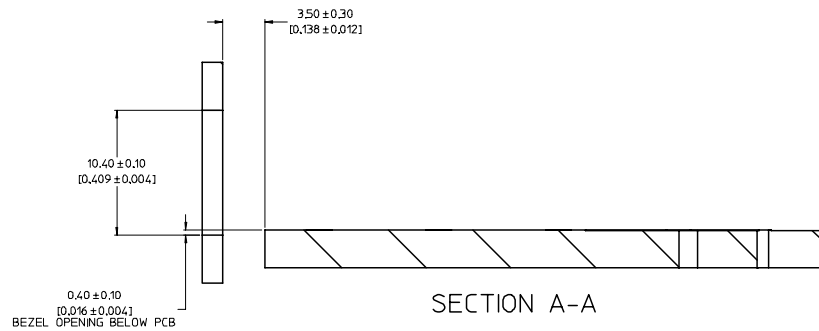
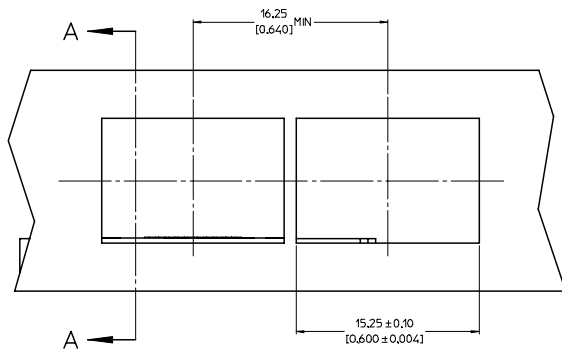
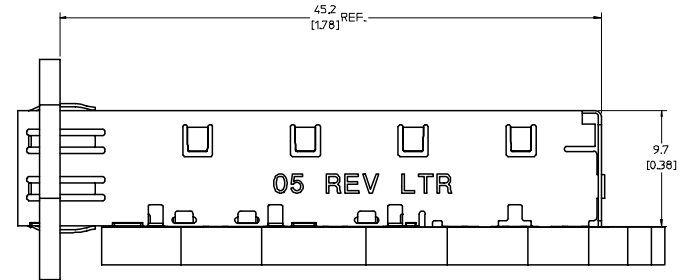
E

D

C

B

A



UPDATED 3D MODELS EC NO: USY2008-0860 DRAWN BY: TORWANKOJ CHECKED: TORWANKOJ APPROVED: TORWANKOJ DATE: 2007/10/09 DATE: 2007/10/09 DATE: 2007/10/23	QUALITY SYMBOLS	GENERAL TOLERANCES (UNLESS SPECIFIED)		DIMENSION STYLE		SCALE	DESIGN UNITS	THIRD ANGLE PROJECTION	
	▽=0 ▽=0	mm	INCH	MM/IN	DATE	5:1	METRIC		
	4 PLACES ± --- ± ---	3 PLACES ± --- ± .005	2 PLACES ± 0.13 ± .01	1 PLACE ± 0.25 ± ---	ANGULAR ± 1 °	DRAWN BY: KS IMONSO	DATE: 2005/09/12	TITLE: SFP ONE PIECE CAGE PRESS-FIT (0.120 LEGS) NO EMI PINS	
	DRAFT WHERE APPLICABLE MUST REMAIN WITHIN DIMENSIONS					CHECKED BY: RMAHMOOD	DATE: 2006/12/20	APPROVED BY: RMAHMOOD	
					DATE: 2006/12/20		MATERIAL NO: 747370005		
							DOCUMENT NO: SD-74737-005		
							SHEET NO: 3 OF 4		
THIS DRAWING CONTAINS INFORMATION THAT IS PROPRIETARY TO MOLEX INCORPORATED AND SHOULD NOT BE USED WITHOUT WRITTEN PERMISSION									

19 18 17 16 15 14 13 12 11 10 9 8 7 6 5 4 3 2 1

