

4

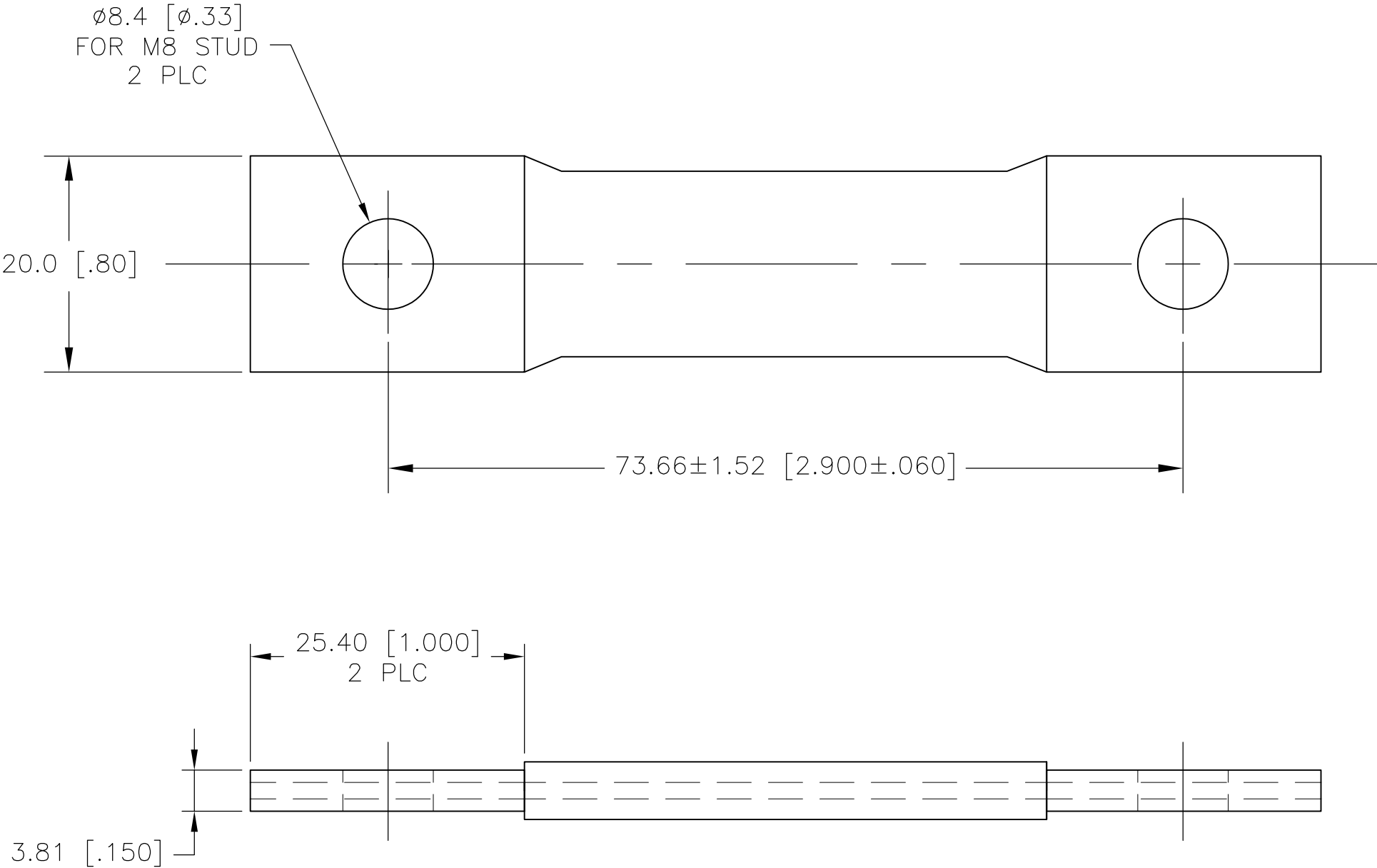
3

2


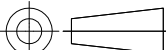
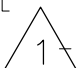

1

THIS DRAWING IS UNPUBLISHED. RELEASED FOR PUBLICATION  
© COPYRIGHT - BY TYCO ELECTRONICS CORPORATION. ALL INTERNATIONAL RIGHTS RESERVED.

LOC	DIST	REVISIONS				
G	86	P	LTR	DESCRIPTION	DATE	APVD
			B	REVISED PER ECR-09-001663	22JAN09	JR TM



- 1 MATERIAL: ELECTROLYTIC TINNED COPPER BRAID OR EQUIVALENT  
HIGH RESISTANCE 105°C DIELECTRIC MATERIAL
- 2 ALL SHARP EDGES BROKEN AND BURRS REMOVED
- 3 ITEM FREE OF DIRT, OIL, GREASE, AND ALL CONTAMINANTS.

THIS DRAWING IS A CONTROLLED DOCUMENT.		DWN jr ruth 19DEC08		<div><div>Tyco Electronics</div></div> <div>Tyco Electronics Corporation Harrisburg, PA 17105-3608</div>					
DIMENSIONS: mm [INCHES]		CHK TOM MICHIELUTTI 19DEC08							
<div></div>		APVD TOM MICHIELUTTI 19DEC08		NAME  -  INSULATED INTERCONNECT FOR BATTERY CELL  -					
		PRODUCT SPEC  -							
		APPLICATION SPEC  -							
		WEIGHT -							
0 PLC ± - 1 PLC ± 2.5 [.1] 2 PLC ± 0.25 [.010] 3 PLC ± - 4 PLC ± - ANGLES ± 5'		SIZE		CAGE CODE	DRAWING NO	RESTRICTED TO			
MATERIAL <div></div>		FINISH <div></div>		A300779		C-1958289	-		
CUSTOMER DRAWING				SCALE	2:1	SHEET	1 OF 1	REV	B

# Mouser Electronics

Authorized Distributor

Click to View Pricing, Inventory, Delivery & Lifecycle Information:

[TE Connectivity:](#)

[1958289-1](#)