

RM Cores (6298110121)

Part Number: 6298110121

98 RM CORE SET

RM (Rectangular Modulus) cores allow better shielding than E type geometries while also providing easier winding accessibility and better power dissipation than a pot core configuration. Fair-Rite's standard RM cores all have a solid center post and standard height, low profile and alternate materials are available upon request.

□ RM cores can be supplied with the center post gapped to a mechanical dimension or an A_L value.

[Catalog Drawing](#)
[3D Model](#)

Weight indicated is per pair or set.

Weight: 1.7 (g)

Dim	mm	mm tol	nominal inch	inch misc.
A	10.75	± 0.25	0.423	—
B	5.25	± 0.10	0.207	—
C	4.5	± 0.10	0.177	—
D	3.65	± 0.15	0.144	—
E	8.15	± 0.20	0.321	—
F	3.8	± 0.10	0.15	—
G	5.8	min	0.229	min
J	9.6	± 0.20	0.378	—

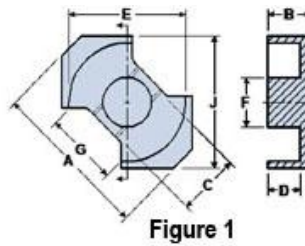



Figure 1

Chart Legend

$\Sigma l / A$: Core Constant, l_e : Effective Path Length, A_e : Effective Cross- Sectional Area, V_e : Effective Core Volume

A_L : Inductance Factor 

Explanation of Part Numbers: Digits 1 & 2 = product class and 3 & 4 = material grade.

Electrical Properties	
A_L (nH)	1020 ±25%
A_e (cm ²)	0.134
$\Sigma l / A$ (cm ⁻¹)	17.6
l_e (cm)	2.38
V_e (cm ³)	0.319
A_{min} (cm ²)	0.113

A_L value is measured at 1 kHz, B < 10 gauss.

Mouser Electronics

Authorized Distributor

Click to View Pricing, Inventory, Delivery & Lifecycle Information:

[Fair-Rite:](#)

[6298110121](#)