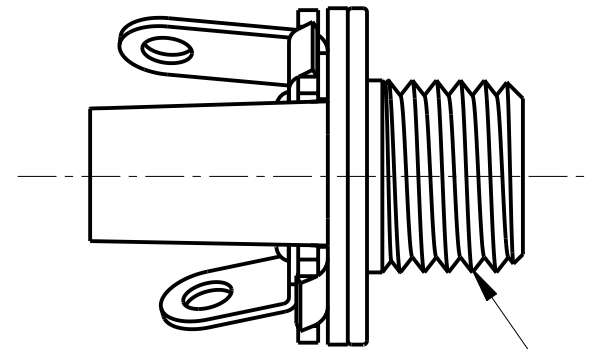
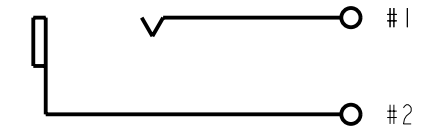


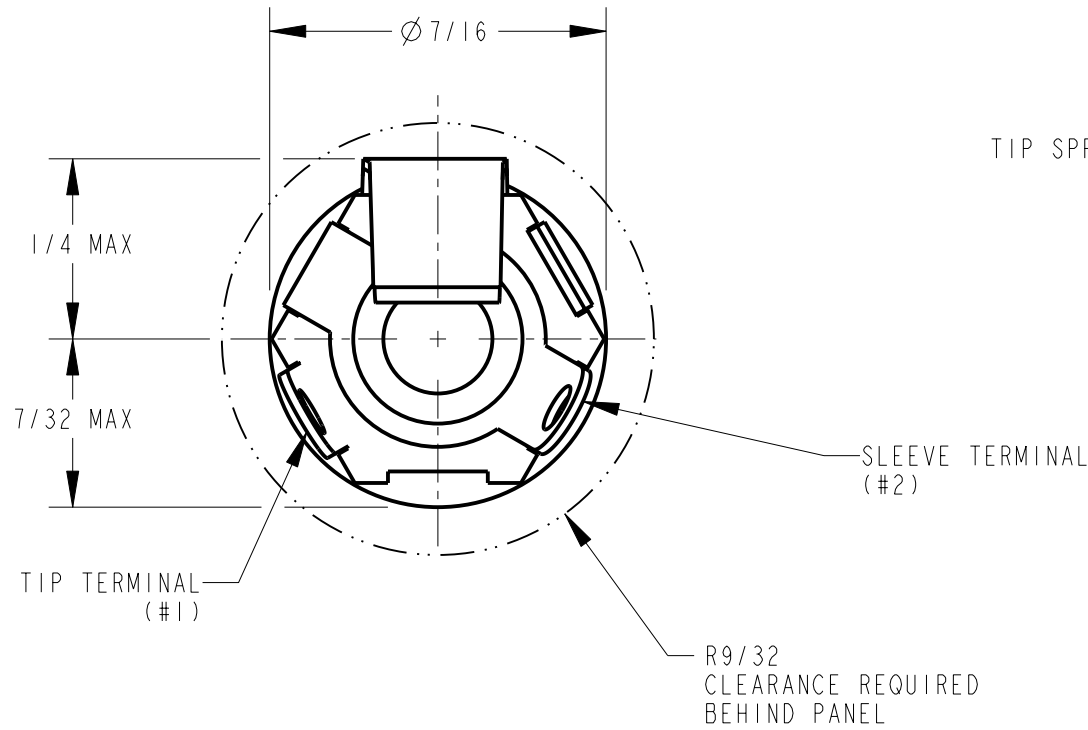
SCALE 3:1



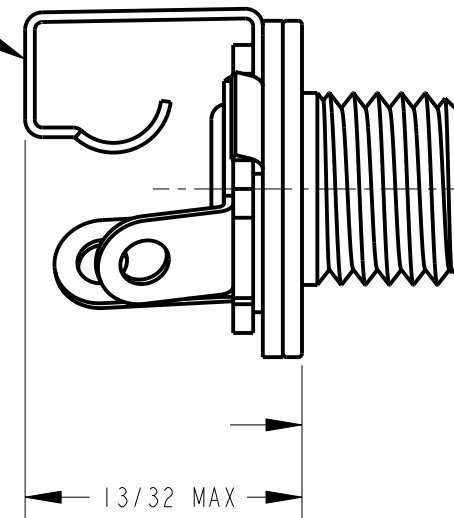
1/4-32 UNEF-2A THREAD



SCHEMATIC CIRCUIT

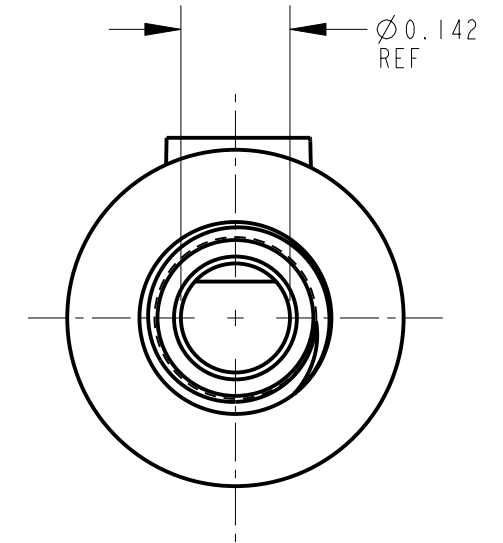


TIP SPRING



0.203 REF

13/32 MAX



NOTES:

- K163A WASHER AND K163B NUT SHIPPED UNASSEMBLED.
- REQUIREMENTS:
 SPRING LIFE: INSERTION AND WITHDRAWAL: 5000 CYCLES.
 DIELECTRIC STRENGTH: 250 VRMS A.C. BETWEEN TIP SPRING AND BUSHING.
- MATERIALS:
 BUSHING - BRASS, NICKEL PLATED
 INSULATORS - PHENOLIC & THERMOPLASTIC
 TIP SPRING - NICKEL SILVER, SILVER PLATED
 SLEEVE TERMINAL - BRASS, HOT TIN DIPPED
 WASHER - STEEL, NICKEL PLATED
 NUT - COPPER ALLOY, NICKEL PLATED

CUSTOMER DRAWING

REV	ECO NUMBER	DATE	BY	APVD
D	27196	8-28-13	TO	TJK
C	ECO #20875	7-10-97	MM	JF
B	20627	3-9-96	SG	SG
A	FIRST DRAWN	3-31-94	SG	GHJ
REVISIONS				

☆ STAR SYMBOL DENOTES CRITICAL DIMENSION
 UNLESS OTHERWISE SPECIFIED
 1. ALL DIMENSIONS IN INCHES
 - TWO PLACE DECIMALS ± 0.01
 - THREE PLACE DECIMALS ± 0.005
 - FRACTIONAL DIMENSIONS $\pm 1/64$
 - ANGLES $\pm 1^\circ$
 - ALL DIA. CONCENTRIC WITHIN 0.005 T.I.R.
 2. FEATURES ON THE SAME CENTERLINE MUST BE ALIGNED WITHIN ± 0.002
 3. REMOVE ALL BURRS
 DO NOT SCALE DRAWING

THIS DRAWING DESCRIBES A DESIGN CONSIDERED PROPRIETARY IN NATURE, DEVELOPED AND MANUFACTURED BY SWITCHCRAFT INC. AND IS RELEASED ON A CONFIDENTIAL BASIS FOR IDENTIFICATION PURPOSES ONLY.									
SIZE	WIDTH	MULT	LBS/M	TEMPER					
FINISH					MATERIAL				
SPEC No.					SPEC No.				
FIRST USED ON			SCALE						
			4:1						
DATE DRAWN	BY	CHKD	APVD						
31-Mar-94	SG	BD	GHJ						
			4-18-94	4-18-94		SHEET 1 OF 1			
NAME			PART No.		REV				
3.5 MM 2 CONDUCTOR JAX			35PM1		D				

Pro/Engineer CAD File

B

ROUTING 146 112

Mouser Electronics

Authorized Distributor

Click to View Pricing, Inventory, Delivery & Lifecycle Information:

[Switchcraft:](#)

[35PM1](#)