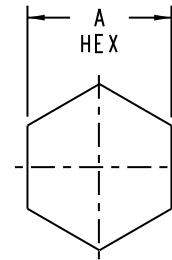


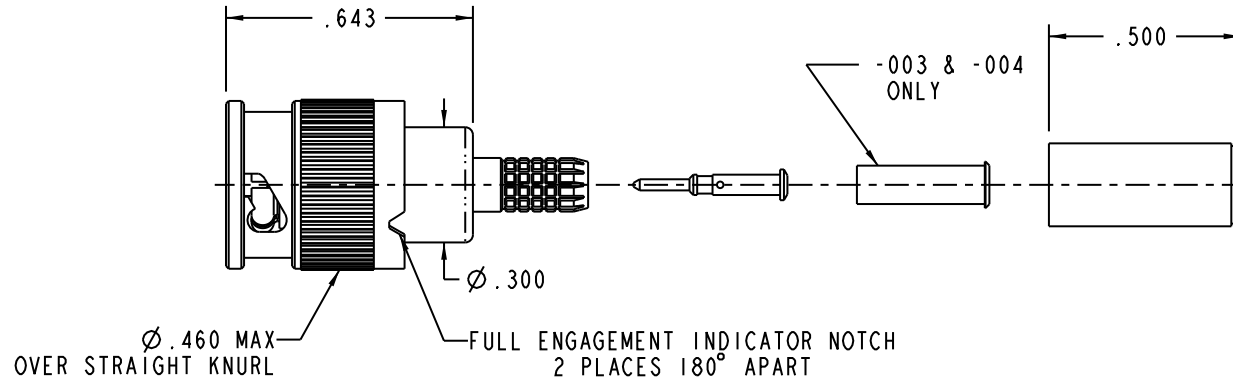
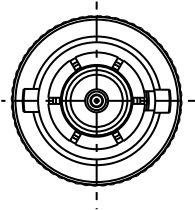
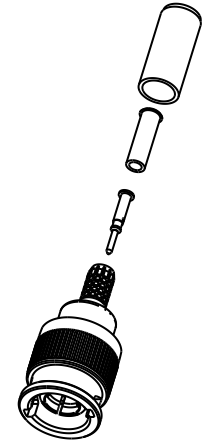
DASH NO	CABLES ACCOMMODATED	A HEX	ASSEMBLE PER
-003	TIMES 405	.178	TAI-252
-004	RG-179		
-009	8218, BELDEN YR23023 BELDEN 21-597, ESSEX		
-013	RG-59	.255	
-014	8212, BELDEN	.255	
-025	734A, LUCENT	.255	
-026	735A, LUCENT	.178	
-031	CDT RA7000	.213	

DATA CONTAINED IN THIS DOCUMENT IS PROPRIETARY TO CINCH CONNECTIVITY SOLUTIONS AND SHALL NOT BE DISCLOSED, COPIED OR USED FOR PROCUREMENT OR MANUFACTURE WITHOUT EXPRESS WRITTEN PERMISSION

REVISIONS			
REV	DESCRIPTIONS	DATE	APPROVED
K	ECO 53381	6/29/11	TKO

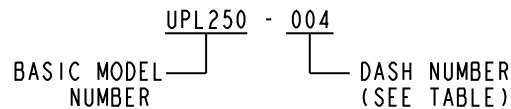


RECOMMENDED  
HEX CRIMP



-004 SHOWN



5. EXAMPLE OF COMPLETE MODEL NUMBER:



4. RoHS 6 COMPLIANT
3. 75Ω MINI "BNC" STYLE COAXIAL CABLE PLUG.
2. ALL COMPONENTS SHOWN ARE SUPPLIED LOOSE

FINISH: TFS-1A (NICKEL)

NOTES: UNLESS OTHERWISE SPECIFIED.

INTERPRET DRAWING PER MIL-STD-100. DIMENSIONS ARE IN INCHES AND INCLUDE FINISH THICKNESS UNLESS OTHERWISE SPECIFIED.		TOL: UNLESS SPECIFIED. .XX ± .02 .XXX ± .010 ANGLE ± 1°		 cinch CONNECTIVITY SOLUTIONS a bel group			
DRW BPK	6/28/11	MATERIAL:	TITLE: UPL250				
N/A	CHK TKO	6/29/11	FINISH: 	SIZE A	CAGE CODE 14949	DRAWING NO. 1-0592	REV. K
BLANK LENGTH (REF. ONLY)	MANUF	APPROVED	DO NOT SCALE DWG	SCALE 2/1	DATE 4/3/01	SHEET 1 OF 2	
N/A	PROF TITLE NO. 1-0592						

# Mouser Electronics

Authorized Distributor

Click to View Pricing, Inventory, Delivery & Lifecycle Information:

[Cinch Connectivity Solutions:](#)

[UPL250-025](#) [UPL250-026](#) [UPL250-026/T50](#)