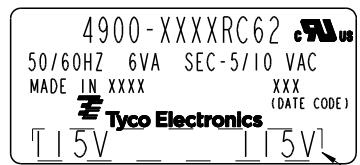
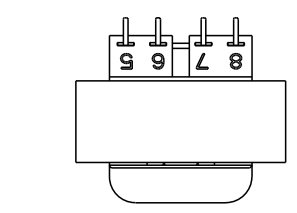
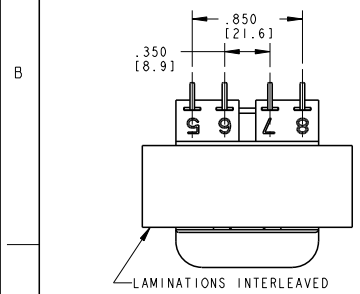
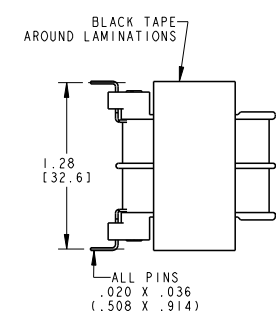
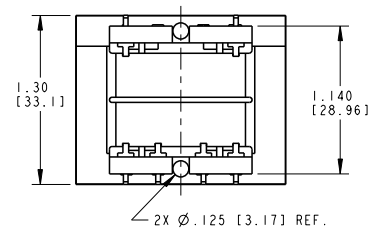
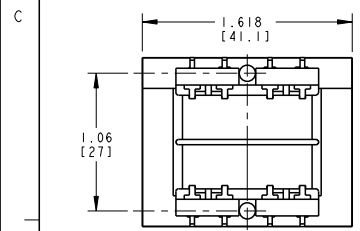
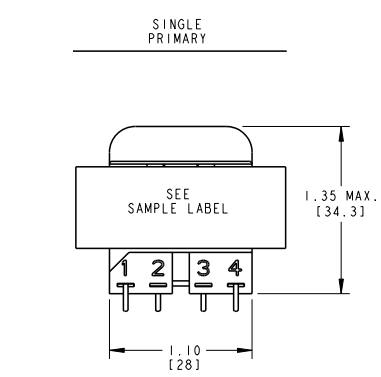
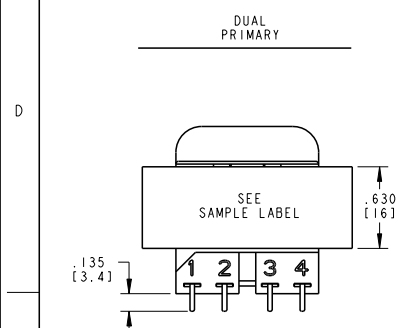


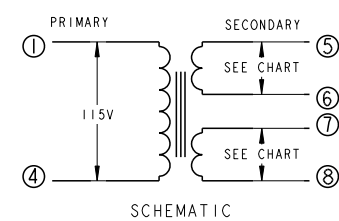
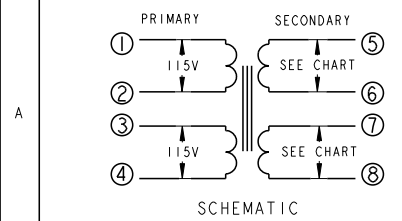
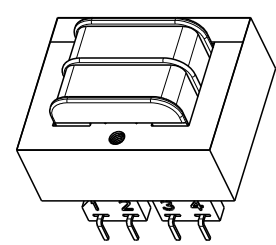
LOC	DIST	REVISIONS			
P	LTR	DESCRIPTION	DATE	DNW	APVD
F		ECR-09-005692	13APR2009	JS	JH
G		ECR-09-011290	08JUN2009	JS	JH
H		ECR-10-013410	28JUN2010	JS	DB

CERTIFICATION: UL/CUL FILE NO. E102980 HZ. 50/60 V. A. 6
 DIMENSIONS FOR REFERENCE ONLY.

PRIMARY	SECONDARY SERIES	PARALLEL	P. U. PART NUMBER	TYCO ELECTRONICS PART NUMBER
115 VAC	10 VCT	5 VAC	4900-8010RC62	3-1672209-7
115 VAC	16 VCT	8 VAC	4900-8016RC62	4-1672209-0
115 VAC	20 VCT	10 VAC	4900-8020RC62	4-1672209-1
115 VAC	24 VCT	12 VAC	4900-8024RC62	4-1672209-2
115 VAC	28 VCT	14 VAC	4900-8028RC62	4-1672209-3
115 VAC	36 VCT	18 VAC	4900-8036RC62	4-1672209-5
115 VAC	120 VCT	60 VAC	4900-8120RC62	4-1672209-8
115/230 VAC	10 VCT	5 VAC	4900-9010RC62	4-1672209-9
115/230 VAC	16 VCT	8 VAC	4900-9016RC62	5-1672209-2
115/230 VAC	20 VCT	10 VAC	4900-9020RC62	5-1672209-3
115/230 VAC	24 VCT	12 VAC	4900-9024RC62	5-1672209-4
115/230 VAC	28 VCT	14 VAC	4900-9028RC62	5-1672209-5
115/230 VAC	36 VCT	18 VAC	4900-9036RC62	5-1672209-7
115/230 VAC	120 VCT	60 VAC	4900-9120RC62	6-1672209-0



VOLTAGE ON LABEL WILL VARY PER MODEL NUMBER
 SAMPLE LABEL SCALE 4:1



DIMENSIONS: INCHES [mm]		TOLERANCES UNLESS OTHERWISE SPECIFIED: 0 PLC ± 1 PLC ± 2 PLC ±.01 3 PLC ±.005 4 PLC ± ANGLES ± FINISH ±		DWN J. SLIKE 17AUG2007 CHK D. HAGGARD 17AUG2007 APVD J. HURLBERT 17AUG2007 NAME PRODUCT SPEC APPLICATION SPEC WEIGHT CUSTOMER DRAWING		Tyco Electronics Harrisburg, PA 17105-3608 TRANSFORMER OUTLINE SIZE CAGE CODE DRAWING NO A200779 C=4900-RC62 RESTRICTED TO SCALE 3:2 SHEET 1 OF 1 REV H	
----------------------------	--	--	--	--	--	---	--

Mouser Electronics

Authorized Distributor

Click to View Pricing, Inventory, Delivery & Lifecycle Information:

[TE Connectivity:](#)

[4900-9028RC62](#)