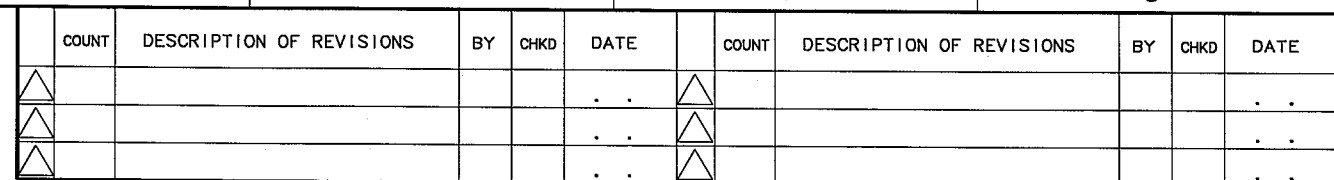


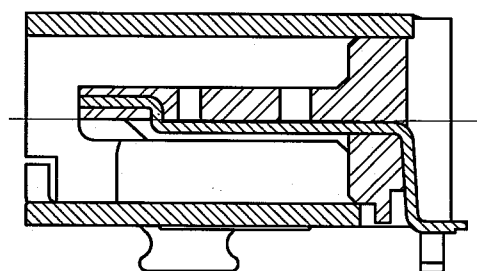
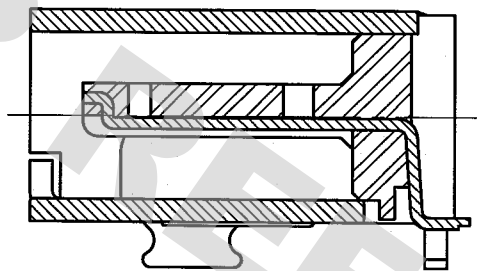
TO
Q



Technical drawing of a PCB layout showing dimensions and features. The drawing includes the following dimensions and labels:

- Overall width: 10.3
- Overall height: 5.05
- Top horizontal dimensions: 8.5, 7.8, 4.5, 0.5, 0.25, 1.2, 0.6
- Bottom horizontal dimensions: 1.7, 2.3, 1.85, 4.5, 1.35
- Left vertical dimensions: 3.7, 3.3, 2, 1.65
- Right vertical dimensions: 1.7, 2.3, 1.85, 4.5, 1.35
- Internal dimensions: 2, 1, 3, 0.6, 0.3
- Labels: "2-Ø0.8 (THROUGH HOLE)", "2-Ø1.2 (LAND)", "PATTERN PROHIBITION AREA", "PCB END", "THROUGH HOLE", "R0.6", "R0.3"

B-B(10:1)  
(CONTACT No.2~9)



NOTE 1 PER RELL:1500 PIECES.  
2 CO-PLANARITY TO BE 0.1mm MAX.

2	LCP	UL94V-0 (BLACK)	5	PS	
1	PHOSPHOR BRONZE	UNDER PLATING:NICKEL 2μm MIN CONTACT AREA:GOLD 0.2μm MIN LEAD AREA: GOLD FLASH	4	PS	
3	PHOSPHOR BRONZE	UNDER PLATING:NICKEL 1μm MIN MOUNTING AREA:TIN 1μm MIN			
NO.	MATERIAL	FINISH, REMARKS	NO.	MATERIAL	FINISH, REMARKS
CODE NO. (OLD)			DRAWN	DESIGNED	CHECKED
			M. Shimoyama	M. Shimoyama	K. Chikawa
			05.9.1	05.9.1	05.9.2
					05.9.2
DRAWING NO.			PART NO.		
EDC3-125478			MQ212B-10P		
SCALE			CODE NO.		
5 : 1			CL206-2506-5		
UNITS			1/1		
mm					
HRS					
HIROSE ELECTRIC CO., LTD					
5	6	7	8	FORM NO. 22	

# Mouser Electronics

Authorized Distributor

Click to View Pricing, Inventory, Delivery & Lifecycle Information:

[Hirose Electric:](#)

[MQ212B-10P](#)