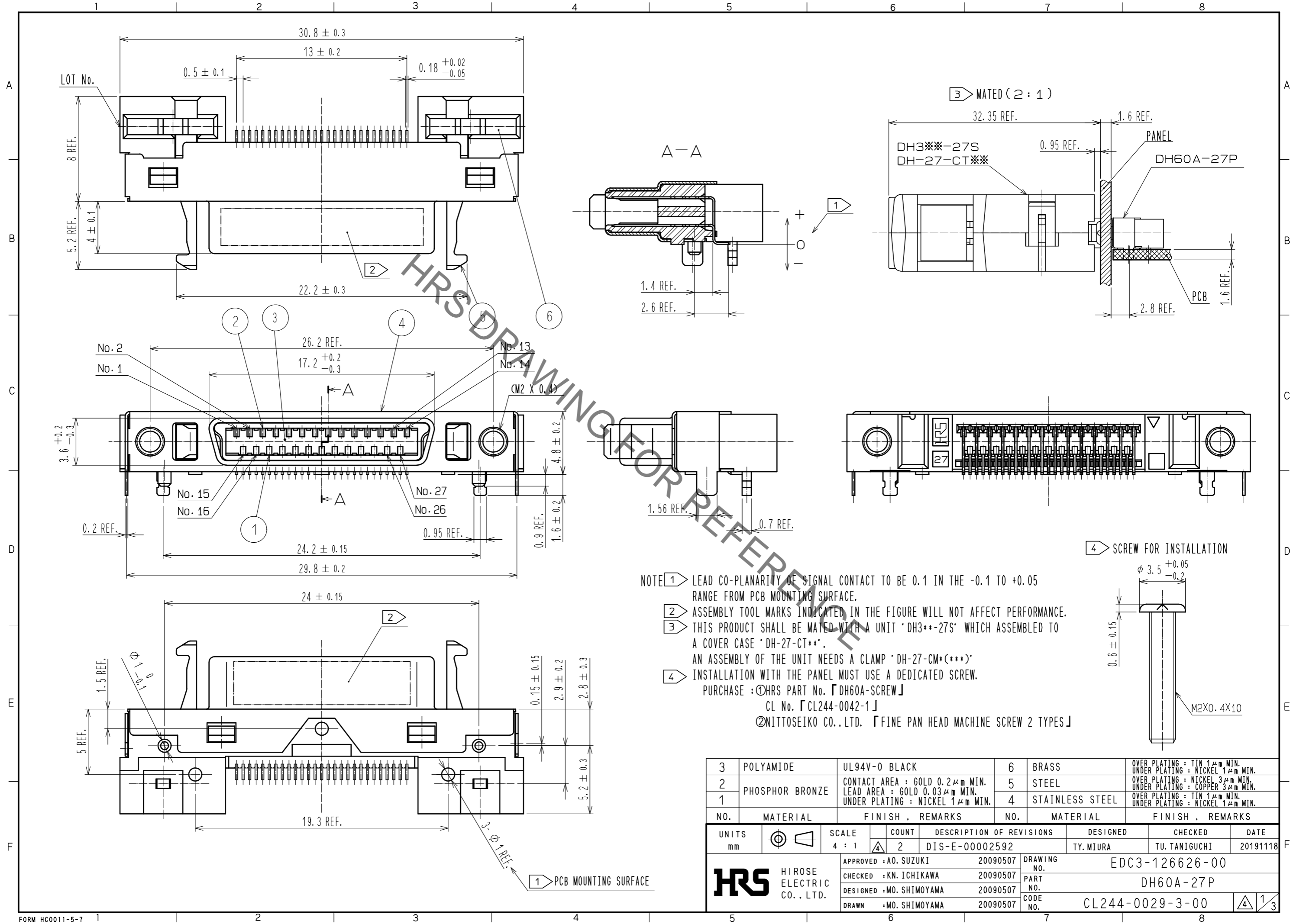


Sep.1.2020 Copyright 2020 HIROSE ELECTRIC CO., LTD. All Rights Reserved.
In case of consideration for using Automotive equipment / device which demand high reliability, kindly contact our sales window correspondents.

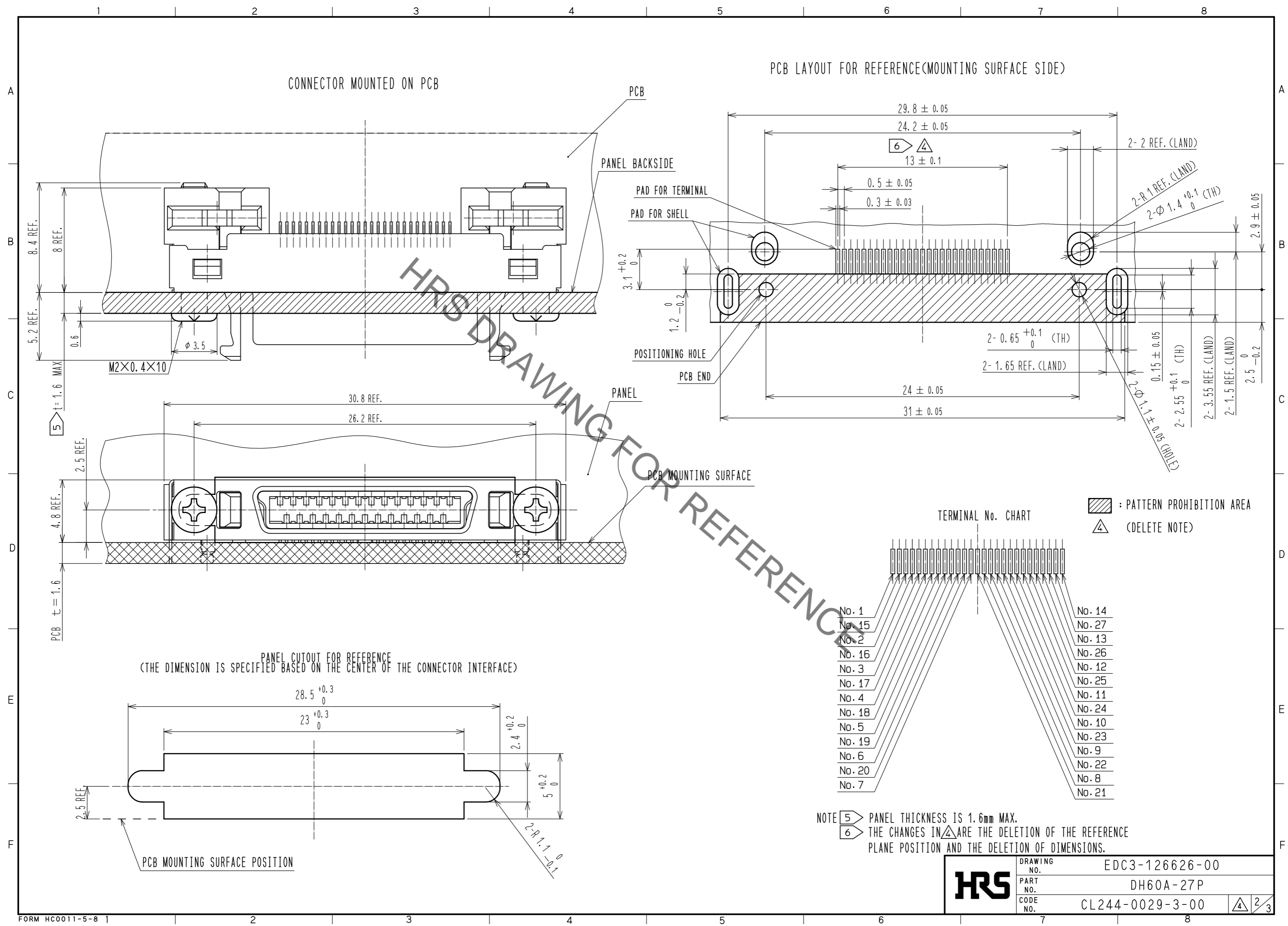


NO.	MATERIAL	FINISH . REMARKS	NO.	MATERIAL	FINISH . REMARKS
3	POLYAMIDE	UL94V-0 BLACK	6	BRASS	OVER PLATING : TIN $1 \mu\text{m}$ MIN. UNDER PLATING : NICKEL $1 \mu\text{m}$ MIN.
2	PHOSPHOR BRONZE	CONTACT AREA : GOLD $0.2 \mu\text{m}$ MIN. LEAD AREA : GOLD $0.03 \mu\text{m}$ MIN. UNDER PLATING : NICKEL $1 \mu\text{m}$ MIN.	5	STEEL	OVER PLATING : NICKEL $3 \mu\text{m}$ MIN. UNDER PLATING : COPPER $3 \mu\text{m}$ MIN.
1	PHOSPHOR BRONZE	CONTACT AREA : GOLD $0.2 \mu\text{m}$ MIN. LEAD AREA : GOLD $0.03 \mu\text{m}$ MIN. UNDER PLATING : NICKEL $1 \mu\text{m}$ MIN.	4	STAINLESS STEEL	OVER PLATING : TIN $1 \mu\text{m}$ MIN. UNDER PLATING : NICKEL $1 \mu\text{m}$ MIN.

UNITS	SCALE	COUNT	DESCRIPTION OF REVISIONS	DESIGNED	CHECKED	DATE
mm	4 : 1	2	DIS-E-00002592	TY. MIURA	TU. TANIGUCHI	20191118

APPROVED	CHECKED	DESIGNED	DRAWN	DRAWING NO.	PART NO.	CODE NO.
A0. SUZUKI	KN. ICHIKAWA	MO. SHIMOYAMA	MO. SHIMOYAMA	EDC3-126626-00	DH60A-27P	CL244-0029-3-00
20090507	20090507	20090507	20090507			

Sep.1.2020 Copyright 2020 HIROSE ELECTRIC CO., LTD. All Rights Reserved.
 In case of consideration for using Automotive equipment / device which demand high reliability, kindly contact our sales window correspondents.



HRS	DRAWING NO.	EDC3-126626-00
	PART NO.	DH60A-27P
	CODE NO.	CL244-0029-3-00
		4/2/3

Sep.1.2020 Copyright 2020 HIROSE ELECTRIC CO., LTD. All Rights Reserved.
In case of consideration for using Automotive equipment / device which demand high reliability, kindly contact our sales window correspondents.

