

# Customer Information Sheet

DRAWING No.: M80-854XXXX

SHEET 2 OF 2

IF IN DOUBT - ASK

©

NOT TO SCALE

THIRD ANGLE PROJECTION

ALL DIMENSIONS IN mm

ORDER CODE:

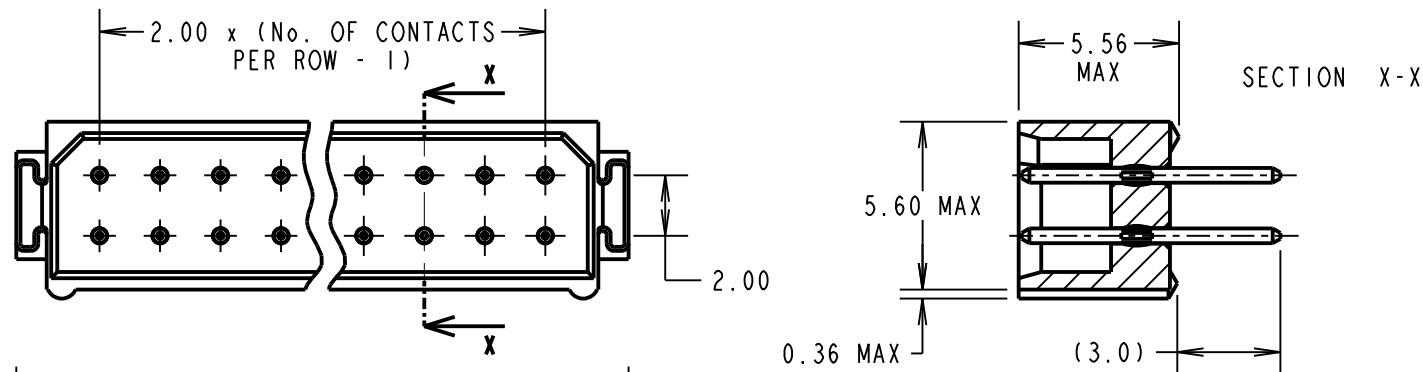
**M80-854XXXX**

TOTAL No. OF CONTACTS:

04, 06, 08, 10, 12, 14, 16,  
18, 20, 26, 34, 44

FINISH:

22 = SELECTIVE GOLD + TIN/LEAD  
45 = GOLD  
42 = SELECTIVE GOLD / 100% TIN



NOTES:

- 2-OFF STRAIN RELIEF STRAPS  
M80-0030006 MAY BE USED  
WITH THIS CONNECTOR.

SPECIFICATIONS:

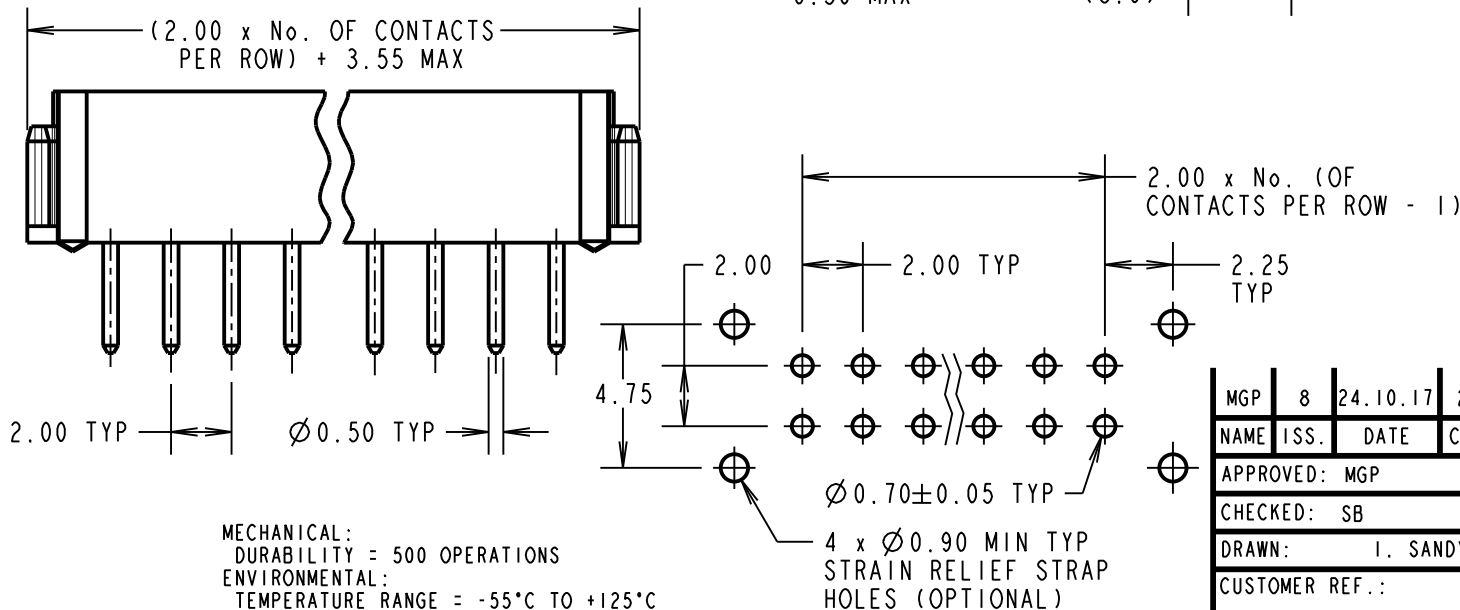
MATERIAL:  
MOULDING = POLYAMIDE 46 UL94V-0, BLACK  
CONTACTS = PHOSPHOR BRONZE

FINISH:

CONTACTS:  
22 = 0.75µ GOLD ON CONTACT AREA,  
3µ 90/10 TIN/LEAD ON TAILS  
42 = 0.75µ GOLD ON CONTACT AREA,  
3.0µ 100% TIN ON TAILS  
45 = 0.75µ GOLD

ELECTRICAL:

CURRENT RATING (25°C) = 3.0A MAX.  
CURRENT RATING (85°C) = 2.2A MAX.  
WORKING VOLTAGE = 800V AC/DC  
VOLTAGE PROOF = 1200V AC/DC  
CONTACT RESISTANCE (INITIAL) = 20 mΩ MAX.  
CONTACT RESISTANCE (AFTER CONDITIONING) = 25 mΩ MAX.  
INSULATION RESISTANCE (INITIAL) = 1000 MΩ MIN.  
INSULATION RESISTANCE (AFTER CONDITIONING) = 100 MΩ MIN.



MECHANICAL:  
DURABILITY = 500 OPERATIONS  
ENVIRONMENTAL:  
TEMPERATURE RANGE = -55°C TO +125°C  
PACKING:  
TUBE  
FOR COMPLETE SPECIFICATION, SEE COMPONENT  
SPECIFICATION C005XX (LATEST ISSUE)

RECOMMENDED  
PCB LAYOUT

|                 |      |          |        |
|-----------------|------|----------|--------|
| MGP             | 8    | 24.10.17 | 20881  |
| NAME            | ISS. | DATE     | C/NOTE |
| APPROVED: MGP   |      |          |        |
| CHECKED: SB     |      |          |        |
| DRAWN: I. SANDY |      |          |        |
| CUSTOMER REF.:  |      |          |        |
| ASSEMBLY DRG:   |      |          |        |

## HARWIN

www.harwin.com  
technical@harwin.com

THIS DRAWING AND ANY  
INFORMATION OR DESCRIPTIVE  
MATTER SET OUT HEREON ARE  
CONFIDENTIAL AND COPYRIGHT  
PROPERTY OF THE HARWIN  
GROUP AND MUST NOT BE  
DISCLOSED, LOANED, COPIED  
OR USED FOR MANUFACTURING,  
TENDERING OR FOR ANY  
OTHER PURPOSE WITHOUT  
THEIR WRITTEN PERMISSION.

TOLERANCES  
X. = ±1mm  
X.X = ±0.50mm  
X.XX = ±0.10mm  
X.XXX = ±0.01mm  
ANGLES = ±5°  
UNLESS STATED

MATERIAL:  
SEE ABOVE  
FINISH: SEE ABOVE  
S/AREA: mm<sup>2</sup>

TITLE: DATAMATE DIL  
VERTICAL PC TAIL PLUG  
ASSEMBLY (RoHS)  
DRAWING NUMBER:  
**M80-854XXXX**

SHT  
2 OF 2

# Mouser Electronics

Authorized Distributor

Click to View Pricing, Inventory, Delivery & Lifecycle Information:

## Harwin:

[M80-8542622](#) [M80-8544442](#) [M80-8541442](#) [M80-8541842](#) [M80-8540645](#) [M80-8540642](#) [M80-8541042](#) [M80-8541045](#) [M80-8541642](#) [M80-8540442](#) [M80-8540445](#) [M80-8541245](#) [M80-8541242](#) [M80-8540842](#) [M80-8542642](#) [M80-8542242](#) [M80-8543442](#) [M80-8542042](#) [M80-8541022](#) [M80-8541222](#) [M80-8540845](#) [M80-8541445](#) [M80-8541845](#) [M80-8542045](#) [M80-8542645](#) [M80-8543445](#)