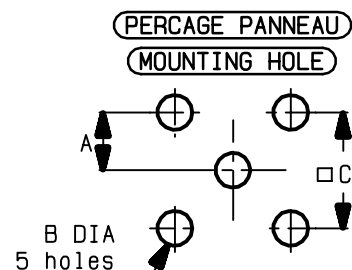
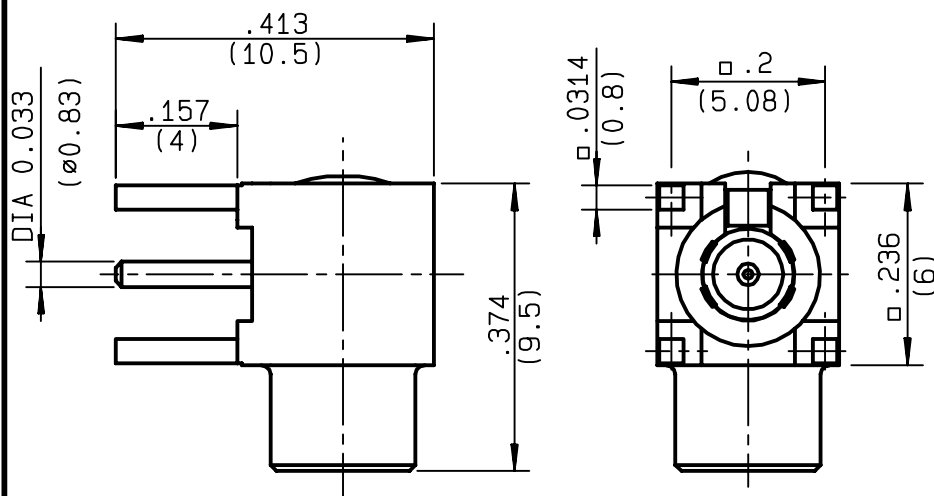


RIGHT ANGLE JACK RECEPTACLE FOR PCB SOLDER LEGS

R213.665.000

SERIES MCX 75



| | MM | | INCH | |
|---|------|------|------|------|
| | maxi | mini | maxi | mini |
| A | - | - | - | - |
| B | 1.4 | 1.3 | .055 | .051 |
| C | 5.13 | 5.03 | .202 | .198 |

| | | |
|---------------------------------|--|------------------------|
| NOMINAL IMPEDANCE | 75 | Ω |
| FREQUENCY RANGE | 0-6 | GHz |
| TEMPERATURE RATING | -55/+155 | $^{\circ}\text{C}$ |
| V.S.W.R | 1.05* + .02 x F(GHz)Maxi | |
| RF INSERTION LOSS | 0.03* \sqrt{F} (GHz) dB Maxi | |
| VOLTAGE RATING | 335 | Veff Maxi |
| DIELECTRIC WITHSTANDING VOLTAGE | 1000 | Veff Mini |
| INSULATION RESISTANCE | 1000 | M Ω Mini |
| HERMETIC SEAL | NA | Atm.cm ³ /s |
| LEAKAGE (pressurized only) | NA | |
| MECHANICAL DURABILITY | 500 | Cycles |
| WEIGHT | 1.77 | gr |
| SPECIFICATION | | |

CABLES :

OTHERS CHARACTERISTICS

* COAXIAL TRANSMISSION LINE ONLY

| | | |
|----------------------------|-----------|-----------|
| CABLE RETENTION | NA | N Mini |
| CENTER CONTACT RETENTION | | |
| Axial force - mating end | 10 | N Mini |
| Axial force - opposite end | 10 | N Mini |
| Torque | NA | cm.N Mini |
| RECOMMENDED TORQUES | | |
| Mating | NA | cm.N |
| Panel nut | NA | cm.N |
| Clamp nut | NA | cm.N |

CONNECTOR PARTS. MATERIALS

| | |
|----------------|------------------|
| BODY | BRASS |
| OUTER CONTACT | |
| CENTER CONTACT | BERYLLIUM COPPER |
| INSULATOR | PTFE |
| GASKET | |
| OTHERS PIECES | BRASS |

FINISH (all values are given in micrometers)

| |
|------------------------|
| GOLD 0.2 OVER NICKEL 2 |
| GOLD 1.3 OVER NICKEL 2 |
| - |
| - |
| GOLD 0.2 OVER NICKEL 2 |

AGRIODOS

ISSUE
9916B00

CREATION DATE
22/08/1996

FILE PART-NUMBER
94-0142-028



RADIALL®

The information given here is subject to change without notice.
Design changes may be in order to improve the product.

Connect to the future

Mouser Electronics

Authorized Distributor

Click to View Pricing, Inventory, Delivery & Lifecycle Information:

Radial:

[R213665000](#)