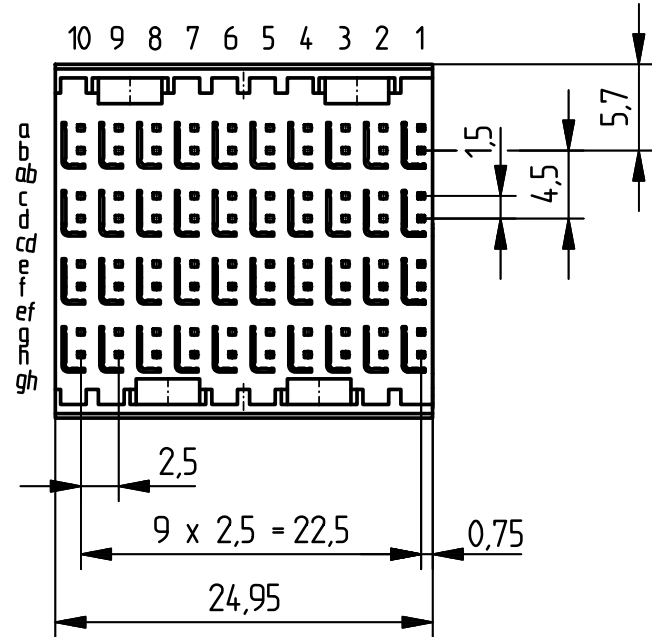
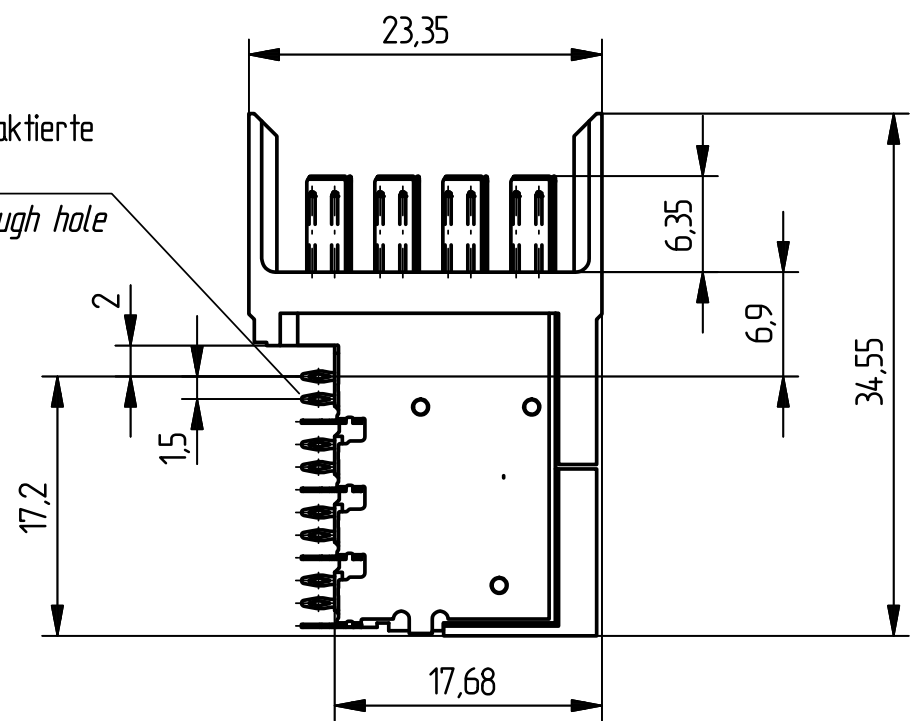
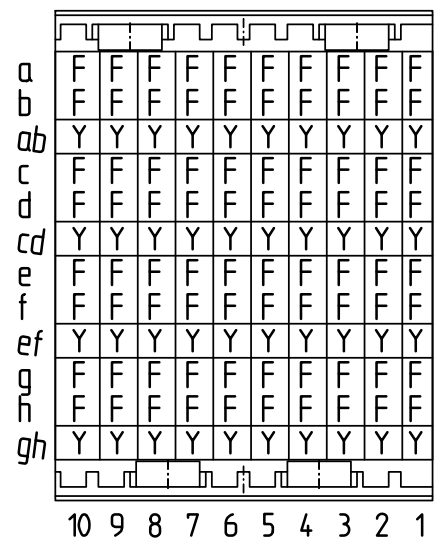


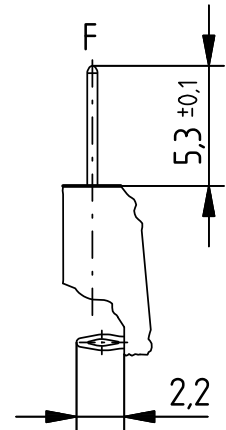
EE-Zone für durchkontaktierte Löcher  $\varnothing 0.6 \pm 0.05$   
 compliant zone for through hole  $\varnothing 0.6 \pm 0.05$



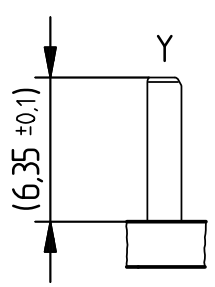
Bestückungsplan - contact layout



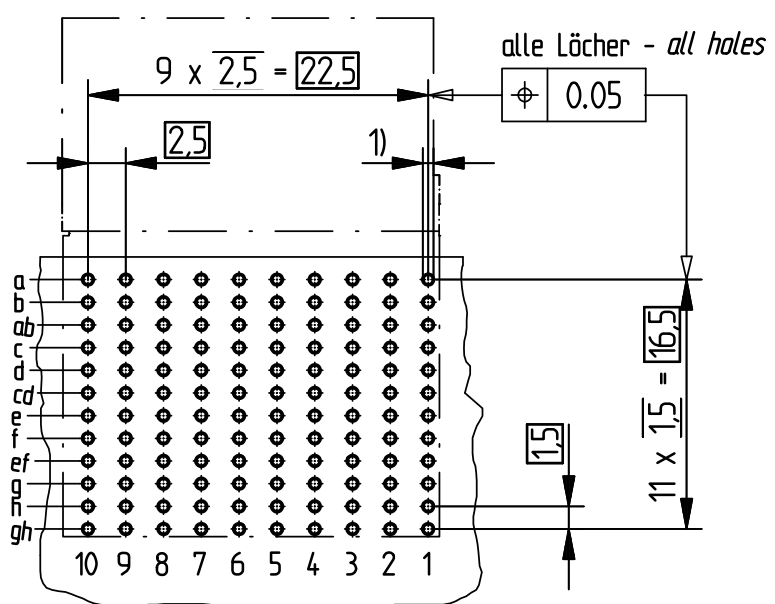
Kontaktversion, Messerkontakt  
 Contact Option, Male Contact



Kontaktversion, Schirmmesser  
 Contact Option, Shielding Contact



Lochbild für Leiterplatte Board hole pattern  
 (Bestückungsseite) (Component mounting side)



1)  $\varnothing 0.6 \pm 0.05$  Durchmesser des metallisierten Loches  
 $\varnothing 0.6 \pm 0.05$  Diameter of finished plated-through hole

$\varnothing 0.7 \pm 0.02$  Bohrungsdurchmesser des Loches  
 $\varnothing 0.7 \pm 0.02$  Diameter of drilled hole

Schichtaufbau im metallisierten Loch  
 siehe Zeichnung 114406

Metal plating of plated-through hole  
 see drawing 114406

Consider protection memo from DIN 34	Information: F + Y siehe Bestückungsplan / see contact layout Anforderungsstufe 2 / class 2	Tolerances  All Dimensions in mm	Scale 2:1	
	All rights reserved. Only for information. To insure that this is the latest version of this drawing, please contact one of the ERNI companies before using.	Subject to modification without prior notice. Drawing will not be updated.	Designation <b>ERmetZD Messerleiste abg. 4-10</b> <i>ERmetZD Male Con. angle 4-10</i>	
	b Index	18.04.2006 Date	www.ERNI.com	973101
		H:00057137.SZA	ERMZD	

# Mouser Electronics

Authorized Distributor

Click to View Pricing, Inventory, Delivery & Lifecycle Information:

[ERNI Electronics:](#)

[973101](#)