






PulseJack™ 1xN Tab-Down

Description:

100 Base-TX (Fast Ethernet) RJ45 1xN Tab-DOWN with or without LEDs integrated magnetics connector (ICM) designed to support applications such as: SOHO (ADSL modems), LAN-on-Motherboard (LOM), Hub and Switches.



Features and Benefits:

-  RoHS peak wave solder temperature rating 260°C
-  Suitable for CAT 5 & 6 Fast Ethernet Cable or better UTP
-  Meets IEEE 802.3 specification
-  350µH minimum OCL with 8mA bias current
-  High performance for maximum EMI suppression

Electrical Specifications @ 25°C - Operating Temperature 0°C to +70°C

RoHS Compliant Part Number	Turns Ratio		Number of Ports	LEDs ¹ L/D	Insertion Loss TX/RX (dB TYP)	Return Loss (dB TYP) 100Ω (± 15 Ω)				Crosstalk (dB TYP)			Common Mode Rejection (dB TYP)		Hipot (VDC MIN) @ 50/60 Hz 1 minute
	TX	RX				1-100 MHz	1-10 MHz	30 MHz	60-80 MHz	1-30 MHz	30-60 MHz	60-100 MHz	1-50 MHz	50-130 MHz	
J8064D628ANL	1CT:1CT	1CT:1CT	1x2	G/Y	-1.0	-20	-16	-12	-40	-35	-30	-30	-20	2250	
JX80-0019NL ²	1CT:1CT	1CT:1CT	1x2	G/G	-1.0	-20	-16	-12	-40	-35	-30	-30	-20	2250	
J8064D648ANL	1CT:1CT	1CT:1CT	1x4	G/Y	-1.0	-20	-16	-12	-40	-35	-30	-30	-20	2250	
JX80-0022NL ²	1CT:1CT	1CT:1CT	1x4	G/G	-1.0	-20	-16	-12	-40	-35	-30	-30	-20	2250	
J8064D668ANL	1CT:1CT	1CT:1CT	1x6	G/Y	-1.0	-20	-16	-12	-40	-35	-30	-30	-20	2250	
JX8064D668ANL ²	1CT:1CT	1CT:1CT	1x6	G/Y	-1.0	-20	-16	-12	-40	-35	-30	-30	-20	2250	
J8064D688ANL	1CT:1CT	1CT:1CT	1x8	G/Y	-1.0	-20	-16	-12	-40	-35	-30	-30	-20	2250	
JX8064D688ANL ²	1CT:1CT	1CT:1CT	1x8	G/Y	-1.0	-20	-16	-12	-40	-35	-30	-30	-20	2250	
J8064E62NL	1CT:1CT	1CT:1CT	1x2	None	-1.0	-20	-16	-12	-40	-35	-30	-30	-20	2250	
J8064E64NL	1CT:1CT	1CT:1CT	1x4	None	-1.0	-20	-16	-12	-40	-35	-30	-30w	-20	2250	
J8064E66NL	1CT:1CT	1CT:1CT	1x6	None	-1.0	-20	-16	-12	-40	-35	-30	-30	-20	2250	
J8064E68NL	1CT:1CT	1CT:1CT	1x8	None	-1.0	-20	-16	-12	-40	-35	-30	-30	-30	2250	

Notes: 1. LEDs Left/Right: G = green; Y = yellow 2. Operating temperature: -40°C to +85°C

RJ45 Durability Test Rating

Part Number	Mating Force (MAX)	Unmating Force (MAX)	Durability	Plug to Jack Retention (MIN)
J80 Series	5 lbs./2.268 kgs.	5 lbs./2.268 kgs.	750 Insertions	20 lbs./9.072 kgs.

PulseJack™

1xN Tab-Down

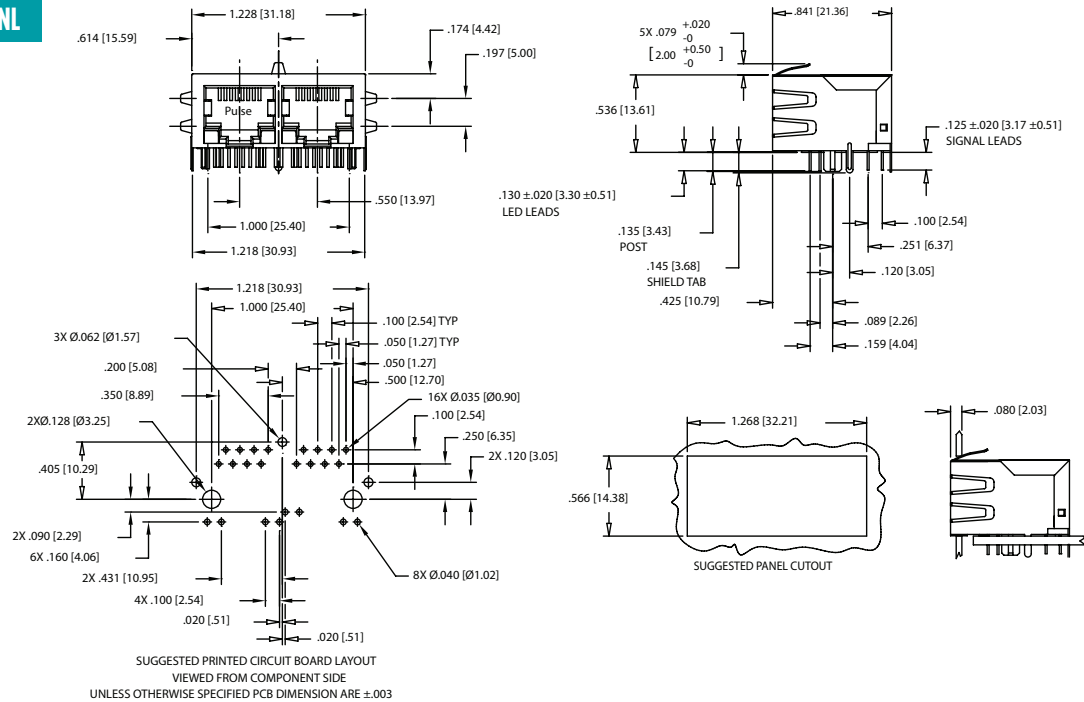
RJ45 Material Specification

Part Number	Shield		Contact			Housing		
	Material	Finish	Material	Plating Area	Solder Area	Material	Specification	MSL ²
J80 Series	Brass	10-20μ inches thick Nickel over 10-20μ inches thick nickel	Phosphor Bronze	Nickel underplating and selective gold plating 30μ inches	Tin matte finish	Thermoplastic	UL 94 V-0	1

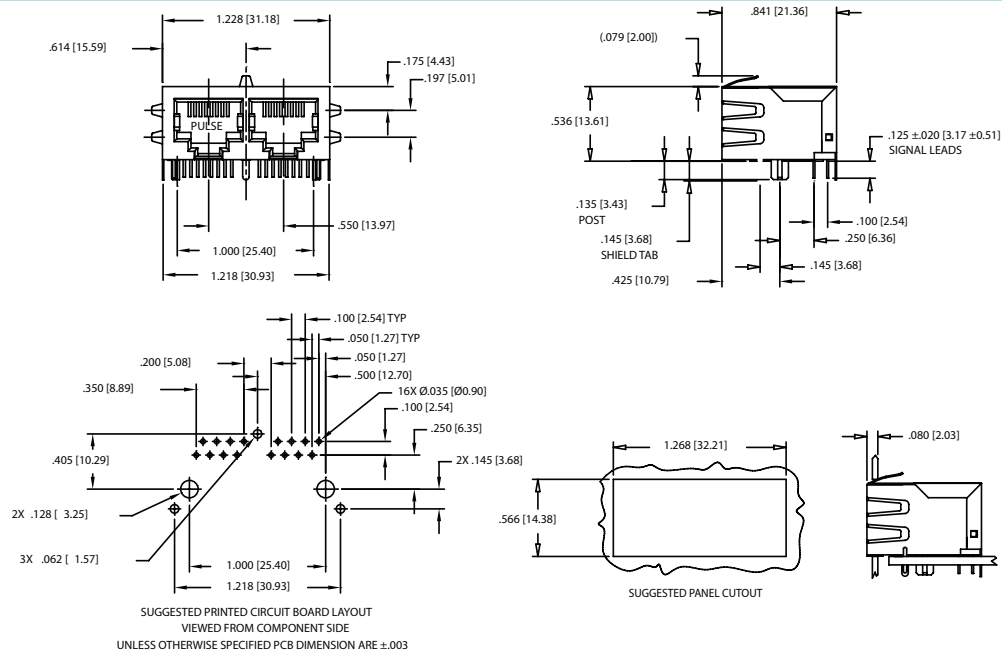
Notes: 1. Connector dimensions comply with FCC dimension requirements 2. MSL = Moisture Sensitivity Level rating from 1 to 5 (highest rating = 1, lowest rating = 5).

Mechanicals

J8064D628ANL, JX80-0019NL



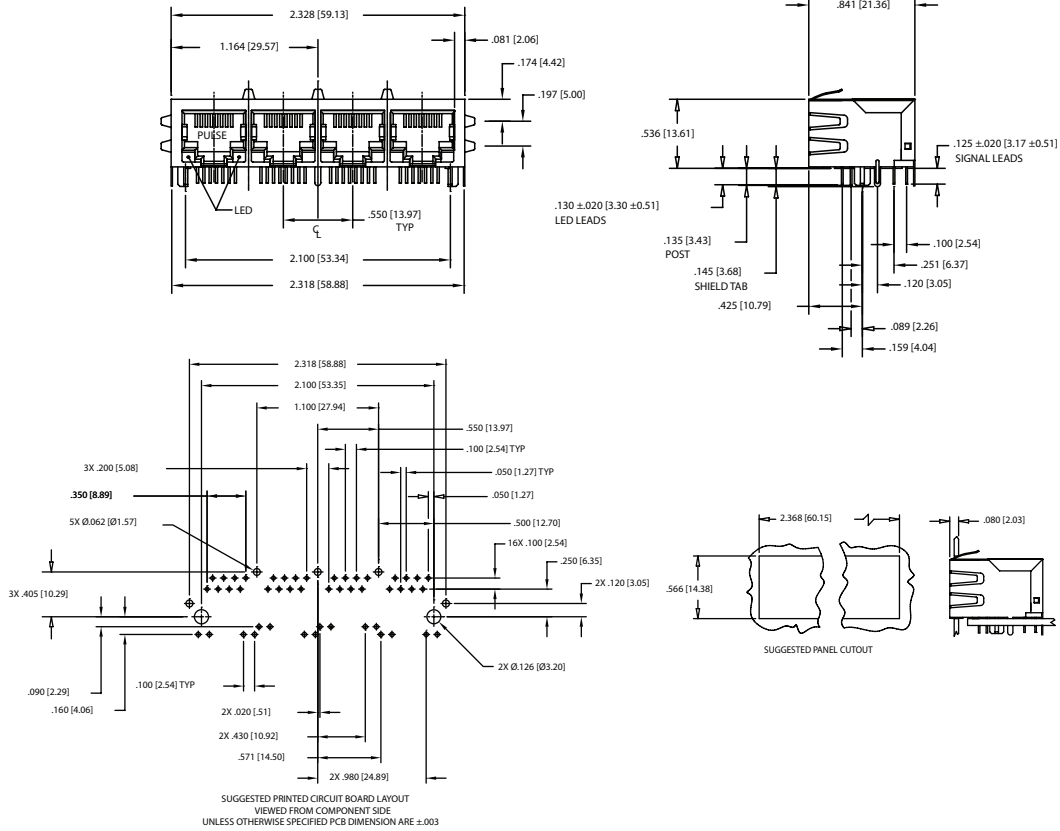
J8064E62NL



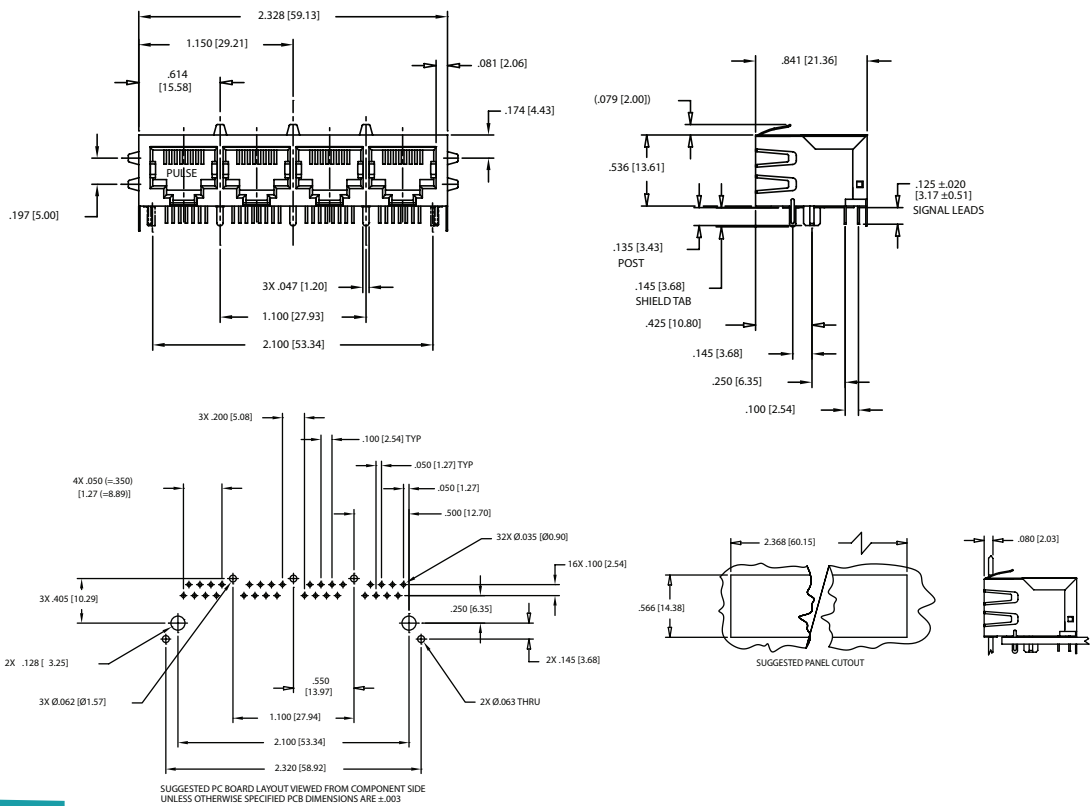
PulseJack™ 1xN Tab-Down

Mechanicals

**J8064D648ANL
JX80-0022NL**



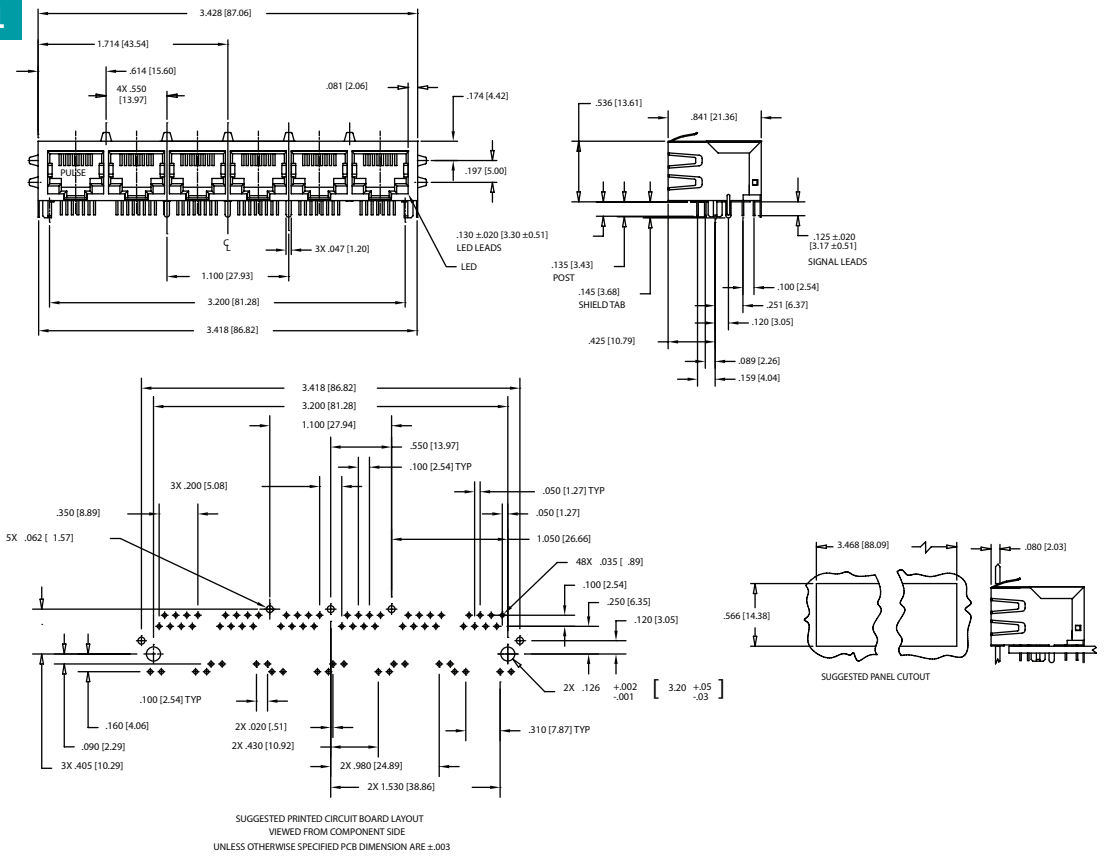
J8064E64NL



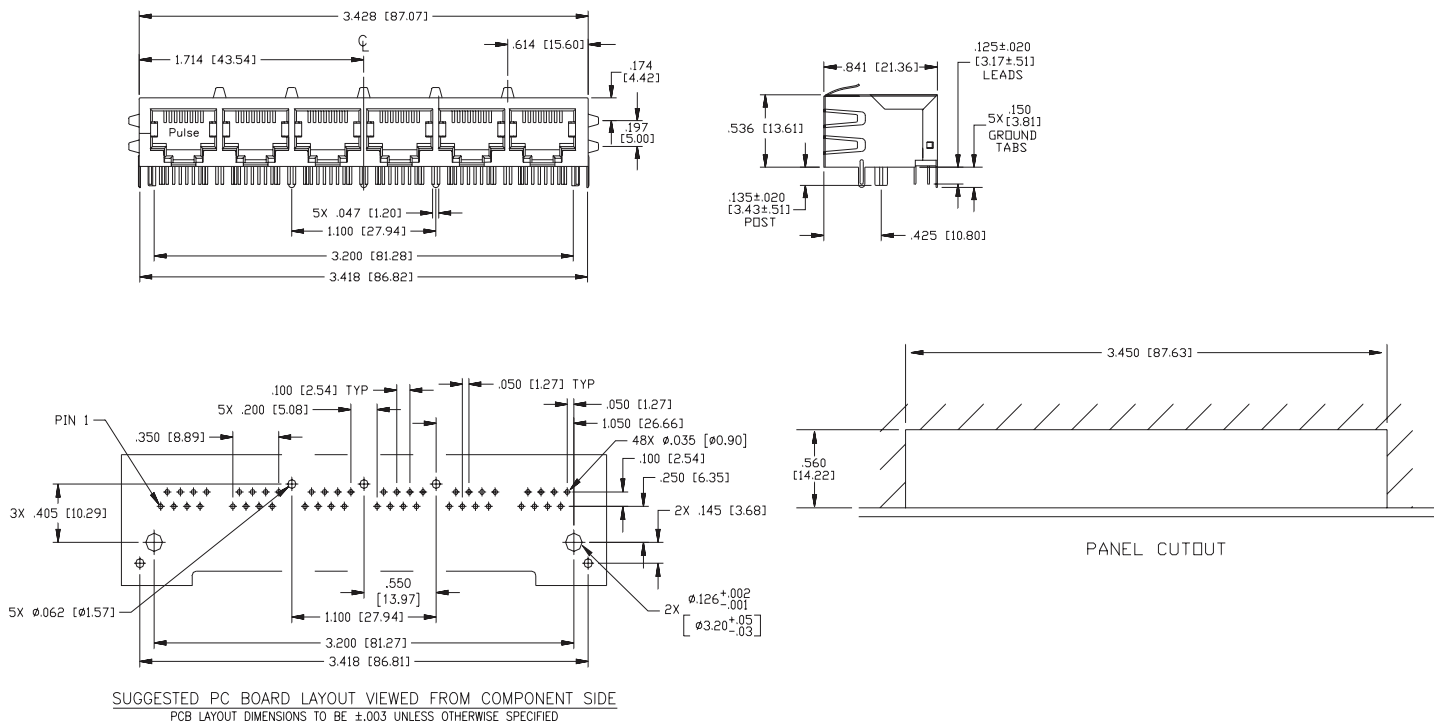
PulseJack™ 1xN Tab-Down

Mechanicals

J8064D668ANL, JX8064D668ANL



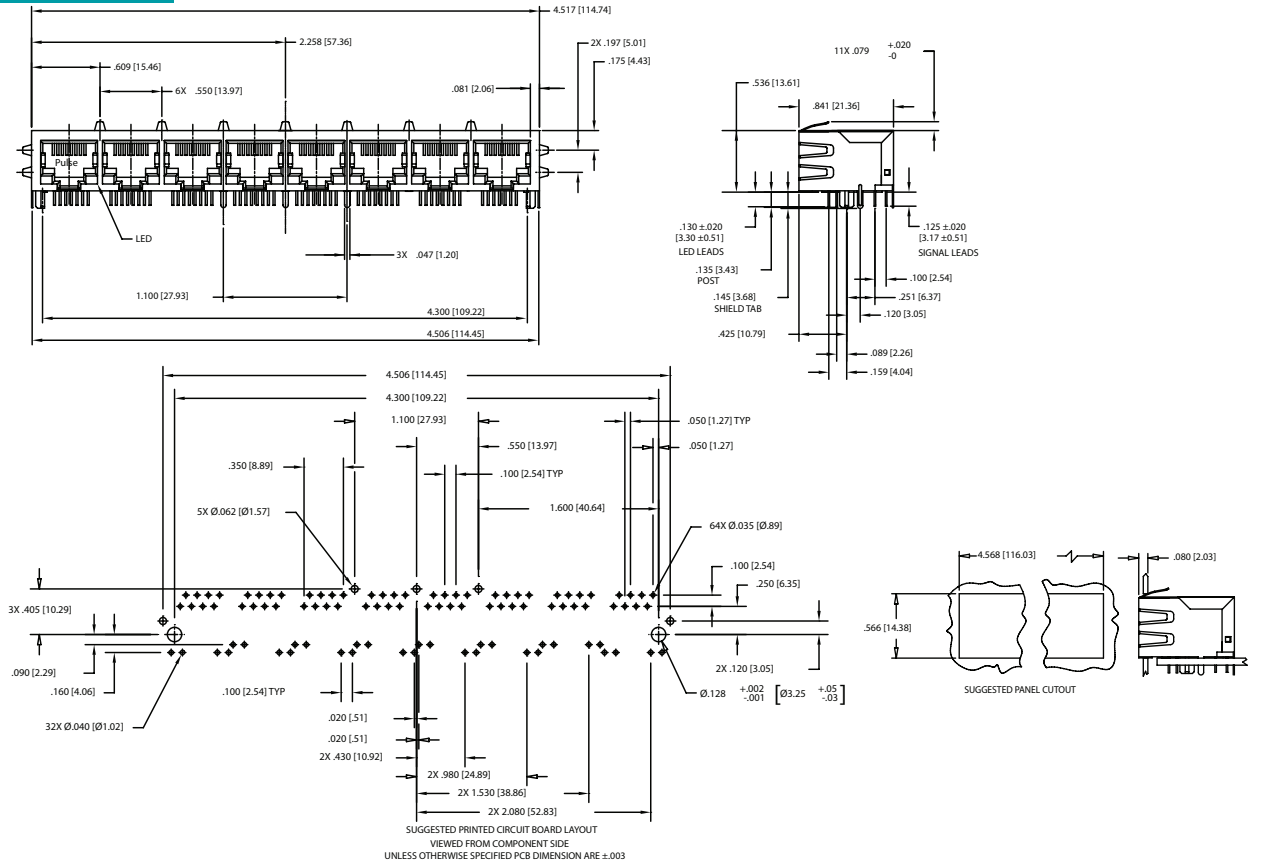
J8064E66NL



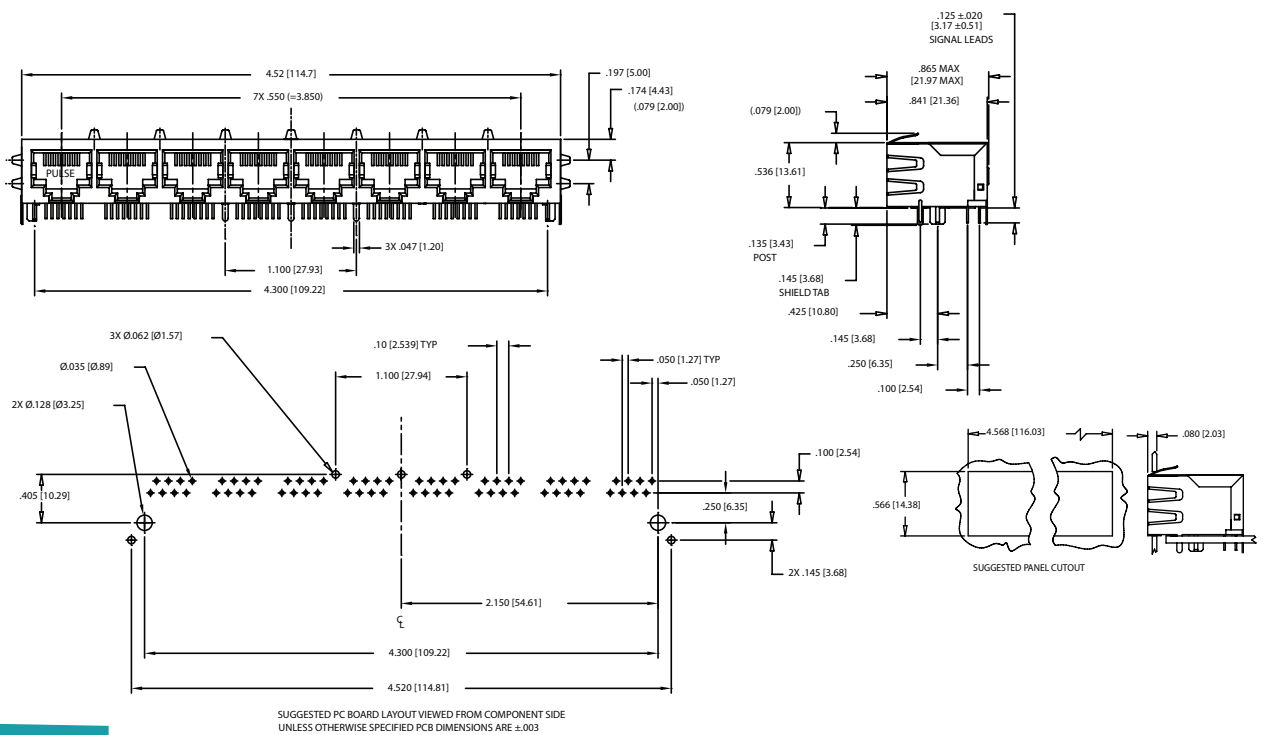
PulseJack™ 1xN Tab-Down

Mechanicals

J8064D688ANL, JX8064D688ANL



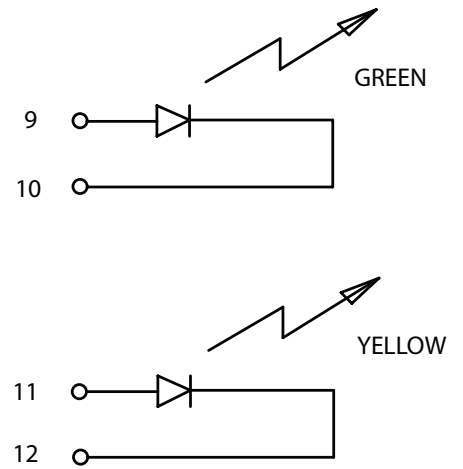
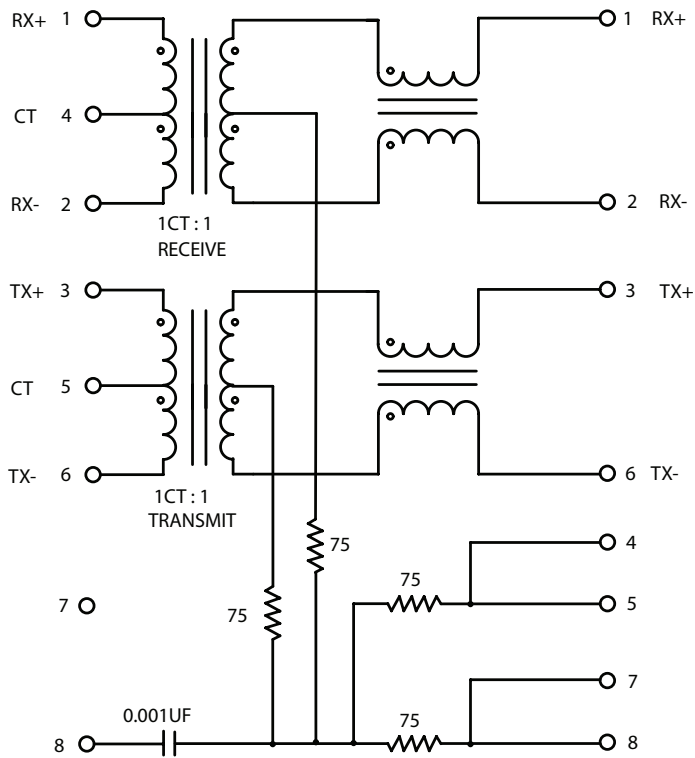
J8064E68NL



PulseJack™

1xN Tab-Down

Schematic for J8 and JX8 Series



NOTE: JX80-0019NL and JX80-0022NL are Gree/Green

Configuration	1x2	1X4	1X6	1X8
Part Number	J8064D628ANL J8064E62NL	J8064D648ANL J8064E64NL	J8064D668ANL J8064E66NL	J8064D688ANL J8064E68NL
Weight	10.9 grams	21.8 grams	32.7 grams	43.6 grams
Tray	45/Tray	15/Tray	15/Tray	10/Tray

Mouser Electronics

Authorized Distributor

Click to View Pricing, Inventory, Delivery & Lifecycle Information:

Pulse:

[J8064D688ANL](#) [J8064D668ANL](#) [J8064E64NL](#) [J8064E68NL](#) [J8064E66NL](#) [JX80-0022NL](#)