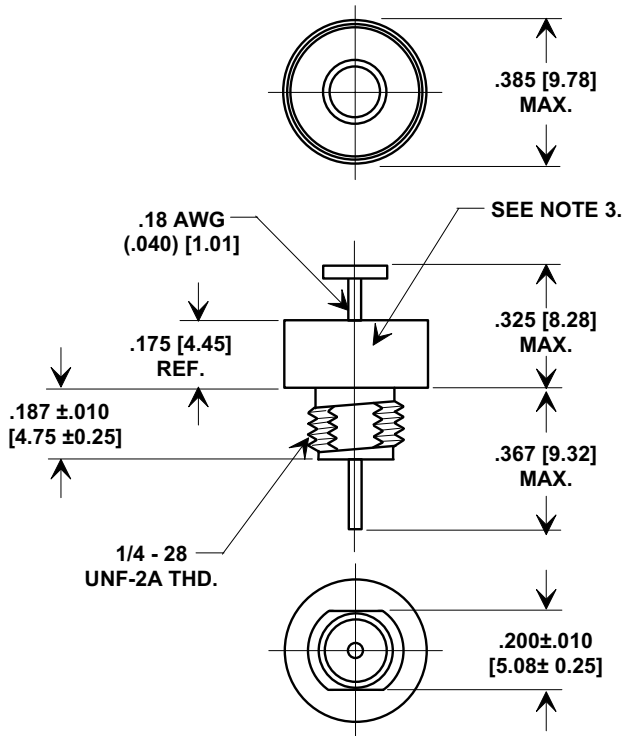
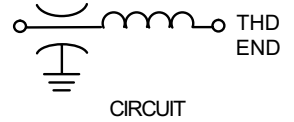
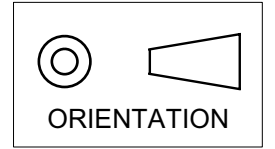


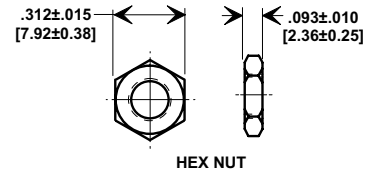
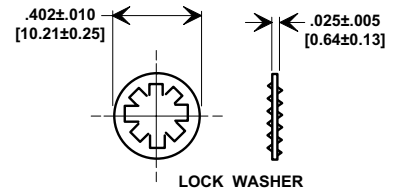
Electrical Testing
per Tusonix standard
test plans and Mil-Std-202
Test Methods.

MARKETING SALES DRAWING
DIMENSIONS IN INCHES - DO NOT SCALE THIS DRAWING
DIMENSIONS IN METRIC - []



NOTES:

1. TUSONIX STANDARD PART NUMBER: 4600-050.
TUSONIX RoHS COMPLIANT PART NUMBER: 4600-050 LF.
CUSTOMER MUST SPECIFY STANDARD OR RoHS PART NUMBER WHEN ORDERING.
2. MATERIALS:
BUSHING - TIN PLATED STEEL.
LEAD STANDARD PART; SOLDER PLATED COPPER.
RoHS PART; SILVER PLATED COPPER.
NUT - TIN PLATED BRASS.
L"WASHER - TIN PLATED PHOSPHOR BRONZE.
3. PART MARKING: TRADEMARK AND VARIATION NUMBER.
STANDARD PART: BLACK INK. RoHS PART: GREEN INK.
4. MOUNTING TORQUE: 8 lb - ins. max.
5. DCR - .01 max.
6. MAX. SOLDER TEMPERATURE 500°F.



MIN. CAP (UF)	DWV (VDC)	I.R. MIN. @ 100 (VDC.)	WORKING VOLTAGE D.C.		CURRENT DC (AMPS)	MIN. NO LOAD INSERTION LOSS (dB) @ 25°C PER MIL-STD-220					TEMP. CHARAC.	
			85°C	125°C		30 KHz	100 KHz	300 KHz	1 MHz	10 MHz		1 GHz
1.4	300	10 G	100	70	15	15	25	34	44	60	70	X7W

REVISION RECORD Original Release C.O. 6769 METRIC DIMS & NOTES ADDED. E.C. 7-17-92 6789 WVDC REVISED 100 & 70 WERE 80 & 50. L.E. 10-26-92 6992 RDN TO COMP FMT. S.M. 02-14-02 20020213-4-03 WORKING VOLTAGE REV'D 100, 70 WERE 80, 50 & TEMP. CHARAC. ADDED 20020903-1-02 ADDED NOTE S 1 & 3. REVISED NOTE 2. S.M. 06-24-05 20050608-2-02	--TOLERANCES-- Unless Otherwise Specified		Title COAXIAL BROADBAND - "C"	
	DECIMAL ±	ANGLES ±	Drawn S.M. 02-14-02	Scale 2 X
	TUSONIX TUCSON, ARIZONA		Approved T.C. 02-14-02	
	A	4600-050		

X-2015 Rev-0

Mouser Electronics

Authorized Distributor

Click to View Pricing, Inventory, Delivery & Lifecycle Information:

[Tusonix / CTS:](#)

[4600-050LF](#)