

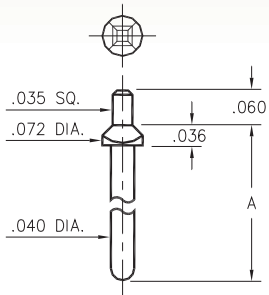
MALE PCB PINS

PRINTED CIRCUIT PINS

8600/8954/8955

8XXX-X-05-XX-00-00-03-0

Square press-fit in .043 plated through-hole

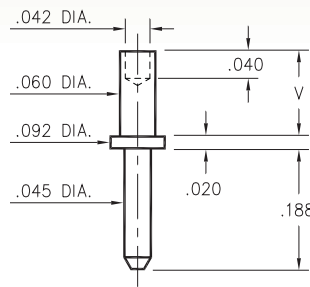


Basic Part Number	Pin Length A
8600-0	.400
8600-1	.850
8600-2	1.200
8954-0	.136
8955-0	.655

3159

3159-X-00-XX-00-00-08-0

Swage mount in .064 hole

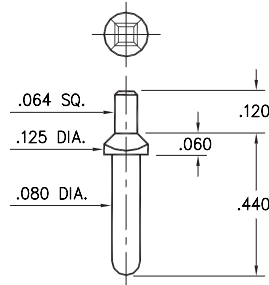


Basic Part Number	Board Thickness	Length V
3159-1	.031	.062
3159-2	.062	.094
3159-3	.094	.125
3159-4	.125	.156

8952

8952-0-05-XX-00-00-03-0

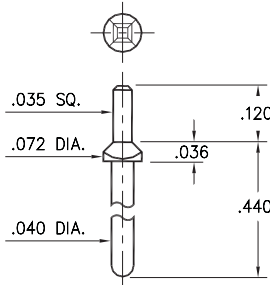
Square press-fit in .087 plated through-hole



8953

8953-0-05-XX-00-00-03-0

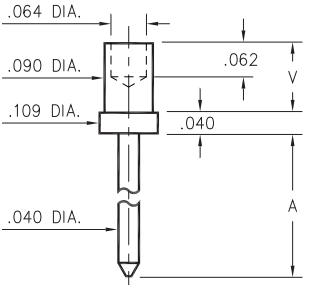
Square press-fit in .047 plated through-hole



3230

3230-X-00-XX-00-00-08-0

Swage mount in .094 hole



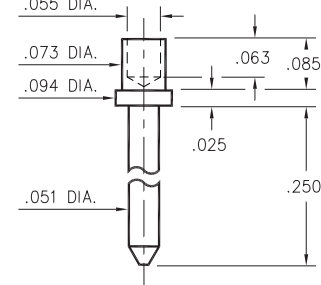
Basic Part Number	Board Thickness	Length A	Length V
3230-1	.031	.202	.065
3230-2	.062	.228	.095
3230-3	.094	.258	.125
3230-4	.125	.288	.155

3146

3146-2-00-XX-00-00-08-0

Swage mount in .076 hole

For a .062 thick board

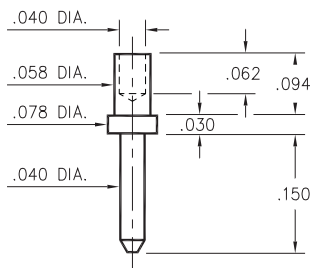


3142

3142-2-00-XX-00-00-08-0

Swage mount in .062 hole

For a .062 thick board

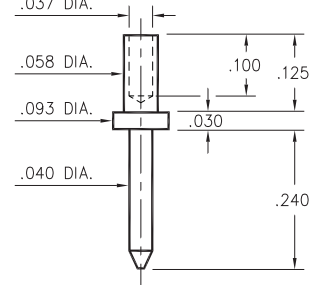


3232

3232-3-00-XX-00-00-08-0

Swage mount in .062 hole

For a .094 thick board

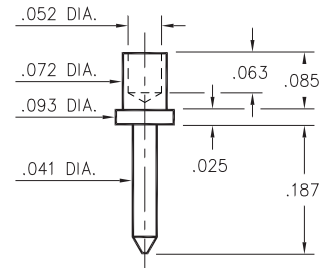


3145

3145-2-00-XX-00-00-08-0

Swage mount in .076 hole

For a .062 thick board



SPECIFICATIONS:

Pin Material: Brass Alloy 360, 1/2 Hard
(Except swage pins which are annealed)

Dimensions: Inches

Tolerances On: Lengths: $\pm .005$
Diameters: $\pm .002$
Angles: $\pm 2^\circ$



ORDER CODE: XXXX - X - 0X - XX - 00 - 00 - XX - 0

BASIC PART #

SPECIFY PIN FINISH:

- 01 200 μ " TIN/LEAD OVER NICKEL
- ◆ 80 200 μ " TIN OVER NICKEL (RoHS)
- ◆ 15 10 μ " GOLD OVER NICKEL (RoHS)
- ◆ 21 20 μ " GOLD OVER NICKEL (RoHS)
- ◆ 34 50 μ " GOLD OVER NICKEL (RoHS)



Mouser Electronics

Authorized Distributor

Click to View Pricing, Inventory, Delivery & Lifecycle Information:

Mill-Max:

[8600-0-05-01-00-00-03-0](#) [3159-4-00-01-00-00-08-0](#) [3159-3-00-01-00-00-08-0](#) [3159-2-00-01-00-00-08-0](#) [3159-1-00-01-00-00-08-0](#) [3146-2-00-01-00-00-08-0](#) [3145-2-00-01-00-00-08-0](#) [3142-2-00-01-00-00-08-0](#) [3159-4-00-80-00-00-08-0](#) [3159-3-00-80-00-00-08-0](#) [3159-2-00-80-00-00-08-0](#) [3159-1-00-80-00-00-08-0](#) [3146-2-00-80-00-00-08-0](#) [3145-2-00-80-00-00-08-0](#) [3142-2-00-80-00-00-08-0](#) [3142-2-00-21-00-00-08-0](#) [3142-2-00-34-00-00-08-0](#) [3145-2-00-15-00-00-08-0](#) [3145-2-00-21-00-00-08-0](#) [3145-2-00-34-00-00-08-0](#) [3146-2-00-15-00-00-08-0](#) [3146-2-00-34-00-00-08-0](#) [3159-1-00-15-00-00-08-0](#) [3159-1-00-21-00-00-08-0](#) [3159-1-00-34-00-00-08-0](#) [3159-2-00-15-00-00-08-0](#) [3159-2-00-21-00-00-08-0](#) [3159-2-00-34-00-00-08-0](#) [3159-3-00-15-00-00-08-0](#) [3159-3-00-21-00-00-08-0](#) [3159-3-00-34-00-00-08-0](#) [3159-4-00-15-00-00-08-0](#) [3159-4-00-21-00-00-08-0](#) [3159-4-00-34-00-00-08-0](#) [3232-3-00-15-00-00-08-0](#) [8600-2-05-34-00-00-03-0](#) [3230-1-00-00-00-00-08-0](#) [8952-0-05-00-00-00-03-0](#) [3159-2-00-00-00-00-08-0](#) [3159-1-00-00-00-00-08-0](#) [3230-3-00-00-00-00-08-0](#) [8953-0-05-00-00-00-03-0](#) [3159-3-00-00-00-00-08-0](#) [8600-0-05-00-00-00-03-0](#) [3142-2-00-00-00-00-08-0](#) [3230-4-00-00-00-00-08-0](#) [3159-4-00-00-00-00-08-0](#) [8954-0-05-00-00-00-03-0](#) [3146-2-00-00-00-00-08-0](#) [3230-2-00-00-00-00-08-0](#) [8955-0-05-00-00-00-03-0](#) [3145-2-00-00-00-00-08-0](#) [3232-3-00-00-00-00-08-0](#)