

**POWER DISCRETES**
**Description**

Quick reference data

$$V_R = 200 - 1000 \text{ V}$$

$$I_o = 1.0\text{A}$$

$$t_{rr} = 150 \text{ to } 500\text{nS}$$

$$V_F = 1.2\text{V}$$

**Features**

- ◆ Low reverse leakage current
- ◆ Hermetically sealed in Metoxilite fused metal oxide
- ◆ Low forward voltage drop

These products are qualified to MIL-PRF-19500/359

**Electrical Specifications**

Electrical specifications @  $T_A = 25^\circ\text{C}$  unless otherwise specified.

Types	$V_{RWM}$	$I_F$ (AV) @ 55°C		$I_{FSM}$	$I_{FRM}$ @ tp=8.3ms	$T_{RR}$	$V_F$ @ $I_F$		$I_R$ @ $V_{RWM}$		$C_J$ @ 5V 1MHz	$T_{STG}$	$R\theta jL$	
		-pcb mid	L = 3/8"						25°C	100°C				
	V(pk)	A	A	A	A	ns	V	A	μA	μA	pF	°C	C/W°C	C/W°C
1N4942	200	1.0	2.0	25	6.0	150	1.2	1.0	0.5	25	27	-65 to +175	3	7
1N4944	400	1.0	2.0	25	6.0	150	1.2	1.0	0.5	25	27	-65 to +175	3	7
1N4946	600	1.0	2.0	25	6.0	250	1.2	1.0	0.5	25	27	-65 to +175	3	7
1N4947	800	1.0	2.0	25	6.0	250	1.2	1.0	0.5	25	18	-65 to +175	3	7
1N4948	1000	1.0	2.0	25	6.0	500	1.2	1.0	0.5	25	18	-65 to +175	3	7

## POWER DISCRETES

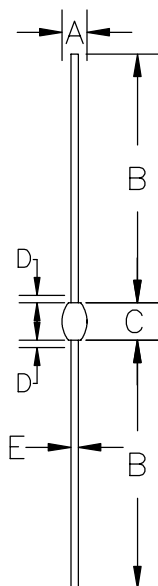
### Ordering Information

Part Number	Description
1N4942 1N4944 1N4946 1N4947 1N4948	Axial leaded hermetically sealed <sup>(1)</sup>

Note:

(1) Available in bulk or tape and reel packaging. Please consult factory for quantities.

### Outline Drawing



G2

DIM <sup>N</sup>	DIMENSIONS				NOTE
	MM		INCHES		
A	1.6	2.8	.065	.110	—
B	25.4	33.0	1.00	1.30	—
C	3.5	4.2	.140	.165	—
D	—	.80	—	.030	1
E	.66	.84	.026	.033	—

NOTE:

1. LEAD DIAMETER UNCONTROLLED OVER THIS REGION.

### Contact Information

Semtech Corporation  
Power Discrettes Products Division  
200 Flynn Road, Camarillo, CA 93012  
Phone: (805)498-2111 FAX (805)498-3804

# Mouser Electronics

Authorized Distributor

Click to View Pricing, Inventory, Delivery & Lifecycle Information:

## Semtech:

[1N4947](#) [1N4942](#) [1N4946](#) [1N4948](#) [1N4944](#) [1N4942C.TR](#) [JANTX1N4942](#) [JANTX1N4947](#) [JANTX1N4946](#)  
[JANTX1N4948](#) [JAN1N4944](#) [JAN1N4942](#) [JAN1N4946](#) [JANTX1N4944](#) [JANTXV1N4944](#) [JANTXV1N4948](#)  
[JANTXV1N4942](#) [JANTXV1N4946](#) [JANTXV1N4947](#)