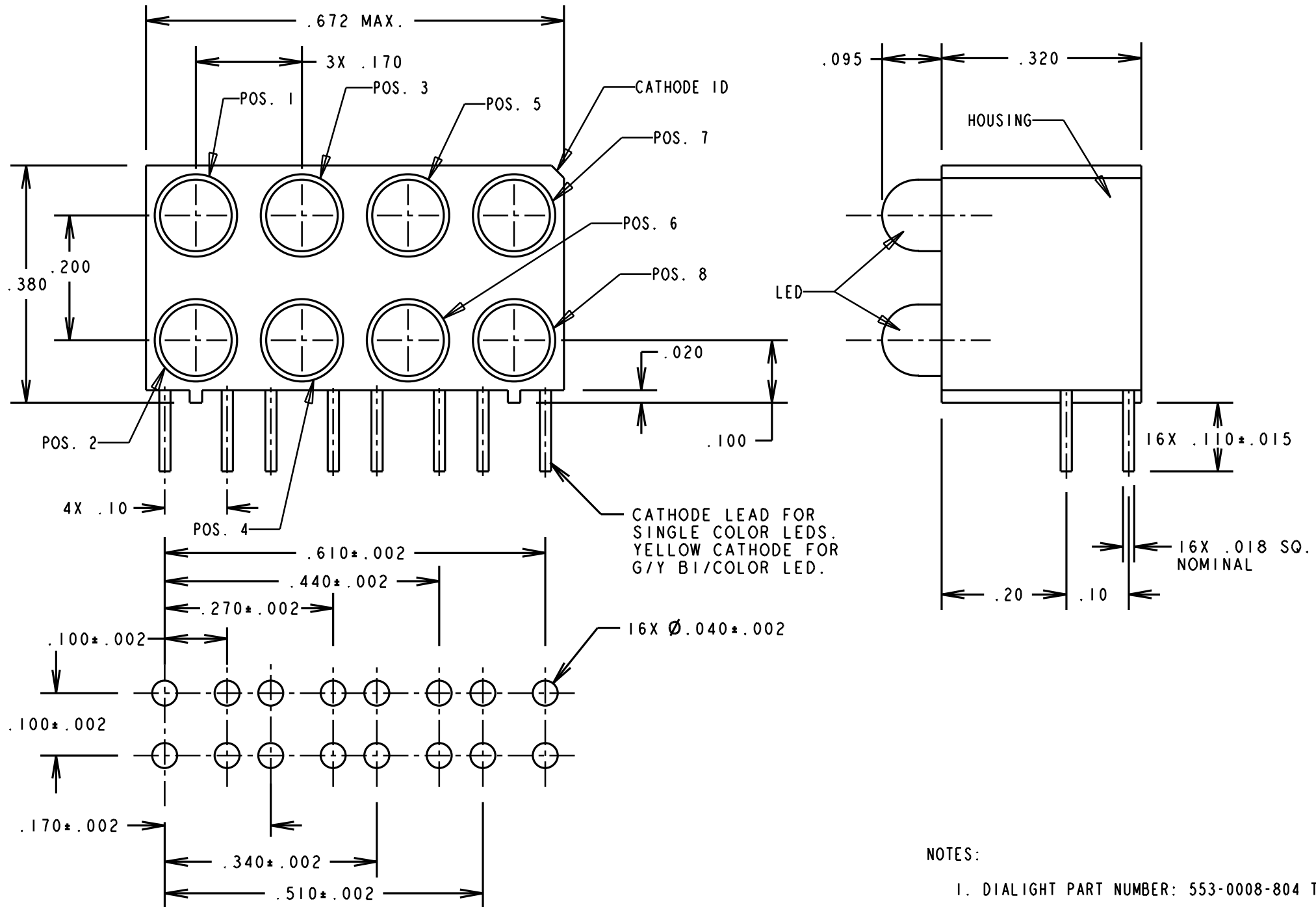


PART NUMBER	POS. 1	POS. 2	POS. 3	POS. 4	POS. 5	POS. 6	POS. 7	POS. 8
553-0008-804	GREEN	GREEN	GREEN	GREEN	GREEN	GREEN	GREEN	GREEN
553-0008-805	BLANK	BLANK	GREEN	GREEN	RED	YELLOW	BLANK	BLANK
553-0008-806	BLANK	GREEN	BLANK	GREEN	BLANK	GREEN	BLANK	GREEN
553-0008-807	GREEN	GREEN	RED	YELLOW	BLANK	BLANK	GREEN	GREEN
553-0008-808	BLANK	GREEN	BLANK	GREEN	BLANK	RED	BLANK	BLANK
553-0008-809	GREEN	G / Y	GREEN	G / Y	GREEN	G / Y	GREEN	G / Y
553-0008-810	BLANK	BLANK	GREEN	GREEN	RED	YELLOW	GREEN	BLANK

REV.	ECN NO.	REVISIONS	DRN.	CKD.	APP.	DATE
A	---	NEW RELEASE	LR	---	N.O.	01-31-95
B	---	.672 MAX. WAS .670 MAX.	LR	---	N.O.	6-13-95
C	---	REVISED ALL LED SPECS; ADDED NOTE 1.	TC			



OPERATING CHARACTERISTICS AT T<sub>A</sub> = 25°C

SYMBOL	PARAMETER	COLOR	MIN	TYP	MAX	UNITS	TEST COND.
V <sub>F</sub>	FORWARD VOLTAGE	RED		2.0	2.8	V	I <sub>F</sub> = 20 mA
		YELLOW		2.1	2.8		
		GREEN		2.1	2.8		
V <sub>R</sub>		ALL	5			V	I <sub>R</sub> = 100µA
λ <sub>PK</sub>	PEAK WAVELENGTH	RED		635		nm	MEASURED AT PEAK
		YELLOW		585			
		GREEN		565			
I <sub>V</sub>	LUMINOUS INTENSITY	RED	8.7	29		mcd	I <sub>F</sub> = 10 mA
		YELLOW	32	50			
		GREEN	10	50			

BI-COLOR LEDS  
OPERATING CHARACTERISTICS AT T<sub>A</sub> = 25°C

SYMBOL	PARAMETER	COLOR	MIN	TYP	MAX	UNITS	TEST COND.
V <sub>F</sub>	FORWARD VOLTAGE	YELLOW		2.1	2.8	V	I <sub>F</sub> = 10 mA
		GREEN		2.1	2.8		
λ <sub>PK</sub>	PEAK WAVELENGTH	YELLOW		585		nm	MEASURED AT PEAK
		GREEN		565			
I <sub>V</sub>	LUMINOUS INTENSITY	YELLOW	2.5	4.3		mcd	I <sub>F</sub> = 10 mA
		GREEN	2.5	6.3			

THIS DRAWING AND THE CONTENTS HEREIN ARE CONFIDENTIAL AND THE SOLE PROPERTY OF DIALIGHT. REPRODUCTION OF THIS DRAWING OR CONSTRUCTION OF ANY PARTS WITHIN THIS DRAWING ARE FORBIDDEN WITHOUT THE WRITTEN CONSENT OF DIALIGHT.

SCALE 5:1 ALL DIM'S IN: INCHES	DRAWING NUMBER C-15924	REV C
TOLERANCES: UNLESS OTHERWISE SPECIFIED FRACTIONS: ±1/64 DECIMALS (.XX): ±.020 DECIMALS (.XXX): ±.015	TITLE	
ANGLES: ±1° FINISH:	MATERIAL	
FSCM 83330	<b>Dialight</b>	1913 ATLANTIC AVE. MANASQUAN, N.J. 08736
	SHEET OF	FAMILY TABLE:

NOTES:  
1. DIALIGHT PART NUMBER: 553-0008-804 THRU -810

RECOMMENDED PC BOARD HOLE PATTERN

# Mouser Electronics

Authorized Distributor

Click to View Pricing, Inventory, Delivery & Lifecycle Information:

Dialight:

[553-0008-804F](#) [553-0008-810F](#) [553-0008-807F](#) [553-0008-809F](#) [553-0008-808F](#) [553-0008-805F](#) [553-0008-806F](#)