

4

3

2

1

THIS DRAWING IS UNPUBLISHED.

RELEASED FOR PUBLICATION

© COPYRIGHT

ALL RIGHTS RESERVED.

LOC

DIST


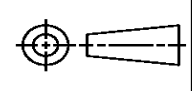
REVISIONS

P	LTR	DESCRIPTION	DATE	DWN	APVD
	B1	ECR-14-003762	14MAR14	RS	LZ

REPLACED BY OCEAN STYLE APPLICATOR PART
NUMBER 2-2151118-1

FOR REPLACEMENT PARTS FOR APPLICATOR 2047309
REFER TO ADDITIONAL PAGE(S). SPARE PARTS KIT (IF LISTED)
WILL REMAIN AVAILABLE.

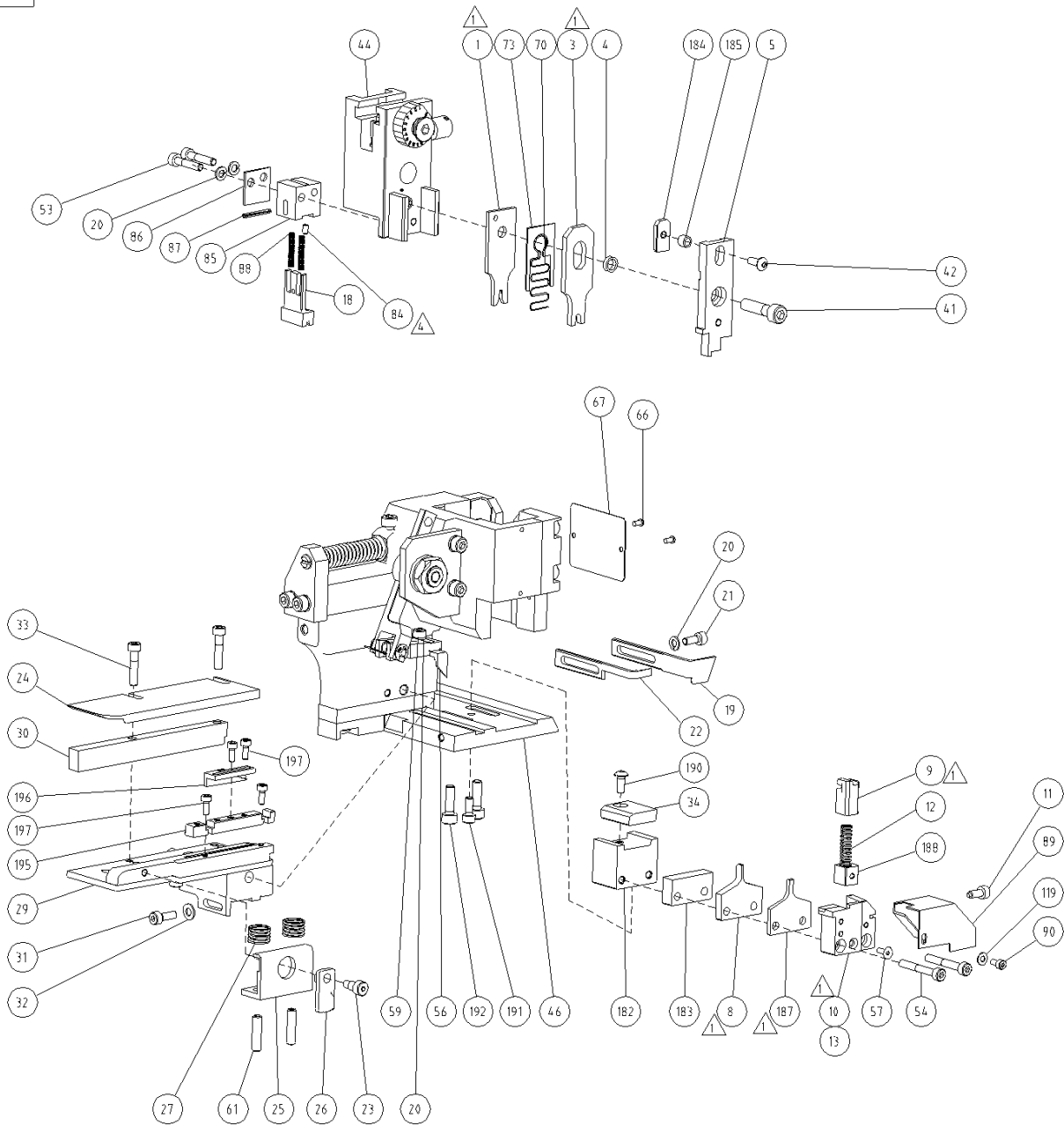
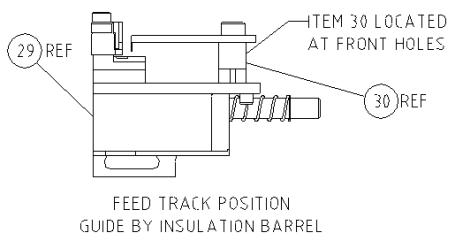
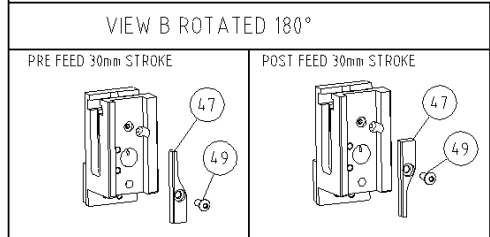
THE REPLACEMENT OCEAN STYLE APPLICATOR HAS THE
SAME TERMINATOR/PRESS INTERFACE AS APPLICATOR
2047309

THIS DRAWING IS A CONTROLLED DOCUMENT.		DWN R.SHEN		 TE Connectivity			
DIMENSIONS:		CHK LJ.ZHANG					
		APVD U.GUO		NAME HDE APPLICATOR, SIDE FEED			
		PRODUCT SPEC					
		APPLICATION SPEC					
MATERIAL		WEIGHT		SIZE A3	CAGE CODE	DRAWING NO ©- 2047309	RESTRICTED TO
FINISH		CUSTOMER ACCESSIBLE PRODUCTION DRAWING		SCALE		SHEET 1 OF 2	REV B1

THIS DRAWING IS UNPUBLISHED				
RELEASED FOR PUBLICATION				
COPYRIGHT BY TYCO ELECTRONICS CORPORATION. ALL RIGHTS RESERVED.				
PART NUMBER	REV	TERMINATOR	FEED TYPE	DESCRIPTION
2047309-1	B	LEADMAKER	MECH POST FEED	CUTS CARRIER
2047309-2	B	BENCH	MECH PRE FEED	CUTS CARRIER
2047309-6	B	LEADMAKER	MECH POST FEED	CONTINUOUS CARRIER
7-2047309-1	B	LEADMAKER	MECH POST FEED	-1 AND SPARE PARTS
7-2047309-2	B	BENCH	MECH PRE FEED	-2 AND SPARE PARTS
7-2047309-6	B	LEADMAKER	MECH POST FEED	-6 AND SPARE PARTS
7-2047309-7	A	-	-	SPARE PARTS KIT

CRIMP DATA			
TE		TERMINAL	TE CRIMP SPECS
TERMINAL NAME: GRACE INERTIA CONNECTOR TAB CONTACT (M)			
CRIMP	SIZE	TYPE	RANGE
WIRE	1.40	F	26-22 AWG or 0.13-0.34 mm ²
INSUL	2.54	F	1.3-2.0 mm
WIRE STRIP LENGTH		APPL INSTRUCTIONS	
3.0-4.0 mm		412-5724, 412-5724-1, 412-5724-2	
TERMINAL APPL SPEC		114-5306	FEED 9.7 mm
TERMINALS APPLIED			
1612335	-	-	-
-	-	-	-
-	-	-	-
-	-	-	-
-	-	-	-
WIRE SIZE	CRIMP HEIGHT	REF SETTING	
0.14 mm ²	AWG#26	0.80 ±0.05 mm	-
0.22 mm ²	AWG#24	0.85 ±0.05 mm	-
0.34 mm ²	AWG#22	0.89 ±0.05 mm	-
-	-	-	-
-	-	-	-
-	-	-	-
-	-	-	-
-	-	-	-
-	-	-	-
-	-	-	-

- △ RECOMMENDED SPARE PARTS.
2. LUBRICATE AND GREASE PER THE APPLICATOR INSTRUCTION SHEET SUPPLIED WITH THE APPLICATOR.
3. CERTAIN TERMINALS REQUIRE LUBRICATION REFER TO THE APPLICATOR INSTRUCTION SHEET FOR MORE INFORMATION.
- △ APPLY MILD LOCTITE #222 P/N 1-23419-5 TO ITEM 43.



	-	1	1	1	1	1	1	-	1633768-2	DOCUMENTATION PACKAGE	198
	-	4	4	4	4	4	4	-	18023-3	SCR, SKT HD CAP M3 X 8.0	197
	-	1	1	1	1	1	1	-	1762991-1	PLATE, STROKE ADJ	196
	-	1	1	1	1	1	1	-	1762992-1	FRONT, STRIP GUIDE	195
	-	2	2	2	2	2	2	-	2-18023-0	SCR, SKT HD CAP M5 X 16.0	192
	-	1	1	1	1	1	1	-	1-18023-1	SCR, SKT HD CAP M4 X 10.0	191
	-	1	1	1	1	1	1	-	18024-7	SCR, BTN SKT HD CAP (M4 X 10.0)	190
	-	1	1	1	1	1	1	-	1762301-1	SUPPORT, SPRING	188
1	1	1	1	1	1	1	1	-	3-1762311-6	INSULATION ANVIL, SIDE FEED	187
	-	1	1	1	1	1	1	-	1891652-1	COLLAR, INS BLOCK	185
	-	1	1	1	1	1	1	-	1891650-2	BLOCK, INS CRIMPER	184
	-	1	1	1	1	1	1	-	1762328-2	SPACER, ANVIL	183
	-	1	1	1	1	1	1	-	1762303-1	BLOCK, LOWER TOOL	182
	-	1	1	1	1	1	1	-	18027-1	WASHER, FLAT, REG M3	119
	-	1	1	1	1	1	1	-	18023-2	SCR, SKT HD CAP (M3 X 6.0)	90
	-	1	1	1	1	1	1	-	1999035-3	GUARD, CHIP	89
	-	2	2	2	2	2	2	-	1-22278-9	SPRING, HOLD DOWN	88
	-	1	1	1	1	1	1	-	4-21028-0	PIN, SLOTTED SPRING .094 X .750	87
	-	1	1	1	1	1	1	-	409461-1	PLATE RETAINING	86
	-	1	1	1	1	1	1	-	1729799-1	CARRIER HOLD DOWN	85
4	-	1	1	1	1	1	1	-	18031-1	SCR, SET, CUP POINT M3 X 5.0	84
	-	1	1	1	1	1	1	-	1891631-1	GUIDE, DEPRESSOR WIRE	73
	-	1	1	1	1	1	1	-	1729332-1	SPRING, DEPRESSOR WIRE	70
	-	1	1	1	1	1	1	-	1999134-1	DATA PLATE, APPL, HD-E	67
	-	2	2	2	2	2	2	-	21017-2	SCREW, DRIVE	66
	-	2	2	2	2	2	2	-	2-18031-8	SCR, SET, CUP POINT M5 X 20.0	61
	-	1	1	1	1	1	1	-	1-18023-0	SCR, SKT HD CAP M4 X 8.0	59
	-	1	1	1	1	1	1	-	985575-2	SCR, FLT SKT HD CAP M3 X 8.0	57
	-	1	1	1	1	1	1	-	1999075-1	FEED, PAWL	56
	-	2	2	2	2	2	2	-	1-18023-6	SCR, SKT HD CAP M4 X 30.0	54
	-	2	2	2	2	2	2	-	1-18023-4	SCR, SKT HD CAP M4 X 20.0	53
	-	1	1	1	1	1	1	-	18024-7	SCR, BTN SKT HD CAP (M4 X 10.0)	49
	-	1	1	1	1	1	1	-	1673986-1	CAM, HYBRID APPL	47
	-	1	1	1	1	1	1	-	1552100-2	APPLICATOR SUBASSEMBLY, HDE	46
	-	1	1	1	1	1	1	-	1552102-3	RAM ASSEMBLY, HDE SIDE-FEED	44
	-	1	1	1	1	1	1	-	18024-6	SCR, BTN SKT HD CAP (M4 X 8.0)	42
	-	1	1	1	1	1	1	-	3-18023-0	SCR, SKT HD CAP M6 X 25.0	41
	-	1	1	1	1	1	1	-	1-1762300-8	SUPPORT, TERMINAL	34
	-	2	2	2	2	2	2	-	1-18023-4	SCR, SKT HD CAP M4 X 20.0	33
	-	1	1	1	1	1	1	-	18027-2	WASHER, FLAT, REG M4	32
	-	1	1	1	1	1	1	-	1-18023-2	SCR, SKT HD CAP M4 X 12.0	31
	-	1	1	1	1	1	1	-	1320908-1	SPACER, STRIP GUIDE	30
	-	1	1	1	1	1	1	-	1552112-1	STRIP GUIDE ASSEMBLY	29
	-	2	2	2	2	2	2	-	1-22284-0	SPRING, COMPRESSION	27
	-	1	1	1	1	1	1	-	356835-1	LEVER, DRAG RELEASE	26
	-	1	1	1	1	1	1	-	240792-1	DRAG, TERMINAL	25
	-	1	1	1	1	1	1	-	1320928-1	PLATE, STRIP GUIDE	24
	-	1	1	1	1	1	1	-	980371-4	SCR, SKT HD SHLDR 5.0 DIA X 6.0	23
	-	1	-	1	1	-	1	-	918704-6	STRIPPER	22
	-	1	1	1	1	1	1	-	1-18023-1	SCR, SKT HD CAP M4 X 10.0	21
	-	4	4	4	4	4	4	-	18025-2	WASHER, SPRG LOCK, REG M4	20
	-	1	-	-	-	1	-	-	1-724942-7	STRIPPER	19
	-	1	1	1	1	1	1	-	2-1729753-4	HOLD DOWN, TERMINAL	18
	-	1	-	-	-	-	-	-	2047233-2	SHEAR HOLDER, FRONT(NO-CUT)	13
	-	1	1	1	1	1	1	-	3-22280-3	SPRING, COMPRESSION	12
	-	1	1	1	1	1	1	-	1729602-1	STOP, SHEAR	11
1	-	1	1	1	-	1	1	-	2047231-2	SHEAR HOLDER, FRONT	10
1	-	1	1	1	1	1	1	-	2047437-1	FLOATING SHEAR, FRONT	9
1	1	1	1	1	1	1	1	-	3-1762310-5	WIRE, ANVIL SIDE FEED	8
	-	1	1	1	1	1	1	-	1762981-1	DEPRESSOR	5
	-	1	1	1	1	1	1	-	1891658-1	CRIMPER SPACER, INSULATION	4
1	1	1	1	1	1	1	1	-	2-1762326-7	INSULATION CRIMPER	3
1	1	1	1	1	1	1	1	-	3-1762325-2	WIRE CRIMPER	1
	-77	-76	-72	-71	-6	-2	-1	UM	PART NO	DESCRIPTION	JTEM NO

Mouser Electronics

Authorized Distributor

Click to View Pricing, Inventory, Delivery & Lifecycle Information:

[TE Connectivity:](#)

[2047309-2](#)