

MATERIALS AND FINISHES

BODY, CAP: ZINC ALLOY  
PLATED NICKEL

CENTER CONTACT: PHOSPHOR BRONZE  
PLATED GOLD

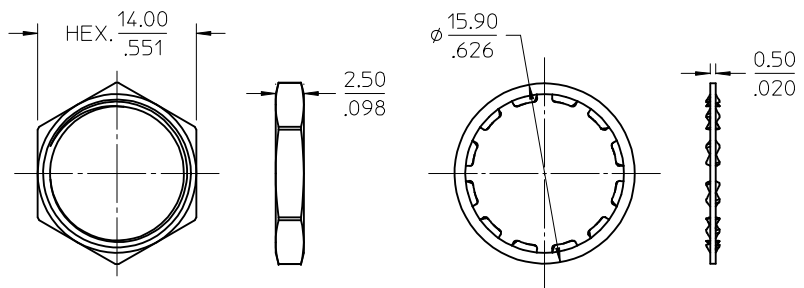
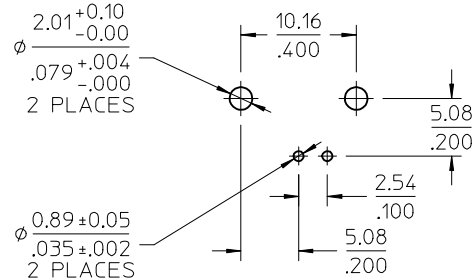
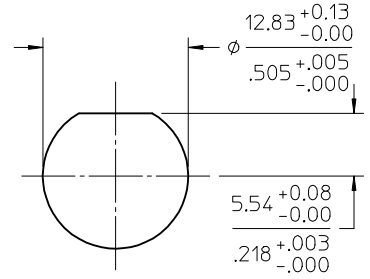
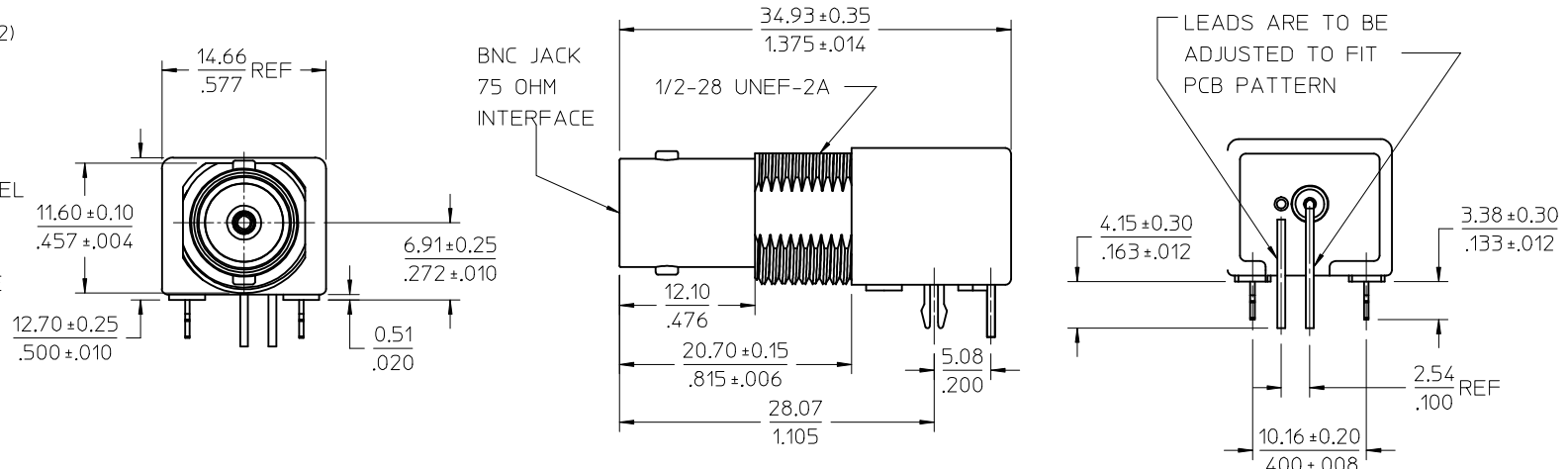
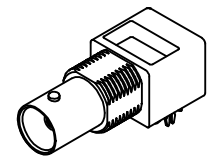
INSULATOR: POLYPROPYLENE(94V2)

BOARD LOCK: PHOSPHOR BRONZE  
PLATED TIN

SOLDER TAIL: COPPER OVER STEEL  
PLATED TIN

LOCKWASHER: PHOSPHOR BRONZE  
PLATED NICKEL

JAM NUT: BRASS  
PLATED NICKEL



RECOMMENDED MOUNTING HOLE  
PANEL THICKNESS: 5.40(.216) MAX.  
RECOMMENED MOUNTING TORQUE:  
1.36 N-m(12 INCH LBS) MAX.

RECOMMENDED PCB HOLE  
CONFIGURATION

73171-0561	ONE PER BAG
73171-0560	BULK
PART NO.	PACKAGING

PS-89675-1030	PRODUCT SPECIFICATION
SPECIFICATION	DESCRIPTION

CHG: ADD -0561	DESCRIPTION
EC NO: URF2012-0448	
DRW: BOMALLEY	2012/02/03
CHK: AZR	2012/02/03
APP: WIENER	2012/02/06
REV: A2	

QUALITY SYMBOLS	▽=0
	▽=0

GENERAL TOLERANCES (UNLESS SPECIFIED)	
4 PLACES ± --- ± ---	mm INCH
3 PLACES ± --- ± ---	
2 PLACES ± --- ± ---	
1 PLACE ± --- ± ---	
ANGULAR ± 2 °	
DRAFT WHERE APPLICABLE MUST REMAIN WITHIN DIMENSIONS	

DIMENSION STYLE	MM/IN
SCALE	DESIGN UNITS METRIC
THIRD ANGLE PROJECTION	
DRAWN BY	DATE
CWE102	2011/09/13
CHECKED BY	DATE
AZR	2012/2/1
APPROVED BY	DATE
JWIENER	2012/02/06
MATERIAL NO.	SEE TABLE
SIZE	C

TITLE	BNC JACK R/A PCB, 75 OHM DIE CAST BNC-J/RA/PCB
MOLEX INCORPORATED	
DOCUMENT NO.	SD-73171-056
SHEET NO.	1 OF 1
THIS DRAWING CONTAINS INFORMATION THAT IS PROPRIETARY TO MOLEX INCORPORATED AND SHOULD NOT BE USED WITHOUT WRITTEN PERMISSION	