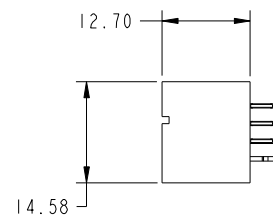
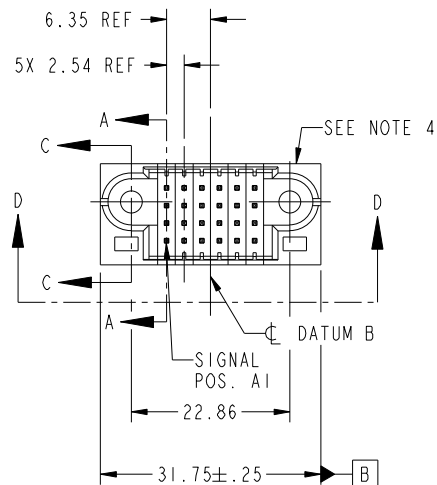



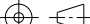



B

A

PRODUCT NO.	ROWS	SIGNAL							
		E1	1	2	3	4	5	6	E2
51952-104 _ _ NOTE (3)	D C B A								



mat'l code						tolerances unless otherwise specified				CUSTOMER		 www.fciconnect.com			
										COPY					
litr ecn no. dr date						linear				projection		title			
A DG06-0456 JULIA 11/06/06						$0.X \pm 0.3$						24S			
B DG07-0357 SH 01/16/08						$0.XX \pm 0.13$						VERTICAL PF HEADER			
						angles									
						$0^\circ \pm 2^\circ$									
						dr JULIA WANG 11/06/06						product family PwrBlade			
						enrg RYAN YUAN 11/06/06						size dwg no 213			
						chr BEER FU 11/06/06				scale 1:1		sheet			
						appd JOSEPH HSIA 11/06/06						of 4			
sheet index		revision sheet		B 1	B 2	B 3	B 4								

Pro/E

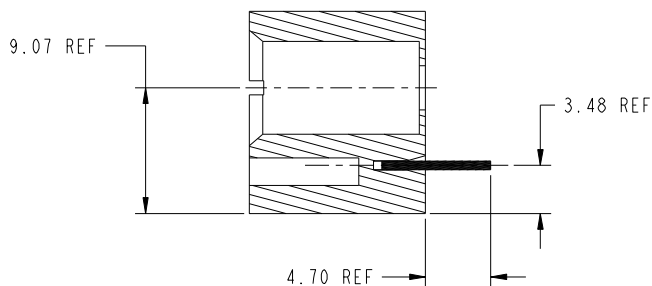
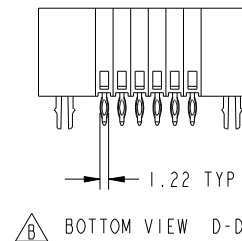
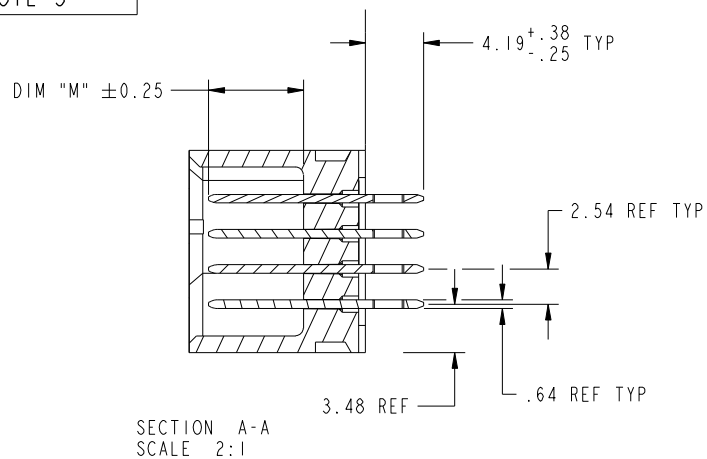
cage code	22526
-----------	-------



All rights strictly reserved. Reproduction or issue to third parties in any form whatever is not permitted without written authority from the proprietor. Property of FCI. Copyright FCI.

Tous droits strictement réservés. Reproduction ou communication à des tiers interdite sous quelque forme que ce soit sans autorisation écrite du propriétaire. Propriété de c FCI. Droits de reproduction FCI.

PRODUCT NUMBER
51952-104--
NOTE 3



mat'l code				tolerances unless otherwise specified		CUSTOMER		FCI	
litr	ecn no.	dr	date	linear	0.X ±0.3	COPY		www.fciconnect.com	
B					0.XX ±0.13	projection		title 24S	
				angles	0.XXX ±0.051			VERTICAL PF HEADER	
				dr	JULIA WANG 11/06/06	MM ← → scale 1:1		product family	PwrBlade
				enr	RYAN YUAN 11/06/06			size	213
				chr	BEER FU 11/06/06			dwg no	51952-104
				appd	JOSEPH HSIA 11/06/06			sheet	2 of 4
sheet index	revision sheet								





Pro/E

cage code 22526

Tous droits strictement reserves. Reproduction ou communication a des tiers interdite sous quelque forme que ce soit sans autorisation ecrite du proprietaire.
Propriete de c FCI. Droits de reproduction FCI.

[illegible]

RECOMMENDED PCB LAYOUT

mat'l code				tolerances unless otherwise specified		CUSTOMER		 www.fciconnect.com	
ltr	ecn no.	dr	date	linear	0.X ± 0.3		COPY		 title 24S VERTICAL PF HEADER
B					0.XX ± 0.13		projection		
					0.XXX ± 0.051				
				angles	0° ± 2°		 product family PwrBlade code		
				dr	JULIA WANG	11/06/06	size		dwg no 51952-104
				engr	RYAN YUAN	11/06/06	scale		
				chr	BEER FU	11/06/06	 1:1		
				appd	JOSEPH HSIA	11/06/06	A		sheet 3 of 4
sheet index		revision sheet							

cage code	22526
-----------	-------

Tous droits strictement reserves. Reproduction ou communication a des tiers interdite sous quelque forme que ce soit sans autorisation écrite du propriétaire.
Propriete de c FCI. Droits de reproduction FCI.



All rights strictly reserved. Reproduction or issue to third parties in any form whatever is not permitted without written authority from the proprietor.
Property of FCI. Copyright FCI.

PRODUCT NUMBER
51952-104-001

NOTES:

1. DIMENSIONS AND TOLERANCES ARE IN ACCORDANCE WITH
ASME Y14.5M, 1994 UNLESS OTHERWISE SPECIFIED.

CONNECTOR NOTES:

- 2 HOUSING MATERIAL: UL 94 V-0 GLASS FILLED
HIGH-TEMP THERMOPLASTIC
POWER CONTACT MATERIAL: COPPER ALLOY
SIGNAL PIN MATERIAL: COPPER ALLOY

3. PLATING:
51952-104 ,51952-104LF PLATING SPEC. WAS SHOWN IN THE PRINT OF 10064183.

- 4 MANUFACTURER'S NAME, P/N, AND DATE CODE TO APPEAR ON
THIS SURFACE.

5. PRODUCT SPECIFICATION GS-12-149.
APPLICATION SPECIFICATION BUS-20-067.

6. PACKAGED IN TRAYS.

PCB NOTES:

7. ALL HOLE DIAMETERS ARE FINISHED HOLE SIZE.

8. MOUNTING HOLES, WHERE APPLICABLE, ARE UNPLATED.


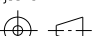

- 9 $\varnothing 1.151 \pm 0.025$ DRILLED HOLES PLATED WITH
0.008 MIN SnPb OR Sn OVER 0.03
TO 0.08 Cu PLATING TO ACHIEVE
 $\varnothing 1.02 \pm 0.07$ HOLE.

- 10 "DIM XXX" TO BE DETERMINED BY THE CUSTOMER.

- 11 CONNECTOR KEEP-OUT ZONE.

12. FOR PRESS FIT APPLICATION USE FCI CAM TOOL 430169-XXX

13. A  SYMBOL WILL BE NEXT TO ANY DIMENSION, VIEW, OR NOTE WHICH HAS BEEN
MODIFIED WITH CURRENT DRAWING REVISION.

mat'l code				tolerances unless otherwise specified				CUSTOMER				 www.fciconnect.com					
ltr	ecr no.	dr	date	linear	0.X ± 0.3				COPY				title	24S			
B					0.XX ± 0.13				projection					VERTICAL PF HEADER			
					angles	0.XXX ± 0.051											
				0° ± 2°								product family PwrBlade					
				dr		JULIA WANG	11/06/06			scale				size	dwg no		
				enrg	RYAN WANG	11/06/06			1:1				51952-104				
				chr	BEER FU	11/06/06							sheet				
				appd	JOSEPH HSIA	11/06/06							4 of 4				
sheet index		revision sheet															

cage code 22526

Mouser Electronics

Authorized Distributor

Click to View Pricing, Inventory, Delivery & Lifecycle Information:

[FCI / Amphenol:](#)

[51952-104](#) [51952-104LF](#)