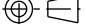


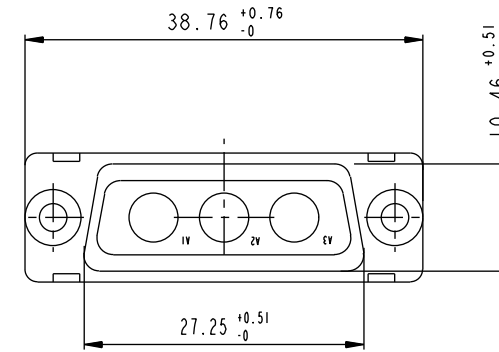
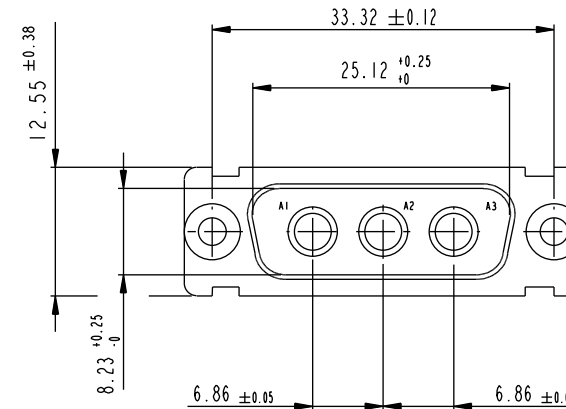
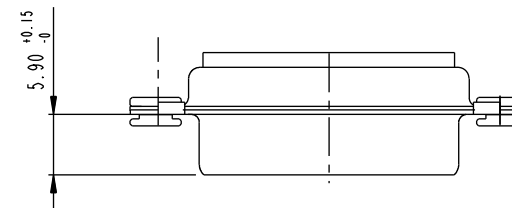


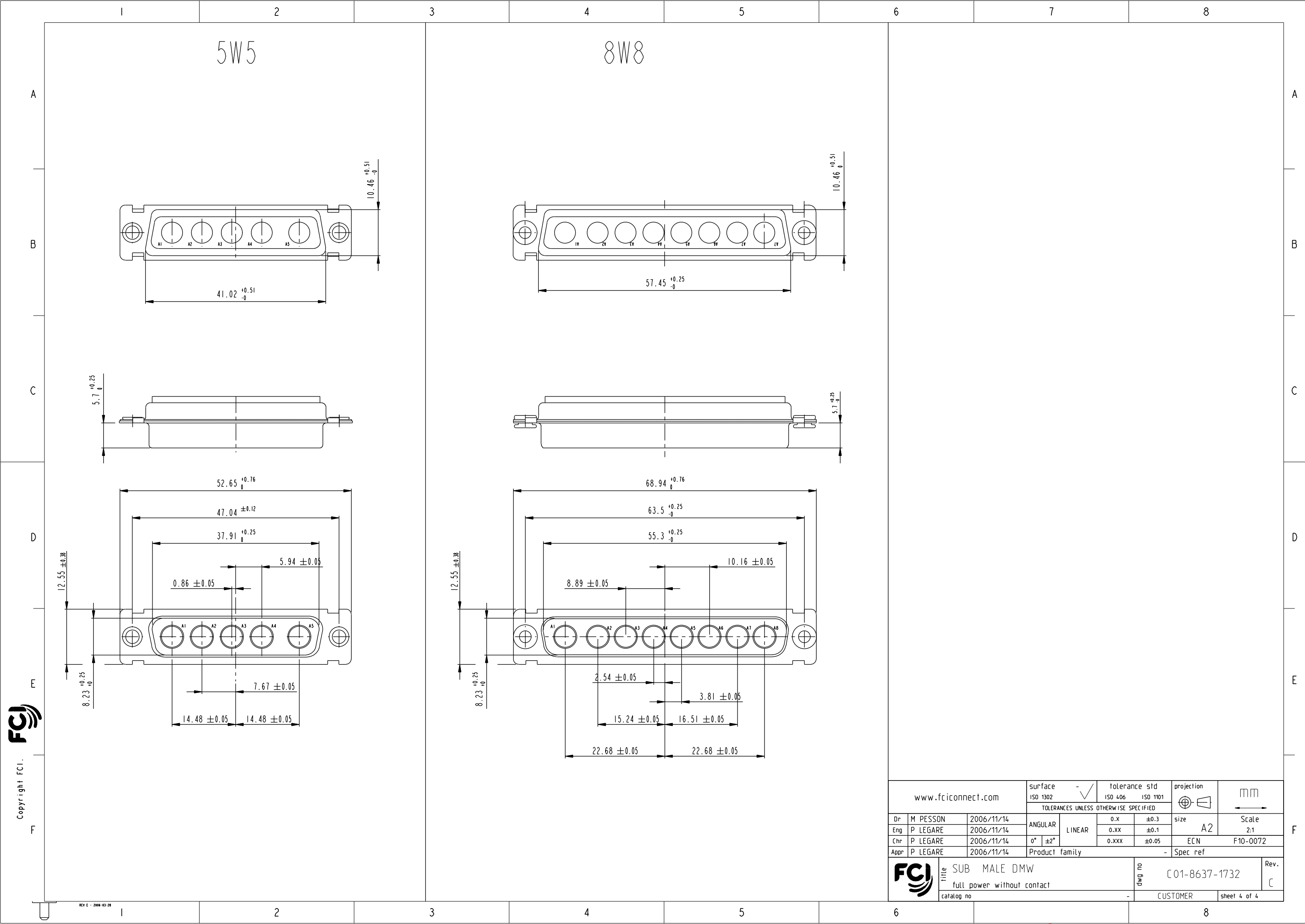
www.fciconnect.com			surface ISO 1302		tolerance std ISO 406 ISO 1101		projection 				
			TOLERANCES UNLESS OTHERWISE SPECIFIED								
Dr	M PESSON	2006/11/14	ANGULAR	LINEAR	0.X ±0.3		size A2	Scale 2:1			
Eng	P LEGARE	2006/11/14			0.XX ±0.1						
Chr	P LEGARE	2006/11/14			0.XXX ±0.05						
Appr	P LEGARE	2006/11/14	0° ±2°		ECN		F10-0072				
Product family					-		Spec ref				
			title SUB MALE DMW full power without contact			dwg no C01-8637-1732			Rev. C		
catalog no			-			CUSTOMER			sheet 2 of 4		

3W3

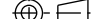




Technical drawing of a mechanical part, likely a valve or fitting, showing a cross-section. The drawing includes two dimension lines with arrows indicating measurements. The first dimension, on the left, is labeled $10.57^{+0.51}_{-0}$. The second dimension, on the right, is labeled $11.93^{+0.6}_0$. The part features a central vertical axis, a flange-like structure, and a hatched section on the right side.





Copyright FCI.

www.fciconnect.com			surface ISO 1302		- ✓ tolerance std ISO 406 ISO 1101		projection 				
			TOLERANCES UNLESS OTHERWISE SPECIFIED								
Dr	M PESSON	2006/11/14	ANGULAR	LINEAR	0.X ±0.3		size A2	Scale 2:1			
Eng	P LEGARE	2006/11/14			0.XX ±0.1						
Chr	P LEGARE	2006/11/14			0.XXX ±0.05						
Appr	P LEGARE	2006/11/14	0° ±2°				ECN		F10-0072		
			Product family					-	Spec ref		
			title SUB MALE DMW full power without contact			dwg no C01-8637-1732			Rev. C		
catalog no											

Mouser Electronics

Authorized Distributor

Click to View Pricing, Inventory, Delivery & Lifecycle Information:

[FCI / Amphenol:](#)

[DBM5W5PN](#) [DBMF5W5PN](#) [DAM3V3PN](#) [DAM3W3PN](#) [DAMF3W3PN](#) [DCM8W8PN](#) [DAML3W3PN](#) [DBMO5W5PN](#)
[DEM2V2PN](#)