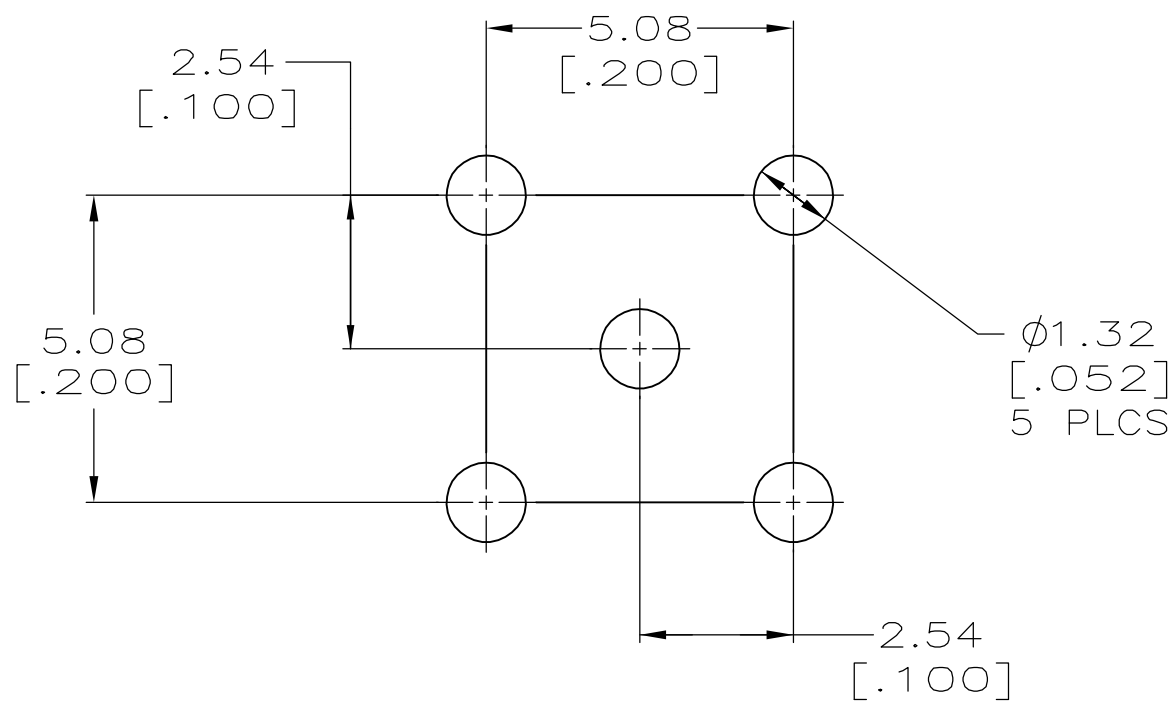
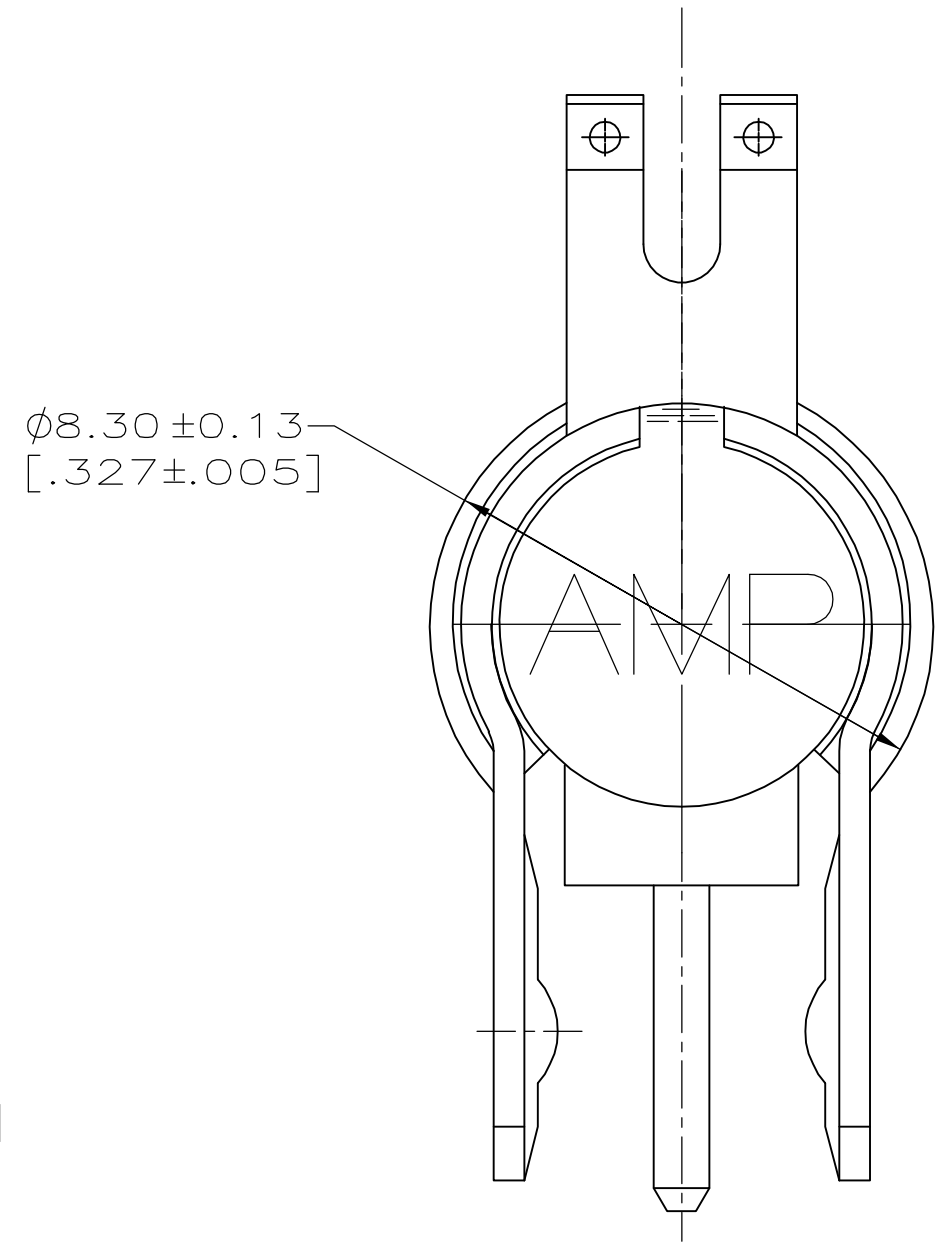
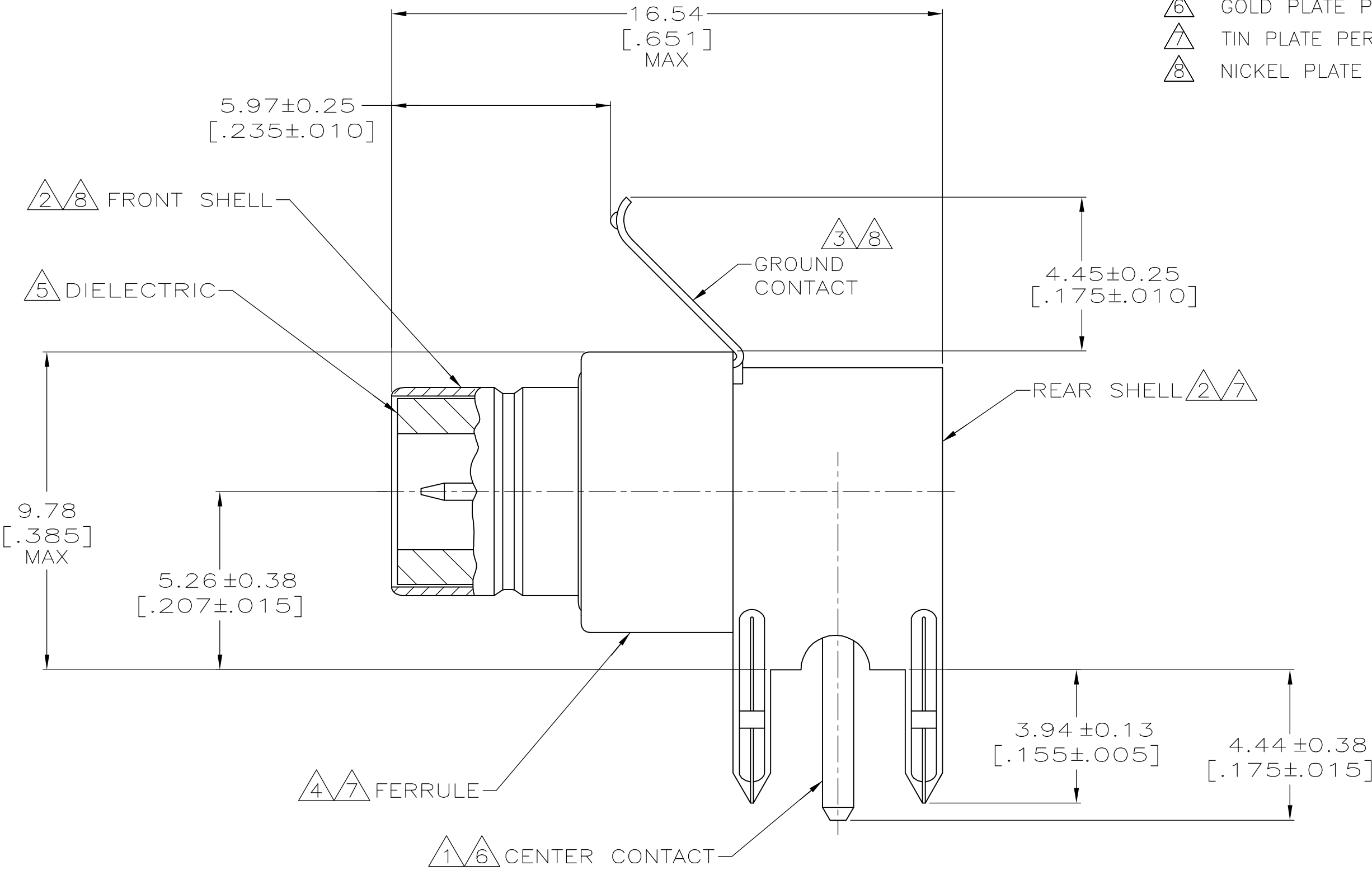


LOC	DIST	REVISIONS					
		P	LTR	DESCRIPTION	DATE	DWN	APVD
AJ	16		0	REV PER EC-0S14-0496-04	31JAN2005	LV	JGH

- 1
- BRASS PER ASTM-B-16.
- 2
- BRASS PER ASTM-B-36.
- 3
- PHOSPHOR BRONZE PER ASTM-B-103.
- 4
- COPPER PER ASTM-B-152.
- 5
- POLYMETHYLPENTENE (TPX MX004).
- 6
- GOLD PLATE PER ASTM B 488.
- 7
- TIN PLATE PER ASTM-B-545.
- 8
- NICKEL PLATE PER QQ-N-290.



RECOMMENDED PCB HOLE CONFIGURATION

THIS DRAWING IS A CONTROLLED DOCUMENT.

DIMENSIONS:
mm [inches]

MATERIAL

1 2 3 4 5

TOLERANCES UNLESS OTHERWISE SPECIFIED:

0 PLC ± -

1 PLC ± -

2 PLC ± 0.05 [.002]

3 PLC ± -

4 PLC ± -

ANGLES ± -

FINISH

6 7 8

DWN L. VARELA - 31JAN2005

CHK J. HAVENER 31JAN2005

APVD J. HAVENER 31JAN2005

PRODUCT SPEC

APPLICATION SPEC

WEIGHT -

CUSTOMER DRAWING

tyco
Electronics

Tyco Electronics Corporation
Harrisburg, PA 17105-3608

NAME

SIZE A2

CAGE CODE 00779

DRAWING NO C=5415895

RESTRICTED TO -

5415895-1

PART NUMBER

SCALE 8:1

SHEET 1 OF 1

REV 0

Mouser Electronics

Authorized Distributor

Click to View Pricing, Inventory, Delivery & Lifecycle Information:

[TE Connectivity:](#)

[5415895-1](#)