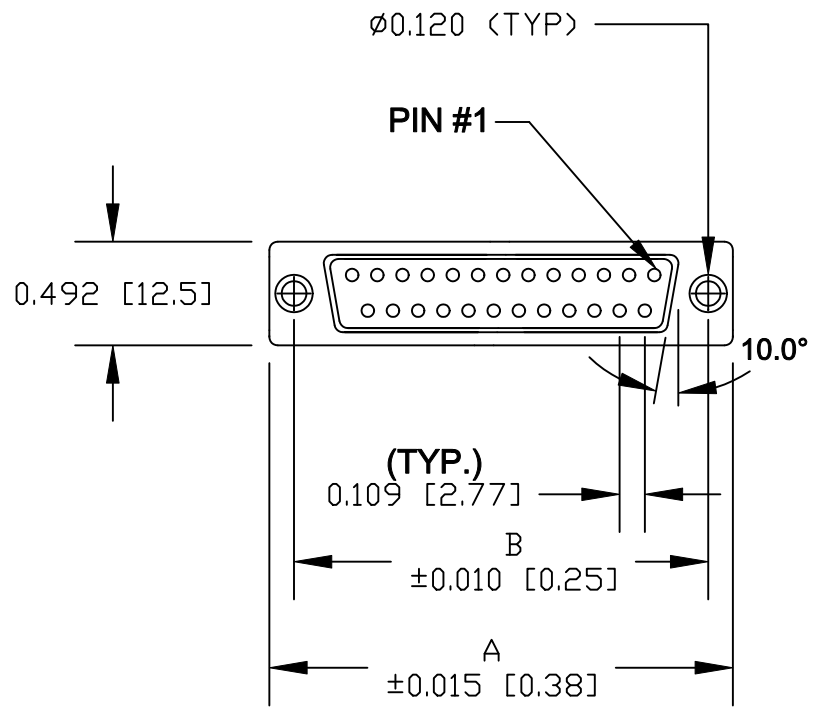
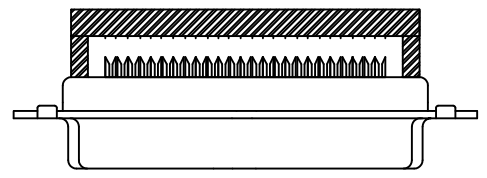
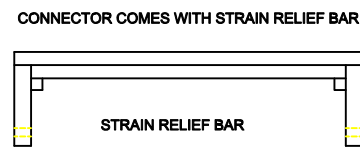
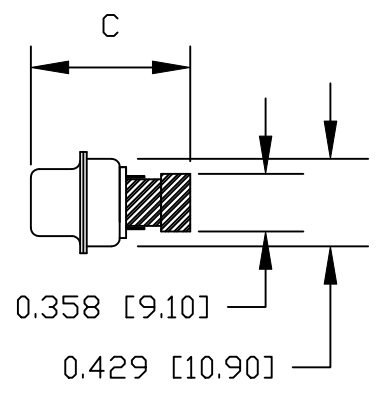


25 POSITION SHOWN FOR REFERENCE



TERMINATED



SPECIFICATIONS:

MATERIALS:

- SHELL: STEEL, TIN PLATED
- INSULATOR: UL 94V-0 RATED POLYESTER, GLASFILLED, BLACK
- CONTACTS: COPPER ALLOY

ELECTRICAL:

- CURRENT RATING: 1.5 AMP
- CONTACT RESISTANCE: 10 mOHMS MAX
- INSULTOR RESISTANCE: 5000 MOHMS MIN
- VOLTAGE: 500V AC FOR 1 MINUTE
- TEMPERATURE: -55°C TO +125°C

184AYYY-292LYY1

SERIES _____

POSITIONS _____

009 _____

015 _____

025 _____

037 _____

GENDER _____

1 = MALE

2 = FEMALE

TERMINATION _____

9 = IDC

SHELL PLATING _____

2= TIN

HARDWARE OPTIONS _____

00 = NO HARDWARE

01 = .065 4-40 CLINCH NUT BOARD SIDE

PLATING OPTIONS _____

1 = GOLD FLASH

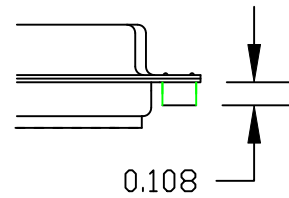
	A	B	C CLOSED	C OPEN
9	1.213	0.984	0.610	0.728
	30.81	25.00	15.50	18.50
15	1.541	1.312	0.610	0.728
	39.14	33.33	15.50	18.50
25	2.087	1.852	0.610	0.728
	53.00	47.04	15.50	18.50
37	2.729	2.500	0.610	0.728
	69.32	63.50	15.50	18.50

ACCEPTS: 28 AWG STRANDED .050" CENTER FLAT RIBBON CABLE


RoHS COMPLIANT

	THESE DRAWINGS AND SPECIFICATIONS ARE THE PROPERTY OF NorComp AND SHALL NOT BE REPRODUCED, COPIED OR USED AS THE BASIS FOR THE MANUFACTURE OF SALE OF APPARATUS WITHOUT WRITTEN PERMISSION.		DRAWN: M. SIGMON	DATE: 04-04-11
			CHECKED:	DATE:
<h1>NorComp</h1>		SCALE: 1:1	SHEET 1 OF 2	REV 1
		DWG NO. 184AYYY-292LYY1		

CLINCH-NUTS ARE 4-40 INTERNAL THREADS



01X108" (BOARD SIDE) - CN1

	THESE DRAWINGS AND SPECIFICATIONS ARE THE PROPERTY OF NorComp AND SHALL NOT BE REPRODUCED, COPIED OR USED AS THE BASIS FOR THE MANUFACTURE OF SALE OF APPARATUS WITHOUT WRITTEN PERMISSION.		DRAWN: M. SIGMON	DATE: 04-05-11
			CHECKED:	DATE:
<h1>NorComp</h1>		SCALE:	SHEET 2 OF 2	REV 1
		DWG NO. 184AYYY-292LYY1		

Mouser Electronics

Authorized Distributor

Click to View Pricing, Inventory, Delivery & Lifecycle Information:

NorComp:

[184A009-292L001](#) [184A015-292L001](#) [184A025-292L001](#) [184A037-292L001](#) [184A025-292L011](#) [184A009-292L011](#)
[184A015-292L011](#)