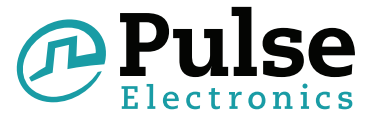


Shielded Drum Core Inductor

PA4330.XXXNLT Series



- Height:** 1.0mm Max
- Footprint:** 2.2mm x 1.8mm Max
- Current Rating:** up to 3.1A
- Inductance Range:** 0.47uH to 2.2uH
- Shielded magnetic circuit reduces leakage flux, Fe base metal core enables high saturation and metalized core termination results in excellent shock resistance

Electrical Specifications @ 25°C — Operating Temperature -40°C to 125°C

| PART NUMBER | INDUCTANCE 1MHz, 1V | RATED CURRENT | MIN. SELF-RESONANT FREQUENCY | DC RESISTANCE | | SATURATION CURRENT (20°C) | HEATING CURRENT | |
|---------------|------------------------|------------------|------------------------------------|------------------|------|------------------------------|-----------------|-----------|
| | | | | MAX. | TYP. | | 20°C Rise | 40°C Rise |
| | uH +/-20% | A | MHz | mΩ | mΩ | A | A | A |
| PA4330.471NLT | 0.47 | 3.1 | 102 | 49 | 41 | 3.8 | 2.7 | 3.1 |
| PA4330.681NLT | 0.68 | 2.8 | 77 | 65 | 57 | 3.5 | 2.5 | 2.8 |
| PA4330.102NLT | 1 | 2.35 | 70 | 90 | 75 | 3.35 | 2.05 | 2.35 |
| PA4330.222NLT | 2.2 | 1.7 | 39 | 170 | 142 | 1.8 | 1.45 | 1.7 |

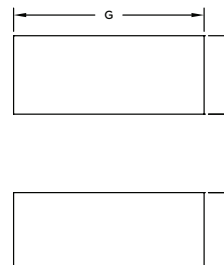
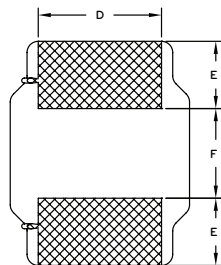
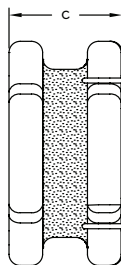
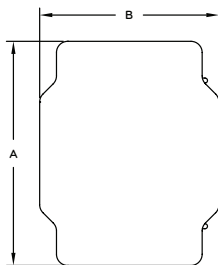
NOTES:

- Actual temperature of the component during system operation (ambient plus temperature rise) must be within the standard operating range.
- The rated current as listed is either the saturation current (20°C) or the heating current (40°C Rise) depending on which value is lower.
- The saturation current is the current at which the initial inductance drops approximately 30% at the stated ambient temperature. This current is determined by placing the component in the specified ambient environment and applying a short duration pulse current (to eliminate self-heating effect) to the component.
- The heating current is the DC current required to raise the component temperature by approximately 20°C or 40°C. Take note that the components' performance varies depending on the system conditions. It is suggested that the component be tested at the system level, to verify the temperature rise of the component during system operation.
- Maximum voltage across terminals to be limited to <25Vdc.

Mechanical

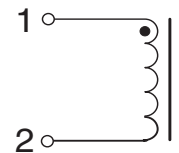
Schematic

PA4330.XXXNLT



FINAL OUTLINE

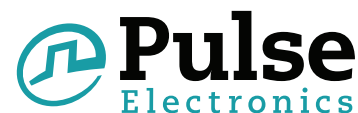
SUGGESTED PAD LAYOUT



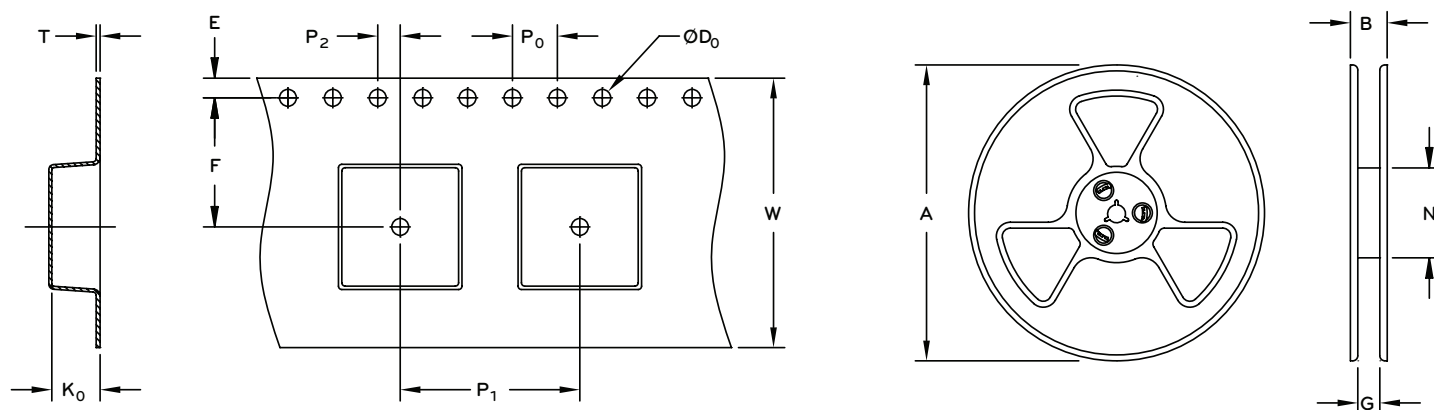
| Part Number | A (max) | B (max) | C | D | E | F | G | H | J |
|---------------|---------|---------|---------|-------|-------|-------|--------|-------|-------|
| PA4330.XXXNLT | 2.2 MAX | 1.8 MAX | 1.0 MAX | (1.5) | (0.6) | (0.8) | (1.70) | (0.7) | (0.7) |

Shielded Drum Core Inductor

PA4330.XXXNLT Series



TAPE & REEL INFO



SURFACE MOUNTING TYPE, REEL/TAPE LIST

| TYPE | REEL SIZE (mm) | | | | TAPE SIZE (mm) | | | | | | | | | QTY |
|---------------|----------------|------|-----|----|----------------|-----|----------------|---|----------------|----------------|---|------|----------------|----------|
| | A | B | G | N | E | F | D ₀ | P | P ₀ | P ₂ | W | T | K ₀ | PCS/REEL |
| PA4330.XXXNLT | Ø178 | 14.4 | 8.4 | 58 | 1.75 | 3.5 | 1.5 | 4 | 4 | 2 | 8 | 0.25 | 1.2 | 2000 |

For More Information

Pulse Worldwide Headquarters

12220 World Trade Drive
San Diego, CA 92128
U.S.A.

Tel: 858 674 8100
Fax: 858 674 8262

Pulse Europe

Zeppelinstrasse 15
71083 Herrenberg
Germany

Tel: 49 7032 7806 0
Fax: 49 7032 7806 12

Pulse China Headquarters

B402, Shenzhen Academy of
Aerospace Technology Bldg.
10th Kejinan Road
High-Tech Zone
Nanshan District
Shenzhen, PR China 518057

Tel: 86 755 33966678
Fax: 86 755 33966700

Pulse North China

Room 2704/2705
Super Ocean Finance Ctr.
2067 Yan An Road West
Shanghai 200336
China

Tel: 86 21 62787060
Fax: 86 2162786973

Pulse South Asia

135 Joo Seng Road
#03-02
PM Industrial Bldg.
Singapore 368363

Tel: 65 6287 8998
Fax: 65 6287 8998

Pulse North Asia

3F, No. 198
Zhongyuan Road
Zhongli City
Taoyuan County 320
Taiwan R. O. C.

Tel: 886 3 4356768
Fax: 886 3 4356823 (Pulse)
Fax: 886 3 4356820 (FRE)

Performance warranty of products offered on this data sheet is limited to the parameters specified. Data is subject to change without notice. Other brand and product names mentioned herein may be trademarks or registered trademarks of their respective owners. © Copyright, 2015. Pulse Electronics, Inc. All rights reserved.

Mouser Electronics

Authorized Distributor

Click to View Pricing, Inventory, Delivery & Lifecycle Information:

Pulse:

[PA4330.681NLT](#) [PA4330.471NLT](#) [PA4330.222NLT](#) [PA4330.102NLT](#)