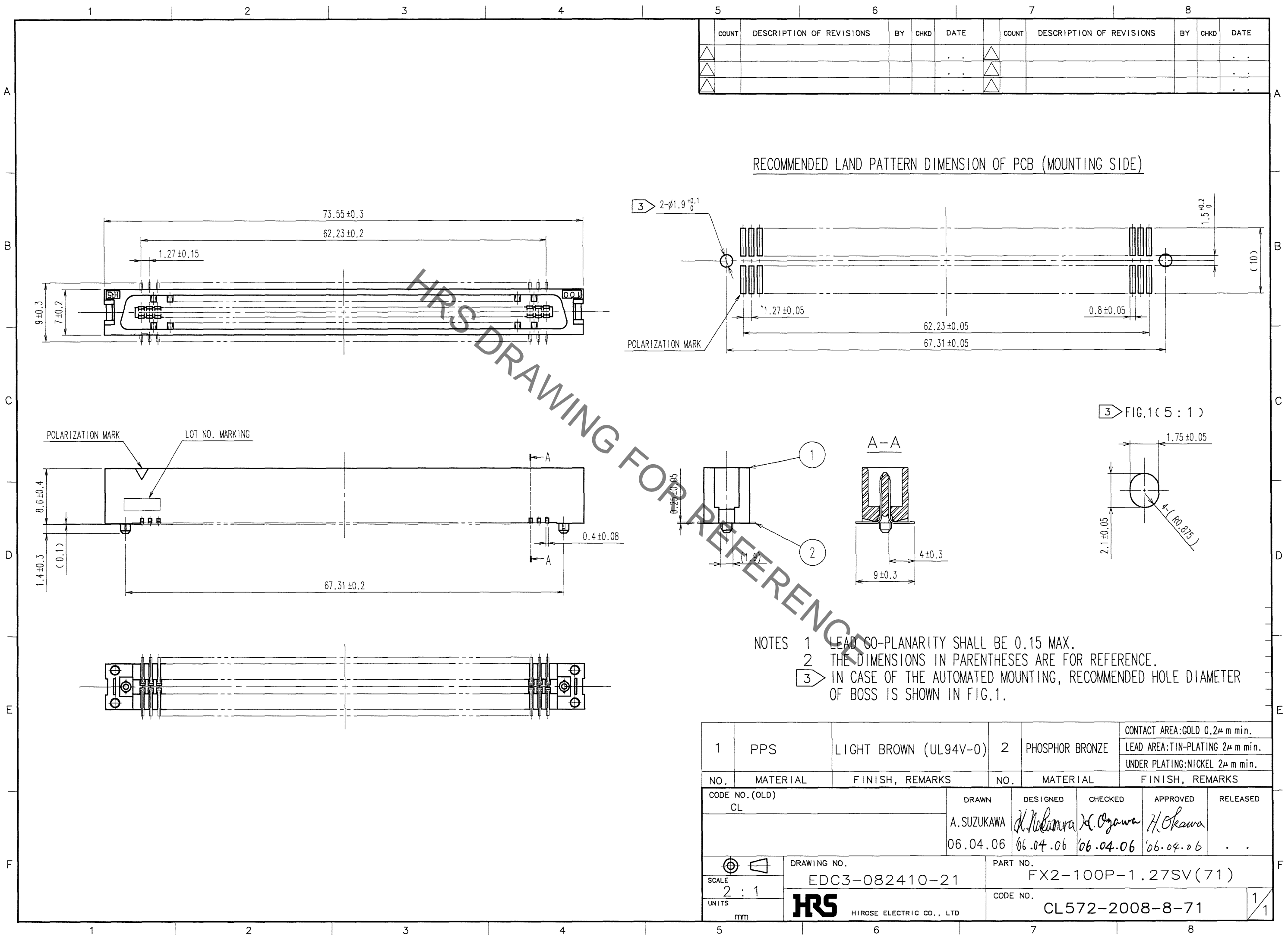


Oct.1.2020 Copyright 2020 HIROSE ELECTRIC CO., LTD. All Rights Reserved.
In case of consideration for using Automotive equipment / device which demand high reliability, kindly contact our sales window correspondents.



COUNT	DESCRIPTION OF REVISIONS	BY	CHKD	DATE	COUNT	DESCRIPTION OF REVISIONS	BY	CHKD	DATE
△					△				
△					△				
△					△				

1	PPS	LIGHT BROWN (UL94V-0)	2	PHOSPHOR BRONZE	CONTACT AREA:GOLD 0.2μ m min. LEAD AREA:TIN-PLATING 2μ m min. UNDER PLATING:NICKEL 2μ m min.
NO.	MATERIAL	FINISH, REMARKS	NO.	MATERIAL	FINISH, REMARKS
CODE NO. (OLD) CL	DRAWN A.SUZUKAWA 06.04.06		DESIGNED H.Nakamura 06.04.06	CHECKED H.Ogawa 06.04.06	APPROVED H.Okawa 06.04.06
SCALE 2 : 1	DRAWING NO. EDC3-082410-21		PART NO. FX2-100P-1.27SV(71)		
UNITS mm	HRS HIROSE ELECTRIC CO., LTD		CODE NO. CL572-2008-8-71		1/1