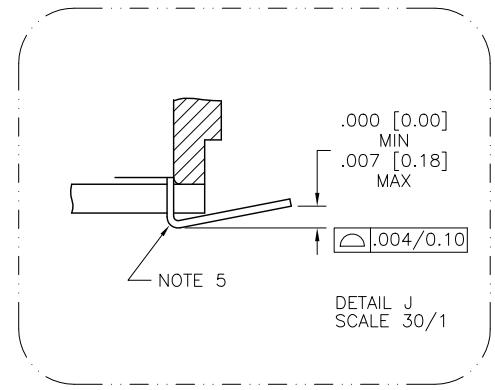
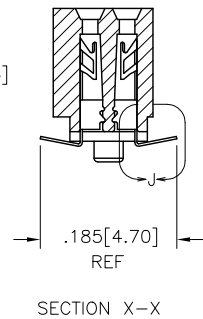
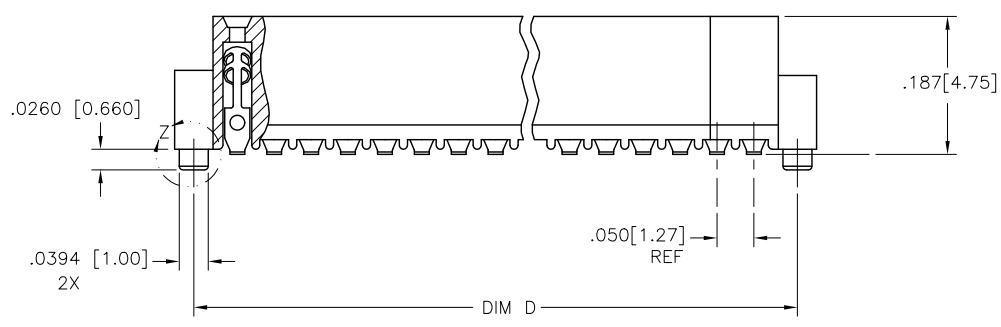
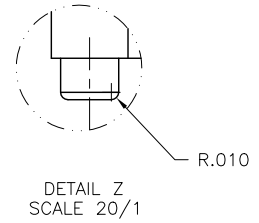
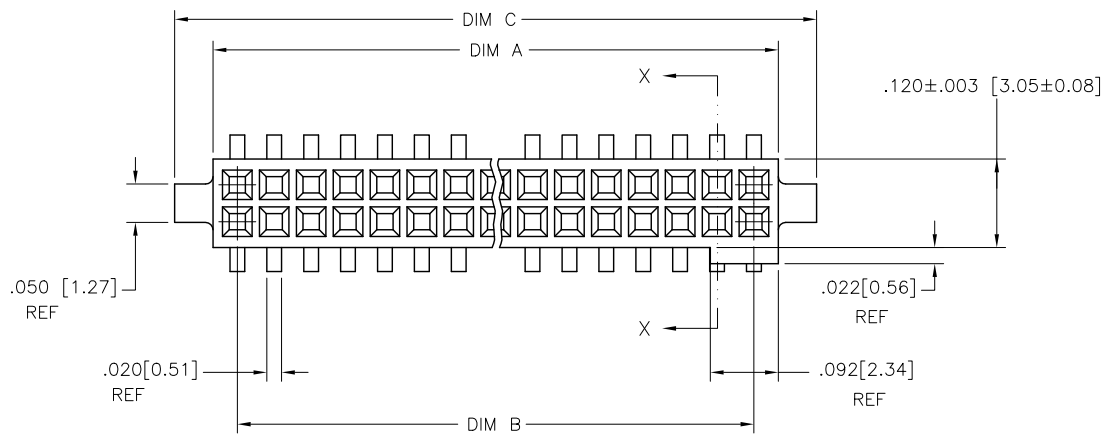


PRODUCT NUMBER
SEE TABLE



mat'l. code				surface		tolerance		projection		product family	
-				ISO 1302 ✓		ISO 406 ISO 1101				RIB CAGE	
ltr	ecn no	dr	date	tolerances unless otherwise specified						title	
J	V11874	CRG	7/26/01	angles	linear	xx ±.01/.3		INCH/MM		.050/1.27cc V.C.C. SMT	
K	M05-0123	MHT	6/07/05	σ±2'		xxx ±.005/.13		scale 4:1		w/LOC. & POL. FEATURES	
L	M06-0284	AEA	7/27/06			xxxx ±.0020/.050				dwg no	
M	M09-0058	MHT	4/04/09	dr	D. SHEAFER	02/01/93				sheet 1 of 3 size	
N	N10-0174	YO	6/17/10	engr	J. SHUEY	02/01/93				93188	
P	N11-0186	YO	6/09/11	chr	J. SHUEY	02/01/93				A3	
R	ELX-N-010208	YO	2/8/12	appd	J. SHUEY	02/01/93				type Product Customer Drawing	
sheet	revision	R	R	R							
index	sheet	1	2	3							

PRODUCT NO. NOTE 8	SIZE	DIM A	DIM B	DIM C	DIM D	SPECIAL PACKAGING	TAPE WIDTH/PITCH	PIECES PER REEL
93188-610	2 X 10	.516/13.11	.450/11.43	.620/15.75	.570/14.48	NOTE 6	24mm/12mm	750
-615	2 X 15	.766/19.46	.700/17.78	.870/22.10	.820/20.83	NOTE 6	44mm/12mm	500
-620	2 X 20	1.016/25.806	.950/24.13	1.120/28.448	1.0700/27.178	-----	-----	-----
-625	2 X 25	1.266/32.156	1.200/30.48	1.370/34.798	1.3200/33.528	-----	-----	-----
-630	2 X 30	1.516/38.506	1.450/36.83	1.620/41.148	1.5700/39.878	-----	-----	-----
-635	2 X 35	1.766/44.856	1.700/43.18	1.870/47.498	1.8200/46.228	-----	-----	-----
-640	2 X 40	2.016/51.206	1.950/49.53	2.120/53.848	2.0700/52.578	-----	-----	-----
-645	2 X 45	2.266/57.556	2.200/55.88	2.370/60.198	2.3200/58.928	-----	-----	-----
93188-650	2 X 50	2.516/63.906	2.450/62.23	2.620/66.548	2.5700/65.278	-----	-----	-----

NOTES

- ① HOUSING MATERIAL :
GLASS FILLED THERMOPLASTIC FLAME RETARDANT PER UL 94V-0
COLOR : NATURAL
- ② TERMINAL MATERIAL : BeCu
- ③ TERMINAL PLATING :
30u"/.76u MIN HARD GOLD OR GXT OVER Ni ON CONTACT ZONES.
100u"/2.54u MIN TIN OVER Ni IN SOLDERING ZONES.
OTHERWISE GOLD FLASH OR UNPLATED.
4. APPLICATION INFORMATION :
A. RECOMMENDED MOUNTING PAD PATTERN IS SHOWN IN FIGURE "A".
B. MATING PINS TO BE .0176/0.447 TO .0181/0.459 DIA.
C. MATING PIN TIPS TO BE IN TRUE POSITION TO MATING GRID WITHIN .008/0.20 DIA.
D. SUGGESTED MATING PIN LENGTH .130/3.30 ±.010/0.25.
- ⑤ LEAD TIPS TO BE ABOVE HEEL, UP TO .007/0.18 MAX.
COPLANARITY TO BE MEASURED AT LOWEST POINT (HEEL).
- ⑥ ADD "TR" TO END OF DASH NUMBER FOR TAPE AND REEL PACKAGE WITH CAP. TOOLED ONLY FOR NOTED CONNECTORS.
7. ADD "CT" TO END OF DASH NUMBER FOR CONNECTOR WITH VACUUM CAP IN TUBE.
- ⑧ ADD "LF" SUFFIX AT THE END OF PART NUMBER FOR LEAD FREE OPTION.
9. IF LF P/N THE PRODUCT MEETS EUROPEAN UNION DIRECTIVES AND OTHER COUNTRY REGULATION AS DESCRIBED IN GS-22-008.
10. THE HOUSING WILL WITHSTAND EXPOSURE TO 260°C PEAK TEMPERATURE FOR 20 SECONDS IN A CONVECTION, INFRA-RED OR VAPOR PHASE REFLOW OVEN. SEE APPLICATION NOTES/PROCEDURES IF THEY ARE AVAILABLE.
11. PRODUCT SPECIFICATION PER BUS-12-087.

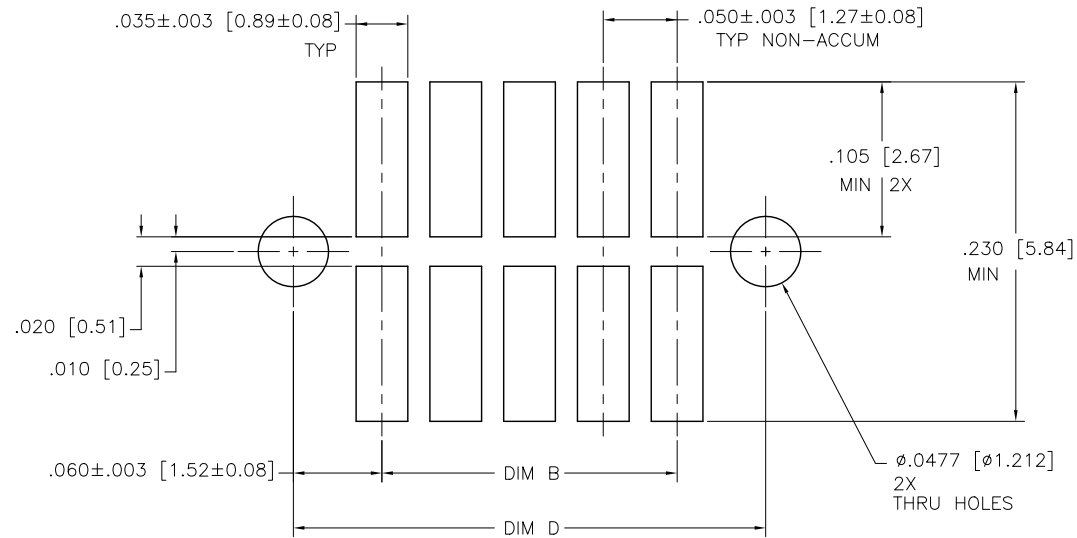


FIGURE A
RECOMMENDED
P.C.B. LAYOUT

mat'l. code		surface		tolerance		projection		product family	
-		ISO 1302 ✓		ISO 406 ISO 1101				RIB CAGE	
ltr		ecn		no		dr		date	
R									
				tolerances unless otherwise specified				title	
				angles		linear		.050/1.27cc V.C.C. SMT	
				σ±2'		xxx ±.005/.13		w/LOC. & POL. FEATURES	
				dr		D. SHEAFER 02/01/93		dwg no	
				enr		J. SHUEY 02/01/93		sheet 2 of 3	
				chr		J. SHUEY 02/01/93		size	
				appd		J. SHUEY 02/01/93		A3	
sheet		revision						type	
index		sheet						Product Customer Drawing	

1

2 3

4

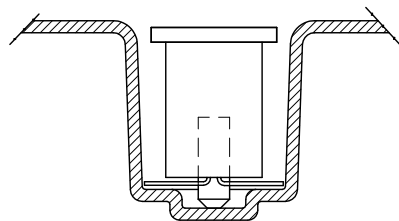
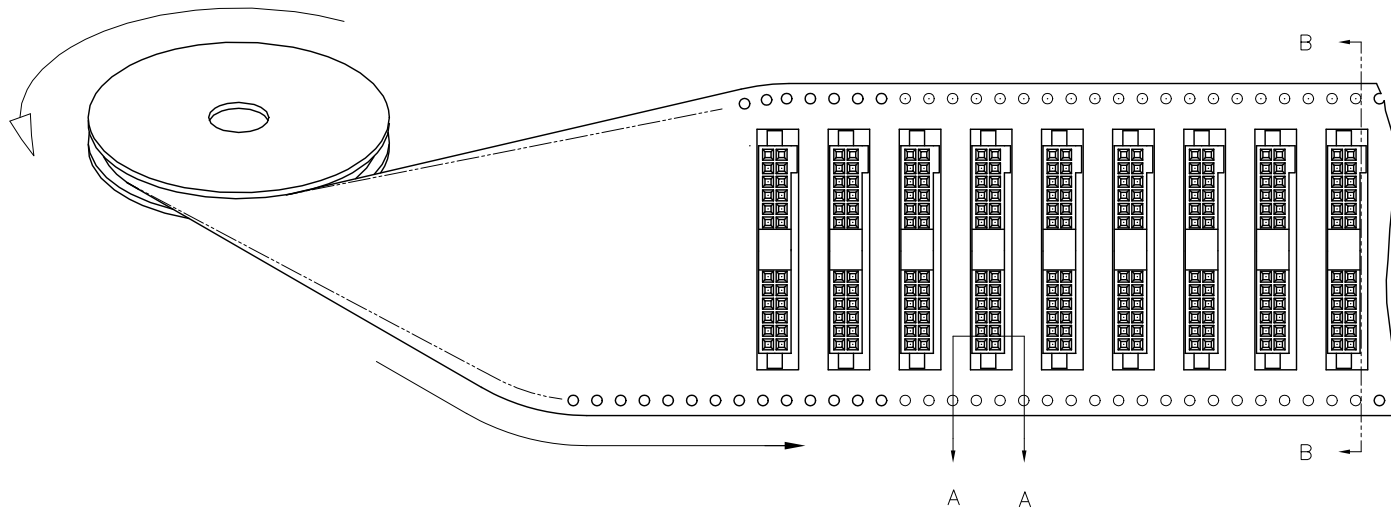
5

6

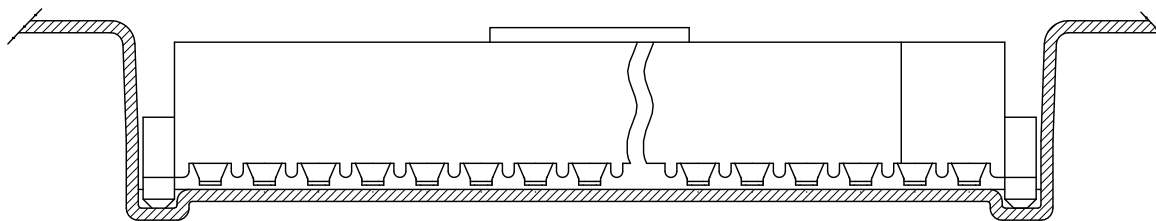
REFERENCE ONLY

TAPE WIDTH'S 32mm AND ABOVE HAS BOTH FEED TRACKS, BELOW 32mm HAS TOP FEED TRACK ONLY.

UNREELING DIRECTION



SECTION A-A



SECTION B-B

mat'l. code		surface		tolerance		projection		product family	
-		ISO 1302 ✓		ISO 406 ISO 1101				RIB CAGE	
ltr	ecn	no	dr	date	tolerances unless otherwise specified			title	
R					angles	linear	$\sigma \pm 2'$ $xx \pm .01/.3$ $xxx \pm .005/.13$ $xxxx \pm .0020/.050$	INCH/MM scale 4:1 .050/1.27cc V.C.C. SMT w/LOC. & POL. .FEATURES	
					dr	D. SHEAFER	02/01/93	dwg no	
					enr	J. SHUEY	02/01/93	sheet 3 of 3 size	
					chr	J. SHUEY	02/01/93	93188 A3	
					appd	J. SHUEY	02/01/93	type Product Customer Drawing	
sheet	revision								
index	sheet								

1

2

3

4

5

D



Copyright FCI

Mouser Electronics

Authorized Distributor

Click to View Pricing, Inventory, Delivery & Lifecycle Information:

[FCI / Amphenol:](#)

[93188-615TRLF](#)