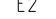
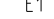
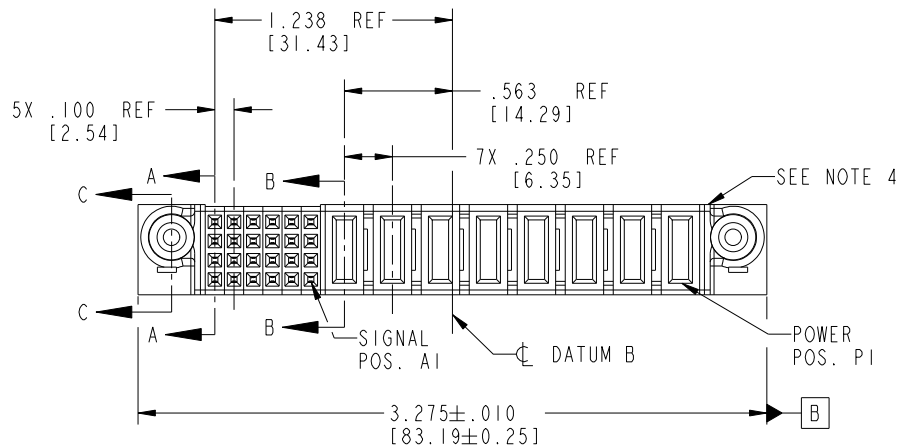




1   2																		
PRODUCT NO.	ROWS	SIGNAL								POWER								E1
		E2	6	5	4	3	2	1	P8	P7	P6	P5	P4	P3	P2	P1		
51752-006-- NOTE: 3	D C B A		F	F	F	F	F	F	PC	PC	PC	PC	PF	PF	PF	PF		



CODE	DIM "M" MATING LENGTH	CONTACT TYPE
F	N/A [N/A]	SIGNAL
PC	.042 [1.07]	POWER
PF	.092 [2.34]	POWER

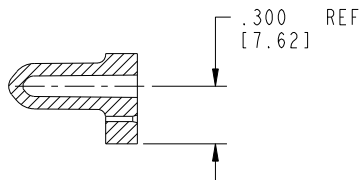
mat'l code				SEE NOTE 2		tolerances unless otherwise specified		CUSTOMER		FCI			
ltr	ecn no.	dr	date			linear		COPY		www.fciconnect.com			
A	V20522	JWS	03-14-02			.XX±.01/0.X±0.3		projection		title 8P + 24S			
B	DG05-0522	GuoJM	12/07/05			.XXX±.005/0.XX±0.13				VERTICAL PRESS-FIT RECEPTACLE			
C	DG08-0251	W D	09/13/08			.XXX±.0020/0.XXX±0.051				product family PwrBlade			
						0°±2°		INCH/MM		code 213			
								scale 1:1		size dwg no A 51752-006			
										sheet 1 of 4			
sheet index	revision sheet	C 1	C 2	C 3	C 4								

Tous droits strictement reserves. Reproduction ou communication a des tiers interdite sous quelque forme que ce soit sans autorisation écrite du propriétaire. Propriete de c FCI. Droits de reproduction FCI.

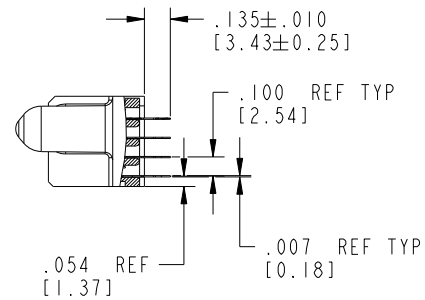


All rights strictly reserved. Reproduction or issue to third parties in any form whatever is not permitted without written authority from the proprietor. Property of FCI. Copyright FCI.

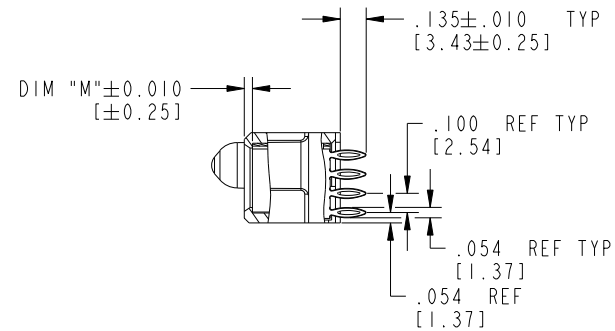
PRODUCT NUMBER  
51752-006--  
NOTE: 3



SECTION C-C



SECTION A-A



SECTION B-B

mat'l code				SEE NOTE 2		tolerances unless otherwise specified		CUSTOMER		FCI	
litr	ecn no.	dr	date	linear		.XX±.01/0.X±0.3		COPY		www.fciconnect.com	
C						.XXX±.005/0.XX±0.13		projection		title	
						.XXX±.0020/0.XXX±0.051				8P + 24S	
				angles		0°±2°		INCH/MM		VERTICAL PRESS-FIT RECEPTACLE	
				dr	J. SHAFFER	03-14-02		scale		product family PwrBlade	
				engr	M. MOSTOLLER	03-14-02		1:1		size	
				chr	M. MOSTOLLER	03-14-02				dwg no	
				appd	M. MOSTOLLER	03-14-02				A 51752-006	
sheet index	revision sheet									code	213
										sheet	2

Pro/E

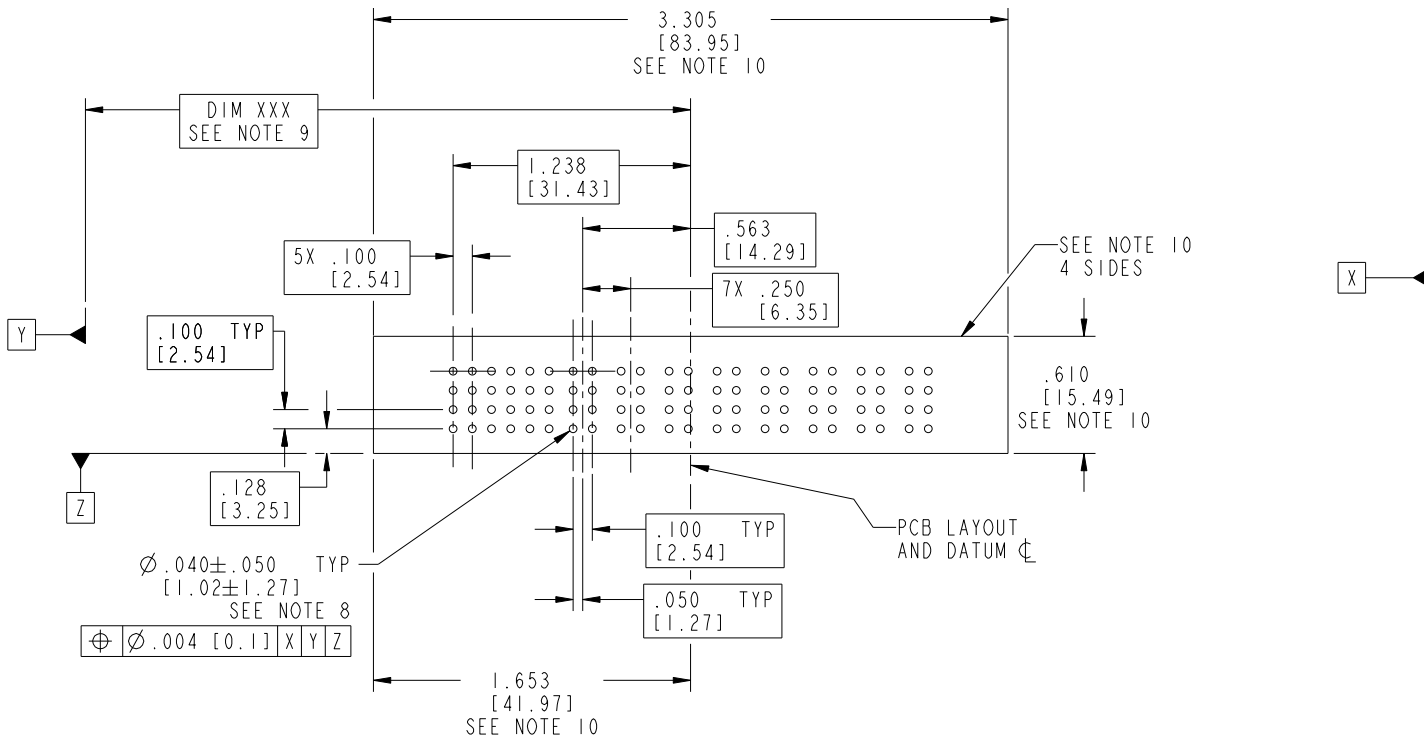
PDM: Rev: C

STATUS: Released

Printed: Dec 20, 2010



PRODUCT NUMBER  
51752-006--  
NOTE: 3



RECOMMENDED PCB LAYOUT

mat'l code				SEE NOTE 2		tolerances unless otherwise specified		CUSTOMER		FCI			
ltr	ecn no.	dr	date	linear	angles	linear	angles	COPY	projection	www.fciconnect.com			
C						.XX±.01/0.X±0.3				title 8P + 24S			
						.XXX±.005/0.XX±0.13				VERTICAL PRESS-FIT RECEPTACLE			
						.XXXX±.0020/0.XXX±0.051				product family PwrBlade			
						0°±2°				code 213			
				dr		J. SHAFFER 03-14-02				size dwg no			
				enrg		M. MOSTOLLER 03-14-02				A 51752-006			
				chr		M. MOSTOLLER 03-14-02				sheet 3			
				appd		M. MOSTOLLER 03-14-02							
sheet index		revision sheet											

Pro/E

PDM: Rev: C

STATUS: Released

Printed: Dec 20, 2010



1 | 2

3

4

PRODUCT NUMBER

51752-006\_\_  
NOTE: 3

NOTES:

1. DIMENSIONS AND TOLERANCES ARE IN ACCORDANCE WITH  
ASME Y14.5M, 1994 UNLESS OTHERWISE SPECIFIED.

CONNECTOR NOTES:

2. HOUSING MATERIAL: UL 94 V-0 GLASS FILLED HIGH-TEMP THERMOPLASTIC  
POWER CONTACT MATERIAL: COPPER ALLOY  
SIGNAL PIN MATERIAL: COPPER ALLOY

3. SEE ITEM 7 & 8 IN PRINT 10064183 FOR PLATING SPEC OF 51752-006 AND 51752-006LF RESPECTIVELY.

4. MANUFACTURER'S NAME, P/N, AND DATE CODE TO APPEAR ON THIS SURFACE.

5. PRODUCT SPECIFICATION GS-12-149.  
APPLICATION SPECIFICATION BUS-20-067.

PCB - NOTES:

6. ALL HOLE DIAMETERS ARE FINISHED HOLE SIZE.

7. MOUNTING HOLES, WHERE APPLICABLE, ARE UNPLATED.

8.  $\varnothing .0453 \pm 0.0010$  [ $1.151 \pm 0.025$ ] DRILLED HOLES PLATED WITH  
0.0003 [0.008] MIN SnPb OVER .001 [0.03]  
TO .003 [0.08] Cu PLATING TO ACHIEVE  
 $\varnothing .040 \pm .003$  [ $1.02 \pm .07$ ] HOLE.

9. "DIM XXX" TO BE DETERMINED BY THE CUSTOMER.

10. CONNECTOR KEEP-OUT ZONE.

11. A SYMBOL WILL BE NEXT TO ANY DIMENSION, VIEW, OR NOTE WHICH HAS BEEN MODIFIED  
WITH THE CURRENT DRAWING REVISION.

mat'l code				SEE NOTE 2			tolerances unless otherwise specified			CUSTOMER		
ltr	ecn no.	dr	date							COPY		
C				linear			.XX±.01/0.X±0.3			projection		
							.XXX±.005/0.XX±0.13					
				angles			.XXXX±.0020/0.XXX±0.051					
							0°±2°			INCH/MM		
				dr	J. SHAFFER	03-14-02				scale		
				engr	M. MOSTOLLER	03-14-02				1:1		
				chr	M. MOSTOLLER	03-14-02						
				appd	M. MOSTOLLER	03-14-02						
sheet index		revision sheet										



www.fciconnect.com

title 8P + 24S  
VERTICAL PRESS-FIT RECEPTACLE

product family PwrBlade code 213  
size dwg no 51752-006 sheet 4

A

A

B

B

1 | 2

Pro/E

PDM: Rev: C

STATUS: Released

Printed: Dec 20, 2010

# Mouser Electronics

Authorized Distributor

Click to View Pricing, Inventory, Delivery & Lifecycle Information:

[FCI / Amphenol:](#)

[51752-006](#) [51752-006LF](#)