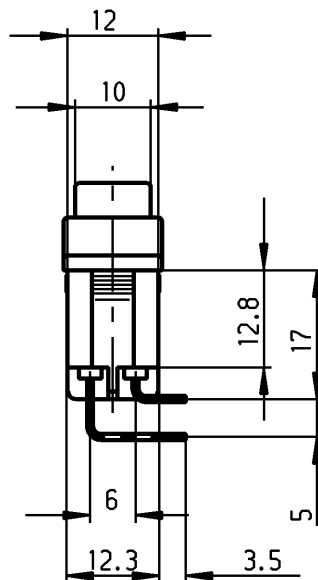
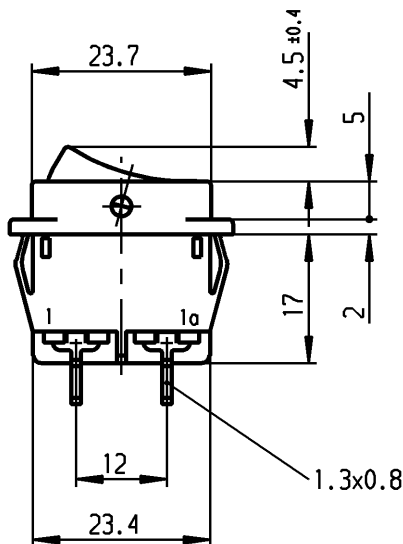
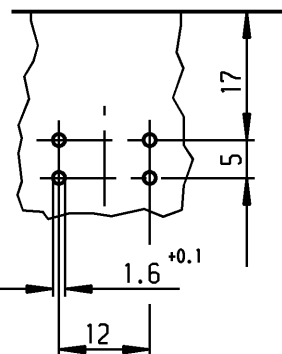


Empfohlenes Lochbild; Bauteileseite
Toleranzen nach DIN IEC 326 sehr fein
recommended terminal layout; side of component
tolerances as per DIN IEC 326 item 3 very fine

Empfohlener Ausschnitt fuer Rastbefestigung (Grat gegenueber Bestueckungsseite)
recommended cut-out for snap-in fixing (edge opposite to snap-in direction)

| Wanddicke wall-thickness | Ausschnittlaenge length of cut-out | Ausschnittbreite width of cut-out |
|-----------------------------|---------------------------------------|--------------------------------------|
| 0.75 to / bis 1.25 | 26.2 -0.1 | 12.4 +0.1 |
| 1.25 to / bis 2 | 26.4 -0.1 | 12.4 +0.1 |
| 2 to / bis 3 | 26.8 -0.1 | 12.4 +0.1 |



VERTRAULICH - CONFIDENTIAL
 © Alle Rechte bei Marquardt, auch fuer den Fall von Schutzrechtsanmeldungen. Jede Verfuegungsbefugnis, wie Kopier- und Weitergaberecht, bei uns.
 © This document is the exclusive property of Marquardt. Without our consent, it may not be reproduced or given to third parties.

Marking
Aufschrift

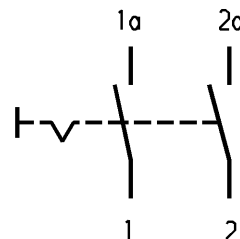
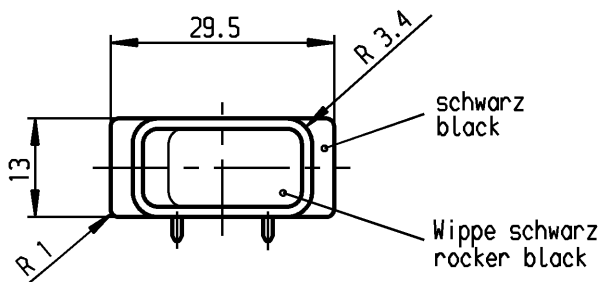


- 155..
- 16(4)/250 ~
- 10(4)/250 ~ 5E4 T100/55 T100
- 5/100A 250V ~



16A 125-250V AC
1 HP 125V AC
2 HP 250V AC
R38

Herstellort/-jahr/-woche
nach DIN EN 60062
code of manufacture:
place/year/week acc. to DIN EN 60062



Ausschalter 2-polig

Fuer Geraete der Klasse II geeignet

DPST

suitable for appliances of class II

Schutzvermerk
nach DIN 34 beachten
COPYRIGHT RESERVED

| | | | | | | | | | | | | | |
|---|----------------------|------------------|--|---|------------------|---|-------------------|---------------|-----------------------|-------------------------------------|----------|----------------------------------|-------|
| Für Form und Lage FOR SHAPE AND LOC. | | | Allgemeintoleranzen UNTOLERANCED DIMENSIONS | | | | | Pause COPY | Blatt SHEET 01 | | Typ K | Zeichn./DRAWING NO. 1552.4605 | Index |
| | | | PROJECTION | Abmasse und Nennmassbereiche Angaben in mm ALL DIMENSIONS ARE IN MILLIMETRES | | | Laengen LENGTH | | Radien RADI I | | | | |
| 0-6 | ± 0.2 | ± 0.2 | | | | | | | | | | | |
| >6-15 | ± 0.4 | ± 0.4 | | | | | | | | | | | |
| >15-30 | ± 0.4 | ± 0.4 | | | | | | | | | | | |
| >30-70 | ± | ± | | | | | | | | | | | |
| >70-120 | ± | | | | | | | | | | | | |
| >120-200 | ± | | | | | | | | | | | | |
| Für Winkel FOR ANGLE ± 2° | | | | | | | | | Original DIN A4 | Maßstab SCALE 1:1 | | | |
| | | | | | | | | | | | | | |
| c | | | g | | | CAD Medusa | | Z | | Geraeteschalter Appliance Switch | | | |
| b | 69572 | 11.10.10 hhe | f | | | gez./DRAWN BY 16.11.99 Mut | | | | | | | |
| a | 35129 | 27.02.03 wj | e | | | gepr./CHECKED BY mej | | | | | | | |
| | 28568 | 16.11.99 Mut | d | | | Ersatz für/REPLACEMENT OF | | | | | | | |
| Ausg. ISSUE | Änderung REVISION | gez. DRAWN BY | Ausg. ISSUE | Änderung REVISION | gez. DRAWN BY | MARQUARDT Marquardt, D-78604 Rietheim-Weilheim | | | | | | | |

Mouser Electronics

Authorized Distributor

Click to View Pricing, Inventory, Delivery & Lifecycle Information:

Marquardt:

1552.4605