
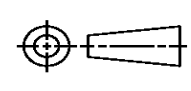


4		3		2		1													
THIS DRAWING IS UNPUBLISHED.		RELEASED FOR PUBLICATION		LOC		DIST		REVISIONS											
© COPYRIGHT		ALL RIGHTS RESERVED.						P		LTR		DESCRIPTION		DATE		DWN		APVD	
										A1		ECR-16-009821		12JUL2016		GK		SD	

# REPLACED BY OCEAN STYLE APPLICATOR PART NUMBER 2836084-2

FOR REPLACEMENT PARTS FOR APPLICATOR 1855311  
REFER TO ADDITIONAL PAGE(S). SPARE PARTS KIT (IF LISTED)  
WILL REMAIN AVAILABLE.

THE REPLACEMENT OCEAN STYLE APPLICATOR HAS THE  
SAME TERMINATOR/PRESS INTERFACE AS APPLICATOR  
1855311

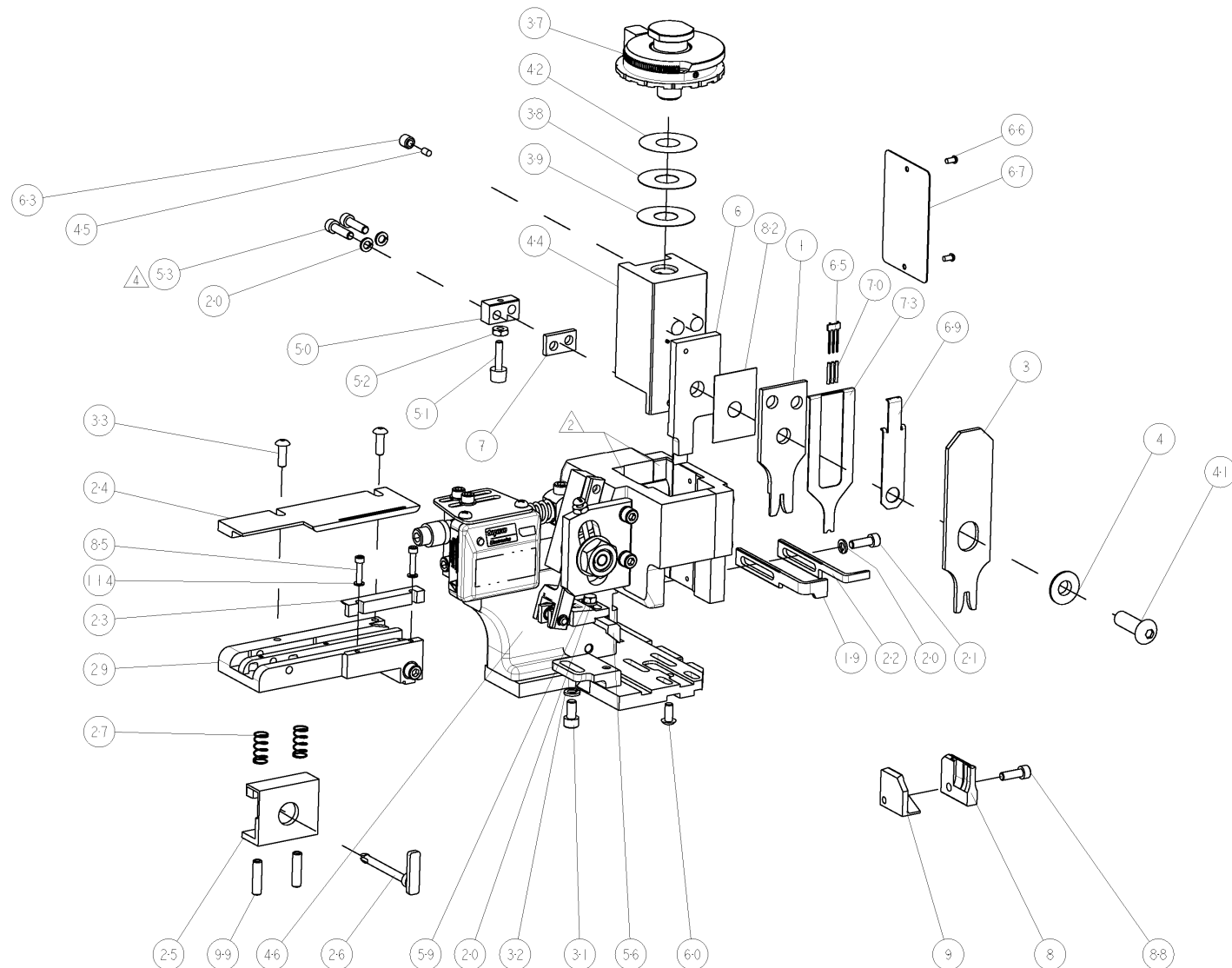
THIS DRAWING IS A CONTROLLED DOCUMENT.				DWN GOPALAKRISHNA HV		 TE Connectivity							
DIMENSIONS:				CHK GOPALAKRISHNA HV									
				APVD STOUGH DALE		NAME FINE ADJUST SIDE FEED HDM APPLICATOR							
				PRODUCT SPEC									
				APPLICATION SPEC									
				MATERIAL		FINISH		WEIGHT		SIZE A3		CAGE CODE	
				CUSTOMER DRAWING				SCALE		SHEET 1 OF 2		REV A1	

1470-19 (3/11)


Pro/ENGINEER DRAWING

[illegible]

- \* WARNING**  
ON INSTALLATION, SET WIRE  
DISC TO LARGEST WIRE SIZE  
SETTING. USE OF SETTINGS  
BELOW MIN. REQUIRED CRIMP  
HEIGHT SETTING WILL CAUSE  
DAMAGE TO CRIMP TOOLING.



3	-	-	-	REF	-	..	455749-1	GUARD WINDOW	116
	-	-	-	REF	-	..	679532-1	INSERT, GUARD	115
	-	2	2	2	2	-	21024-2	WASHER, SPRG LOCK, REG NO 4	114
4	-	2	2	2	2	-	5-21006-6	SCR, SET, CUP POINT 10-32 X .750	99
	-	1	1	1	1	-	1-21002-7	SCR, BTN SKT HD CAP 6-32 X .375	91
	-	1	1	1	1	-	2-21000-7	SCR, SKT HD CAP 8-32 X .500	88
	-	2	2	2	2	-	1-21000-5	SCR, SKT HD CAP 4-40 X .500	85
	-	1	1	1	1	-	455888-2	SPACER, CRIMPER	82
	-	1	1	1	1	-	1490525-3	DEPRESSOR, WIRE	73
	-	1	1	1	1	-	4088040	SF APPL INST 408-8040	72
	-	1	1	1	1	-	217238-1	GENERAL INSTRUCTION PKG	7
	-	3	3	3	3	-	2-23147-2	SPRING, COMPRESSION	70
	-	1	1	1	1	-	1490524-1	DEPRESSOR, SPACER	69
	-	1	1	1	1	-	461264-5	PLATE, IDENTIFICATION	67
	-	2	2	2	2	-	21017-2	SCREW, DRIVE	66
	-	1	1	1	1	-	1424350-1	HOLDER, PIN, WIRED	65
	-	1	1	1	1	-	21009-2	SCR, SET, SELF LOCKING 1/4-20 X .250	63
	-	1	1	1	1	-	22733-8	SCR, BHSC, SELF-LOCKING, 8-32 X .375	60
	-	1	1	1	1	-	2-22603-0	SCR, HEX HD CAP 8-32 X .312	59
	-	1	1	1	1	-	4-694433-4	FEED PAWL	56
	-	2	2	2	2	-	2-21000-8	SCR, SKT HD CAP 8-32 X .625	53
	-	1	1	1	1	-	21018-5	NUT, HEX, REG 6-32	52
	-	1	1	1	1	-	811242-2	BUMPER, HOLD DOWN	51
	-	1	1	1	1	-	690753-1	SPACER, TONKER	50
	-	-	-	-	-	..	690602-6	CAM, PRE FEED, 1 5/8	49
	-	-	-	-	-	..	690602-5	CAM, PRE FEED, 1 1/8	48
	-	1	-	-	-	-	690501-4	CAM, POST FEED, 1 5/8	47
	-	1	1	1	1	-	459456-1	APPL. BASIC SUB ASSY (SIDE WISE MQCA)	46
	-	1	1	1	1	-	690191-1	PLUG, NYLON	45
	-	1	1	1	1	-	455673-8	RAM, SIDE FEED	44
	-	1	1	1	1	-	469367-3	SHIM	42
	-	1	1	1	1	-	7-21002-9	SCR, BTN SKT HD CAP 5/16-24 X 1.00	41
	-	1	1	1	1	-	690125-1	SHIM SUB-ASSY	39
	-	1	1	1	1	-	469367-1	SHIM	38
	-	1	1	1	1	-	879103-2	FINE ADJUST HEAD ASSEMBLY	37
-	2	2	2	2	-	2-21002-2	SCR, BTN SKT HD CAP 8-32 X .500	33	
-	1	1	1	1	-	21024-5	WASHER, SPRG LOCK, REG NO 10	32	
-	1	1	1	1	-	3-21000-4	SCR, SKT HD CAP 10-32 X .375	31	
-	1	1	1	1	-	1-318756-4	STRIP GUIDE PLATE ASSY	29	
-	2	2	2	2	-	8-22281-7	SPRING, COMPRESSION	27	
-	1	1	1	1	-	690546-1	LEVER, DRAG RELEASE	26	
-	1	1	1	1	-	2-690754-1	DRAG, SPECIAL	25	
-	1	1	1	1	-	1320860-2	STRIP GUIDE, REAR	24	
-	1	1	1	1	-	1-690712-6	FRONT STRIP GUIDE	23	
-	1	-	-	-	-	690472-2	STRIPPER	22	
-	1	1	1	1	-	2-21000-7	SCR, SKT HD CAP 8-32 X .500	21	
-	4	4	4	4	-	21024-4	WASHER, SPRG LOCK, REG NO 8	20	
-	-	1	1	-	-	691353-1	STRIPPER	19	
-	1	-	-	-	..	-	-	13	
-	-	-	-	-	..	-	-	12	
-	-	-	-	-	..	-	-	11	
-	-	-	-	-	..	-	-	10	
1	-	1	1	1	1	-	2-853714-0	PLATE, REAR SHEAR	9
1	1	1	1	1	1	-	1633054-2	ANVIL, SPECIAL	8
-	1	1	1	1	1	-	240641-7	SPACER	7
1	-	1	1	1	1	-	1-853720-4	BLADE, SLUG	6
-	1	1	1	1	1	-	238009-4	BLOCK, FL CRIMPER SPACER	4
1	1	1	1	1	1	-	6-456134-6	CRIMPER, INSULATION F PREMIUM	3
-	-	-	-	-	..	-	-	2	
1	1	1	1	1	1	-	3-456405-9	CRIMPER, WIRE PREMIUM	1
-77	-6	-3	-2	-1	U/M	PART NO	DESCRIPTION		ITEM NO

THIS DRAWING IS A CONTROL DOCUMENT FOR THE MANUFACTURING ORGANIZATION IT IS VALID FOR THE ENTIRE LIFE OF THE PART AND SHOULD BE CONTINUED FOR THE LATEST REVISION		OWN D. PROUSE		25JUL2007		NO	
		CHK -		-		Tyco Electronics Harrisburg, PA 17105-3608	
DIMENSIONS:  INCHES		TOLERANCES, UNLESS OTHERWISE SPECIFIED:		APPROVED J. LILFORD 25JUL2007		NAME	
		0 PLC ±.1 1 PLC ±.01 2 PLC ±.001 3 PLC ±.001 4 PLC ±.0001 ALL ANGLES .5°		PRODUCT SPEC		FINE ADJUST SIDE FEED HDM APPLICATOR	
				APPLICATION SPEC		SIZE CASE CODE DRAWING NO	
MATERIAL -		FINISH -		WEIGHT -		A1 00779 C=1855311	
				CUSTOMER DRAWING		SCALE 3:5 SHEET 1 OF 1 REV. A	
						RESTRICTED TO	

# Mouser Electronics

Authorized Distributor

Click to View Pricing, Inventory, Delivery & Lifecycle Information:

[TE Connectivity:](#)

[1855311-2](#)