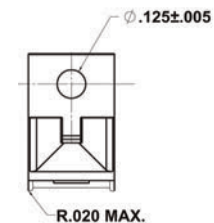
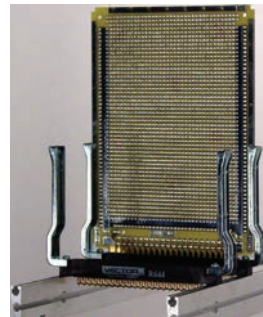


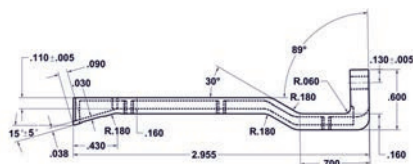
Free Standing Connector Mounted Card Guides

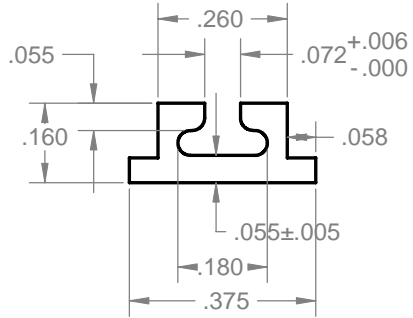
Secure connection, rugged support of 0.062" thick PCB's when space is limited. P/N BR27D is die cast of zinc alloy#3 (ASTM B240-06). Other sizes are 6063 T5 aluminum alloy. All sizes include HD55 hardware kit to attach connector to board. Connector not included (See Page 70). All sold as a pair and are fully RoHS compliant.



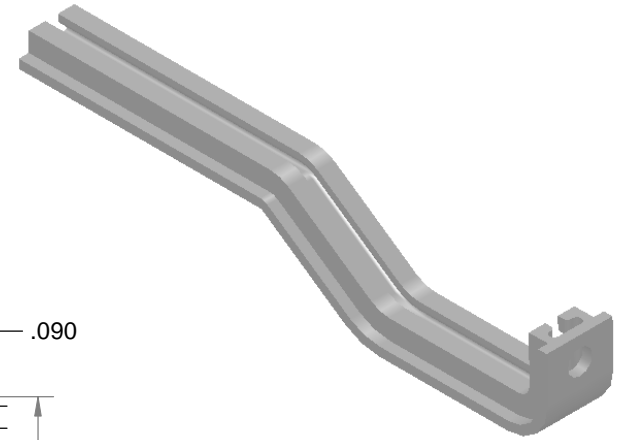
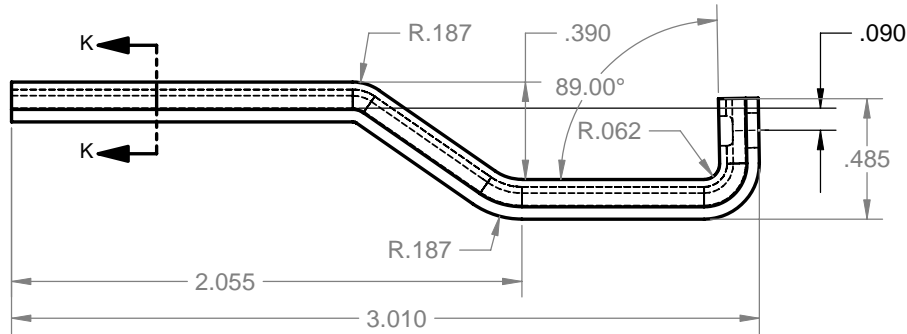
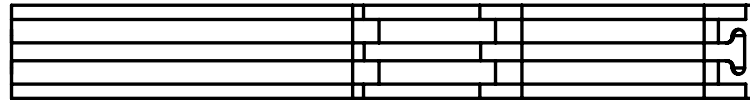
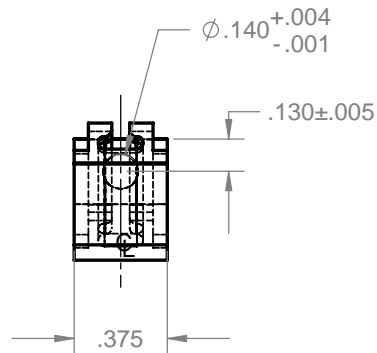
| Part No. | Use With Connector | For Use With | Material |
|----------|--------------------------------|---|------------------|
| BR27D | R644, R644-2, R644-3C, R644-3F | 4.5"W (3677, 3682 & 3662 series), Page 57 | Zinc #3 |
| BR27-1 | R636-1, R636-2 | 4.5"W (3719 series), Page 58 | Al Alloy 6063 T5 |
| BR27-3 | R630 | 2.73"W (3797 series), Page 56 | Al Alloy 6063 T5 |
| BR27-5 | R656-1, R656-2 | 4.5"W (4610 series), Page 63 | Al Alloy 6063 T5 |

BR27D Zinc die-cast model shown





SECTION K-K
SCALE 4:1



| REVISIONS | | | | |
|-----------|------|-------------|----------|----------|
| ZONE | REV. | DESCRIPTION | DATE | APPROVED |
| ALL | F | | 01/08/09 | |
| | | | | |

4. PARTS TO BE DEGREASED AFTER FABRICATION
3. PARTS TO BE FREE OF EXCESSIVE BURS AND SURFACE SCRATCHES
2. FINISH: CLEAR ANODIZE
1. MATERIAL: ALUM. EXTRUSION 6063-T5

NOTES: UNLESS OTHERWISE SPECIFIED.

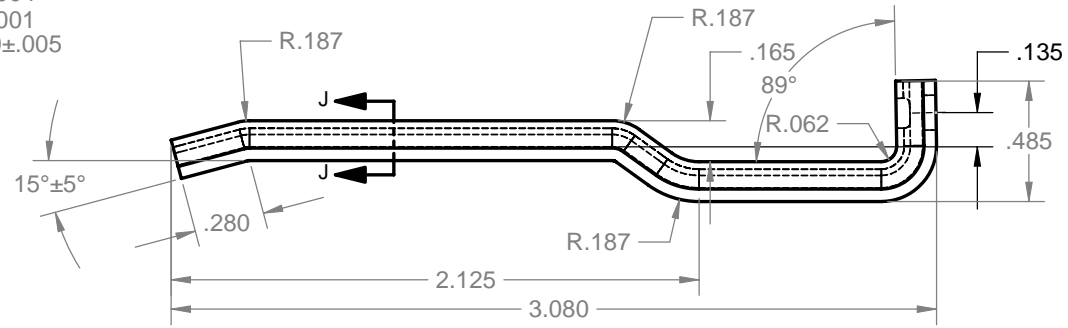
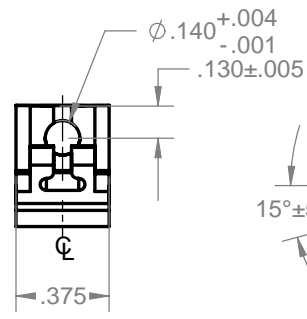
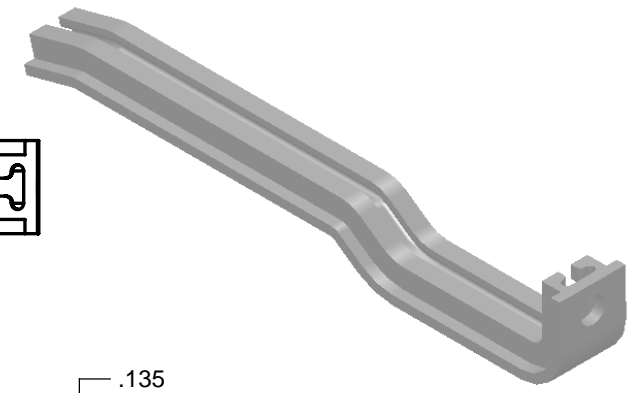
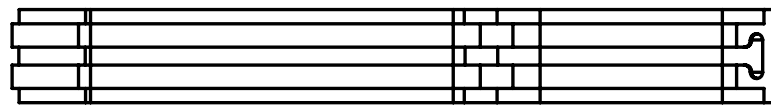
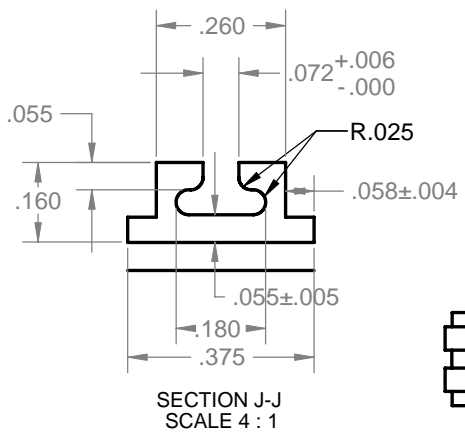
PROPRIETARY AND CONFIDENTIAL
THE INFORMATION CONTAINED IN THIS DRAWING IS THE SOLE PROPERTY OF VECTOR ELECTRONICS & TECH., INC. ANY REPRODUCTION IN PART OR AS A WHOLE WITHOUT THE WRITTEN PERMISSION OF VECTOR ELECTRONICS & TECH., INC. IS PROHIBITED.

| | |
|--------------------------------------|---|
| UNLESS OTHERWISE SPECIFIED: | |
| DIMENSIONS ARE IN INCHES | |
| TOLERANCES: | |
| FRACTIONAL ± | |
| ANGULAR: ±5° | |
| TWO PLACE DECIMAL ±.03 | |
| THREE PLACE DECIMAL ±.010 | |
| INTERPRET GEOMETRIC TOLERANCING PER: | |
| MATERIAL | 1 |
| FINISH | 2 |
| DO NOT SCALE DRAWING | |

| | | |
|------------------------|---------|----------|
| DRAWN | TRUSHAR | 01/08/09 |
| CHECKED | | |
| ENG APPR. | | |
| MFG APPR. | | |
| Q.A. | | |
| THIRD ANGLE PROJECTION | | |

| | | | |
|---|--|--|--|
| VECTOR ELECTRONICS & TECHNOLOGY, INC. | | 11115 VANOWEN ST., NORTH HOLLYWOOD, CA 91605 | |
| CARD GUIDE BR27-3 | | | |
| SIZE DWG. NO. | | REV | |
| B M5474-1-8 | | F | |
| SCALE: 1:1 WEIGHT: | | SHEET 1 OF 1 | |

| REVISIONS | | | | |
|-----------|------|-------------|----------|----------|
| ZONE | REV. | DESCRIPTION | DATE | APPROVED |
| ALL | F | | 01/08/09 | |
| | | | | |



4. PARTS TO BE DEGREASED AFTER FABRICATION
 3. PARTS TO BE FREE OF EXCESSIVE BURS AND SURFACE SCRATCHES
 2. FINISH: CLEAR ANODIZE
 1. MATERIAL: ALUM. EXTRUSION 6063-T5

NOTES: UNLESS OTHERWISE SPECIFIED.

PROPRIETARY AND CONFIDENTIAL
 THE INFORMATION CONTAINED IN THIS
 DRAWING IS THE SOLE PROPERTY OF
 VECTOR ELECTRONICS & TECH., INC. ANY
 REPRODUCTION IN PART OR AS A WHOLE
 WITHOUT THE WRITTEN PERMISSION OF
 VECTOR ELECTRONICS & TECH., INC. IS
 PROHIBITED.

UNLESS OTHERWISE SPECIFIED:
 DIMENSIONS ARE IN INCHES
 TOLERANCES:
 FRACTIONAL ±
 ANGULAR: ±5°
 TWO PLACE DECIMAL ±.03
 THREE PLACE DECIMAL ±.010
 INTERPRET GEOMETRIC
 TOLERANCING PER:
 MATERIAL **1**
 FINISH **2**
 DO NOT SCALE DRAWING

| NAME | DATE |
|-----------|----------|
| TRUSHAR | 01/08/09 |
| CHECKED | |
| ENG APPR. | |
| MFG APPR. | |
| Q.A. | |

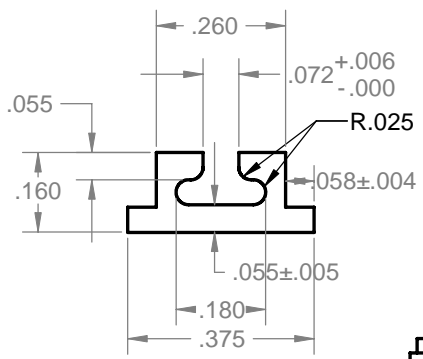
THIRD ANGLE PROJECTION

VECTOR
 ELECTRONICS & TECHNOLOGY, INC. 11115 VANOWEN ST.,
 NORTH HOLLYWOOD, CA 91605

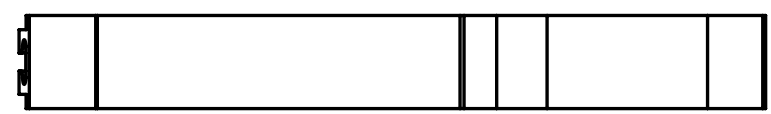
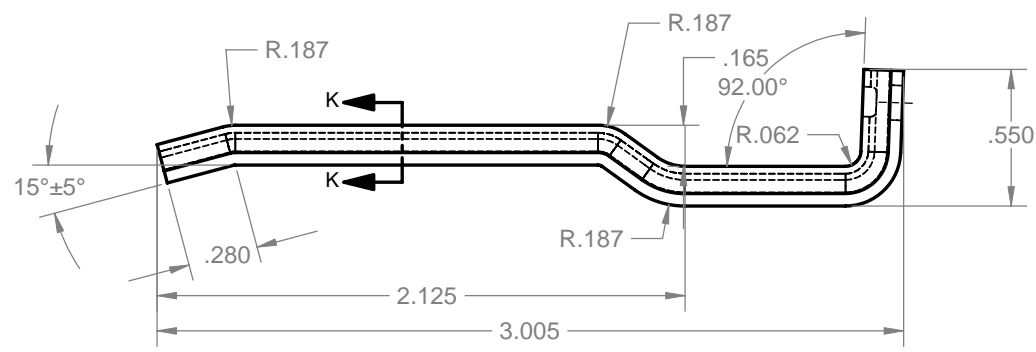
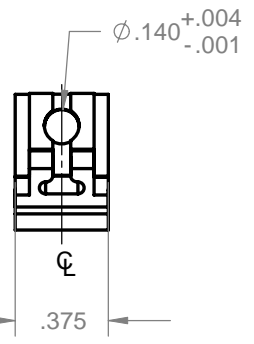
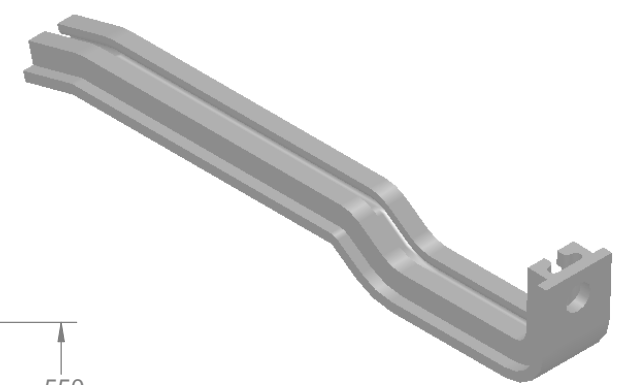
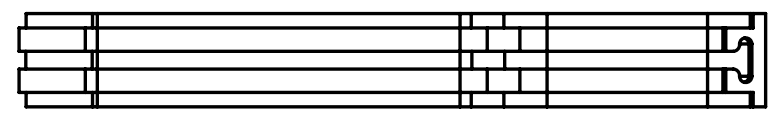
CARD GUIDE
BR27-1

| | |
|---------------------------|--------------|
| SIZE DWG. NO. | REV |
| B M5474-1-5 | F |
| SCALE: 1:1 WEIGHT: | SHEET 1 OF 1 |

| REVISIONS | | | | |
|-----------|------|-------------|----------|----------|
| ZONE | REV. | DESCRIPTION | DATE | APPROVED |
| ALL | F | | 01/08/09 | |
| | | | | |



SECTION K-K
SCALE 4 : 1



4. PARTS TO BE DEGREASED AFTER FABRICATION
 3. PARTS TO BE FREE OF EXCESSIVE BURS AND SURFACE SCRATCHES
 2. FINISH: CLEAR ANODIZE
 1. MATERIAL: ALUM. EXTRUSION 6063-T5
- NOTES: UNLESS OTHERWISE SPECIFIED.

PROPRIETARY AND CONFIDENTIAL
 THE INFORMATION CONTAINED IN THIS DRAWING IS THE SOLE PROPERTY OF VECTOR ELECTRONICS & TECH., INC. ANY REPRODUCTION IN PART OR AS A WHOLE WITHOUT THE WRITTEN PERMISSION OF VECTOR ELECTRONICS & TECH., INC. IS PROHIBITED.

| | | | | | |
|--------------------------------------|---|------------------------|---------|--|----------|
| UNLESS OTHERWISE SPECIFIED: | | NAME | DATE | 11115 VANOWEN ST., NORTH HOLLYWOOD, CA 91605 | |
| DIMENSIONS ARE IN INCHES | | DRAWN | TRUSHAR | | 01/08/09 |
| TOLERANCES: | | CHECKED | | | |
| FRACTIONAL ± | | ENG APPR. | | | |
| ANGULAR: ±5° | | MFG APPR. | | | |
| TWO PLACE DECIMAL ±.03 | | Q.A. | | | |
| THREE PLACE DECIMAL ±.010 | | THIRD ANGLE PROJECTION | | | |
| INTERPRET GEOMETRIC TOLERANCING PER: | | | | | |
| MATERIAL | 1 | | | | |
| FINISH | 2 | | | | |
| DO NOT SCALE DRAWING | | | | | |

| | | |
|---------------|------------|--------------|
| SIZE DWG. NO. | | REV |
| B | M5474-1-12 | F |
| SCALE: 1:1 | WEIGHT: | SHEET 1 OF 1 |

Mouser Electronics

Authorized Distributor

Click to View Pricing, Inventory, Delivery & Lifecycle Information:

Vector:

[CG2-80P](#) [CG2-80M](#) [CG2-65S](#) [CG2-95P](#) [CG2-95M](#) [CG2-50P](#) [CG2-95S](#) [BR27D](#) [CG2-80S](#) [CG2-135M](#) [CG2-65P](#)
[CG2-45P](#)