



Assembled Solutions

ecomate® Plastic



Amphenol is pleased to announce the addition of **ecomate® Overmolded Standard Cable Assemblies** to the proven line of quick-mating circular plastic connector series. The integrated uni-directional strain relief system is especially suited to the ecomate® standard connector featuring enhanced performance by increasing the reliability of one of the most dependable interconnect systems on the market today.

The process utilizes first quality resins which encapsulate the wire terminations into the connector housing creating a highly functional & compact strain relief to ensure a long service life. Built to exceptional quality standards, the resulting barrier of protection provides advanced sealing capability (IP68), preventing liquid ingress for a variety of markets such as Industrial Control, Lighting Systems, Electronics and Solar Applications.

The ergonomic design further enhances ecomate® long standing functionality available in male and female double or single-ended cordsets in silver plated 4 & 7 position configurations. Amphenol offers standard mating receptacles complete with wire leads or field-attachable connectors for a user-friendly & secure connection system.

The UL listed PVC jacketed cable offers the inherent benefits of TC-ER, Submersible Pump, Direct Burial, as well as Sunlight Resistant ratings. Standard wiring is point-to-point, with special wiring available upon request. Each cable assembly is manufactured and tested per the requirements of IPC/WHMA-A-620.

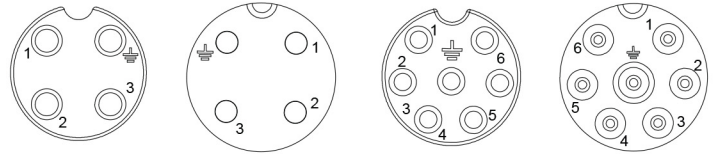
Your Interconnect Solutions Expert

Features & Benefits and Specifications

Features & Benefits

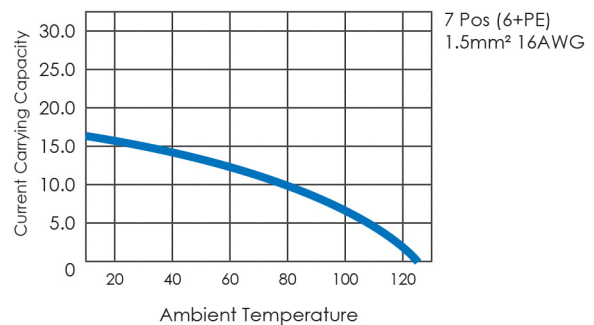
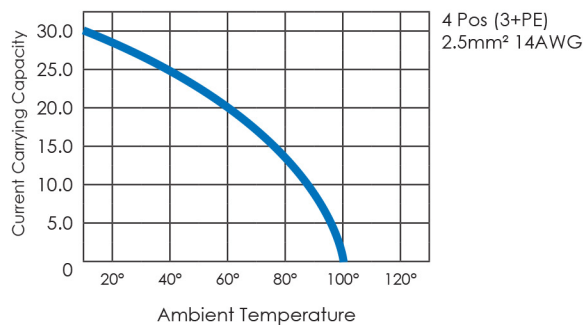
- Secure for outdoor and indoor applications.
- Rapid Screw Locking Coupling System
- Rugged plastic connector housing
- High flexibility cable
- Resistant to a wide range of chemical fluids
- Mating Cycles: 500
- UV & corrosion resistant
- RoHS compliant

Faceviews



General Characteristics	Standard	Characteristics	
Number of Contacts		4 (3+PE)	7 (6+PE)
Wire Gauge AWG		0.75 - 2.5 mm ² 18-14AWG	0.14 - 1.5 mm ² 26-16AWG
Flammability	UL94	VO	
Locking System		Rapid Screw Locking Coupling System	
Electrical Characteristics			
Rated Voltage	IEC 60664-1 ¹⁾	400V	250V
Pollution Degree	IEC 60664-1 ¹⁾	3	
Installation Category	IEC 60664-1 ¹⁾	III	
Insulation Group	IEC 60664-1 ¹⁾	II	
Rated Impulse Withstand Voltage	IEC 60664-1 ¹⁾	6000V	4000V
Current Rating	IEC 60512-5-2	16A/+55°C	13A/+55°C
Contact Resistance	IEC 60512-2-1	≤ 5m Ω	
Insulation Resistance	IEC 60512-3-1	≥ 10 ⁸ Ω	
Climatic Characteristics			
Climatic Category	IEC 60068-1	40/100/56	40/125/56
Operating Temperature		-40°C to +100°C	
Mechanical Characteristics			
IP Degree	IEC 60529	IP65 (unmated) / IP68 (mated)	
Insertion and Withdrawal Forces	IEC 60512-13-2	≤ 15N	≤ 30N
Mechanical Operation	IEC 60512-9-1	≥ 500 Mating Cycles	
Materials			
Cable Rating		UL TC-ER, MTW, WTTC, DP-1, AWM 2586, cUL CIC-TC, CSA AWM	
Housing Material		PA 6.6 / PA 6	
Dielectric Material		PA 6.6 / PA 6	
Gasket Material		Neoprene	
Contact Plating		Silver Plating	

Derating Curves²⁾



The stated technical values refer to the use as connector without breaking capacity (COC). If these components are used as plug and socket device a reduced current carrying capacity has to be considered. The characteristics have to be requested from the manufacturer.

1) DIN EN 60664-1 ^ = VDE 0110-1 ^ = IEC 60664-1 2) All contacts under load

Cable Assemblies and Receptacles

Cable Assemblies are available in standard lengths (Meters) of: 1, 2, 3, 5, 7, 10 and 15.

Receptacles are available in standard lengths (Meters) of: 0.3, 0.5 and 1.

To specify Length, replace the **XXX** in the Part Number with the specific 3-digit number from the **Length Indicator Chart** of your choice. See examples below.

Length Indicator Chart	
Replace XXX with:	Length (Meters)
003	0.3 Meter
005	0.5 Meter
010	1 Meter
020	2 Meter
030	3 Meter
050	5 Meter
070	7 Meter
100	10 Meter
150	15 Meter

CA0161B223XXX12 @ 1 Meter Length = CA0161B22301012

4 Pos Circular Molded Cable Assy, Std. Strain Relief, Female to Leads, 14AWG, **1M Length**

CA0162C223XXX12 @ 10 Meter Length = CA0162C22310012

4 Pos Circular Molded Cable Assy, Std. Strain Relief, M-F, 14AWG, **10M Length**

CA0161F116XXX @ 0.5 Meter Length = CA0161F116005

7 Pos Female Receptacle, UL1015, 16AWG Leads, **0.5 Length**

Part Number	Description	Length (Meters)
CA0161B223XXX12	ecomate® 4 Pos Circular Molded Cable Assy, Std. Strain Relief, Female to Leads, 14AWG	See Length Indicator Chart
CA0161A223XXX12	ecomate® 4 Pos Circular Molded Cable Assy, Std. Strain Relief, Male to Leads, 14AWG	See Length Indicator Chart
CA0162C223XXX12	ecomate® 4 Pos Circular Molded Cable Assy, Std. Strain Relief, M-F, 14AWG	See Length Indicator Chart
CA0161F113XXX	ecomate® 4 Pos Female Receptacle, UL1015, 14AWG Leads	See Length Indicator Chart
CA0161G113XXX	ecomate® 4 Pos Male Receptacle, UL1015, 14AWG Leads	See Length Indicator Chart



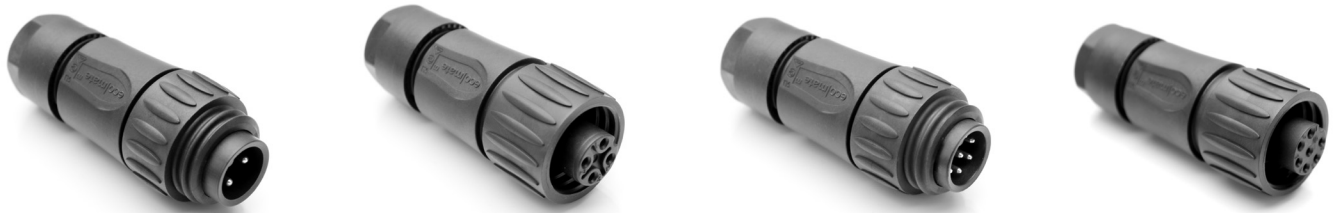
Part Number	Description	Length (Meters)
CA0161B226XXX12	ecomate® 7 Pos Circular Molded Cable Assy, Std. Strain Relief, Female to Leads, 16AWG	See Length Indicator Chart
CA0161A226XXX12	ecomate® 7 Pos Circular Molded Cable Assy, Std. Strain Relief, Male to Leads, 16AWG	See Length Indicator Chart
CA0162C226XXX12	ecomate® 7 Pos Circular Molded Cable Assy, Std. Strain Relief, M-F, 16AWG	See Length Indicator Chart
CA0161F116XXX	ecomate® 7 Pos Female Receptacle, UL1015, 16AWG Leads	See Length Indicator Chart
CA0161G116XXX	ecomate® 7 Pos Male Receptacle, UL1015, 16AWG Leads	See Length Indicator Chart



Straight Connectors

Mating Connectors for both 4 (3+PE) and 7 (6+PE) Position

Part Number	Description
C01620H00310012	ecomate® 4 Pos Male Cable Connector, Straight, Silver Plated Contacts, Field Installable, Str. Relief w Clamping Ring 6-12.5mm, Black
C01620D00310012	ecomate® 4 Pos Female Cable Connector, Straight, Silver Plated Contacts, Field Installable, Str. Relief w Clamping Ring 6-12.5mm, Black
C01610H00600012	ecomate® 7 Pos Male Cable Connector, Straight, Silver Plated Contacts, Crimp Termination, Str. Relief w Clamping Ring 6-12.5mm, Black
C01610D00600012	ecomate® 7 Pos Female Cable Connector, Straight, Silver Plated Contacts, Crimp Termination, Str. Relief w Clamping Ring 6-12.5mm, Black



Accessories

Protective Caps for both 4 (3+PE) and 7 (6+PE) Position

Part Number	Description
C01600U00000012	ecomate® Protective Cap for Male Receptacle with Tether
C01600V00000012	ecomate® Protective Cap for Female Receptacle with Tether
C01600U00001012	ecomate® Protective Cap for Male Cable Connector with Tether
C01600V00001012	ecomate® Protective Cap for Female Cable Connector with Tether



Our **ecomate® Family** of products is comprised of ecomate® C16, ecomate® Rugged Metal, ecomate® Aquarius™ and ecomate® Plastic connectors and cable assemblies. This family of products provide interconnect solutions for all environments ranging from indoor industrial to outdoor waterproof applications. Each product line comes in straight and 90° plug options, as well as receptacles. Custom color options are available.

For other assembled solution options across our product lines, contact Customer Service at +1 800 394 7732 or visit www.amphenol-sine.com.



© 2017 Amphenol Sine Systems Corporation, 44274 Morley Drive, Clinton Township MI 48036 USA. www.amphenol-sine.com. Customer Service +1 800 394 7732 Every effort has been made to ensure that the information contained in this document is accurate at the time of publication. Specifications or information stated in this document are subject to change without notice.