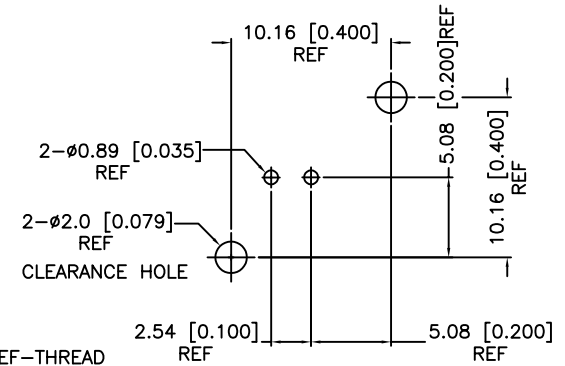
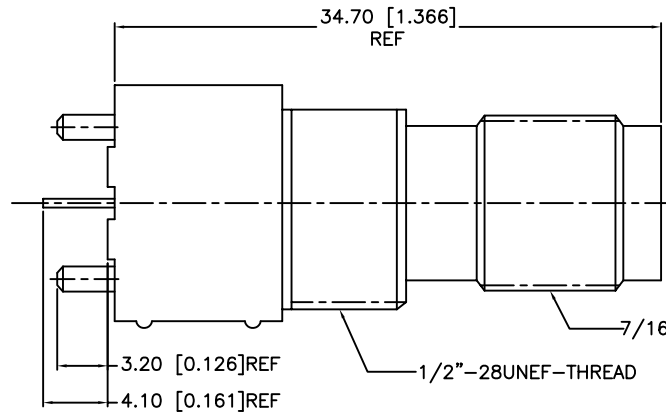
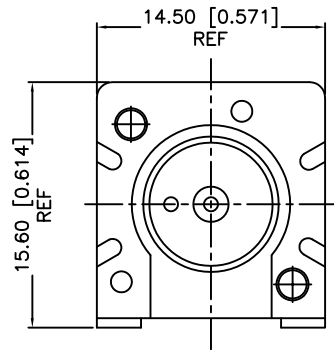


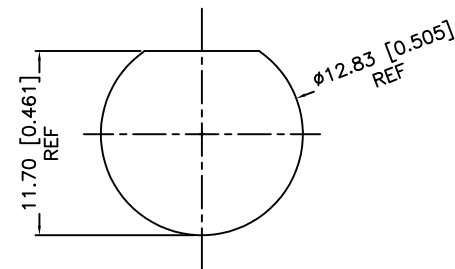
REV.	DATE	DESCRIPTION
A	03-Mar-10	RELEASE TO MFG.



RECOMMENDED P.C.B LAYOUT

SPECIFICATIONS:
 MECHANICAL CHARACTERISTICS:
 MATING/UNMATING - 500 CYCLES

 ELECTRICAL CHARACTERISTICS:
 NORMAL IMPEDANCE - 50 OHMS
 FREQUENCY RANGE - 0-1 GHZ
 OPERATING VOLATGE - 500 VOLTS RMS
 INSULATION RESISTANCE - 5000 MEGOHMS MIN.



PANEL CUTOUT

RoHS COMPLIANCE

					<div>UNLESS OTHERWISE SPECIFIED DIMENSIONS ARE IN MILLIMETERS. DIMENSIONS IN [] ARE IN INCHES AND FOR CUSTOMER REFERENCE ONLY.</div> <div>UNLESS OTHERWISE SPECIFIED TOLERANCES FOR MILLIMETERS ARE: 0.5 – 8mm ± 0.20mm 8 – 30mm ± 0.40mm 30 – 120mm ± 0.50mm</div> <div>UNLESS OTHERWISE SPECIFIED TOLERANCES FOR INCHES ARE: .020 – .315 = ± 0.007" .315 – 1.180 = ± 0.015" 1.180 – 4.724 = ± 0.020"</div> <div>DO NOT SCALE DRAWING</div>	APPROVALS		DATE		AMPHENOL CONNEX									
						DRAWN	CLEMENT	03–Mar–10											
						CHECKED				PART DESCRIPTION TNC VERTICAL PCB MOUNT RECEPTACLE IMPEDANCE 50 OHM									
						ISSUED													
						SHEET	1 OF 1				PART NO. 122956								
						CAD FILE C:\122\122956.DWG					DWG. NO.		122956.DWG		REV.	A	SIZE	A	SCALE
NO	DESCRIPTION	MATERIAL	FINISH	QTY															
6	GROUNDING TERMINAL	STRIP COPPER	TIN	1															
5	MOUNTING HOOK	BRASS	TIN	1															
4	HOUSING	PBT+30%G.F (UL 94 V–0)	WHITE	1															
3	INSULATOR	POLYPROPYLENE UL 94HB	NATURAL	1															
2	CENTER CONTACT	PHOSPHOROUS BRONZE	GOLD	1															
1	CONN.BODY	ZINC ALLOY	NICKEL	1															

Mouser Electronics

Authorized Distributor

Click to View Pricing, Inventory, Delivery & Lifecycle Information:

[Amphenol:](#)

[122956](#)