

MPPT SERIES

(5.00 mm) .1969"

HERMAPHRODITIC 30 A POWER SYSTEM

SPECIFICATIONS

For complete specifications see www.samtec.com?MPPT

Insulator Material:

Black LCP

Terminal Material:

Copper Alloy

Plating:

Sn or Au over 50 μ" (1.27 μm) Ni

Operating Temp Range:

-55 °C to +105 °C with Tin;

-55 °C to +125 °C with Gold

Voltage Rating:

600 VAC/848 VDC

Standard Creepage:

(2.95 mm) .116"

Standard Clearance:

(2.71 mm) .106"

RoHS Compliant:

Yes

Lead-Free Solderable:

Yes

Mates with:

MPPT

MPPT/MPPT	
POWER PINS	CURRENT RATING (PER CONTACT)
1	23.3 A
2	20.5 A
3	19.4 A
4	18.4 A
10	17.2 A

Dual leaf contacts



Screw down option

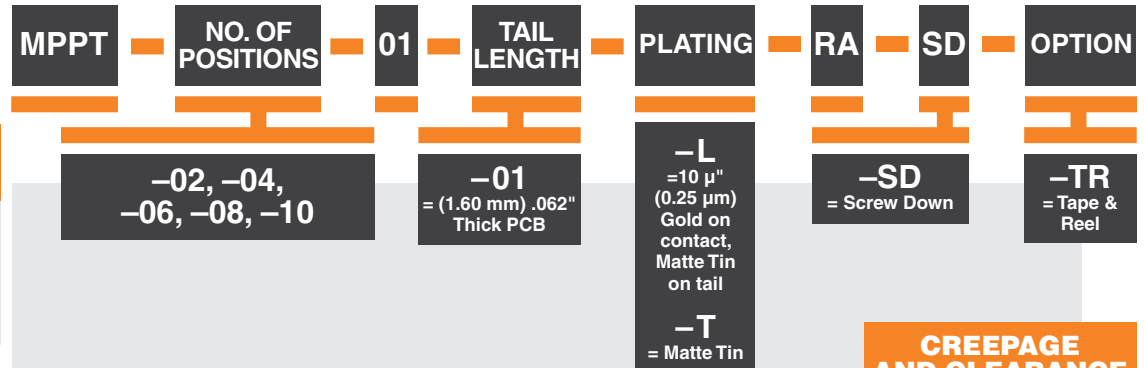
Dual blade post

RUGGEDIZED
BY SAMTEC

• Screw down option

RECOGNITIONS

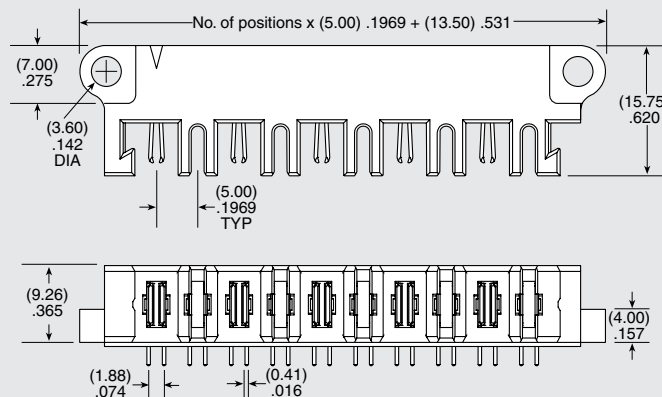
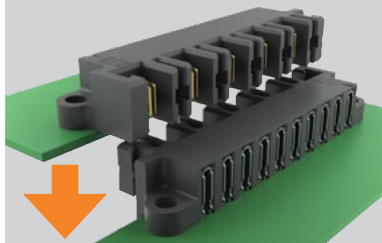
For complete scope of recognitions see www.samtec.com/quality



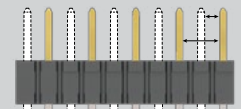
ALSO AVAILABLE (MOQ Required)

- Locking Clip (Manual placement required)
- Solder Leads for (2.36 mm) .093" thick board Contact Samtec.

APPLICATION



CREEPAGE AND CLEARANCE



Selectively loading contacts achieves customer specific creepage and clearance requirements. Contact asp@samtec.com

Note: Some sizes, styles and options are non-standard, non-returnable.

Due to technical progress, all designs, specifications and components are subject to change without notice.

WWW.SAMTEC.COM

All parts within this catalog are built to Samtec's specifications. Customer specific requirements must be approved by Samtec and identified in a Samtec customer-specific drawing to apply.

Mouser Electronics

Authorized Distributor

Click to View Pricing, Inventory, Delivery & Lifecycle Information:

[Samtec:](#)

[MPPT-02-01-01-T-RA-SD](#) [MPPT-08-01-02-L-RA-SD-TR](#) [MPPT-10-01-02-L-RA-SD](#)