

# Customer Information Sheet

DRAWING No.: M80-879XXXX

SHEET 2 OF 2

IF IN DOUBT - ASK

©

NOT TO SCALE

THIRD ANGLE PROJECTION

ALL DIMENSIONS IN mm

**SPECIFICATIONS:****MATERIAL:**MOULDING = GLASS-FILLED PBT,  
UL94V-0, BLACK

CONTACTS = PHOSPHOR BRONZE

LATCH = BERYLLIUM COPPER

**FINISH:****CONTACTS:**

05 = 0.75µ GOLD

22 = 0.75µ GOLD ON CONTACT AREA.

3.0µ 90/10 TIN/LEAD ON TAILS

LATCH = 1.25µ NICKEL

**MECHANICAL:**

DURABILITY = 500 OPERATIONS

INSERTION FORCE (Ø0.5mm GAUGE) = 2.8N MAX

WITHDRAWAL FORCE (Ø0.5mm GAUGE) = 0.2N MIN

**PACKING:**

TUBE

**ELECTRICAL:**

CURRENT RATING AT 25°C = 3.0A MAX.

CURRENT RATING AT 85°C = 2.2A MAX.

WORKING VOLTAGE = 800V AC/DC

VOLTAGE PROOF = 1200V AC/DC

CONTACT RESISTANCE (INITIAL) = 20 mΩ MAX.

CONTACT RESISTANCE (AFTER CONDITIONING) = 25 mΩ MAX.

INSULATION RESISTANCE (INITIAL) = 1000 MΩ MIN.

INSULATION RESISTANCE (AFTER CONDITIONING) = 100 MΩ MIN.

**ENVIRONMENTAL:**

TEMPERATURE RANGE = -55°C TO +125°C

FOR COMPLETE SPECIFICATION, SEE COMPONENT  
SPECIFICATION C005XX (LATEST ISSUE)**NOTES:**

- 2-OFF STRAIN RELIEF STRAPS M80-0030006 CAN BE ORDERED SEPARATELY IF REQUIRED.
- FOR RoHS COMPLIANT EQUIVALENT PRODUCT USE M80-852XXXX.

BRITISH STANDARD ORDER CODE: TO BS9525 F0033

**B5743-1XX-M-T-X**

TOTAL No. OF WAYS

02 - 07, 17, 22.

**FINISH:**

0 = SELECTIVE GOLD

2 = GOLD

ORDER CODE:

**M80-879XXXX**

TOTAL No. OF WAYS

02 - 07, 17, 22.

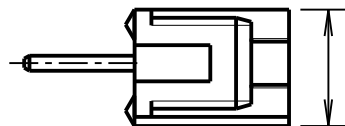
**FINISH:**

05 = GOLD

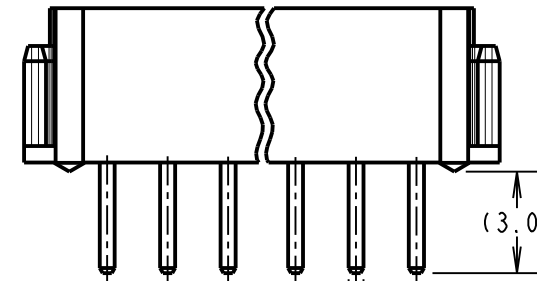
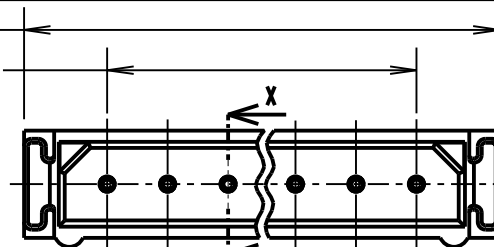
22 = SELECTIVE GOLD

2.00 x No. OF WAYS + 3.55 MAX

2.00 x No OF PITCHES

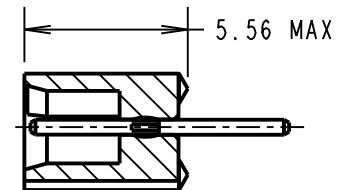


3.98 MAX



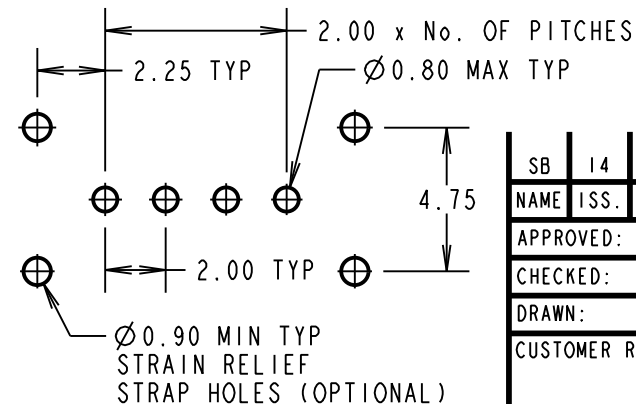
2.00 TYP

Ø0.50 TYP



SECTION X-X

5.56 MAX



RECOMMENDED PCB LAYOUT

SB	14	06.03.12	11672
NAME	ISS.	DATE	C/NOTE
APPROVED: S.BENNETT			
CHECKED: S.FLOWER			
DRAWN: W.J.BOURNE			
CUSTOMER REF.:			
ASSEMBLY DRG:			

**HARWIN**www.harwin.com  
technical@harwin.comTHIS DRAWING AND ANY  
INFORMATION OR DESCRIPTIVE  
MATTER SET OUT HEREON ARE  
CONFIDENTIAL AND COPYRIGHT  
PROPERTY OF THE HARWIN  
GROUP AND MUST NOT BE  
DISCLOSED, LOANED, COPIED  
OR USED FOR MANUFACTURING,  
TENDERING OR FOR ANY  
OTHER PURPOSE WITHOUT  
THEIR WRITTEN PERMISSION.**TOLERANCES**

X. = ±1mm

X.X = ±0.25mm

X.XX = ±0.10mm

X.XXX = ±0.01mm

ANGLES = ±5°

UNLESS STATED

**MATERIAL:**

SEE ABOVE

**FINISH:**

SEE ABOVE

**S/AREA:**mm<sup>2</sup>TITLE: DATAMATE 2mm PITCH  
VERTICAL MALE PC TAIL SIL  
ASSEMBLY - UNLATCHED

DRAWING NUMBER:

**M80-879XXXX**SHT  
2 OF 2

# Mouser Electronics

Authorized Distributor

Click to View Pricing, Inventory, Delivery & Lifecycle Information:

Harwin:

[B5743-117-M-T-0](#) [B5743-104-M-T-0](#) [B5743-106-M-T-0](#) [B5743-102-M-T-0](#) [B5743-105-M-T-0](#) [B5743-103-M-T-0](#)  
[B5743-107-M-T-0](#) [M80-8790322](#) [M80-8790222](#) [M80-8790722](#) [M80-8790522](#) [M80-8791722](#) [M80-8790205](#) [M80-8790622](#) [M80-8792222](#) [M80-8790422](#) [B5743-103-M-T-2](#) [M80-8791705](#) [B5743-106-M-T-2](#) [B5743-104-M-T-2](#)