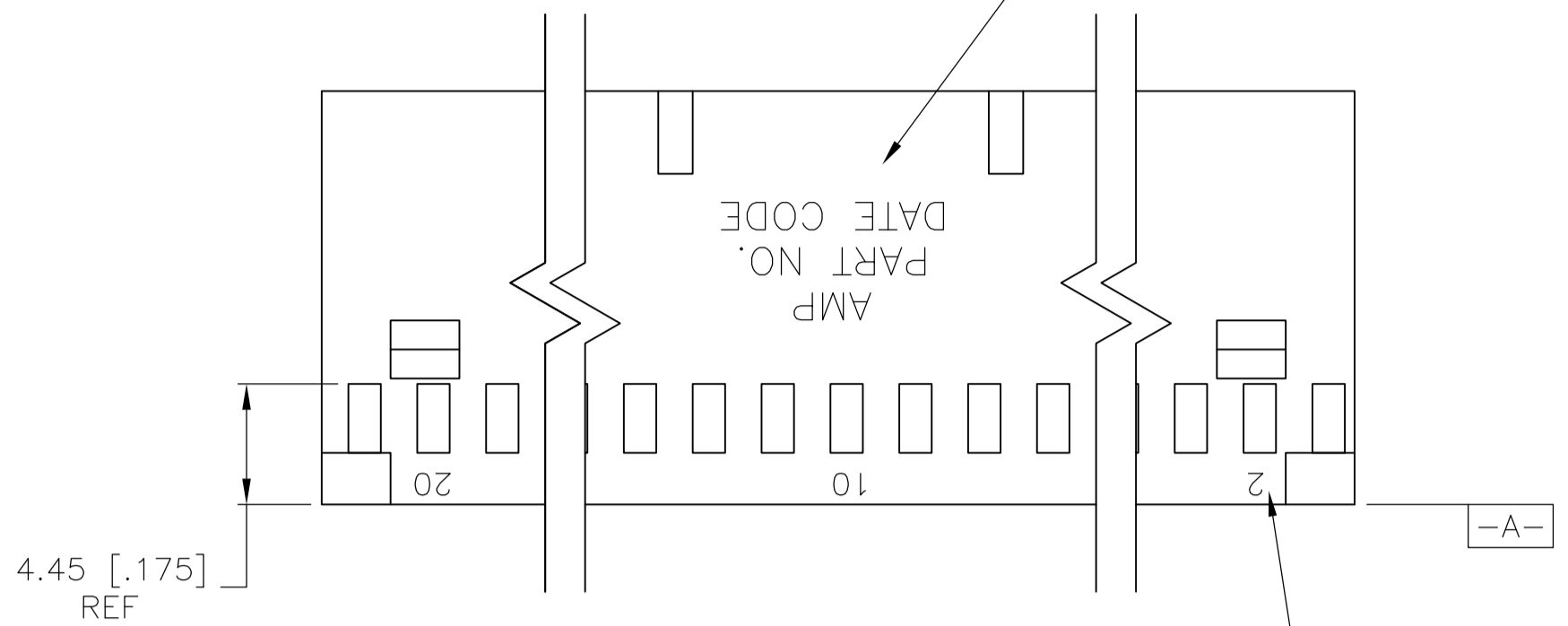
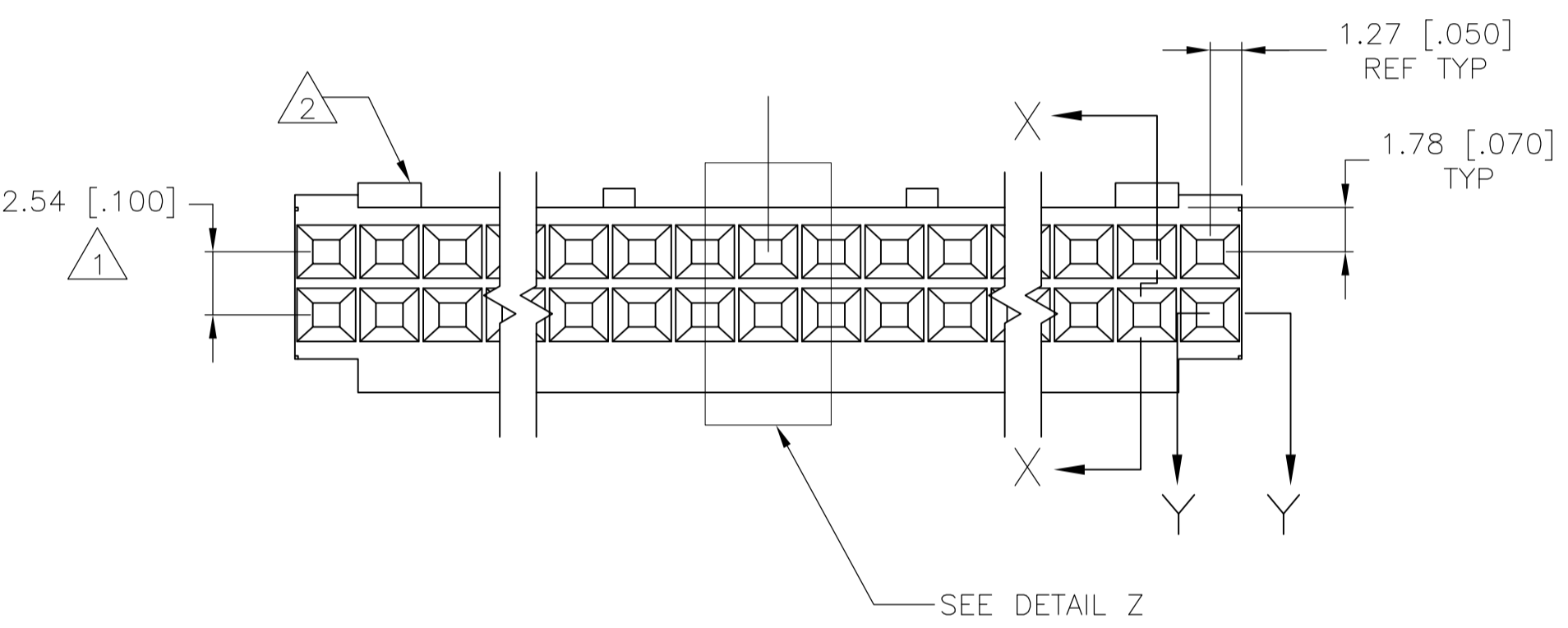


| LOC | | DIST | | REVISIONS | | | | |
|-----|----|------|-------------|---------------|---------|-----|------|--|
| AD | 00 | P | LTR | DESCRIPTION | DATE | DMN | APVO | |
| | | W4 | REVISED PER | ECO-13-004115 | 07MAR13 | KH | JO | |

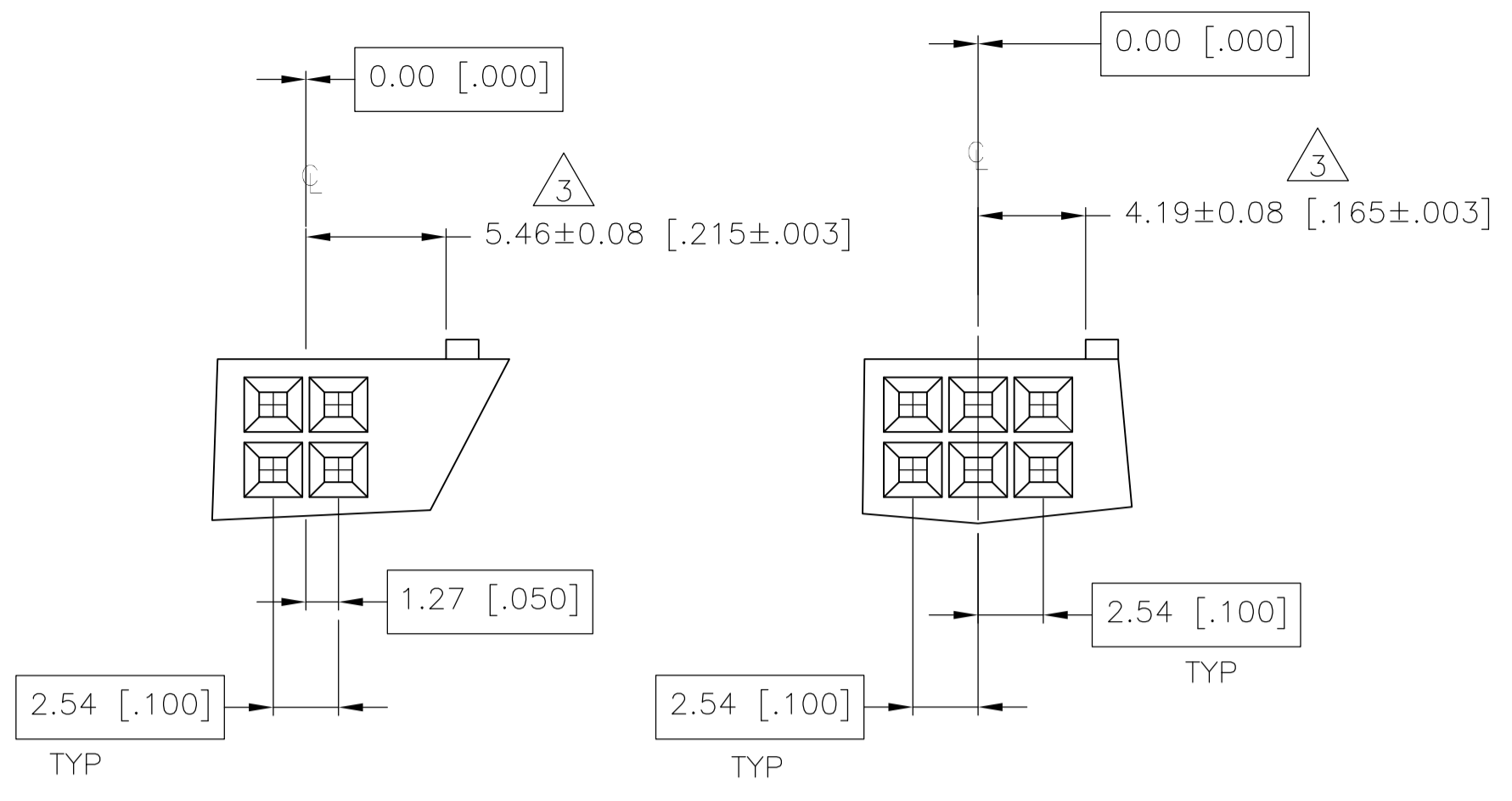
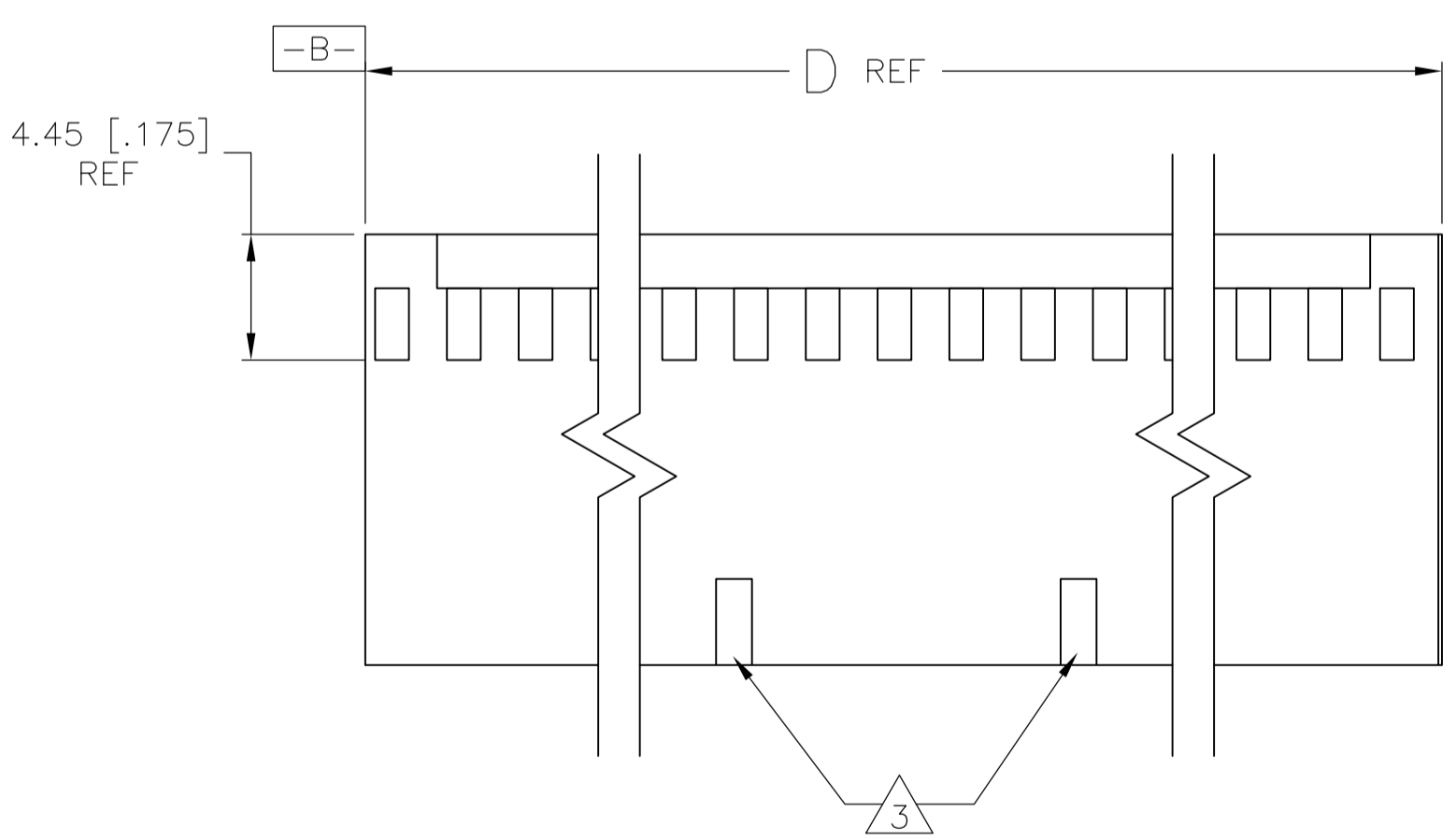
"AMP", PART NO. & DATE CODE
 MARKED (WHITE) 1.58±0.38 [.062±.015] HIGH CHARS.
 IN AREA SHOWN WHEN HOUSING SIZE PERMITS



CAVITY IDENT. MARKED (WHITE)
 1.17±0.38 [.046±.015] HIGH CHARS. SECOND AND
 EVERY FIFTH CAVITY, ONE SIDE.



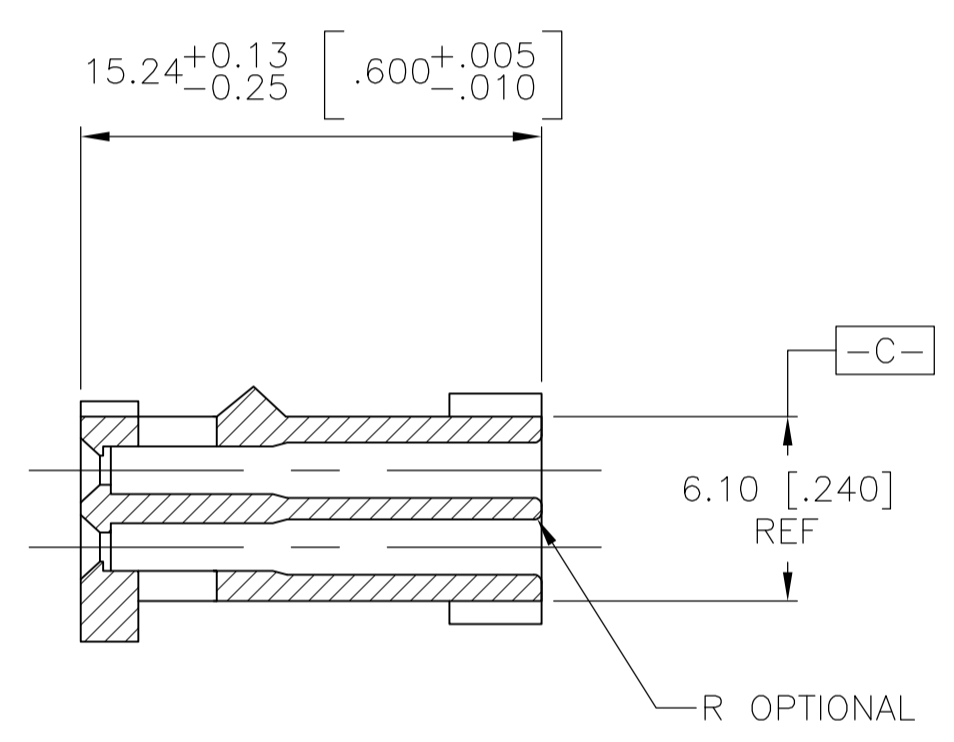
SEE DETAIL Z



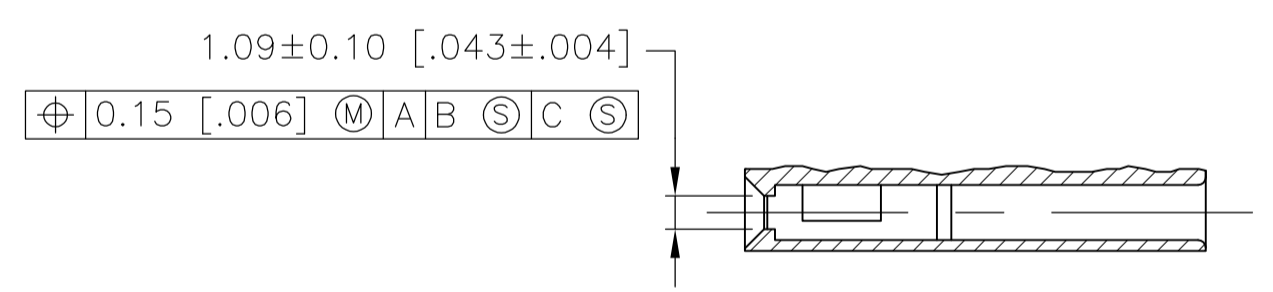
BASIC DIMENSION FOR
 ODD NUMBER OF SPACES
 (SEE THE TABLE)

BASIC DIMENSION FOR
 EVEN NUMBER OF SPACES
 (SEE THE TABLE)

DETAIL Z



SECTION X-X



SECTION Y-Y
 ROTATED 90° CLOCKWISE

- 2 SEE TABLE FOR NUMBER OF DETENTS. DETENT ON THIS SIDE FOR HOUSINGS WITH ONE DETENT.
- 3 STRAIN RELIEF LOCATORS WILL APPEAR ON 20 POSITION AND LARGER HOUSINGS.
- 4 USE EXTRACTION TOOL 91052-1 TO REMOVE RECEPTACLE CONTACTS.
- 5 THESE HOUSINGS ARE COMPATIBLE WITH ANY MOD II SHROUDED HEADER.
- 6 HOUSINGS WILL ACCOMMODATE ALL MOD IV, IV.5 AND MOD V CONTACTS.
- 7 MATERIAL: FLAME RETARDANT GLASS FILLED NYLON, COLOR: BLACK PER ASTM D4066.
- 8 OBSOLETE PARTS: OBSOLETE CIS STREAMLINING PER D.RENAUD/D.SINISI

| MARKING | NO. OF DETENTS | D | NO. OF SPACES | NO. OF POSN | PART NUMBER | |
|------------|----------------|---|---------------|-------------|-------------|-----------|
| 8 OBSOLETE | ALL | 2 | 81.28 [3.200] | 31 | 64 | 6-87631-6 |
| | NONE | 2 | 81.28 [3.200] | 31 | 64 | 6-87631-5 |
| | ALL | 2 | 73.66 [2.900] | 28 | 58 | 6-87631-4 |
| 8 OBSOLETE | NONE | 2 | 73.66 [2.900] | 28 | 58 | 6-87631-3 |
| | | | | | | 6-87631-2 |
| | | | | | | 6-87631-1 |
| | ALL | 2 | 60.96 [2.400] | 23 | 48 | 6-87631-0 |
| 8 OBSOLETE | NONE | 2 | 60.96 [2.400] | 23 | 48 | 5-87631-9 |
| 8 OBSOLETE | ALL | 2 | 88.90 [3.500] | 35 | 72 | 5-87631-8 |
| | NONE | 2 | 88.90 [3.500] | 35 | 72 | 5-87631-7 |
| | ALL | 2 | 88.90 [3.500] | 34 | 70 | 5-87631-6 |
| | NONE | 2 | 88.90 [3.500] | 34 | 70 | 5-87631-5 |
| | ALL | 2 | 83.82 [3.300] | 32 | 66 | 5-87631-4 |
| 8 OBSOLETE | NONE | 2 | 83.82 [3.300] | 32 | 66 | 5-87631-3 |
| | ALL | 2 | 76.20 [3.000] | 29 | 60 | 5-87631-2 |
| | NONE | 2 | 76.20 [3.000] | 29 | 60 | 5-87631-1 |
| | | | | | | 5-87631-0 |
| | | | | | | 4-87631-9 |
| | | | | | | 4-87631-8 |
| | | | | | | 4-87631-7 |
| 8 OBSOLETE | ALL | 2 | 68.58 [2.700] | 26 | 54 | 4-87631-6 |
| | NONE | 2 | 68.58 [2.700] | 26 | 54 | 4-87631-5 |
| | ALL | 2 | 66.04 [2.600] | 25 | 52 | 4-87631-4 |
| | NONE | 2 | 66.04 [2.600] | 25 | 52 | 4-87631-3 |
| | ALL | 2 | 63.50 [2.500] | 24 | 50 | 4-87631-2 |
| | NONE | 2 | 63.50 [2.500] | 24 | 50 | 4-87631-1 |
| | ALL | 2 | 55.88 [2.200] | 21 | 44 | 4-87631-0 |
| 8 OBSOLETE | NONE | 2 | 55.88 [2.200] | 21 | 44 | 3-87631-9 |
| | ALL | 2 | 53.34 [2.100] | 20 | 42 | 3-87631-8 |
| | NONE | 2 | 53.34 [2.100] | 20 | 42 | 3-87631-7 |
| | ALL | 2 | 50.80 [2.000] | 19 | 40 | 3-87631-6 |
| | NONE | 2 | 50.80 [2.000] | 19 | 40 | 3-87631-5 |
| | ALL | 2 | 48.26 [1.900] | 18 | 38 | 3-87631-4 |
| | NONE | 2 | 48.26 [1.900] | 18 | 38 | 3-87631-3 |
| | ALL | 2 | 45.72 [1.800] | 17 | 36 | 3-87631-2 |
| | NONE | 2 | 45.72 [1.800] | 17 | 36 | 3-87631-1 |
| | ALL | 2 | 43.18 [1.700] | 16 | 34 | 3-87631-0 |
| | NONE | 2 | 43.18 [1.700] | 16 | 34 | 2-87631-9 |
| | ALL | 2 | 40.64 [1.600] | 15 | 32 | 2-87631-8 |
| | NONE | 2 | 40.64 [1.600] | 15 | 32 | 2-87631-7 |
| | ALL | 2 | 38.10 [1.500] | 14 | 30 | 2-87631-6 |
| | NONE | 2 | 38.10 [1.500] | 14 | 30 | 2-87631-5 |
| | ALL | 2 | 35.56 [1.400] | 13 | 28 | 2-87631-4 |
| | NONE | 2 | 35.56 [1.400] | 13 | 28 | 2-87631-3 |
| | ALL | 2 | 33.02 [1.300] | 12 | 26 | 2-87631-2 |
| | NONE | 2 | 33.02 [1.300] | 12 | 26 | 2-87631-1 |
| | ALL | 2 | 30.48 [1.200] | 11 | 24 | 2-87631-0 |
| | NONE | 2 | 30.48 [1.200] | 11 | 24 | 1-87631-9 |
| | ALL | 2 | 27.94 [1.100] | 10 | 22 | 1-87631-8 |
| | NONE | 2 | 27.94 [1.100] | 10 | 22 | 1-87631-7 |
| | ALL | 2 | 25.40 [1.000] | 9 | 20 | 1-87631-6 |
| | NONE | 2 | 25.40 [1.000] | 9 | 20 | 1-87631-5 |
| | ALL | 1 | 22.86 [.900] | 8 | 18 | 1-87631-4 |
| | NONE | 1 | 22.86 [.900] | 8 | 18 | 1-87631-3 |
| | ALL | 1 | 20.32 [.800] | 7 | 16 | 1-87631-2 |
| | NONE | 1 | 20.32 [.800] | 7 | 16 | 1-87631-1 |
| | ALL | 1 | 17.78 [.700] | 6 | 14 | 1-87631-0 |
| | NONE | 1 | 17.78 [.700] | 6 | 14 | 87631-9 |
| | ALL | 1 | 15.24 [.600] | 5 | 12 | 87631-8 |
| | NONE | 1 | 15.24 [.600] | 5 | 12 | 87631-7 |
| | ALL | 1 | 12.70 [.500] | 4 | 10 | 87631-6 |
| | NONE | 1 | 12.70 [.500] | 4 | 10 | 87631-5 |
| | ALL | 1 | 10.16 [.400] | 3 | 8 | 87631-4 |
| | NONE | 1 | 10.16 [.400] | 3 | 8 | 87631-3 |
| | ALL | 1 | 7.62 [.300] | 2 | 6 | 87631-2 |
| | NONE | 1 | 7.62 [.300] | 2 | 6 | 87631-1 |

THIS DRAWING IS A CONTROLLED DOCUMENT. DIN E. BRANDBERG 09FEB94
 CHK: S. SHUEY 08NOV94
 APVD: D. DUPLER 08NOV94
 PRODUCT SPEC

TE Connectivity
 CONNECTOR, MOD IV,
 CRIMP SNAP-IN, WITH DETENT

DIMENSIONS: mm [INCHES]
 TOLERANCES UNLESS OTHERWISE SPECIFIED:
 0 PLC ± -
 1 PLC ± ±
 2 PLC ± ± 0.13[.005]
 3 PLC ± ±
 4 PLC ± ±
 ANGLES ± ±

MATERIAL: 7 FINISH

WEIGHT: -
 SIZE: A1
 CAGE CODE: 00779
 DRAWING NO: 87631
 RESTRICTED TO: -

CUSTOMER DRAWING SCALE: 4:1 SHEET 1 OF 1 REV: W4

Mouser Electronics

Authorized Distributor

Click to View Pricing, Inventory, Delivery & Lifecycle Information:

[TE Connectivity:](#)

[87631-2](#)