

THIS DRAWING IS UNPUBLISHED.	RELEASED FOR PUBLICATION	20
© COPYRIGHT 20	BY -	ALL RIGHTS RESERVED.

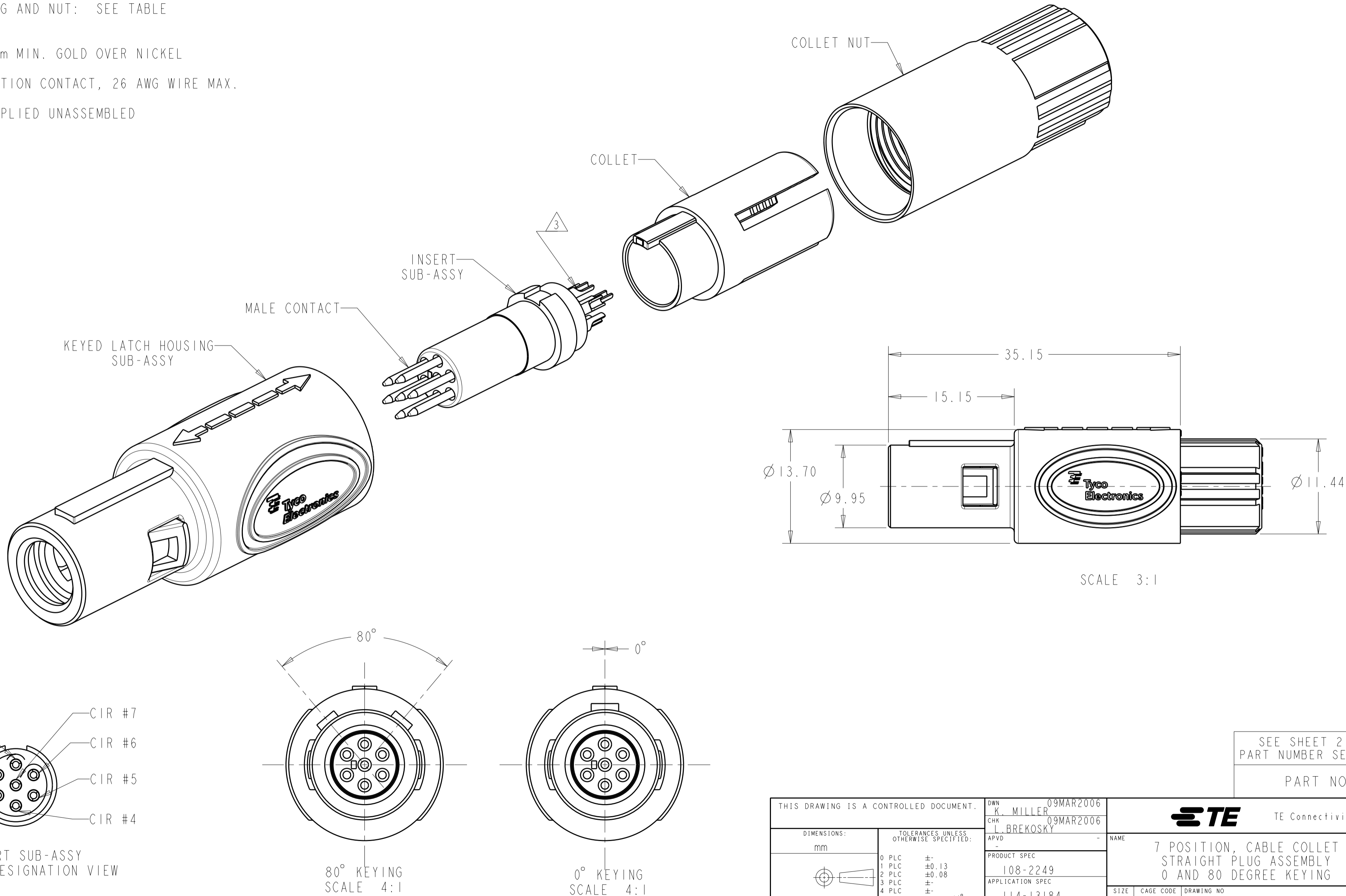
LOC	DIST	REVISIONS					
AD	00	P	LTR	DESCRIPTION	DATE	DWN	APVD
			B3	REVISED PER ECO-11-005027	12MAR2011	RK	HMR

1 MATERIAL:
CONTACT: BRASS
LATCH HOUSING, INSERT, COLLET, COLLET NUT:
UL 94V-0 RATED THERMOPLASTIC
COLOR:
COLLET AND INSERT: GRAY
LATCH HOUSING AND NUT: SEE TABLE

2 FINISH:
CONTACT, 0.75µm MIN. GOLD OVER NICKEL

3 SOLDER TERMINATION CONTACT, 26 AWG WIRE MAX.

4. PRODUCT IS SUPPLIED UNASSEMBLED



SEE SHEET 2 FOR
PART NUMBER SELECTION

PART NO.

THIS DRAWING IS A CONTROLLED DOCUMENT.		DWN K. MILLER CHK L. BREKOSKY APVD -	09MAR2006 09MAR2006 -	TE Connectivity		
DIMENSIONS: mm		TOLERANCES UNLESS OTHERWISE SPECIFIED:		NAME		
0 PLC ±		1 PLC ±0.13		PRODUCT SPEC		
2 PLC ±0.08		3 PLC ±		108-2249		
4 PLC ±		ANGLES ±1°		APPLICATION SPEC		
FINISH		114-13184		WEIGHT		
1		2		CUSTOMER DRAWING		
				SIZE A2	CAGE CODE 00779	DRAWING NO. C-1877847
				RESTRICTED TO -		
				SCALE 4:1	SHEET 1	OF 3
				REV B3		

4

3

2

1

THIS DRAWING IS UNPUBLISHED.

RELEASED FOR PUBLICATION

20

© COPYRIGHT 20

BY -

ALL RIGHTS RESERVED.

LOC

DIST

AD

00

REVISIONS

P	LTR	DESCRIPTION	DATE	DWN	APVD
	-	SEE SHEET 1	-	-	-

Ø 2.7-Ø 3.9

BLUE

GRAY

80°

7-1877847-2

Ø 4.0-Ø 5.2

BLUE

GRAY

80°

7-1877847-1

Ø 5.3-Ø 6.5

BLUE

GRAY

80°

7-1877847-0

Ø 2.7-Ø 3.9

BLUE

GRAY

0°

6-1877847-9

Ø 4.0-Ø 5.2

BLUE

GRAY

0°

6-1877847-8

Ø 5.3-Ø 6.5

BLUE

GRAY

0°

6-1877847-7

Ø 2.7-Ø 3.9

BLUE

BLACK

80°

6-1877847-6

Ø 4.0-Ø 5.2

BLUE

BLACK

80°

6-1877847-5

Ø 5.3-Ø 6.5

BLUE

BLACK

80°

6-1877847-4

Ø 2.7-Ø 3.9

BLUE

BLACK

0°

6-1877847-3

Ø 4.0-Ø 5.2

BLUE

BLACK

0°

6-1877847-2

Ø 5.3-Ø 6.5

BLUE

BLACK

0°

6-1877847-1

Ø 2.7-Ø 3.9

GREEN

GRAY

80°

6-1877847-0

Ø 4.0-Ø 5.2

GREEN

GRAY

80°

5-1877847-9

Ø 5.3-Ø 6.5

GREEN

GRAY

80°

5-1877847-8

Ø 2.7-Ø 3.9

GREEN

GRAY

0°

5-1877847-7

Ø 4.0-Ø 5.2

GREEN

GRAY

0°

5-1877847-6

Ø 5.3-Ø 6.5

GREEN

GRAY

0°

5-1877847-5

Ø 2.7-Ø 3.9

GREEN

BLACK

80°

5-1877847-4

Ø 4.0-Ø 5.2

GREEN

BLACK

80°

5-1877847-3

Ø 5.3-Ø 6.5

GREEN

BLACK

80°

5-1877847-2

Ø 2.7-Ø 3.9

GREEN

BLACK

0°

5-1877847-1

Ø 4.0-Ø 5.2

GREEN

BLACK

0°

5-1877847-0

Ø 5.3-Ø 6.5

GREEN

BLACK

0°

4-1877847-9

Ø 2.7-Ø 3.9

YELLOW

GRAY

80°

4-1877847-8

Ø 4.0-Ø 5.2

YELLOW

GRAY

80°

4-1877847-7

Ø 5.3-Ø 6.5

YELLOW

GRAY

80°

4-1877847-6

Ø 2.7-Ø 3.9

YELLOW

GRAY

0°

4-1877847-5

Ø 4.0-Ø 5.2

YELLOW

GRAY

0°

4-1877847-4

Ø 5.3-Ø 6.5

YELLOW

GRAY

0°

4-1877847-3

Ø 2.7-Ø 3.9

YELLOW

BLACK

80°

4-1877847-2

Ø 4.0-Ø 5.2

YELLOW

BLACK

80°

4-1877847-1

Ø 5.3-Ø 6.5

YELLOW

BLACK

80°

4-1877847-0

Ø 2.7-Ø 3.9

YELLOW

BLACK

0°

3-1877847-9

Ø 4.0-Ø 5.2

YELLOW

BLACK

0°

3-1877847-8

Ø 5.3-Ø 6.5

YELLOW

BLACK

0°

3-1877847-7

CABLE RANGE

COLLET NUT
COLOR

LATCH HOUSING
COLOR

KEYING

PART NO.

PART NUMBERS 37 THRU 72

Ø 2.7-Ø 3.9

WHITE

GRAY

80°

3-1877847-6

Ø 4.0-Ø 5.2

WHITE

GRAY

80°

3-1877847-5

Ø 5.3-Ø 6.5

WHITE

GRAY

80°

3-1877847-4

Ø 2.7-Ø 3.9

WHITE

GRAY

0°

3-1877847-3

Ø 4.0-Ø 5.2

WHITE

GRAY

0°

3-1877847-2

Ø 5.3-Ø 6.5

WHITE

GRAY

0°

3-1877847-1

Ø 2.7-Ø 3.9

WHITE

BLACK

80°

3-1877847-0

Ø 4.0-Ø 5.2

WHITE

BLACK

80°

2-1877847-9

Ø 5.3-Ø 6.5

WHITE

BLACK

80°

2-1877847-8

Ø 2.7-Ø 3.9

WHITE

BLACK

0°

2-1877847-7

Ø 4.0-Ø 5.2

WHITE

BLACK

0°

2-1877847-6

Ø 5.3-Ø 6.5

WHITE

BLACK

0°

2-1877847-5

Ø 2.7-Ø 3.9

RED

GRAY

80°

2-1877847-4

Ø 4.0-Ø 5.2

RED

GRAY

80°

2-1877847-3

Ø 5.3-Ø 6.5

RED

GRAY

80°

2-1877847-2

Ø 2.7-Ø 3.9

RED

GRAY

0°

2-1877847-1

Ø 4.0-Ø 5.2

RED

GRAY

0°

2-1877847-0

Ø 5.3-Ø 6.5

RED

GRAY

0°

1-1877847-9

Ø 2.7-Ø 3.9

RED

BLACK

80°

1-1877847-8

Ø 4.0-Ø 5.2

RED

BLACK

80°

1-1877847-7

Ø 5.3-Ø 6.5

RED

BLACK

80°

1-1877847-6

Ø 2.7-Ø 3.9

RED

BLACK

0°

1-1877847-5

Ø 4.0-Ø 5.2

RED

BLACK

0°

1-1877847-4

Ø 5.3-Ø 6.5

RED

BLACK

0°

1-1877847-3

Ø 2.7-Ø 3.9

GRAY

GRAY

80°

1-1877847-2

Ø 4.0-Ø 5.2

GRAY

GRAY

80°

1-1877847-1

Ø 5.3-Ø 6.5

GRAY

GRAY

80°

1-1877847-0

Ø 2.7-Ø 3.9

GRAY

GRAY

0°

1877847-9

Ø 4.0-Ø 5.2

GRAY

GRAY

0°

1877847-8

Ø 5.3-Ø 6.5

GRAY

GRAY

0°

1877847-7

Ø 2.7-Ø 3.9

BLACK

BLACK

80°

1877847-6

Ø 4.0-Ø 5.2

BLACK

BLACK

80°

1877847-5

Ø 5.3-Ø 6.5

BLACK

BLACK

80°

1877847-4

Ø 2.7-Ø 3.9

BLACK

BLACK

0°

1877847-3

Ø 4.0-Ø 5.2

BLACK

BLACK

0°

1877847-2

Ø 5.3-Ø 6.5

BLACK

BLACK

0°

1877847-1

CABLE RANGE

COLLET NUT
COLOR

LATCH HOUSING
COLOR

KEYING

PART NO.

PART NUMBERS 1 THRU 36

THIS DRAWING IS A CONTROLLED DOCUMENT.

DWN

K. MILLER

09MAR2006

CHK

L. BREKOSKY

09MAR2006

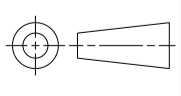
APVD

-

-

DIMENSIONS:

mm



TOLERANCES UNLESS OTHERWISE SPECIFIED:

0 PLC ±-

1 PLC ±0.13

2 PLC ±0.08

3 PLC ±-

4 PLC ±-

ANGLES ±1°

FINISH

MATERIAL

-

PRODUCT SPEC

108-2249

APPLICATION SPEC

114-13184

WEIGHT

-

CUSTOMER DRAWING

NAME

7 POSITION, CABLE COLLET
STRAIGHT PLUG ASSEMBLY
0 AND 80 DEGREE KEYING

SIZE

A2

CAGE CODE

00779

DRAWING NO

1877847

RESTRICTED TO

-

SCALE

4:1

SHEET

2

OF

3

REV

B3

TE Connectivity

1471-9 (3/11)

4

3

2

1

THIS DRAWING IS UNPUBLISHED.

RELEASED FOR PUBLICATION

20

© COPYRIGHT 20

BY -

ALL RIGHTS RESERVED.

LOC

DIST

AD

00

REVISIONS

P	LTR	DESCRIPTION	DATE	DWN	APVD
	-	SEE SHEET 1	-	-	-

Ø 2.7-Ø 3.9	BLACK	GRAY	80°	8-1877847-4
Ø 4.0-Ø 5.2	BLACK	GRAY	80°	8-1877847-3
Ø 5.3-Ø 6.5	BLACK	GRAY	80°	8-1877847-2
Ø 2.7-Ø 3.9	BLACK	GRAY	0°	8-1877847-1
Ø 4.0-Ø 5.2	BLACK	GRAY	0°	8-1877847-0
Ø 5.3-Ø 6.5	BLACK	GRAY	0°	7-1877847-9
Ø 2.7-Ø 3.9	GRAY	BLACK	80°	7-1877847-8
Ø 4.0-Ø 5.2	GRAY	BLACK	80°	7-1877847-7
Ø 5.3-Ø 6.5	GRAY	BLACK	80°	7-1877847-6
Ø 2.7-Ø 3.9	GRAY	BLACK	0°	7-1877847-5
Ø 4.0-Ø 5.2	GRAY	BLACK	0°	7-1877847-4
Ø 5.3-Ø 6.5	GRAY	BLACK	0°	7-1877847-3
CABLE RANGE	COLLET NUT COLOR	LATCH HOUSING COLOR	KEYING	PART NO.
PART NUMBERS 73 THRU 84				

THIS DRAWING IS A CONTROLLED DOCUMENT.

DWN
K. MILLER
CHK
L. BREKOSKY
APVD
-
PRODUCT SPEC
108-2249
APPLICATION SPEC
114-13184
WEIGHT
-
CUSTOMER DRAWING

DWN
09MAR2006
CHK
09MAR2006
APVD
-
PRODUCT SPEC
108-2249
APPLICATION SPEC
114-13184
WEIGHT
-
CUSTOMER DRAWING

NAME
7 POSITION, CABLE COLLET
STRAIGHT PLUG ASSEMBLY
0 AND 80 DEGREE KEYING
SIZE
A2
CAGE CODE
00779
DRAWING NO
1877847
RESTRICTED TO
-
SCALE
4:1
SHEET
3
OF
3
REV
B3

DIMENSIONS:
mm

MATERIAL
-

TOLERANCES UNLESS OTHERWISE SPECIFIED:
0 PLC ±
1 PLC ±0.13
2 PLC ±0.08
3 PLC ±
4 PLC ±
ANGLES ±1°
FINISH

STE

TE Connectivity

1471-9 (3/11)

Mouser Electronics

Authorized Distributor

Click to View Pricing, Inventory, Delivery & Lifecycle Information:

[TE Connectivity:](#)

[2-1877847-7](#)