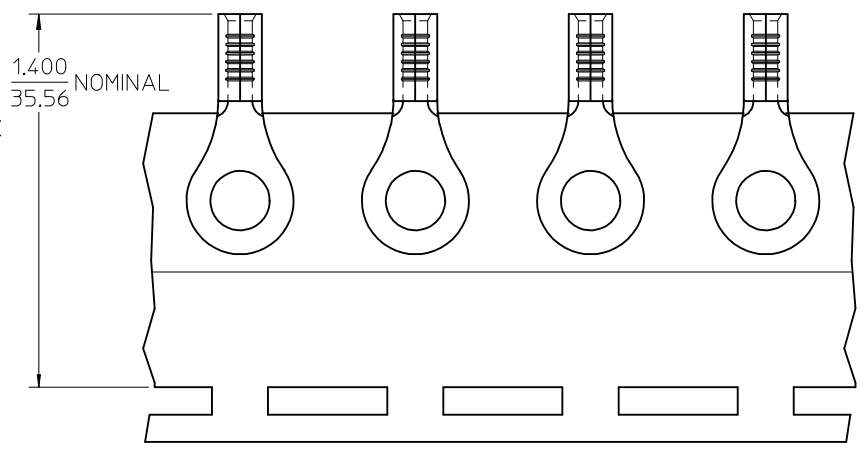
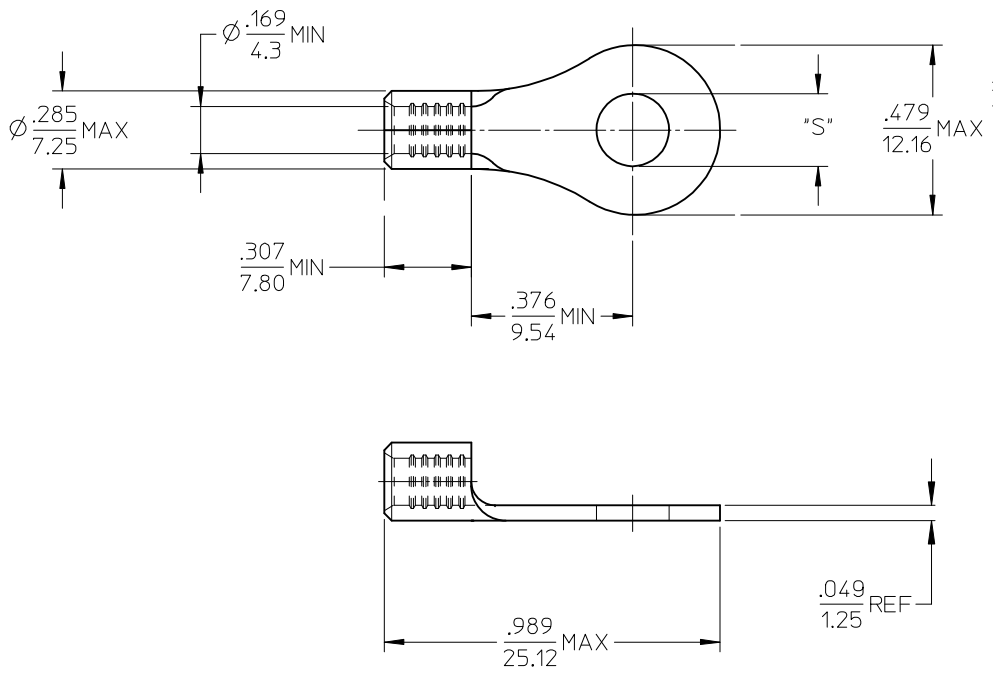


| MATERIAL NO. | ENG. NO. | STUD SIZE | "S" MAX | DESCRIPTION |
|--------------|------------|-----------|-----------|-------------|
| 192030376 | 19203-0376 | 1/4 | .268/6.81 | LOOSE |
| 192030475 | 192030376T | 1/4 | .268/6.81 | TAPE |



PARTS ON TAPE

NOTE(S):

- MATERIAL: STEEL
- WIRE SIZE: 8 AWG (10.0 MM²)
- FINISH: NICKEL PLATING
- PART IS ROHS COMPLIANT.
- AMBIENT OPERATING TEMPERATURE UP TO 900 °F (483 °C).

| | | | | | | | | | | |
|---|-------------------------------|---------------------------------------|----------------------|---|--------------------|--|---------------------------|------------------------|------------------------------|--|
| ADDED OPERATING TEMP EC NO: ETC2007-0297 DRW: JHILLE 2007/03/13 CHKD: JMACNEIL 2007/03/13 APPR: JMACNEIL 2007/03/14 | QUALITY SYMBOLS ▽=0 ▽=0 | GENERAL TOLERANCES (UNLESS SPECIFIED) | | DIMENSION STYLE IN/MM | | SCALE 4:1 | DESIGN UNITS INCH | THIRD ANGLE PROJECTION | | |
| | | 4 PLACES ± --- ± --- | 3 PLACES ± --- ± --- | DRAWN BY DMYRICK | DATE 2005/04/06 | TITLE RING TONGUE TERMINAL, 8 AWG, KRIMPTITE, 900 DEG F (483 DEG C) | | | | |
| | | 2 PLACES ± --- ± --- | 1 PLACE ± --- ± --- | CHECKED BY RDEROSS | DATE 2005/04/06 | | | | | |
| | | ANGULAR ± ---° | | APPROVED BY RDEROSS | | DATE 2005/04/06 | MATERIAL NO. SEE CHART | | DOCUMENT NO. SD-19203-019 | |
| DRAFT WHERE APPLICABLE MUST REMAIN WITHIN DIMENSIONS | | SIZE B | | THIS DRAWING CONTAINS INFORMATION THAT IS PROPRIETARY TO MOLEX INCORPORATED AND SHOULD NOT BE USED WITHOUT WRITTEN PERMISSION | | | | | | |