

4

3

2

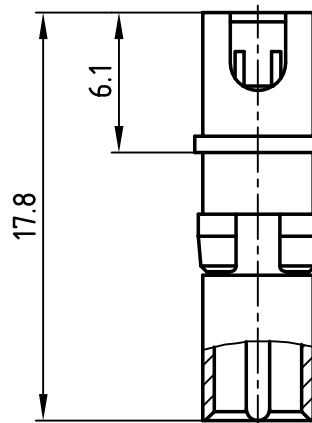
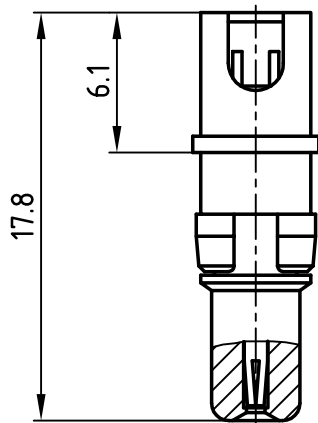
1

used for:

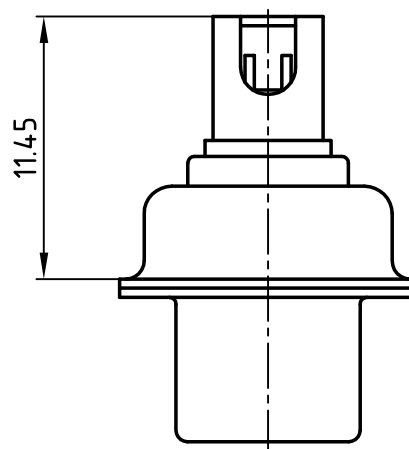
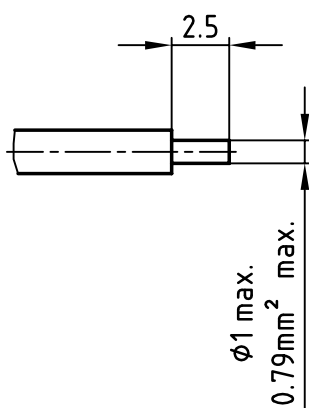
DIN EN 60603

Plug contact
131J14519X

Socket contact
132J14519X



Directive 2002/95/EC
„RoHS“
Compliant



ⓑ MATERIAL:

- ⓒ 1. INSULATOR: PLUG CONTACT: PTFE; BLUE
SOCKET CONTACT: PTFE; WHITE
2. CONTACT: COPPER ALLOY; GOLD PLATED
3. RETAINING RING: COPPER ALLOY; NICKEL PLATED

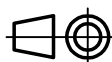
THIS DRAWING MAY NOT BE COPIED OR
REPRODUCED IN ANY WAY, AND MAY NOT
BE PASSED ON TO A THIRD PARTY WITHOUT
WRITTEN PERMISSION.

OWNERSHIP AND COPYRIGHT OF CONEC GmbH

DO NOT ALTER CAD DRAWING BY HAND

1 x c	Ä 3527	14.12.2009	Henneb.	d-old
1 x b	Ä 2434	01.02.2006	Lehmen.	
a	Origin			
rev.	description	date	name	

tolerance



scale: 3:1
material: SEE DRAWING

title:
HIGH VOLTAGE CONTACT
for solder angled
Socket contact + plug contact

dwg no: AutoCAD 2000 DIN-A
4
sh: 1/1

part no: SEE DRAWING

CONEC®

13K1A569

4

3

2

1

Mouser Electronics

Authorized Distributor

Click to View Pricing, Inventory, Delivery & Lifecycle Information:

[CONEC:](#)

[132J14519X](#)