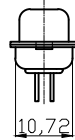
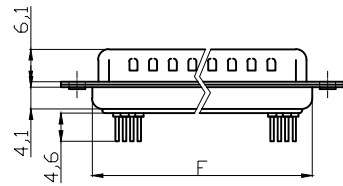
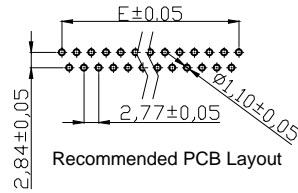
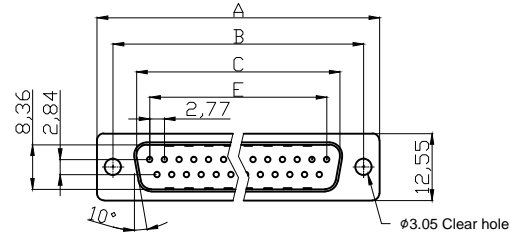


Male



NOTES:

MATERIAL

- 1. Insulator Material: Glass-filled thermoplastic PBT, UL94V-0, Gray
- 2. Contact Material: Brass or Phosphor Bronze
- 3. Shell :Steel, 100 μ" Tin Over 50μ" min Copper
- 4. Clinch Nut :Brass, Nickel Plated

⑤ 5. Contact plating : Gold flash full gold & selective 15u"Au ELECTRICAL

- 1. Current Rating : 3AMP
- 2. Voltage Rating : 250V AC/rms 60Hz
- 3. Contact Resistance: 20mΩ
- 4. Insulation Resistance: 1000MΩ min at 500 VDC
- 5. Withstand Voltage: 1000V AC/rms 60Hz for 1 minute

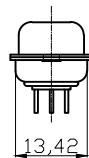
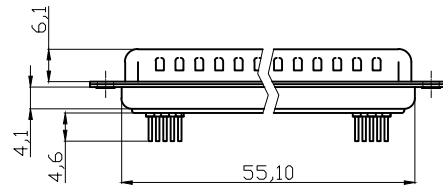
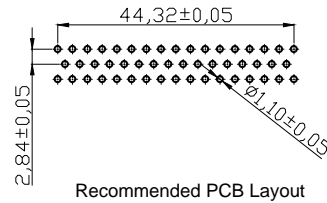
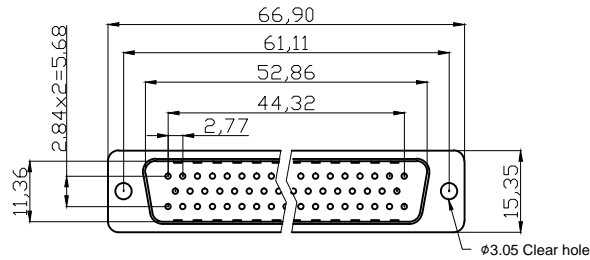
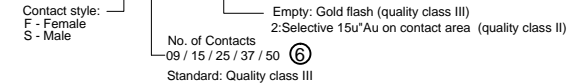
ENVIRONMENTAL

- 1. Temperature Range: -20°C~+105°C

② UL No. E198287

⑤ Order Code:

A-Dx xx PP/Z-x



50 Positions

Dimensions

Positions	A	B	C	E	F
09	30.81	24.99	16.92	11.08	19.20
15	39.20	33.30	25.25	19.39	27.70
25	53.04	47.04	38.96	33.24	41.10
37	69.40	63.50	55.42	49.86	57.30
⑤ 50	66.90	61.11	52.86	44.32	55.10

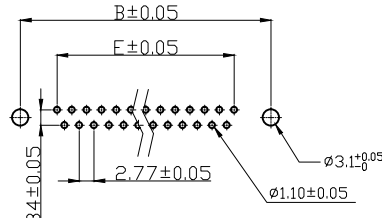
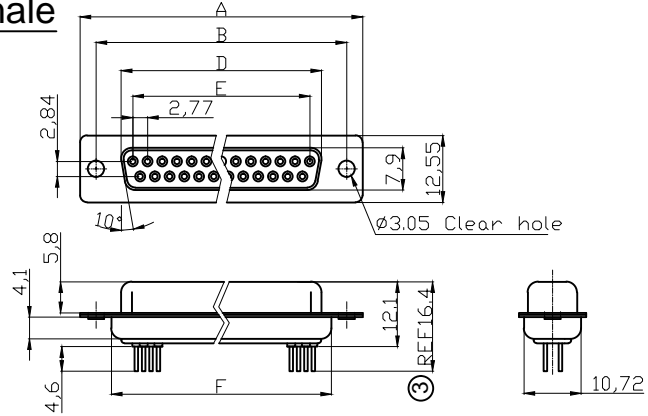
RoHS compliant

Unit:mm

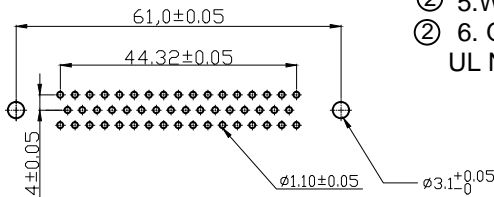
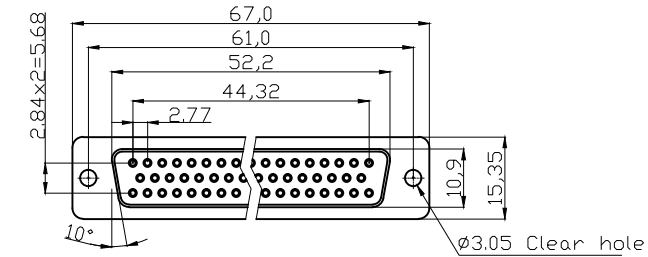
Scale	Free	⑥	Update	18.12.2018	Xavier		Date	Name	Customer-No.
TOLERANCE		⑤	Add the contact plating 15u"Au	01.09.2017	Winnie	Drawn	15.08.2012	Lucas	ASSMANN WSW-No. A-DX XX PP/Z-X
X.	±0.38	④	Add the detail contact plating	23.12.2016	Winnie	Approved	01.09.2017	Winnie	
X.X	±0.25	③	Update the dimension	27.02.2015	Winnie				
X.XX	±0.13	②	Update the operating temperature & UL No.	04.08.2014	Winnie				Drawing-No.
DIM	TOL	①	Update	24.10.2012	Winnie				ASS 4885 CO rev06
X.°	±3°	Id.	Modification	Date	Name				
X.X°	±1.0°								Replace
Angle	TOL						1/2		



Female



RECOMMENDED PCB LAYOUT



RECOMMENDED PCB LAYOUT

NOTES:

MATERIAL

1. Insulator Material: Glass-filled thermoplastic PBT, UL94V-0, Gray
 2. Contact Material: Copper alloy
 3. Shell :Steel, 100 μ" Tin Over 50μ" min Copper
 - ④ 4. Clinch Nut :Brass, Nickel Plated
 5. Contact plating : Gold flash full gold
- ELECTRICAL**
1. Current Rating : 3AMP
 2. Voltage Rating : 250V AC/rms 60Hz
 3. Contact Resistance: 20mΩ Max at 1 AMP DC
 4. Insulation Resistance: 1000MΩ at 500 VDC
 - ② 5. Withstand Voltage: 1000V AC/rms 60Hz for 1 minute
 - ② 6. OPERATING TEMPERATURE: -20°C+105°C
- UL No. E198287

Dimensions

Positions	A±0.15	B±0.10	D±0.13	E±0.08	F±0.10
09	30.81	24.99	16.33	11.08	19.20
15	39.20	33.30	24.70	19.39	27.70
25	53.05	47.04	38.40	33.24	41.10
37	69.40	63.50	54.80	49.86	57.30
⑥ 50	67.0	61.0	52.2	44.32	55.10

50 POSITIONS

RoHS compliant
Unit:mm

Scale	Free	⑥	Update	18.12.2018	Xavier		Date	Name	Customer-No.
TOLERANCE		⑤	Add the contact plating 15u"Au	01.09.2017	Winnie	Drawn	15.08.2012	Lucas	ASSMANN WSW-No. A-DX XX PP/Z-X
X.	±0.38	④	Add the detail contact plating	23.12.2016	Winnie	Approved	01.09.2017	Winnie	
X.X	±0.25	③	Update the dimension	27.02.2015	Winnie				
X.XX	±0.13	②	Update the operating temperature&UL No.	04.08.2014	Winnie				Drawing-No.
DIM	TOL	①	Update	24.10.2012	Winnie				ASS 4885 CO
X.°	±3°								rev06
X.X°	±1.0°								Sheet
Angle	TOL	Id.	Modification	Date	Name			Replace	2/2



Customer-No.	
ASSMANN WSW-No. A-DX XX PP/Z-X	
Drawing-No.	
ASS 4885 CO	rev06
Replace	Sheet 2/2