
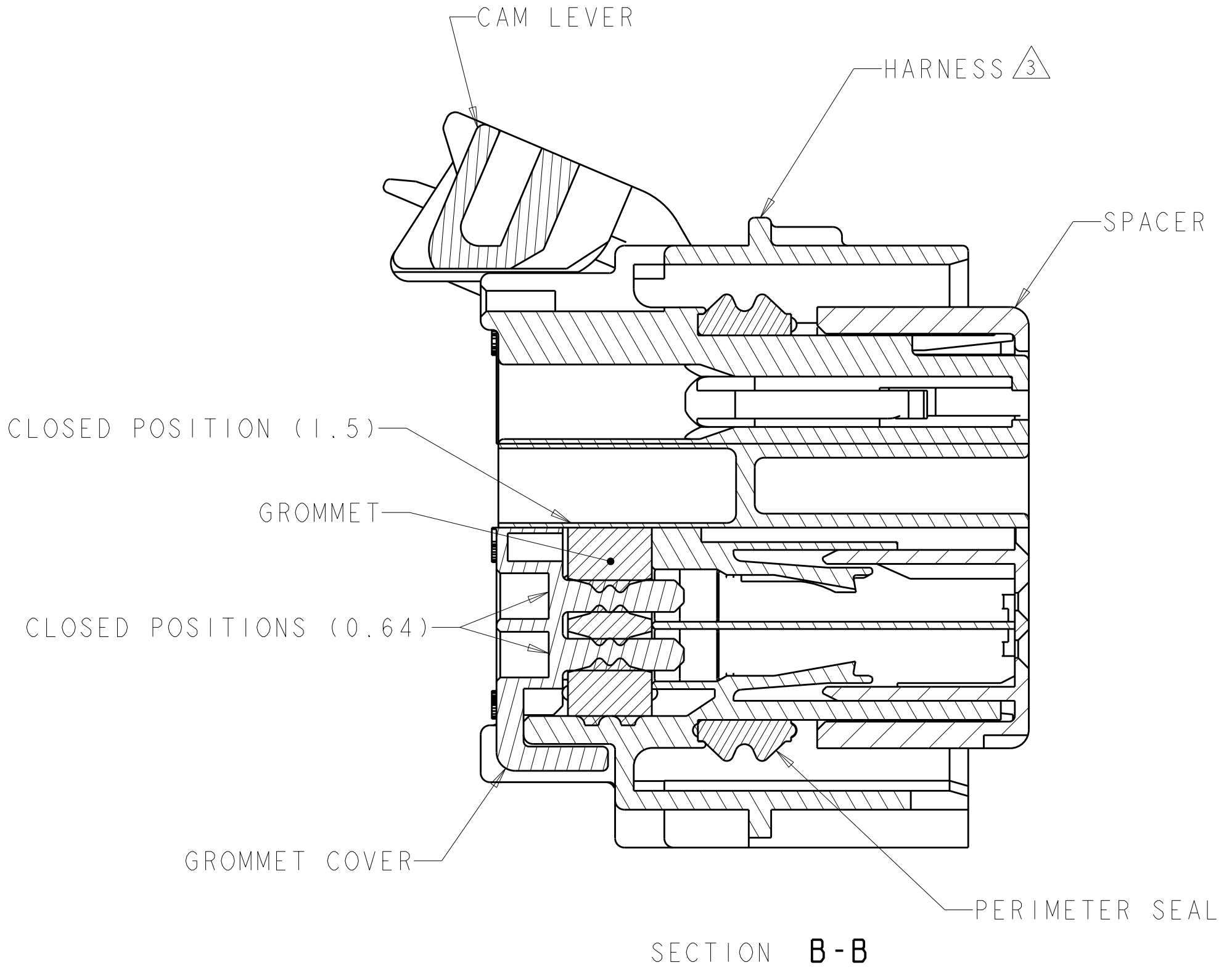
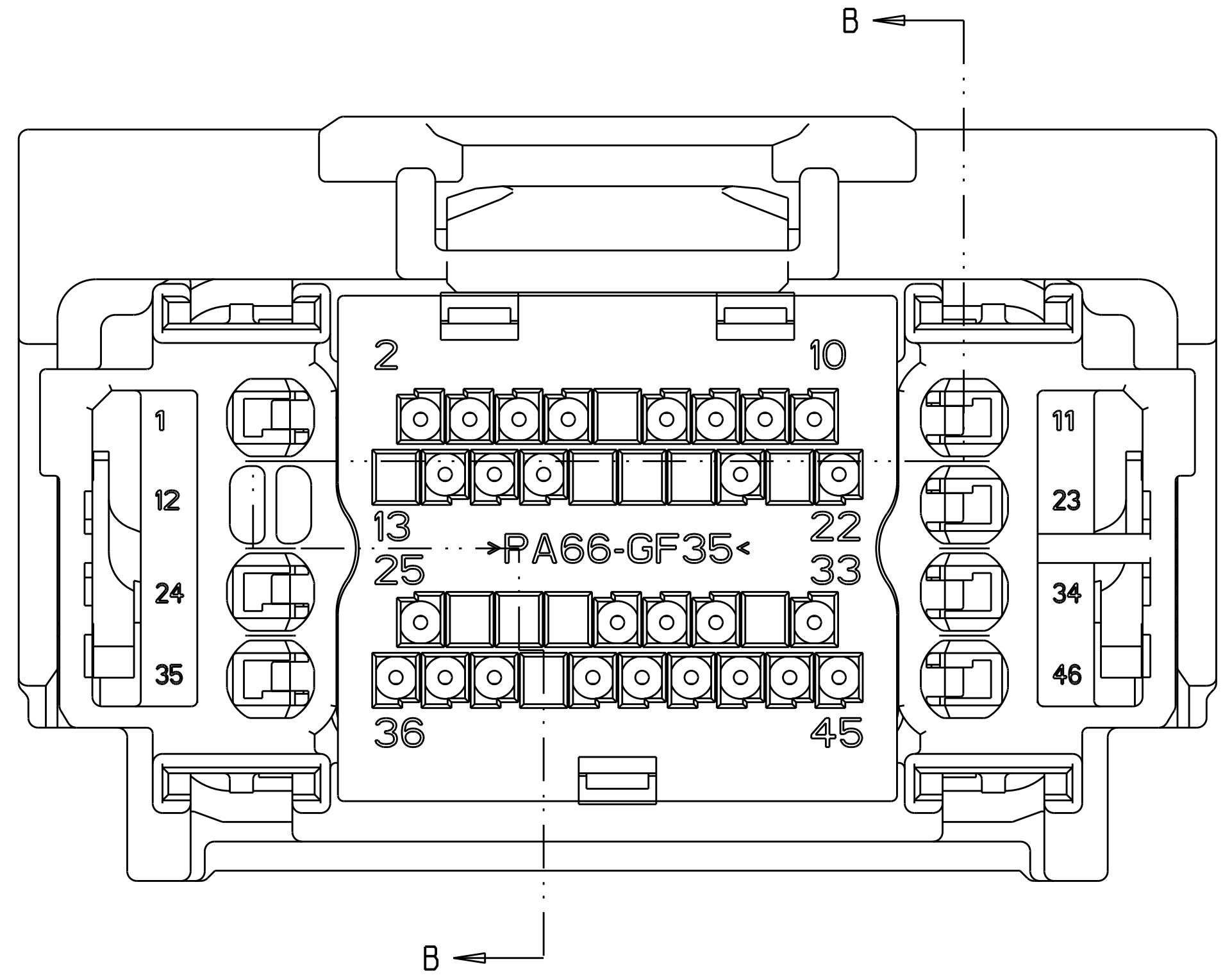
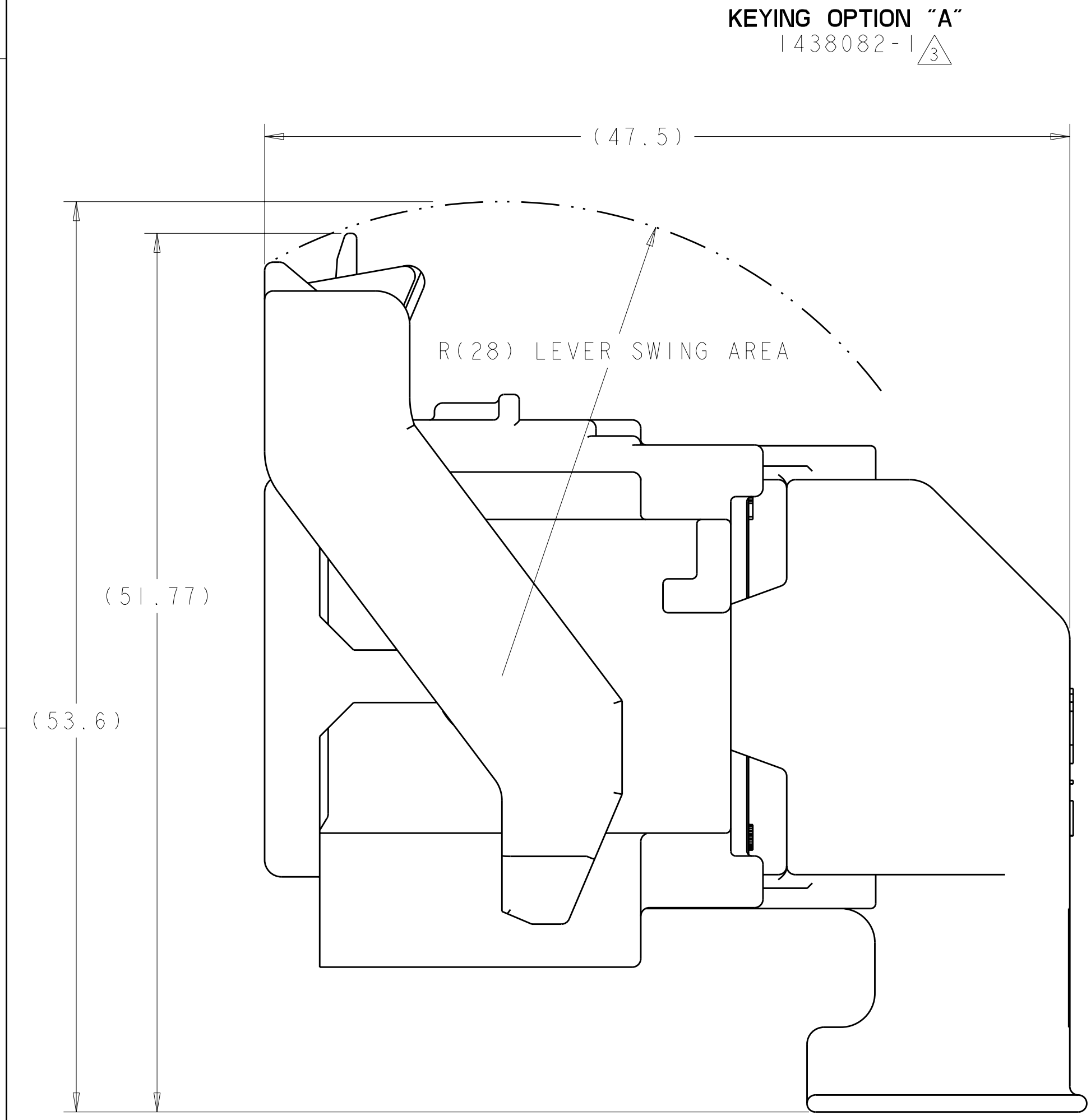


SCALE 1 : 1

KEYING OPTION "B"  
1438082-2 




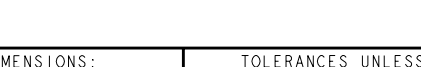
△ MATERIAL:  
HARNES - 35% GLASS FILLED PA66, BLACK  
ALT MAT'L: HARNES - 30% GLASS FILLED sPS, BLACK  
SPACER - 40% GLASS FILLED PPS+PA66, RED  
ALT MAT'L: 30% GLASS FILLED sPS, RED  
ALT MAT'L: 35% GLASS FILLED PA66, RED  
COVER - 35% GLASS FILLED PA66, BLACK  
ALT MAT'L: COVER - 30% GLASS FILLED LCP, BLACK  
CAM LEVER - 35% GLASS FILLED NYLON, GRAY  
GROMMET - SILICONE, BROWN  
PERIMETER SEAL - SILICONE, GREEN

2. CAM LEVER AND SPACER ARE SHIPPED IN PRE-LATCH POSITION.

③ SEE PINOUT CHART ON SHEETS 2, 3 AND 4 FOR CLOSED CIRCUIT CONFIGURATIONS.

④ CAVITIES WITH A NUMERIC SYMBOL INDICATES CLOSED TERMINAL LOCATIONS.  
BLANK CAVITIES INDICATE OPEN TERMINAL HOLE LOCATIONS.


SHOWN WITH CAM LEVER AND SPACER  
IN LOADED POSITION WITH  
OPTIONAL WIRESHIELD

<small>THIS DRAWING IS A CONTROLLED DOCUMENT FOR Tyco Electronics Corporation          IT IS SUBJECT TO CHANGE AND THE CUSTOMER'S ASSEMBLING ORGANIZATION          SHOULD BE CONTACTED FOR THE LATEST REVISION.</small>		DWN <b>R. VESTAL</b> 01AUG2003 CHN <b>D. STRAUSSER</b> 01AUG2003 APVD <b>D. STRAUSSER</b> 01AUG2003		 Tyco Electronics Harrisburg, PA 17105-3608	
DIMENSIONS: mm		TOLERANCES UNLESS OTHERWISE SPECIFIED:		NAME	
		0 PLC ± 1 PLC ±0.3 2 PLC ±0.10 3 PLC ± 4 PLC ± ANGLES ±°		46 Way PCM CONNECTOR HARNESS ASSEMBLY	
MATERIAL SEE TABLE		FINISH SEE TABLE		SIZE CAGE CODE DRAWING NO RESTRICTED TO A 10779 C=1438082 -	
CUSTOMER DRAWING				SCALE 4:1 SHEET 1 OF 5 REV \$1	

LOC	DIST	REVISIONS			
FX	00	P	LYR	DESCRIPTION	DATE
		-	-	SEE SHEET 1	-

45	43			39	37	36	35			31					24					18	17	16		14	13	12			9		7	6				2	1	9-1438082-7	2LIT-14A464-SD-051	
		42																	20	18			15	14		11	10		8	7			4	3	2	1	9-1438082-6	2LIT-14A464-SD-050		
		42																	20	18						11	10									1	9-1438082-5	2LIT-14A464-SD-049		
		42																	20	18						11	10									2	1	9-1438082-4	2LIT-14A464-SD-048	
							35							27																								9-1438082-3	2LIT-14A464-SD-047	
	45	43				36	35			32	31				24		21		19	18	17	16		14	12						7	6				1	9-1438082-1	2LIT-14A464-SD-046		
46										31																												9-1438082-0	2LIT-14A464-SD-045	
										31					24							16								8					3	2		8-1438082-9	2LIT-14A464-SD-044	
													27																									8-1438082-8	2LIT-14A464-SD-043	
	45	44	43	42		40		38	37	36		33	31	29		24	22	20		18	17	16	15						9	8				3			8-1438082-7	2LIT-14A464-SD-042		
	45	44	43	42		40		38	37	36		33	31	29		24	22	21	20	19	18	17	16	15					9	8		6			2		8-1438082-6	2LIT-14A464-SD-041		
46											31																			9			6			3		8-1438082-5	2LIT-14A464-SD-040	
		43	42			39		37										20	19	18						11	10	9							2	1	8-1438082-4	2LIT-14A464-SD-039		
		43								31		29								18																	8-1438082-3	2LIT-14A464-SD-038		
	45	44	43	42		40		38	37	36		33	31	29		24	22	21	20		18	17	16	15					9	8				2			8-1438082-0	2LIT-14A464-SD-037		
	45		43					36	35			31				24						16		14	12						7	6			2	1		7-1438082-9	2LIT-14A464-SD-036	
	45		43					36	35			31				24		21		19		16		14	12						7	6			2	1		7-1438082-8	2LIT-14A464-SD-035	
		43	42			39	38	37			32			28						19	18	17	16					10	9									7-1438082-5	2LIT-14A464-SD-034	
	45	44	43	42		40		38	37	36		33	31	29		24	22	21	20		18	17	16	15					9	8		6			2		7-1438082-4	2LIT-14A464-SD-033		
	45	44	43	42		40		38	37	36		33	31			24	22	21	20		18	17	16	15					9	8		6			2		7-1438082-3	2LIT-14A464-SD-032		
					40								29																	9								6-1438082-6	2LIT-14A464-SD-031	
														27													12											6-1438082-3	2LIT-14A464-SD-030	
														27																		6		4				6-1438082-2	2LIT-14A464-SD-029	
														27																			6						6-1438082-1	2LIT-14A464-SD-028
												29	28		25			21			18	16										6	5					5-1438082-6	2LIT-14A464-SD-027	
												29	28		25			21				16										6	5					5-1438082-5	2LIT-14A464-SD-026	
											30	29						21			18	16											5					5-1438082-2	2LIT-14A464-SD-025	
		43	42			39		37										20	19	18	17		15	14			11	10	9	8	7			4	3	2	1	5-1438082-0	2LIT-14A464-SD-024	
		42																					15	14			11	10	9	8	7			4	3			4-1438082-9	2LIT-14A464-SD-023	
		43	42			39		37										20	19	18	17						11	10	9						2	1		4-1438082-8	2LIT-14A464-SD-022	
		42																									11	10	9								1		4-1438082-7	2LIT-14A464-SD-021
		43	42			39		37								23		20	19	18	17						11	10	9						2			4-1438082-2	2LIT-14A464-SD-020	
45	43					36	35			31					24						18	17	16		14	12						7	6			2	1		4-1438082-0	2LIT-14A464-SD-019
		43	42			39		37								23		20	19	18	17		15	14			11	10	9	8	7			4	3	2		3-1438082-8	2LIT-14A464-SD-018	
		42														23							15	14			11	10	9	8	7			4	3			3-1438082-7	2LIT-14A464-SD-017	
		43	42			39		37								23		20	19	18	17	16					11	10	9						2			3-1438082-6	2LIT-14A464-SD-016	
		42														23											11	10	9									3-1438082-5	2LIT-14A464-SD-015	
45	43			39	37	36	35			31					24		21		19	18	17	16		14	13	12				9	7	6			2	1		3-1438082-4	2LIT-14A464-SD-014	
45	43			39	37	36	35		33	31					25	24		21		19	18	17	16		14	13	12				9	7	6			2	1		3-1438082-3	2LIT-14A464-SD-013
45	43					36	35			31					24		21		19	18	17	16		14	12							7	6			2	1		3-1438082-2	2LIT-14A464-SD-012
		42																					15	14	13			10	9	8	7			4	3			3-1438082-1	2LIT-14A464-SD-011	
		43	42			39		37										20	19	18	17			13			10	9								2		3-1438082-0	2LIT-14A464-SD-010	
		42																						13			10	9										2-1438082-9	2LIT-14A464-SD-009	
		43	42			39		37										20	19	18	17		15	14	13			10	9	8	7			4	3	2		2-1438082-5	2LIT-14A464-SD-008	
45				39	37	36	35		33						25	24		21		19	18	17	16		14	13	12													

LOC	DIST	REVISIONS					
FX	00	P	LTR	DESCRIPTION	DATE	DWN	APVD
		-		SEE SHEET 1	-	-	-

		44							35		32							22								12		9	7	6				1	6-1438735-7	2LIT-14A464-SD-086																
		44							35		32															12		9	7	6				1	6-1438735-3	2LIT-14A464-SD-085																
									35																											6-1438735-2	2LIT-14A464-SD-084															
			43	42		40	39		37					29					20		18				15	14		11	10	9	8	7			4	3	1	6-1438735-1	2LIT-14A464-SD-083													
45		43							38		36				31				25	24						18	17	16		14	12					7	6		2	1	5-1438735-0	2LIT-14A464-SD-082										
45		43							38		36				31				25	24								16	14	12						7	6		2	1	4-1438735-9	2LIT-14A464-SD-081										
45		43							38		36			32	31				25	24		21		19	18	17	16		14	12						7	6		1	4-1438735-8	2LIT-14A464-SD-080											
45		43							39	38	37	36			31				25	24						18	17	16		14	13	12			9	7	6		2	1	4-1438735-7	2LIT-14A464-SD-079										
				42																					20	18				13	11	10							2	1	3-1438735-8	2LIT-14A464-SD-078										
				42																					20	18				13	11	10								1	3-1438735-7	2LIT-14A464-SD-077										
45		43							39	38	37	36			31				25	24		21	20	19	18	17			14	13	12			9					2	1	3-1438735-6	2LIT-14A464-SD-076										
45		43												31					25	24		21	20	19	18	17			14	12									2	1	3-1438735-5	2LIT-14A464-SD-075										
			43	42			40	39		37					29										20	18			15	14		11	10	9	8	7			4	3	2	1	3-1438735-3	2LIT-14A464-SD-074								
45		43							39	38	37	36			31				25	24				20	19	18	17			14	13	12			9					2	1	3-1438735-2	2LIT-14A464-SD-073									
45		43												31					25	24		21	20	19	18	17	16		14	12						7			2	1	3-1438735-1	2LIT-14A464-SD-072										
45		43							39	38	37	36			31				25	24		21	20	19	18	17	16		14	13	12			9	7				2	1	3-1438735-0	2LIT-14A464-SD-071										
45		43												31					25	24		21	20	19			16		14	12					7				2	1	2-1438735-9	2LIT-14A464-SD-070										
45		43							39	38	37	36			31				25	24		21	20	19			16		14	13	12			9	7				2	1	2-1438735-8	2LIT-14A464-SD-069										
45		43												31					25	24				20	19	18	17			14	12									2	1	2-1438735-6	2LIT-14A464-SD-068									
												33																			13											2-1438735-5	2LIT-14A464-SD-067									
45	44	43	42					40			38	37	36		33	31				24	22	21	20		18	17	16	15						9	8					2	2-1438735-4	2LIT-14A464-SD-066										
			43												31		29								18										8						2	2-1438735-1	2LIT-14A464-SD-065									
45		43									38		36	35		31				25	24		21				16		14	12							7	6			2	1	2-1438735-0	2LIT-14A464-SD-064								
45		43							39	38	37	36	35			31				25	24					18	17	16		14	13	12			9	7	6				2	1	1-1438735-9	2LIT-14A464-SD-063								
45		43									38		36	35		32	31				25	24		21		19	18	17	16		14	12						7	6			1	1-1438735-8	2LIT-14A464-SD-062								
45		43									38		36	35		31				25	24							16		14	12						7	6			2	1	1-1438735-7	2LIT-14A464-SD-061								
45		43									38		36	35		31				25	24		21		19			16		14	12						7	6			2	1	1-1438735-6	2LIT-14A464-SD-060								
45		43									38		36	35		31				25	24					18	17	16		14	12						7	6			2	1	1-1438735-5	2LIT-14A464-SD-059								
45		43							39	38	37	36	35		31					25	24		21		19	18	17	16		14	13	12			9	7	6			2	1	1-1438735-4	2LIT-14A464-SD-058									
45		43									38		36	35		31				25	24		21		19	18	17	16		14	12						7	6			2	1	1-1438735-3	2LIT-14A464-SD-057								
				42							37													20		18			15	14		11	10	9	8	7			4	3	2	1	1-1438735-2	2LIT-14A464-SD-056								
45		43										36	35			31				24		21		19			16		14	12								7	6			1	1-1438735-1	2LIT-14A464-SD-055								
											35								27																							3		1-1438735-0	2LIT-14A464-SD-054							
			43												31		29									18									9	8						2		1438735-9	2LIT-14A464-SD-053							
											35								27																								1438735-8	2LIT-14A464-SD-052								
46	45	44	43	42	41	40	39	38	37	36	35	34	33	32	31	30	29	28	27	26	25	24	23	22	21	20	19	18	17	16	15	14	13	12	11	10	9	8	7	6	5	4	3	2	1		PART NUMBER	FORD PART NUMBER				
TERMINAL HOLE POSITION																																																				
PIN-OUT CHART KEYING OPTION "A" 																																																				

THIS DRAWING IS UNPUBLISHED. RELEASED FOR PUBLICATION 20		DWN R. VESTAL 01AUG2003		Tyco Electronics Tyco Electronics Harrisburg, PA 17105-3608	
CHK D. STRAUSSER 01AUG2003		NAME		46 WAY PCM CONNECTOR HARNESS ASSEMBLY	
APVD D. STRAUSSER 01AUG2003		PRODUCT SPEC		SIZE CAGE CODE DRAWING NO RESTRICTED TO	
APPLICATION SPEC		WEIGHT		A 00779 C=1438082	
CUSTOMER DRAWING		SCALE 4:1		SHEET 3 OF 5 REV 1	

DIMENSIONS:

mm

TOLERANCES UNLESS OTHERWISE SPECIFIED:

9 PLC ±.3

1 PLC ±0.10

5 PLC ±

4 PLC ±

ANGLES ±°

FINISH

MATERIAL

-





# Mouser Electronics

Authorized Distributor

Click to View Pricing, Inventory, Delivery & Lifecycle Information:

[TE Connectivity:](#)

[7-1438082-1](#)