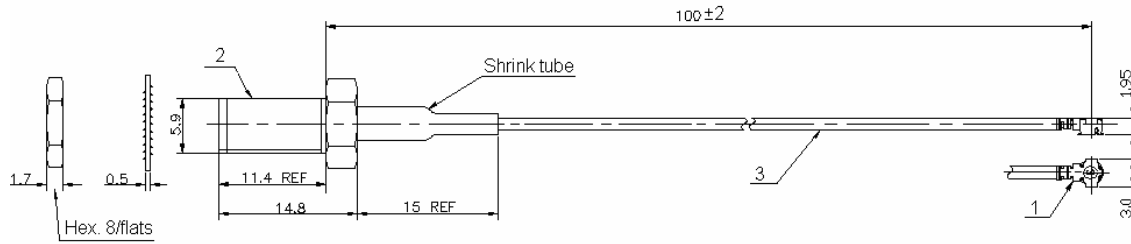


PLUG MML H2.5-JACK SMA BULKHEAD

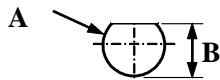
R302.255.000

CABLE 1.33/50S-BR,LENGTH 10CM

Series : MML

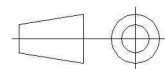


PANEL CUT OUT



| | mm | |
|----------|------------|------------|
| | Maxi | mini |
| A | 6.6 | 6.5 |
| B | 6.1 | 6.0 |

All dimensions are in mm.



- * 1 * Connector A : **MML H2.5 PLUG (gold plated)**
- * 2 * Connector B : **SMA JACK BULKHEAD(gold plated)**
- * 3 * Cable : **1.33/50S BLACK**

ELECTRICAL CHARACTERISTICS

| | |
|-------------------------|----------------------------------|
| Impedance | 50 Ω |
| Frequency | 0-3 GHz |
| Operating temperature | -40/+90 ° C |
| VSWR | 1.5 + 0.000 x F(GHz) Maxi |
| Insertion loss | 0.3 √F(GHz) dB Maxi |
| Voltage rating | 250 Veff Maxi |
| Dielectric withstanding | 300 Veff mini |
| Insulation resistance | 500 MΩ mini |

SPECIFICATION

| | |
|-----------------|--------------------|
| Weight | 4.8000 g |
| Cable retention | 19.6 N mini |
| Mating life | 30 cycles |
| Others : | |



Edition : 1020 A

Design changes may be in order to improve the product.

Mouser Electronics

Authorized Distributor

Click to View Pricing, Inventory, Delivery & Lifecycle Information:

Radial:

[R302255000 100](#) [R302255000 200](#) [R302255000 150](#) [R302255000 250](#) [R302255000 300](#)