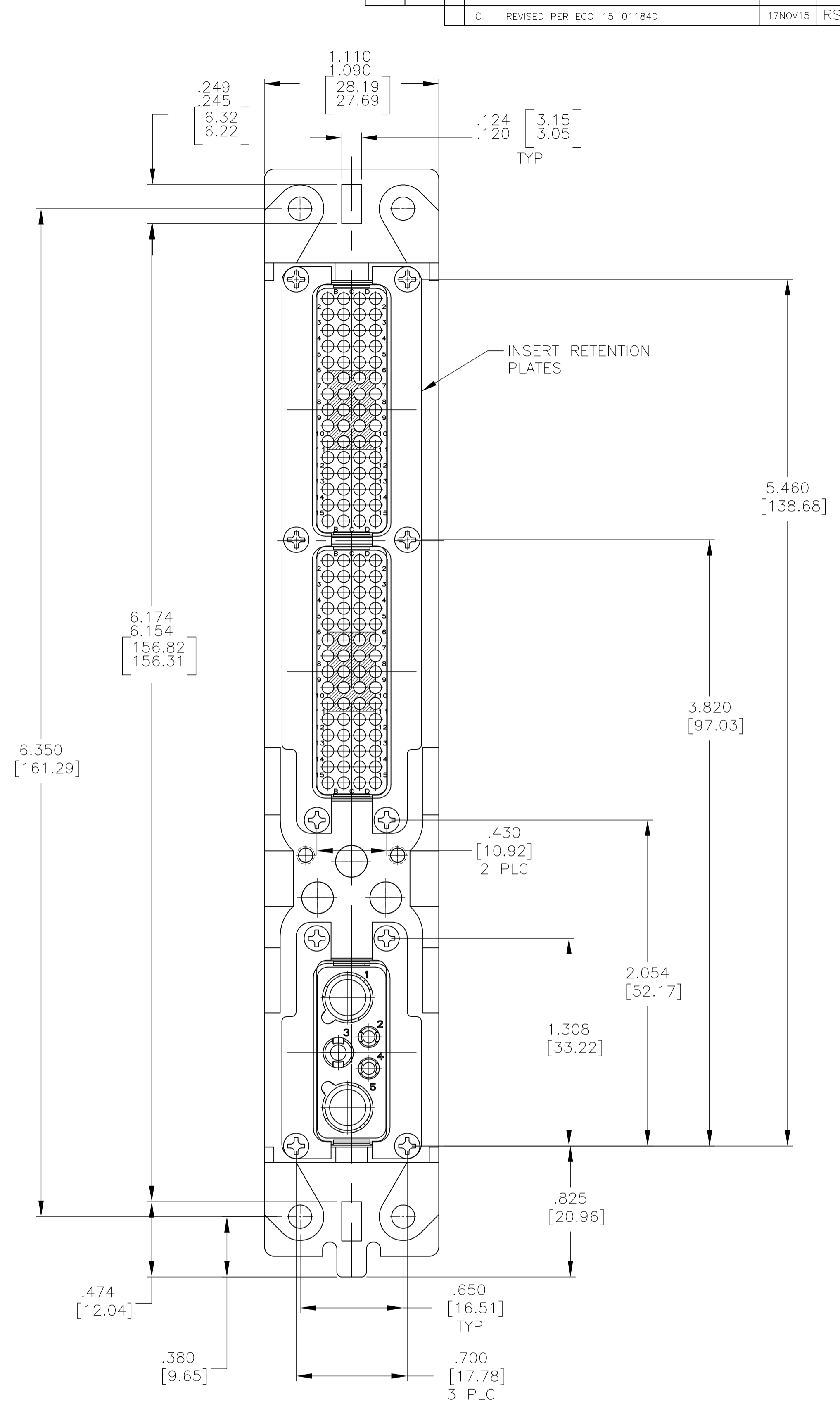
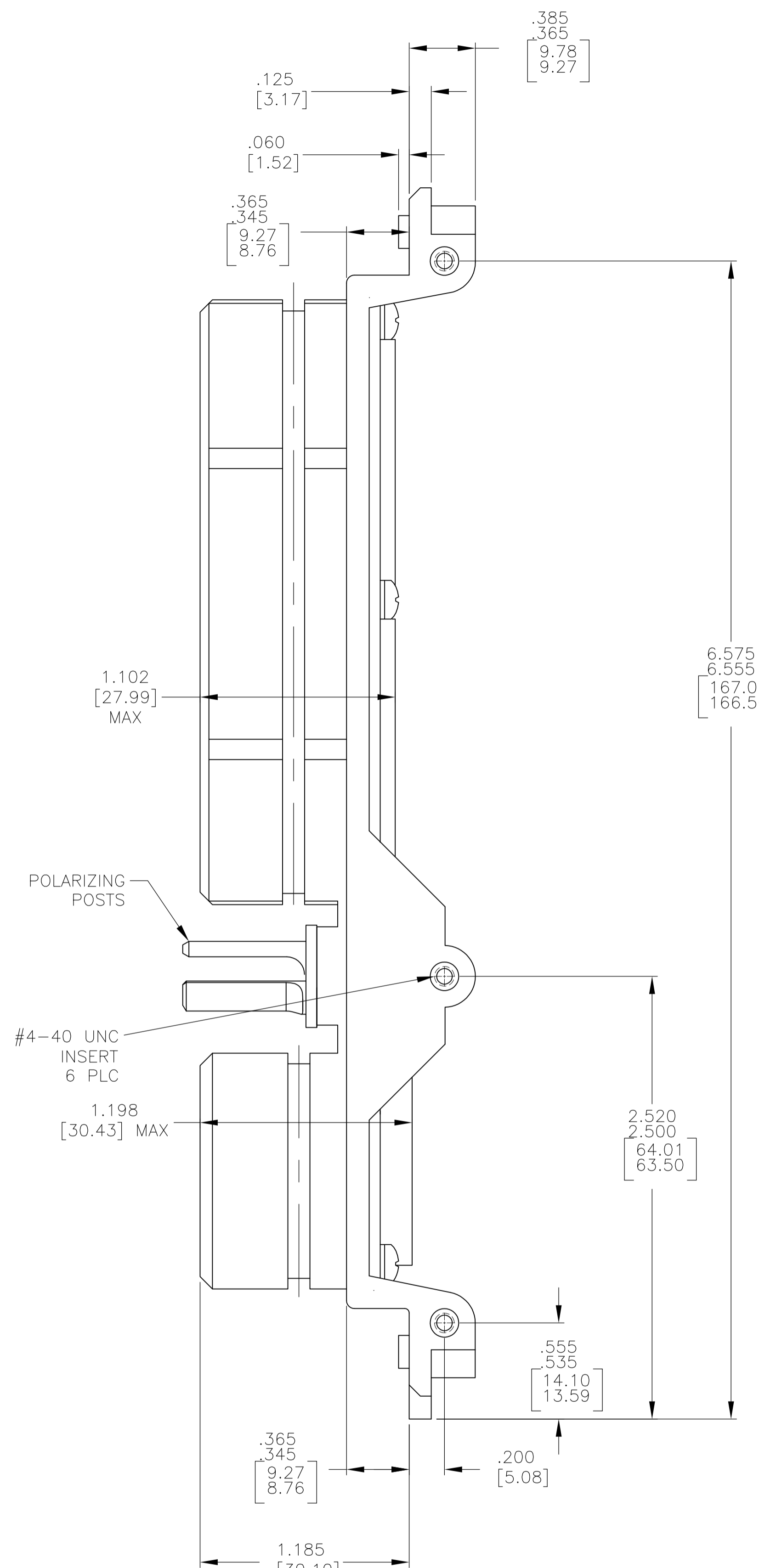
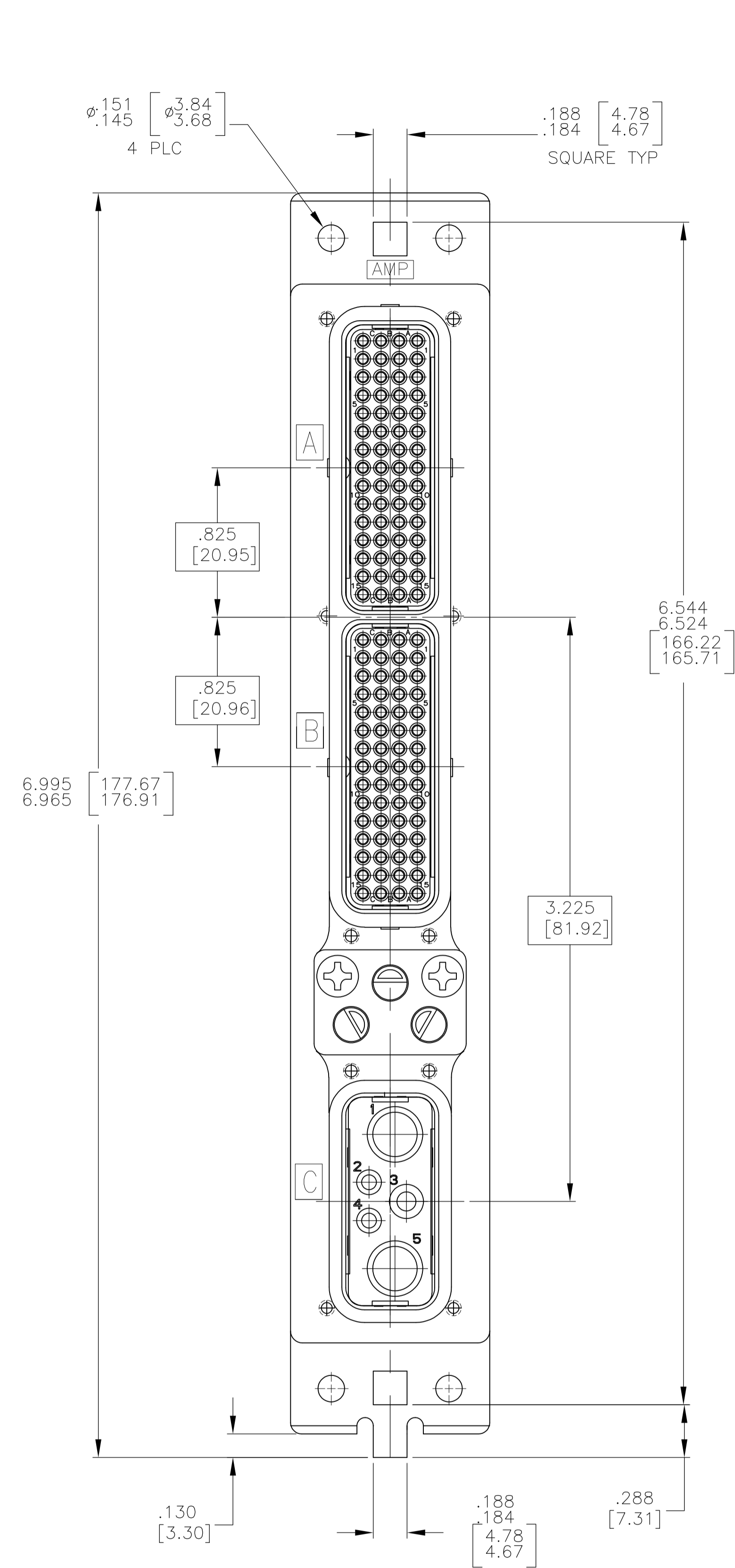


REVISONS		DATE	DN	APVD
LOC	DIST			
C	REVISED PER ECO-15-011840	17NOV15	RS	CT



POLARIZING POSTS
#4-40 UNC INSERT 6 PLC
1.198 [30.43] MAX

INSERT RETENTION PLATES

- CONNECTOR DIMENSIONS ARE PER ARINC 600 SPECIFICATION
- FOLLOWING CONTACTS ARE INCLUDED AND NOT LOADED:
 SIZE 22 CRIMP PIN CONTACT: TE P/N 208262-3; QTY: 120
 SIZE 16 CRIMP SOCKET CONTACT: TE P/N 208270-2; QTY: 2
 SIZE 12 CRIMP SOCKET CONTACT: TE P/N 208273-2; QTY: 1
 SIZE 8 QUADRAX CONTACT: TE P/N 1445693-1; QTY: 2
- KEYING SHOWN IN POSITION "01" FOR REFERENCE ONLY. SEE TABLE FOR KEYING POSITION. FOR POSITION "00" KEYING SHIPPED UNASSEMBLED.

COMPONENT	MATERIAL	FINISH
SHELL	DIE CAST ALUMINUM PER ASTM-B-85	CHEMICAL CONVERSION COATING PER MIL-C-5541, CLASS 1A
RETENTION PLATES	ALUMINUM ALLOY PER ASTM-B-209	CHEMICAL CONVERSION COATING PER MIL-C-5541, CLASS 1A
SCREWS AND LOCKWASHERS	STEEL OR STAINLESS STEEL	CHROMATE OVER ZINC OR PASSIVATED
POLARIZING POSTS	ZINC ALLOY PER ASTM-B-86	ELECTROLESS NICKEL PER MIL-C-26074, CLASS 4, GRADE B
POLARIZING POST RETAINING PLATE	ALUMINUM ALLOY PER ASTM-B-209	BLUE ANODIZED PER MIL-A-8625
INSERTS	THERMOSET	-

THIS DRAWING IS A CONTROLLED DOCUMENT.

DIMENSIONS: INCHES/mm	TOLERANCES UNLESS OTHERWISE SPECIFIED:
0 PLC	± .005 [0.13]
1 PLC	± .005 [0.13]
2 PLC	± .005 [0.13]
3 PLC	± .005 [0.13]
4 PLC	± .005 [0.13]
ANGLES	± .005 [0.13]

MATERIAL SEE TABLE FINISH SEE TABLE

OBSELETE	"08"	2157123-1
KEYING POSITION	PART NUMBER	
TE Connectivity		
NAME: PLUG ASSY, SIZE 1, ARINC 600 (60/60/502)		
SIZE	CAGE CODE	DRAWING NO
A1	00779	2157123
CUSTOMER DRAWING	SCALE 2:1	SHEET 1 OF 1 REV C

Mouser Electronics

Authorized Distributor

Click to View Pricing, Inventory, Delivery & Lifecycle Information:

[TE Connectivity:](#)

[2157123-1](#)