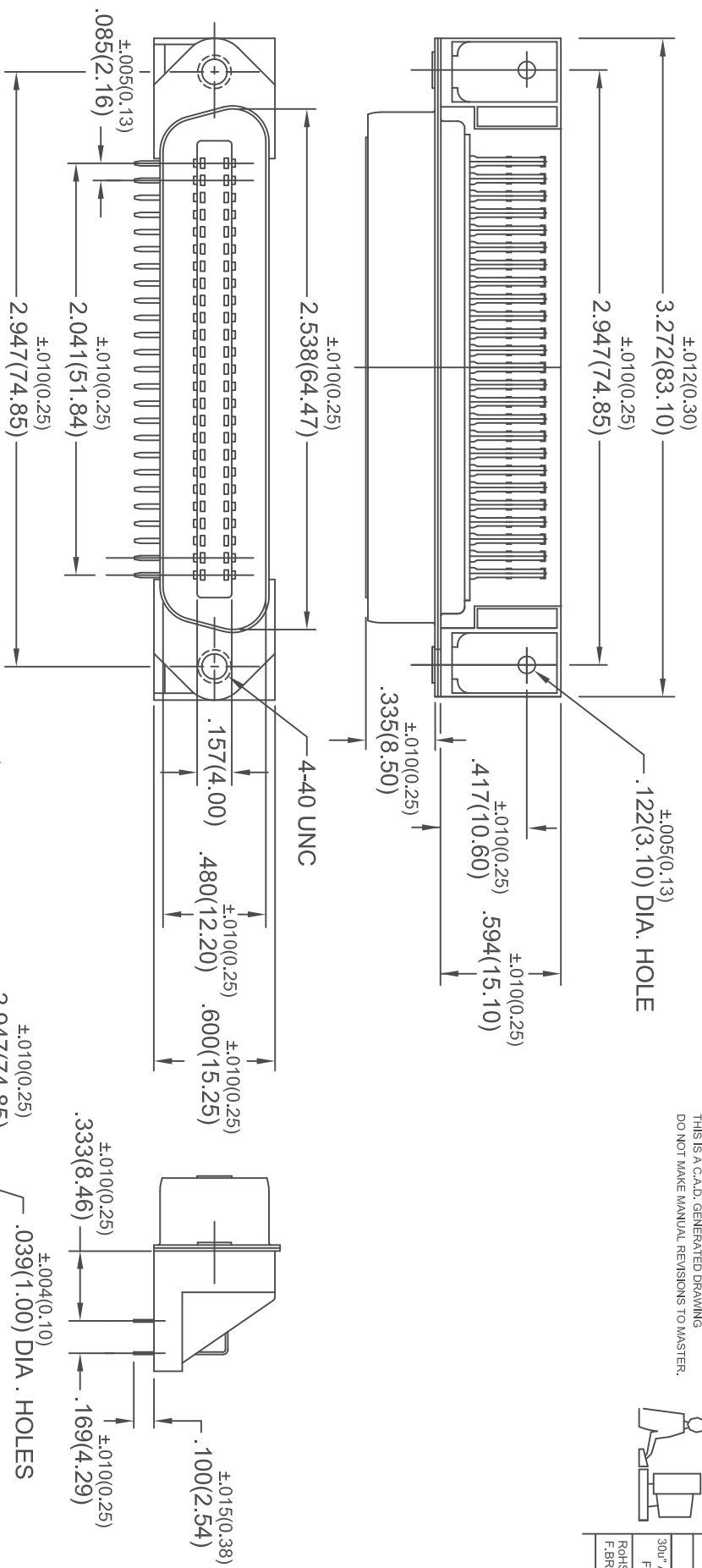


THIS IS A C.A.D. GENERATED DRAWING  
DO NOT MAKE MANUAL REVISIONS TO MASTER.



ISSUE NUMBER	ORIGINAL
①	ORIGINAL
②	30" ADDED TO GOLD PLATING F. JAWDI OCT. 23 2002
③	ROHS AND TOL. ADDED F. BRONNES JUN. 04/09



THIS SERIES FULLY CONFORMS TO THE  
EUROPEAN UNION DIRECTIVES 2002/95/EC  
AND 2002/96/EC FOR ROHS COMPLIANCY.



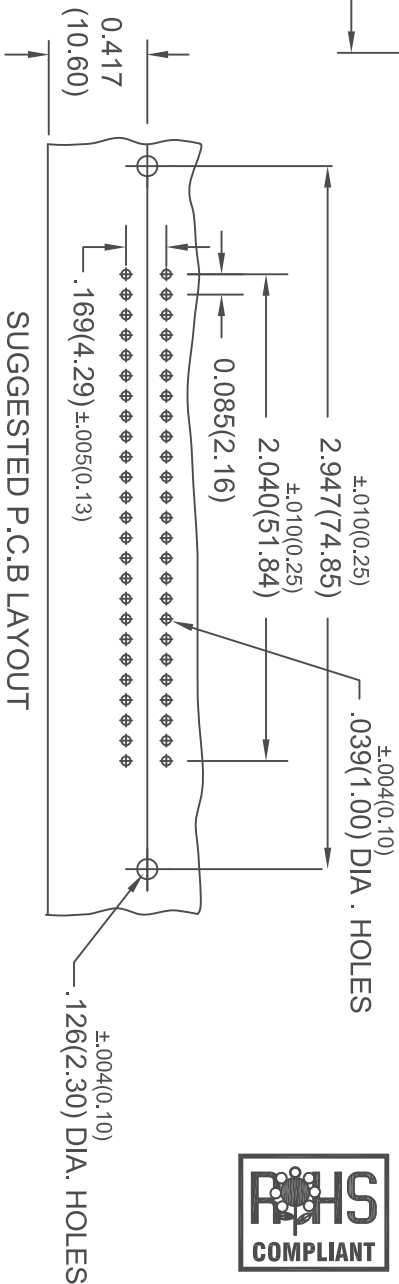
**MATERIALS:**

INSULATOR : PBT COLOR BLACK; UL 94V-0 RATING  
CONTACTS: PHOSPHOR BRONZE, 30" OF GOLD PLATED  
ON CONTACT AREA, TIN/LEAD ON TAILS OVER NICKEL  
SHELL: STEEL, NICKEL PLATED

**ELECTRICAL SPECIFICATIONS**

CONTACT CURRENT RATING: 1 AMPERE  
DIELECTRIC WITHSTANDING VOLTAGE: 1000 VAC rms  
INSULATION RESISTANCE:  
1000 MEGOHMS MIN. AT 500 VDC  
CONTACT RESISTANCE: 30 MILLIOHMS MAX.  
OPERATING TEMPERATURE: -55°C TO +105°C

CONNECTOR PART NO. B57-150-261-201



**50 POSITION MINIATURE RIBBON PLUG  
RIGHT ANGLE P.C.B.**



EDAC INC  
TORONTO, ONTARIO  
CANADA

THESE DRAWINGS AND SPECIFICATIONS  
ARE THE PROPERTY OF EDAC INC. AND  
SHALL NOT BE REPRODUCED OR COPIED  
OR USED AS THE BASIS FOR THE  
MANUFACTURE OR SALE OF APPARATUS  
WITHOUT WRITTEN PERMISSION.

ACAD REFERENCE NO.	B57-150-261-201
DRAWN: F. JAWDI	DATE: OCT. 22/02
CHECKED:	DATE:
SCALE: IN C.A.D. 1:1	SHEET 1 OF 1
DRAWING NUMBER	B57-150-261-201
	ISSUE 3

# Mouser Electronics

Authorized Distributor

Click to View Pricing, Inventory, Delivery & Lifecycle Information:

[EDAC:](#)

[B57-150-261-201](#)